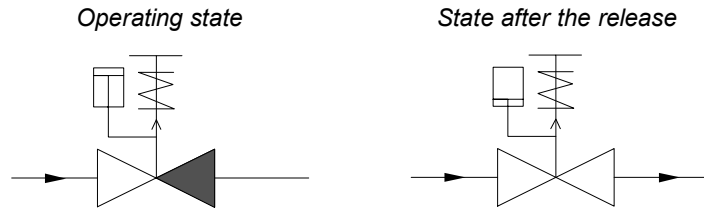


**Body:** EN-GJS-400-18-LT (GGG-40.3), two way form for heat transfer oil  
 Pressure range: PN 16, PN 25  
 Immersion length acc. to DIN EN 558, basic series 1  
 Flanges acc. to DIN EN 1092-2 type 21  
 Spindle sealing: double wall bellow and safety stuffing box  
 Internal parts: stainless steel, replaceable seat rings  
 Leakage: < 0,01% Kvs

**Function:**



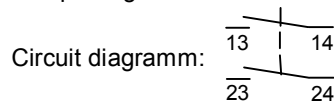
The quick opening valve is a two way valve complete with mechanical actuator. In operation, the valve cone is in the lower end position (see diagram above), the straightway is closed (leakage < 0.01% kvs). This is achieved manually. The clamp lever included in the supply is used to move the toggle clamp downwards until it clicks into place (via the knee point). In so doing, the restoring spring is pre-tensioned. The switch signals that the valve has reached its end position (see below for switch data, other types of switches on request). The opening trip is undertaken by connecting a pneumatic or hydraulic pulse (3 bar) to the cylinder. The cylinder piston forces the toggle clamp lever out of the clicked-in position; the restoring spring moves the valve cone into the upper end position. The straightway is opened (see diagram above).

*Under tension, the tripping zone of the toggle clamp is to be kept clear of access by using suitable protection devices or barriers (risk of injury from the lever kicking back)*

**Accessories, special types:**  
 Add. limit switches (on request)  
 Manual release (on request)  
 Other Kvs- values (on request)  
 Weld-on ends (on request)  
 Flange drillings acc. to ANSI / JIS (on request)

**Order text:**  
 Quick opening valve in two way form  
 EN-GJS-400-18-LT (GGG-40.3), PN . . . , DN . . . , Kvs . . .  
 Spindle sealing with bellow  
 List-No. 6051 . . . , accessories: . . .

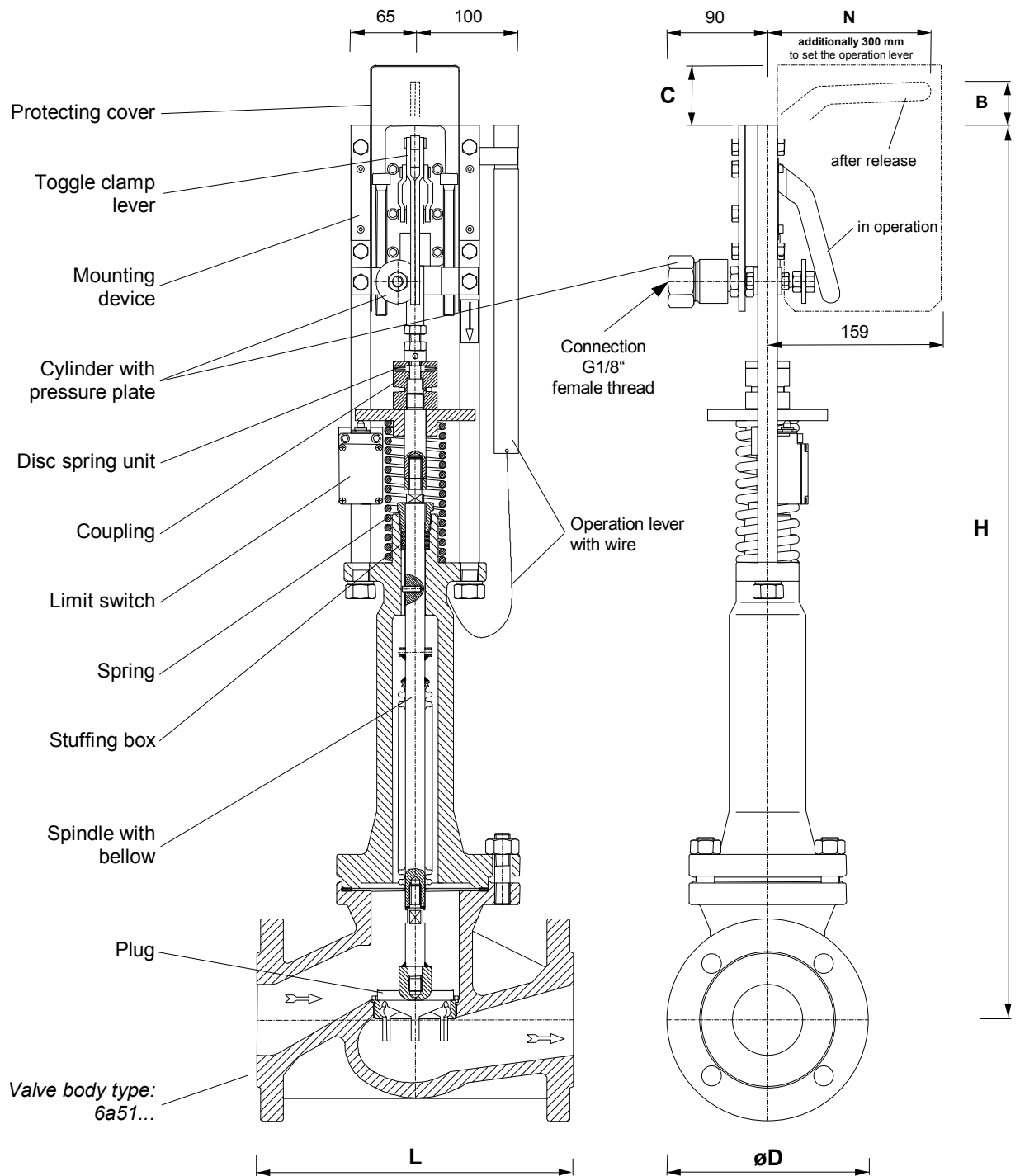
**Switch data:**  
 Switching element: 2 normally open contacts  
 Switching system: slow action  
 Electrical loading: 400 VAC, 6 A, (AC15)  
 250 VDC, 0,27 A, (DC-13)  
 Minimum loading: 24 V, 10 mA  
 Protection class: IP 67 acc. to EN 60529  
 Temp. range: -20 °C to 80 °C



**Pressure-temperature ratings acc. to DIN EN 1092-2:**

by:	-10...120	150	200	250	300	350	°C
PN 16	16	15,5	14,7	13,9	12,8	11,2	bar
PN 25	25	24,3	23	21,8	20	17,5	bar

DN	List-No.		Kvs m³/h	Stroke mm	Max. pressures	
	PN 16	PN 25			differential bar	working bar (g)
15	6051 400	6051 500	4,0	20	25,0	25,0
20	6051 401	6051 501	6,3	20	25,0	25,0
25	6051 402	6051 502	10	20	25,0	25,0
32	6051 403	6051 503	16	20	16,0	25,0
40	6051 404	6051 504	25	20	11,0	17,0
50	6051 405	6051 505	40	20	7,0	8,0
65	6051 406	6051 506	63	30	5,0	6,0
80	6051 408	6051 508	100	30	3,0	4,0
100	6051 410	6051 510	160	30	2,0	3,0
125	6051 412	6051 512	230	40	1,0	2,0
150	6051 415		330	40	0,7	1,7



DN	15	20	25	32	40	50	65	80	100	125	150
Height H	666	680	674	681	686	689	819	819	827	929	944
Length L	130	150	160	180	200	230	290	310	350	400	480
Flange øD	95	105	115	140	150	165	185	200	235	270	300
B	25	25	25	25	25	25	55	55	55	110	110
C	55	55	55	55	55	55	96	96	96	96	96
N	155	155	155	155	155	155	150	150	150	135	135
Weight kg	16	17	18	19	21	23	40	43	53	105	115