



## DRL Constant Pressure Frequency Conversion Water Supply Equipment

[www.cnppump.com](http://www.cnppump.com)

Nanfang Pump Industry Co.,Ltd.



**Nanfang Pump Industry Co.,Ltd.**  
CNP Headquater  
**Address:** Renhe Town, Hangzhou, China  
**Tel:** +86 571 86397876  
**Fax:** +86 571 86397809  
**Email:** [info@nanfang-pump.com](mailto:info@nanfang-pump.com)  
[www.cnppump.com](http://www.cnppump.com)

E190924  
Subject to amendments



**NANFANG PUMP INDUSTRY CO.,LTD.**

» A GREEN WATER POWER EXPERT  
BESIDE YOU.

## Contents

01 **Company Profile**

02 **Corporate Culture**

03 **Product description**

04 **Product range**

05 **Product features**

06 **Technical features**

11 **Model description**

12 **Model selection**

35 **Enterprise Honor**

37 **Global Sales And Service Network**

39 **Sponge City**



Nanfang Pump Industry Co.,Ltd (CNP),as a subsidiary of Nanfang Zhongjin Environment Co., Ltd, was founded in 1991,and listed on Shenzhen Stock Exchange on December 9,2010 with stock code 300145.

In 2018, CNP' s annual output exceeded 800,000 units/set with nearly 3 billion sales revenue, growing at a double-digit rate every year .

As a national enterprise technology center,CNP launched ultra-high efficient,new generation CDM (F) light vertical multistage centrifugal pump in 2017,  $MEI \geq 0.7$ .All light stainless steel pump product series grow stably. Intelligent water supply and drainage equipment technology take lead in industry.Fire pump and diesel engine have obtained UL certification.TD series in-line pump, NIS series end suction pump, NSC split casing pump, WQ sewage pump, metering pump, oil pump and other pump products, can meet various application needs of different fields.

CNP has a complete sales network both in domestic and overseas market ,exporting to over 60 countries and regions,maintaining long-term and strong relationship with our clients.CNP pumps have been widely applied in various fields like water treatment、 water supply and drainage、 HVAC、 industrial application、 seawater desalination、 energy and power etc.

- I Core value: **Integrity , win-win pursue, self-transcendence**
- II Mission: **Pumping water ,Pumping honor**
- III Vision: **A green water expert**
- IV Operation tenet : **Quality first, Credibility supremacy**
- V Enterprise principle: **Solidarity, deploitation, innovation, effort advance**
- VI Social responsibility: **Dedicated members of public welfare**
- VII Management policy: **Customer first, High quality and efficient, environment friendly**
- VIII Quality promise: **Swift delivery ,good service**
- IX Cooperation value: **Work together with peers ,superior and subordinate**
- X Talent value: **Contribution matters**

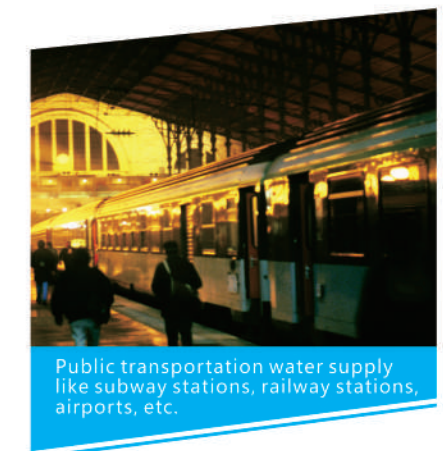


## » PRODUCT DESCRIPTION



With development of the times and social progress, more and more high and even super-high buildings have risen. In order to better meet the needs of different users, CNP launches Constant Pressure Frequency Conversion water supply equipment, which uses advanced NFC-specific intelligence control technology with variable frequency operation, precise control and pump speed adjustment to keep constant pressure in pipeline, so that the entire water supply system is always in an optimal state of high efficiency and energy saving. Intelligent and fully automatic operation, no need for personnel to be on duty, is an advanced energy-saving equipment in the water supply field.

## APPLICATION RANGE «





**Fully automatic unattended operation**

The system uses the latest performance control technology to achieve fully automatic control.



**Adjust constant water pressure**

The intelligent frequency conversion technology automatically adjusts the running speed and numbers of pump, keeps constant pressure of pipe network, and keeps the entire water supply system in an optimal state of high efficiency and energy saving.



**Energy efficient operation**

The intelligent control system adopts various frequency conversion control methods, combined with characteristics of the performance curve of pump, automatically optimizes the analysis and adjustment, so that each pump always runs at a high efficiency point, saving energy effectively.



**Health and safety**

All flow passage components of the equipment are processed in food grade Stainless Steel and are fully compliant with related water health regulations.



**Longer service life**

The equipment pipeline processed by Cold Water Cutting Anti-oxidation Procedure, hardware produced with automatic welding technology, and low-voltage components of international famous brands, are combined together to ensure longer service life of the equipment.

1. **Intelligent three-core extreme speed inverter controller**

**Extreme speed**

Independent developed, operating speed can reach microseconds.

**High efficient**

Deep analysis of each pump, to ensure always operating at a high efficiency point.

**Intelligent**

Powerful data analysis function, real-time analysis, automatic adjustment to the best operating state, to achieve remote monitoring of PC, mobile phone, IPAD and other terminal devices.

**Energy saving**

Adopt the three-core extreme speed constant pressure no-negative pressure PID patent control technology, making the energy saving effect is more obvious.

**Beautiful appearance**

Equipped with an industrial-grade high-resolution color touch screen, the interface is beautiful and easy to operate.



2. **Imported Siemens SMART PLC control system**

**Flexible**

Modify program according to special needs at any time, greatly improving the flexibility of the equipment.

**Extensible**

Expand functions without building peripheral modules, making for lower conversion costs and better compatibility.

**Adaptable**

Strong non-standard adaptability, customized design for different customer requirements.



3. Remote monitor

**Standard configuration: RS485 remote monitoring interface**

Each set of equipment is equipped with reserved RS485 interface, standard MODBUS communication protocol, easy monitoring, providing data support for the coming big data era.

**Remote monitor cloud platform**

Via comprehensive collection and analysis of various equipment data, and business synergistic processing, the secondary water supply equipment dispatching cloud platform finally achieve unified 24-hour uninterrupted monitoring, configuration, operation management, emergency command, etc.

**Multi-platform access**

Internet browser (IE kernel, Web Kit kernel, blink kernel), Android phone or tablet, IOS phone or tablet all can run.

**Permanent data storage**

Data cloud storage can save queries lifetime.

**Big data intelligence analysis**

Cloud data analysis optimizes equipment operating curves and improves operational efficiency.

**Centralized management of smart city**

The location of the equipment is precisely positioned, all units are managed together. Equipment running state prediction

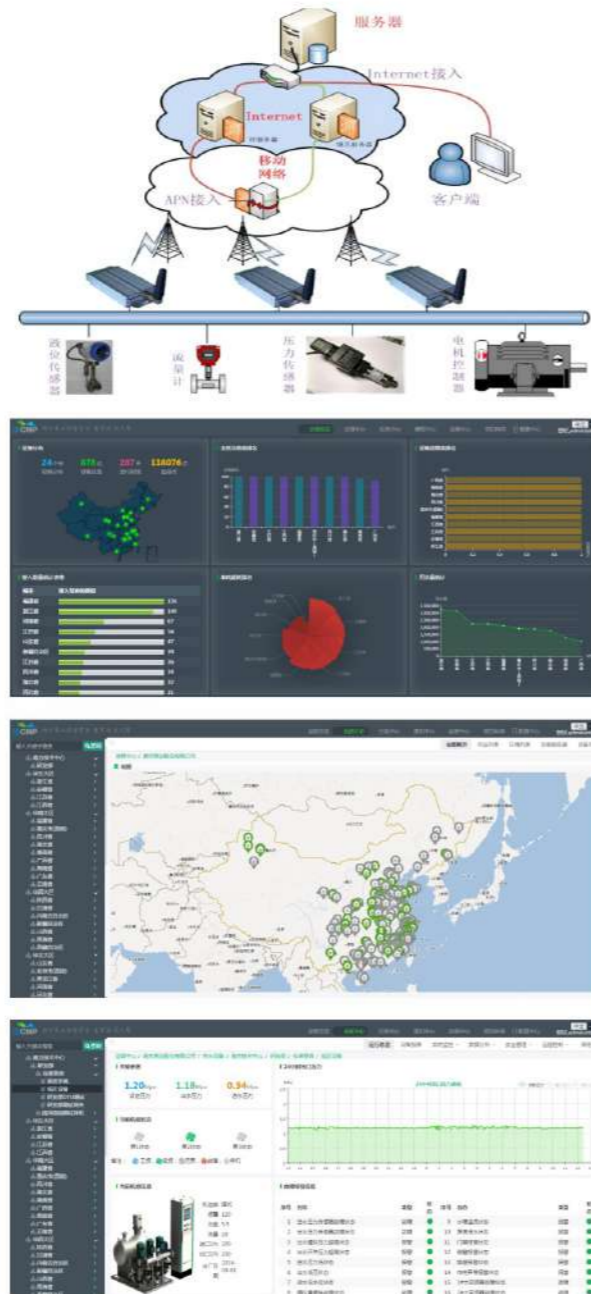
Integrate smart interconnect technology to send maintenance information at regular intervals.

**Strong compatibility**

Support access to water quality testing equipment from third-party manufacturers.

**Safety**

Multi-level authority account, partition management, more convenient for the builds and daily management of water company and property company.



4. High precision meters



» The pressure sensor is one of the core components of the equipment. CNP adopts Swiss imported brand products which we cooperate for many years and be sure of the quality. The pressure of the waterproof hammer can be up to 10MPa or more. Wide temperature range is applicable, with the highest +125°C and the lowest -40°C, which can operate safely and reliably in various complicated occasions.

» The pressure switch adopts Danish imported brand products as the second guarantee of system pressure. It works together with pressure sensor, when the user pressure is abnormally high pressure, the system operation will cut off in time to ensure user's safety.

» The water inlet end of the equipment is equipped with self-designed and developed low water level sensor system. When the inlet is short of water, the system automatically stops running, and the fault alarm prompts to prevent system from idling and damage the equipment.

5. Control cabinet

Industrial-grade dedicated control cabinet, protection class IP30-IP54 is optional, suitable for various working conditions.



≡ Standard control cabinet

It adopts welding combined structure, phosphating primer coating and electrostatic spraying treatment process on external surface, which has high anti-rust performance. The control cabinet color is international gray (RAL7035), with high-grade threshold, the control cabinet is simple and good-looking. The front end of the control cabinet adopts a multi-folded protective wall, which can effectively prevent the entry of water and dust, and is suitable for most working conditions in the room.

≡ High-grade control cabinet

The door panel of the cabinet adopts a curved design, the curved part is embedded with high permeability tempered glass. Elegant curved is matched with large transparent observation window in unique color, enhancing visualization effect of the whole cabinet, which is very humanized and attractive. The cabinet adopts frame structure and advanced double-layer isolation technology to effectively reduce electromagnetic interference. It can be combined together to form a cabinet according to different site needs, which greatly improves uniformity and integrity of the control cabinet. The door panel seal adopts new glue injection technology, the flexibility of the seal strip is greatly improved, the sealing effect is better, and the protection grade can reach IP54, which is suitable for most harsh environments.

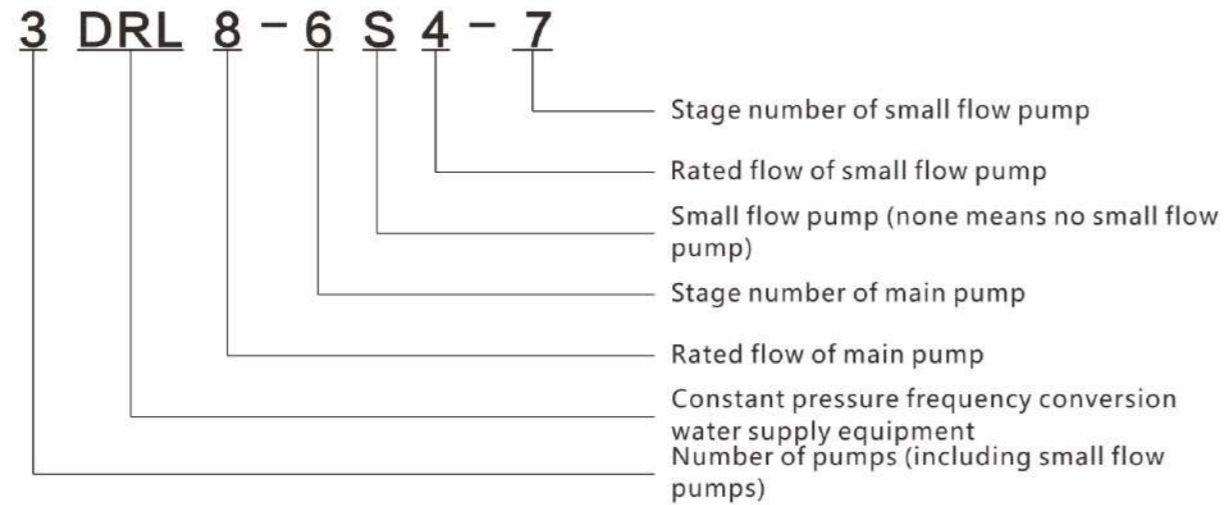
6. Expanded options, precise customization

According to different needs, customers can add accessories such as level gauge, electric energy meter, bypass, flexible joints for inlet and outlet, flow meters, filters, shock absorbers, backflow preventers, sterilizers, water quality testing and purification equipment, etc. Tailored design and development can also be done according to unique needs of our customers.

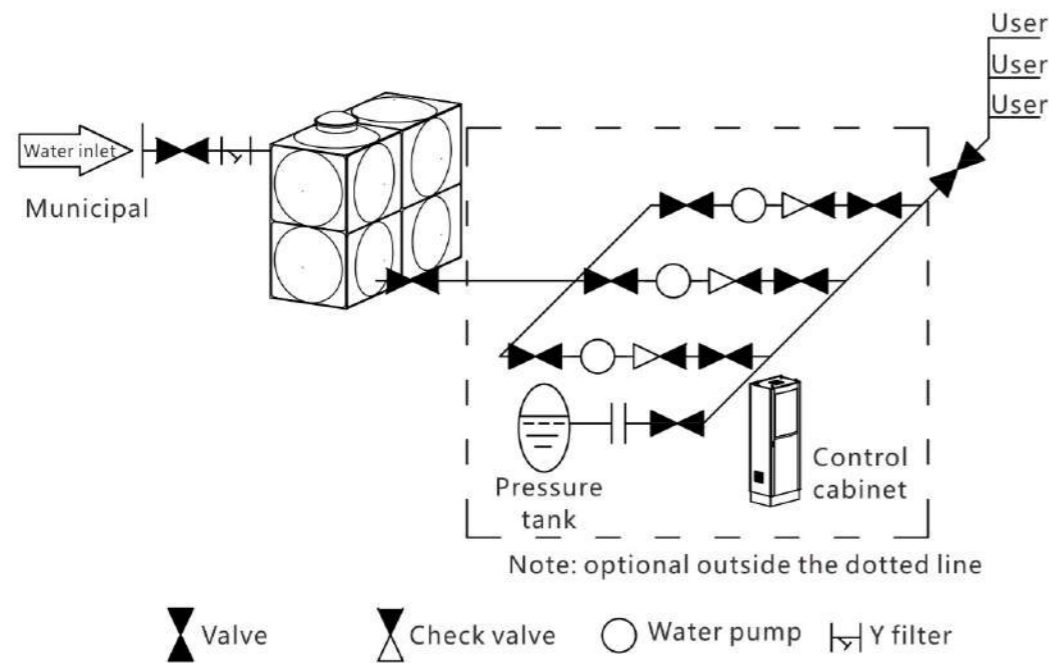


**Device model definition**

**Example: 3 bench pump set with small flow pump**



**Schematic diagram**



• 2DRL Series

Model	Single pump power (kW)	Inlet/outlet pipe DN	Pressure tank (L)	Flow (m³/h)	2.4	3.2	4	4.8	5.6	6	6.4	7.2
2DRL3-3	0.37	50	60/10	Head (m)	21.5	21	20.5	19.5	18	17	16.5	15
2DRL3-4	0.37	50	60/10		29	28.5	27.5	26	24	23	22	20
2DRL3-5	0.55	50	60/10		36	35	33.5	32	30	29	28	25
2DRL3-6	0.55	50	60/10		43.5	42.5	41	39	36.5	35	33.5	30
2DRL3-7	0.75	50	60/10		51	50	49	46	43	41	39.5	35
2DRL3-9	1.1	50	60/10		66	65	63	60	56	53	51	45
2DRL3-11	1.1	50	60/10		80	79	77	73	68	65	62	55
2DRL3-13	1.5	50	60/10		95	93	90	86	80	77	73	64
2DRL3-15	1.5	50	60/10		110	108	105	100	94	90	86	76
2DRL3-18	2.2	50	60/16		133	130	126	120	113	108	102	90
2DRL3-22	2.2	50	60/16		162	158	154	146	137	132	125	110
2DRL3-26	3	50	60/16		192	188	180	172	161	154	147	130

Model	Single pump power (kW)	Inlet/outlet pipe DN	Pressure tank (L)	Flow (m³/h)	5	6	8	10	12	14	16	17
2DRL5-3	0.55	50	60/10	Head (m)	21	20.5	19	17.5	15	12	9	7.5
2DRL5-4	0.55	50	60/10		28	27.5	26	24	21	17	13	11
2DRL5-5	0.75	50	60/10		35	34.5	33	30	27	23	18	15
2DRL5-6	1.1	50	60/10		42	41.5	40	37	33	27	21	18
2DRL5-7	1.1	50	60/10		49.5	48.5	46	42.5	38.5	31.5	24.5	21
2DRL5-8	1.1	50	60/10		57	56	53	49	44	36	28	24
2DRL5-10	1.5	50	60/10		71	70	66	62	55	46	35	30
2DRL5-12	2.2	50	60/10		85	84	81	74.5	66	55	43	37
2DRL5-14	2.2	50	60/10		100	98	93	87	77	65	51	43.5
2DRL5-16	2.2	50	60/16		114	112	107	99	88	74	58	50
2DRL5-19	3	50	60/16		136	133.5	126.5	117	105	89	70	60
2DRL5-22	4	50	60/16		157	154	146	136	122	103	82	70

Model	Single pump power (kW)	Inlet/outlet pipe DN	Pressure tank (L)	Flow (m³/h)	10	12	16	20	24	28
2DRL10-3	1.1	65	60/10	Head (m)	31.5	31	28.5	25.5	22	16.5
2DRL10-4	1.5	65	60/10		42	41	38	34	29	22
2DRL10-5	2.2	65	60/10		52.5	51	48	43	37	28
2DRL10-6	2.2	65	60/10		63	62	58	52	44	34
2DRL10-8	3	65	60/10		85	84	79	71	60	46
2DRL10-10	4	65	60/10		107	105	98	89	76	58
2DRL10-12	4.5	65	60/16		129	127	119	107	91	70
2DRL10-14	5.5	65	60/16		151	148	139	125	106	82
2DRL10-16	7.5	65	60/16		173	170	159	144	123	94
2DRL10-18	7.5	65	60/25		195	191	180	163	141	108
2DRL10-20	7.5	65	60/25		217	213	200	181	155	120



## MODEL SELECTION

Model	Single pump power (kW)	Inlet/outlet pipe DN	Pressure tank (L)	Flow (m³/h)	Head (m)							
					16	20	24	28	30	32	36	40
2DRL15-2	2.2	80	80/10	Head (m)	24.5	24	23.5	23	22.5	21.5	20	18
2DRL15-3	3	80	80/10		37.5	37	36.5	35.5	34.5	34	32	29
2DRL15-4	4	80	80/10		50.5	50	49	47.5	47	46	43	39
2DRL15-5	4	80	80/10		63	62	61	59	58	57	53	48
2DRL15-6	5.5	80	80/10		76	75	73	71	69	67	63	58
2DRL15-7	5.5	80	80/10		89	88	86	83	81	79	74	68
2DRL15-8	7.5	80	80/10		102	100	98	95	93	91	85	78
2DRL15-10	11	80	80/16		128	126	124	121	118	115	107	98
2DRL15-12	11	80	80/16		154	152	149	145	142	138	129	117
2DRL15-14	11	80	80/25		180	177	173	168	165	160	149	136
2DRL15-16	15	80	80/25		209	205	200	194	189	184	172	157

Model	Single pump power (kW)	Inlet/outlet pipe DN	Pressure tank (L)	Flow (m³/h)	Head (m)								
					20	24	28	32	36	40	44	48	52
2DRL20-2	2.2	80	80/10	Head (m)	25.5	25	24.5	24	23.7	23	22	20.5	18
2DRL20-3	4	80	80/10		39.5	39	38	37	36	35	33	31	28
2DRL20-4	5.5	80	80/10		52.5	51	50	49	48.5	47	45	41.5	37
2DRL20-5	5.5	80	80/10		66	65	64	62	60	58	55	51	47
2DRL20-6	7.5	80	80/10		79	78	77	75	73	70	66	62	58
2DRL20-7	7.5	80	80/10		92.5	91	90	88	85	82	78	73	68
2DRL20-8	11	80	80/10		106	105	103	101	98	95	90	84	77
2DRL20-10	11	80	80/16		133	132	130	127	123	119	113	106	97
2DRL20-12	15	80	80/16		160	158	156	153	149	143	137	127	117
2DRL20-14	15	80	80/25		187	185	183	179	174	168	160	149	137
2DRL20-17	18.5	80	80/25		228	225	222	218	212	205	195	182	168

Model	Single pump power (kW)	Inlet/outlet pipe DN	Pressure tank (L)	Flow (m³/h)	Head (m)						
					32	40	48	56	64	72	80
2DRL32-20-2	3.0	100	100/10	Head (m)	29	28	26	23	20	16	11
2DRL32-20	4.0	100	100/10		36	34	32	29	27	23	18
2DRL32-30-2	5.5	100	100/10		47	44	41	38	33	28	21
2DRL32-30	5.5	100	100/10		54	51	48	44	40	35	27
2DRL32-40-2	7.5	100	100/10		65	62	58	53	46	40	30
2DRL32-40	7.5	100	100/10		72	69	65	59	53	47	37
2DRL32-50-2	11	100	100/10		83	79	74	68	60	52	41
2DRL32-50	11	100	100/10		90	86	81	74	67	59	47
2DRL32-60-2	11	100	100/10		101	97	90	83	74	65	51
2DRL32-60	11	100	100/10		108	104	97	90	81	72	57
2DRL32-70-2	15	100	100/16		119	114	107	98	88	78	60

## MODEL SELECTION

Model	Single pump power (kW)	Inlet/outlet pipe DN	Pressure tank (L)	Flow (m³/h)	Head (m)						
					32	40	48	56	64	72	80
2DRL32-70	15	100	100/16	Head (m)	126	121	113	105	95	85	67
2DRL32-80-2	15	100	100/16		136	131	123	114	102	90	71
2DRL32-80	15	100	100/16		144	138	130	120	109	97	77
2DRL32-90-2	18.5	100	100/16		154	148	140	129	117	102	82
2DRL32-90	18.5	100	100/16		162	156	147	136	124	109	88
2DRL32-100-2	18.5	100	100/25		175	166	157	146	131	115	91
2DRL32-100	18.5	100	100/25		182	173	164	152	138	122	98
2DRL32-110-2	22	100	100/25		193	184	173	164	146	128	102
2DRL32-110	22	100	100/25		200	191	180	168	153	135	109
2DRL32-120-2	22	100	100/25		211	201	189	178	160	140	113
2DRL32-120	22	100	100/25		218	208	196	184	167	147	120
2DRL32-130-2	30	100	100/25		230	218	206	193	174	153	124
2DRL32-130	30	100	100/25		237	225	213	200	181	160	131
2DRL32-140-2	30	100	100/25		247	235	222	210	189	165	135
2DRL32-140	30	100	100/25		255	242	229	216	196	172	142

Model	Single pump power (kW)	Inlet/outlet pipe DN	Pressure tank (L)	Flow (m³/h)	Head (m)							
					50	60	70	80	84	90	100	110
2DRL42-10	4.0	125	100/10	Head (m)	24	23	22	21	20	19	18	16
2DRL42-20-2	5.5	125	100/10		40	38	36	33	32	30	27	23
2DRL42-20	7.5	125	100/10		48	46	44	42	41	39	35	31
2DRL42-30-2	11	125	100/10		63	61	58	54	52	50	44	38
2DRL42-30	11	125	100/10		71	69	66	63	61	58	53	47
2DRL42-40-2	15	125	100/10		87	84	80	75	73	69	62	54
2DRL42-40	15	125	100/10		95	92	88	84	81	78	71	62
2DRL42-50-2	18.5	125	100/16		111	107	102	96	93	88	80	69
2DRL42-50	18.5	125	100/16		119	115	110	105	101	97	88	78
2DRL42-60-2	22	125	100/16		135	130	124	117	113	108	97	85
2DRL42-60	22	125	100/16		143	138	132	125	122	116	106	93
2DRL42-70-2	30	125	100/16		158	152	146	138	134	127	115	100
2DRL42-70	30	125	100/16		166	161	154	146	142	135	124	109
2DRL42-80-2	30	125	100/16		182	175	168	159	154	146	133	116
2DRL42-80	30	125	100/25		190	184	176	167	162	154	141	124
2DRL42-90-2	30	125	100/25		205	198	190	180	174	166	150	132
2DRL42-90	37	125	100/25		214	207	198	188	183	174	159	140
2DRL42-100-2	37	125	100/25		230	221	212	200	194	185	168	147
2DRL42-100	37	125	100/25		238	230	220	209	203	193	177	155
2DRL42-110-2	45	125	100/25		255	246	236	223	217	206	188	165
2DRL42-110	45	125	100/40	263	255	244	232	225	214	196	173	
2DRL42-120-2	45	125	100/40	280	270	259	245	238	226	206	181	
2DRL42-120	45	125	100/40	289	280	268	255	247	236	216	190	

» MODEL SELECTION

MODEL SELECTION «

Model	Single pump power (kW)	Inlet/outlet pipe DN	Pressure tank (L)	Flow (m³/h)	60	80	100	120	130	140	160
2DRL65-10	5.5	150	100/10	Head (m)	27	25	23	21	20	18	15
2DRL65-20-2	7.5	150	100/10		39	36	33	29	26	23	17
2DRL65-20-1	11	150	100/10		46	44	40	36	33	30	24
2DRL65-20	11	150	100/10		53	51	47	43	40	37	30
2DRL65-30-2	15	150	100/10		66	62	56	50	46	41	32
2DRL65-30-1	15	150	100/10		73	69	63	57	53	48	39
2DRL65-30	18.5	150	100/10		80	76	70	64	60	55	46
2DRL65-40-2	18.5	150	100/10		92	87	80	71	66	60	47
2DRL65-40-1	22	150	100/10		100	94	87	78	73	67	54
2DRL65-40	22	150	100/10		107	101	94	85	80	74	61
2DRL65-50-2	30	150	100/16		121	114	105	95	88	80	64
2DRL65-50-1	30	150	100/16		128	121	112	102	95	87	71
2DRL65-50	30	150	100/16		136	129	119	109	102	94	78
2DRL65-60-2	30	150	100/16		150	142	131	118	110	101	81
2DRL65-60-1	37	150	100/16		157	149	138	125	117	108	88
2DRL65-60	37	150	100/16		164	156	145	132	124	115	95
2DRL65-70-2	37	150	100/25		179	169	156	141	132	121	99
2DRL65-70-1	37	150	100/25		186	176	163	148	139	128	106
2DRL65-70	45	150	100/25		193	183	170	155	146	135	112
2DRL65-80-2	45	150	100/25		207	196	182	164	154	142	116
2DRL65-80-1	45	150	100/25	215	203	189	171	161	149	123	

Model	Single pump power (kW)	Inlet/outlet pipe DN	Pressure tank (L)	Flow (m³/h)	100	120	140	160	170	180	200	220
2DRL85-10	7.5	150	100/10	Head (m)	25	24	22	21	20	19	16	12
2DRL85-20-2	11	150	100/10		41	39	36	32	30	28	22	15
2DRL85-20	15	150	100/10		53	50	47	44	41	40	36	30
2DRL85-30-2	18.5	150	100/10		68	65	60	55	52	49	41	32
2DRL85-30	22	150	100/10		81	77	72	67	64	62	55	48
2DRL85-40-2	30	150	100/10		98	93	87	80	75	72	62	50
2DRL85-40	30	150	100/10		110	105	100	92	86	84	76	66
2DRL85-50-2	37	150	100/16		126	120	113	104	98	93	81	68
2DRL85-50	37	150	100/16		139	131	124	115	110	106	94	83
2DRL85-60-2	45	150	100/16		155	148	139	129	122	117	102	86
2DRL85-60	45	150	100/16		168	160	150	141	134	130	117	103

Model	Single pump power (kW)	Inlet/outlet pipe DN	Pressure tank (L)	Flow (m³/h)	120	140	160	180	200	220	240	260	280	300
2DRL120-20-2	15	200	200/10	Head (m)	34	33.6	33	31	30.2	30	28.5	27	25	24
2DRL120-20-1	18.5	200	200/10		41	40	39.5	38.5	37	36.5	34.5	32.5	30	27.5

Model	Single pump power (kW)	Inlet/outlet pipe DN	Pressure tank (L)	Flow (m³/h)	120	140	160	180	200	220	240	260	280	300
2DRL120-20	22	200	200/10	Head (m)	46	45	44.5	43.5	42.4	41	40	38	36	33.5
2DRL120-30-2	30	200	200/10		57	56	55	53.5	52	51	49	46.5	43.5	41
2DRL120-30-1	30	200	200/10		64	63	62	60	58.5	57.5	55.5	52	49	46
2DRL120-30	30	200	200/10		69.5	68.5	67.5	66	64.4	62.5	61	57.5	54.5	51
2DRL120-40-2	37	200	200/10		80.5	79	78	76	73.5	72	69	66	61.5	58
2DRL120-40-1	37	200	200/10		87	86	84.5	82	80	78	76	72	68	64.5
2DRL120-40	45	200	200/10		92.5	91	90	88	85.5	83	81	77	73	68.5
2DRL120-50-2	45	200	200/10		104.5	103	101	99	96	93	90	85.5	80.5	75.5
2DRL120-50-1	45	200	200/16		110.5	109	107.5	105	102	100	97	92	86.5	83
2DRL120-50	55	200	200/16		115.5	114	113	110	107.5	104.5	101.5	96	91	86
2DRL120-60-2	55	200	200/16		128	125.5	123	121	117.3	113.5	110	104.5	98.5	92.5
2DRL120-60-1	55	200	200/16		134	132	130.5	127	124	121	118	111	105	100
2DRL120-60	75	200	200/16		139	137	135	132	128.8	126	123	116	110	104
2DRL120-70-2	75	200	200/16		151	148	145.5	143	138.6	134	130	123.5	116.5	109
2DRL120-70-1	75	200	200/25		156.5	154	152	148.5	144.5	141	137.5	130	123	116.5
2DRL120-70	75	200	200/25		162.5	160.5	158.5	155	151	148	145	137	129	123

Model	Single pump power (kW)	Inlet/outlet pipe DN	Pressure tank (L)	Flow (m³/h)	160	180	200	220	240	260	280	300	320	340	360
2DRL150-20-2	18.5	200	200/10	Head (m)	37	35.5	34	33	32	31	29	27.5	26	23	21
2DRL150-20-1	22	200	200/10		44.3	43	42	40	39	38.5	37.5	35	33	30	27
2DRL150-20	30	200	200/10		50	49	48	47	45.5	44	42	40	37	34	32
2DRL150-30-2	30	200	200/10		63.5	61	59	57.5	56	54.5	53	49	45.5	42	39
2DRL150-30-1	37	200	200/10		70	68	67	65	63	62	60	56	53	49	45
2DRL150-30	37	200	200/10		78	76.5	75	73	70.5	68	66	63	59	55	50.5
2DRL150-40-2	45	200	200/10		89	87	84	81.5	79	77	74.5	70.5	65.5	60	56
2DRL150-40-1	45	200	200/10		96.5	94	91.5	89	86.5	84	81.5	77	72.5	67	62
2DRL150-40	55	200	200/16		104	102	100	97	95	91	88	84	79.5	74	68
2DRL150-50-2	55	200	200/16		115.5	112	109	106	102.5	100	97	92	86	79	73.5
2DRL150-50-1	75	200	200/16		122.5	119.5	117	113.5	111.5	107.5	104.5	99	93.5	87	80
2DRL150-50	75	200	200/16		130	127.5	125	121	119	115	111.5	106.5	101	94.5	86.5
2DRL150-60-2	75	200	200/16		140	137	133	130	126	121	118	112	106	98	91
2DRL150-60-1	75	200	200/16		148.5	145	141.7	137.5	135	131	127	120.5	114.5	106.5	97.5
2DRL150-60	75	200	200/25		157	153	149	145	142	139.5	137	130	123.5	116	109

Model	Single pump power (kW)	Inlet/outlet pipe DN	Pressure tank (L)	Flow (m³/h)	200	240	280	320	340	360	400	440
2DRL200-10-B	18.5	250	300/10	Head (m)	25.5	25	24	23	21.5	20	18	15.5
2DRL200-10-A	22	250	300/10		29	28.5	27.5	26.5	25.5	24	22	20
2DRL200-10	30	250	300/10		38.5	38	37.5	36.5	35	34	32.5	30

» MODEL SELECTION

Model	Single pump power (kW)	Inlet/outlet pipe DN	Pressure tank (L)	Flow (m³/h)	200	240	280	320	340	360	400	440
2DRL200-20-2B	37	250	300/10	Head (m)	53	51	49	47	44	41	37	32
2DRL200-20-2A	45	250	300/10		59.5	58	56	54	52.5	49	44.5	40.5
2DRL200-20-A	55	250	300/10		69	68	66	64	62	59	55.5	51
2DRL200-20	55	250	300/10		78.5	77.5	76	74	71.5	69	66	61.5
2DRL200-30-2B	75	250	300/10		91.5	89	86.5	83.5	79	75	70	63
2DRL200-30-A-B	75	250	300/10		95	93	90	87	83.5	79	73.5	67
2DRL200-30-2A	75	250	300/10		99.5	97.5	94.5	91.5	89	84	78.5	72
2DRL200-30-B	75	250	300/16		104.5	102.5	100	97	93	89	84.5	72.5
2DRL200-30-A	75	250	300/16		108	106	103.5	100.5	97.5	93	88	81.5
2DRL200-30	90	250	300/16		117.5	116	113.5	110.5	107	103	99	92
2DRL200-40-2B	90	250	300/16		131.5	129	125.5	121	115.5	110	103.5	94
2DRL200-40-2A	110	250	300/16		138.5	136	132	128	124	118	111	102.5
2DRL200-40-A	110	250	300/16		148	145.5	142.5	138	134	128	122	113
2DRL200-40	110	250	300/25		157.5	155.5	152.5	148	143.5	138	132.2	123.5

MODEL SELECTION «

• 3DRL Series

Model	Single pump power (kW)	Inlet/outlet pipe DN	Pressure tank (L)	Flow (m³/h)	3.6	4.8	6	7.2	8.4	9	9.6	10.8
3DRL3-3	0.37	50	60/10	Head (m)	21.5	21	20.5	19.5	18	17	16.5	15
3DRL3-4	0.37	50	60/10		29	28.5	27.5	26	24	23	22	20
3DRL3-5	0.55	50	60/10		36	35	33.5	32	30	29	28	25
3DRL3-6	0.55	50	60/10		43.5	42.5	41	39	36.5	35	33.5	30
3DRL3-7	0.75	50	60/10		51	50	49	46	43	41	39.5	35
3DRL3-9	1.1	50	60/10		66	65	63	60	56	53	51	45
3DRL3-11	1.1	50	60/10		80	79	77	73	68	65	62	55
3DRL3-13	1.5	50	60/10		95	93	90	86	80	77	73	64
3DRL3-15	1.5	50	60/10		110	108	105	100	94	90	86	76
3DRL3-18	2.2	50	60/16		133	130	126	120	113	108	102	90
3DRL3-22	2.2	50	60/16		162	158	154	146	137	132	125	110
3DRL3-26	3	50	60/16		192	188	180	172	161	154	147	130

Model	Single pump power (kW)	Inlet/outlet pipe DN	Pressure tank (L)	Flow (m³/h)	7.5	9	12	15	18	21	24	25.5
3DRL5-3	0.55	65	60/10	Head (m)	21	20.5	19	17.5	15	12	9	7.5
3DRL5-4	0.55	65	60/10		28	27.5	26	24	21	17	13	11
3DRL5-5	0.75	65	60/10		35	34.5	33	30	27	23	18	15
3DRL5-6	1.1	65	60/10		42	41.5	40	37	33	27	21	18
3DRL5-7	1.1	65	60/10		49.5	48.5	46	42.5	38.5	31.5	24.5	21
3DRL5-8	1.1	65	60/10		57	56	53	49	44	36	28	24
3DRL5-10	1.5	65	60/10		71	70	66	62	55	46	35	30
3DRL5-12	2.2	65	60/10		85	84	81	74.5	66	55	43	37
3DRL5-14	2.2	65	60/10		100	98	93	87	77	65	51	43.5
3DRL5-16	2.2	65	60/16		114	112	107	99	88	74	58	50
3DRL5-19	3	65	60/16		136	133.5	126.5	117	105	89	70	60
3DRL5-22	4	65	60/16		157	154	146	136	122	103	82	70

Model	Single pump power (kW)	Inlet/outlet pipe DN	Pressure tank (L)	Flow (m³/h)	15	18	24	30	36	42
3DRL10-3	1.1	80	80/10	Head (m)	31.5	31	28.5	25.5	22	16.5
3DRL10-4	1.5	80	80/10		42	41	38	34	29	22
3DRL10-5	2.2	80	80/10		52.5	51	48	43	37	28
3DRL10-6	2.2	80	80/10		63	62	58	52	44	34
3DRL10-8	3	80	80/10		85	84	79	71	60	46
3DRL10-10	4	80	80/10		107	105	98	89	76	58
3DRL10-12	4.5	80	80/16		129	127	119	107	91	70
3DRL10-14	5.5	80	80/16		151	148	139	125	106	82
3DRL10-16	7.5	80	80/16		173	170	159	144	123	94
3DRL10-18	7.5	80	80/25		195	191	180	163	141	108
3DRL10-20	7.5	80	80/25		217	213	200	181	155	120

» MODEL SELECTION

Model	Single pump power (kW)	Inlet/outlet pipe DN	Pressure tank (L)	Flow (m³/h)	24	30	36	42	45	48	54	60
3DRL15-2	2.2	100	100/10	Head (m)	24.5	24	23.5	23	22.5	21.5	20	18
3DRL15-3	3	100	100/10		37.5	37	36.5	35.5	34.5	34	32	29
3DRL15-4	4	100	100/10		50.5	50	49	47.5	47	46	43	39
3DRL15-5	4	100	100/10		63	62	61	59	58	57	53	48
3DRL15-6	5.5	100	100/10		76	75	73	71	69	67	63	58
3DRL15-7	5.5	100	100/10		89	88	86	83	81	79	74	68
3DRL15-8	7.5	100	100/10		102	100	98	95	93	91	85	78
3DRL15-10	11	100	100/16		128	126	124	121	118	115	107	98
3DRL15-12	11	100	100/16		154	152	149	145	142	138	129	117
3DRL15-14	11	100	100/25		180	177	173	168	165	160	149	136
3DRL15-16	15	100	100/25		209	205	200	194	189	184	172	157

Model	Single pump power (kW)	Inlet/outlet pipe DN	Pressure tank (L)	Flow (m³/h)	30	36	42	48	54	60	66	72	78
3DRL20-2	2.2	100	100/10	Head (m)	25.5	25	24.5	24	23.7	23	22	20.5	18
3DRL20-3	4	100	100/10		39.5	39	38	37	36	35	33	31	28
3DRL20-4	5.5	100	100/10		52.5	51	50	49	48.5	47	45	41.5	37
3DRL20-5	5.5	100	100/10		66	65	64	62	60	58	55	51	47
3DRL20-6	7.5	100	100/10		79	78	77	75	73	70	66	62	58
3DRL20-7	7.5	100	100/10		92.5	91	90	88	85	82	78	73	68
3DRL20-8	11	100	100/10		106	105	103	101	98	95	90	84	77
3DRL20-10	11	100	100/16		133	132	130	127	123	119	113	106	97
3DRL20-12	15	100	100/16		160	158	156	153	149	143	137	127	117
3DRL20-14	15	100	100/25		187	185	183	179	174	168	160	149	137
3DRL20-17	18.5	100	100/25		228	225	222	218	212	205	195	182	168

Model	Single pump power (kW)	Inlet/outlet pipe DN	Pressure tank (L)	Flow (m³/h)	48	60	72	84	96	108	120
3DRL32-20-2	3.0	125	100/10	Head (m)	29	28	26	23	20	16	11
3DRL32-20	4.0	125	100/10		36	34	32	29	27	23	18
3DRL32-30-2	5.5	125	100/10		47	44	41	38	33	28	21
3DRL32-30	5.5	125	100/10		54	51	48	44	40	35	27
3DRL32-40-2	7.5	125	100/10		65	62	58	53	46	40	30
3DRL32-40	7.5	125	100/10		72	69	65	59	53	47	37
3DRL32-50-2	11	125	100/10		83	79	74	68	60	52	41
3DRL32-50	11	125	100/10		90	86	81	74	67	59	47
3DRL32-60-2	11	125	100/10		101	97	90	83	74	65	51
3DRL32-60	11	125	100/10		108	104	97	90	81	72	57

MODEL SELECTION «

Model	Single pump power (kW)	Inlet/outlet pipe DN	Pressure tank (L)	Flow (m³/h)	48	60	72	84	96	108	120
3DRL32-70-2	15	125	100/16	Head (m)	119	114	107	98	88	78	60
3DRL32-70	15	125	100/16		126	121	113	105	95	85	67
3DRL32-80-2	15	125	100/16		136	131	123	114	102	90	71
3DRL32-80	15	125	100/16		144	138	130	120	109	97	77
3DRL32-90-2	18.5	125	100/16		154	148	140	129	117	102	82
3DRL32-90	18.5	125	100/16		162	156	147	136	124	109	88
3DRL32-100-2	18.5	125	100/25		175	166	157	146	131	115	91
3DRL32-100	18.5	125	100/25		182	173	164	152	138	122	98
3DRL32-110-2	22	125	100/25		193	184	173	164	146	128	102
3DRL32-110	22	125	100/25		200	191	180	168	153	135	109
3DRL32-120-2	22	125	100/25		211	201	189	178	160	140	113
3DRL32-120	22	125	100/25		218	208	196	184	167	147	120
3DRL32-130-2	30	125	100/25		230	218	206	193	174	153	124
3DRL32-130	30	125	100/25		237	225	213	200	181	160	131
3DRL32-140-2	30	125	100/25		247	235	222	210	189	165	135
3DRL32-140	30	125	100/25		255	242	229	216	196	172	142

Model	Single pump power (kW)	Inlet/outlet pipe DN	Pressure tank (L)	Flow (m³/h)	75	90	105	120	126	135	150	165
3DRL42-10	4.0	150	200/10	Head (m)	24	23	22	21	20	19	18	16
3DRL42-20-2	5.5	150	200/10		40	38	36	33	32	30	27	23
3DRL42-20	7.5	150	200/10		48	46	44	42	41	39	35	31
3DRL42-30-2	11	150	200/10		63	61	58	54	52	50	44	38
3DRL42-30	11	150	200/10		71	69	66	63	61	58	53	47
3DRL42-40-2	15	150	200/10		87	84	80	75	73	69	62	54
3DRL42-40	15	150	200/10		95	92	88	84	81	78	71	62
3DRL42-50-2	18.5	150	200/16		111	107	102	96	93	88	80	69
3DRL42-50	18.5	150	200/16		119	115	110	105	101	97	88	78
3DRL42-60-2	22	150	200/16		135	130	124	117	113	108	97	85
3DRL42-60	22	150	200/16		143	138	132	125	122	116	106	93
3DRL42-70-2	30	150	200/16		158	152	146	138	134	127	115	100
3DRL42-70	30	150	200/16		166	161	154	146	142	135	124	109
3DRL42-80-2	30	150	200/25		182	175	168	159	154	146	133	116
3DRL42-80	30	150	200/25		190	184	176	167	162	154	141	124
3DRL42-90-2	30	150	200/25		205	198	190	180	174	166	150	132
3DRL42-90	37	150	200/25		214	207	198	188	183	174	159	140
3DRL42-100-2	37	150	200/25		230	221	212	200	194	185	168	147
3DRL42-100	37	150	200/25		238	230	220	209	203	193	177	155
3DRL42-110-2	45	150	200/40		255	246	236	223	217	206	188	165
3DRL42-110	45	150	200/40	263	255	244	232	225	214	196	173	
3DRL42-120-2	45	150	200/40	280	270	259	245	238	226	206	181	
3DRL42-120	45	150	200/40	289	280	268	255	247	236	216	190	

» MODEL SELECTION

MODEL SELECTION «

Model	Single pump power (kW)	Inlet/outlet pipe DN	Pressure tank (L)	Flow (m³/h)	90	120	150	180	195	210	240
3DRL65-10	5.5	200	200/10	Head (m)	27	25	23	21	20	18	15
3DRL65-20-2	7.5	200	200/10		39	36	33	29	26	23	17
3DRL65-20-1	11	200	200/10		46	44	40	36	33	30	24
3DRL65-20	11	200	200/10		53	51	47	43	40	37	30
3DRL65-30-2	15	200	200/10		66	62	56	50	46	41	32
3DRL65-30-1	15	200	200/10		73	69	63	57	53	48	39
3DRL65-30	18.5	200	200/10		80	76	70	64	60	55	46
3DRL65-40-2	18.5	200	200/10		92	87	80	71	66	60	47
3DRL65-40-1	22	200	200/10		100	94	87	78	73	67	54
3DRL65-40	22	200	200/10		107	101	94	85	80	74	61
3DRL65-50-2	30	200	200/16		121	114	105	95	88	80	64
3DRL65-50-1	30	200	200/16		128	121	112	102	95	87	71
3DRL65-50	30	200	200/16		136	129	119	109	102	94	78
3DRL65-60-2	30	200	200/16		150	142	131	118	110	101	81
3DRL65-60-1	37	200	200/16		157	149	138	125	117	108	88
3DRL65-60	37	200	200/16		164	156	145	132	124	115	95
3DRL65-70-2	37	200	200/16		179	169	156	141	132	121	99
3DRL65-70-1	37	200	200/25		186	176	163	148	139	128	106
3DRL65-70	45	200	200/25		193	183	170	155	146	135	112
3DRL65-80-2	45	200	200/25		207	196	182	164	154	142	116
3DRL65-80-1	45	200	200/25	215	203	189	171	161	149	123	

Model	Single pump power (kW)	Inlet/outlet pipe DN	Pressure tank (L)	Flow (m³/h)	150	180	210	240	255	270	300	330
3DRL85-10	7.5	200	200/10	Head (m)	25	24	22	21	20	19	16	12
3DRL85-20-2	11	200	200/10		41	39	36	32	30	28	22	15
3DRL85-20	15	200	200/10		53	50	47	44	41	40	36	30
3DRL85-30-2	18.5	200	200/10		68	65	60	55	52	49	41	32
3DRL85-30	22	200	200/10		81	77	72	67	64	62	55	48
3DRL85-40-2	30	200	200/10		98	93	87	80	75	72	62	50
3DRL85-40	30	200	200/16		110	105	100	92	86	84	76	66
3DRL85-50-2	37	200	200/16		126	120	113	104	98	93	81	68
3DRL85-50	37	200	200/16		139	131	124	115	110	106	94	83
3DRL85-60-2	45	200	200/16		155	148	139	129	122	117	102	86
3DRL85-60	45	200	200/16		168	160	150	141	134	130	117	103

Model	Single pump power (kW)	Inlet/outlet pipe DN	Pressure tank (L)	Flow (m³/h)	180	210	240	270	300	330	360	390	420	450
3DRL120-20-2	15	250	300/10	Head (m)	34	33.6	33	31	30.2	30	28.5	27	25	24
3DRL120-20-1	18.5	250	300/10		41	40	39.5	38.5	37	36.5	34.5	32.5	30	27.5

Model	Single pump power (kW)	Inlet/outlet pipe DN	Pressure tank (L)	Flow (m³/h)	180	210	240	270	300	330	360	390	420	450
3DRL120-20	22	250	300/10	Head (m)	46	45	44.5	43.5	42.4	41	40	38	36	33.5
3DRL120-30-2	30	250	300/10		57	56	55	53.5	52	51	49	46.5	43.5	41
3DRL120-30-1	30	250	300/10		64	63	62	60	58.5	57.5	55.5	52	49	46
3DRL120-30	30	250	300/10		69.5	68.5	67.5	66	64.4	62.5	61	57.5	54.5	51
3DRL120-40-2	37	250	300/10		80.5	79	78	76	73.5	72	69	66	61.5	58
3DRL120-40-1	37	250	300/10		87	86	84.5	82	80	78	76	72	68	64.5
3DRL120-40	45	250	300/10		92.5	91	90	88	85.5	83	81	77	73	68.5
3DRL120-50-2	45	250	300/10		104.5	103	101	99	96	93	90	85.5	80.5	75.5
3DRL120-50-1	45	250	300/16		110.5	109	107.5	105	102	100	97	92	86.5	83
3DRL120-50	55	250	300/16		115.5	114	113	110	107.5	104.5	101.5	96	91	86
3DRL120-60-2	55	250	300/16		128	125.5	123	121	117.3	113.5	110	104.5	98.5	92.5
3DRL120-60-1	55	250	300/16		134	132	130.5	127	124	121	118	111	105	100
3DRL120-60	75	250	300/16		139	137	135	132	128.8	126	123	116	110	104
3DRL120-70-2	75	250	300/16		151	148	145.5	143	138.6	134	130	123.5	116.5	109
3DRL120-70-1	75	250	300/25		156.5	154	152	148.5	144.5	141	137.5	130	123	116.5
3DRL120-70	75	250	300/25		162.5	160.5	158.5	155	151	148	145	137	129	123

Model	Single pump power (kW)	Inlet/outlet pipe DN	Pressure tank (L)	Flow (m³/h)	240	270	300	330	360	390	420	450	480	510	540
3DRL150-20-2	18.5	250	300/10	Head (m)	37	35.5	34	33	32	31	29	27.5	26	23	21
3DRL150-20-1	22	250	300/10		44.3	43	42	40	39	38.5	37.5	35	33	30	27
3DRL150-20	30	250	300/10		50	49	48	47	45.5	44	42	40	37	34	32
3DRL150-30-2	30	250	300/10		63.5	61	59	57.5	56	54.5	53	49	45.5	42	39
3DRL150-30-1	37	250	300/10		70	68	67	65	63	62	60	56	53	49	45
3DRL150-30	37	250	300/10		78	76.5	75	73	70.5	68	66	63	59	55	50.5
3DRL150-40-2	45	250	300/10		89	87	84	81.5	79	77	74.5	70.5	65.5	60	56
3DRL150-40-1	45	250	300/10		96.5	94	91.5	89	86.5	84	81.5	77	72.5	67	62
3DRL150-40	55	250	300/16		104	102	100	97	95	91	88	84	79.5	74	68
3DRL150-50-2	55	250	300/16		115.5	112	109	106	102.5	100	97	92	86	79	73.5
3DRL150-50-1	75	250	300/16		122.5	119.5	117	113.5	111.5	107.5	104.5	99	93.5	87	80
3DRL150-50	75	250	300/16		130	127.5	125	121	119	115	111.5	106.5	101	94.5	86.5
3DRL150-60-2	75	250	300/16		140	137	133	130	126	121	118	112	106	98	91
3DRL150-60-1	75	250	300/16		148.5	145	141.7	137.5	135	131	127	120.5	114.5	106.5	97.5
3DRL150-60	75	250	300/25		157	153	149	145	142	139.5	137	130	123.5	116	109

Model	Single pump power (kW)	Inlet/outlet pipe DN	Pressure tank (L)	Flow (m³/h)	300	360	420	480	540	600	660	720
3DRL200-10-B	18.5	300	500/10	Head (m)	25.5	25	24	23	21.5	20	18	15.5
3DRL200-10-A	22	300	500/10		29	28.5	27.5	26.5	25.5	24	22	20
3DRL200-10	30	300	500/10		38.5	38	37.5	36.5	35	34	32.5	30

Model	Single pump power (kW)	Inlet/outlet pipe DN	Pressure tank (L)	Flow (m³/h)	300	360	420	480	540	600	660	720
3DRL200-20-2B	37	300	500/10	Head (m)	53	51	49	47	44	41	37	32
3DRL200-20-2A	45	300	500/10		59.5	58	56	54	52.5	49	44.5	40.5
3DRL200-20-A	55	300	500/10		69	68	66	64	62	59	55.5	51
3DRL200-20	55	300	500/10		78.5	77.5	76	74	71.5	69	66	61.5
3DRL200-30-2B	75	300	500/10		91.5	89	86.5	83.5	79	75	70	63
3DRL200-30-A-B	75	300	500/10		95	93	90	87	83.5	79	73.5	67
3DRL200-30-2A	75	300	500/10		99.5	97.5	94.5	91.5	89	84	78.5	72
3DRL200-30-B	75	300	500/16		104.5	102.5	100	97	93	89	84.5	72.5
3DRL200-30-A	75	300	500/16		108	106	103.5	100.5	97.5	93	88	81.5
3DRL200-30	90	300	500/16		117.5	116	113.5	110.5	107	103	99	92
3DRL200-40-2B	90	300	500/16		131.5	129	125.5	121	115.5	110	103.5	94
3DRL200-40-2A	110	300	500/16		138.5	136	132	128	124	118	111	102.5
3DRL200-40-A	110	300	500/16		148	145.5	142.5	138	134	128	122	113
3DRL200-40	110	300	500/25		157.5	155.5	152.5	148	143.5	138	132.2	123.5

• 4DRL Series

Model	Single pump power (kW)	Inlet/outlet pipe DN	Pressure tank (L)	Flow (m³/h)	4.8	6.4	8	9.6	11.2	12	12.8	14.4
4DRL3-3	0.37	50	60/10	Head (m)	21.5	21	20.5	19.5	18	17	16.5	15
4DRL3-4	0.37	50	60/10		29	28.5	27.5	26	24	23	22	20
4DRL3-5	0.55	50	60/10		36	35	33.5	32	30	29	28	25
4DRL3-6	0.55	50	60/10		43.5	42.5	41	39	36.5	35	33.5	30
4DRL3-7	0.75	50	60/10		51	50	49	46	43	41	39.5	35
4DRL3-9	1.1	50	60/10		66	65	63	60	56	53	51	45
4DRL3-11	1.1	50	60/10		80	79	77	73	68	65	62	55
4DRL3-13	1.5	50	60/10		95	93	90	86	80	77	73	64
4DRL3-15	1.5	50	60/10		110	108	105	100	94	90	86	76
4DRL3-18	2.2	50	60/16		133	130	126	120	113	108	102	90
4DRL3-22	2.2	50	60/16		162	158	154	146	137	132	125	110
4DRL3-26	3	50	60/16		192	188	180	172	161	154	147	130

Model	Single pump power (kW)	Inlet/outlet pipe DN	Pressure tank (L)	Flow (m³/h)	10	12	16	20	24	28	32	34
4DRL5-3	0.55	80	60/10	Head (m)	21	20.5	19	17.5	15	12	9	7.5
4DRL5-4	0.55	80	60/10		28	27.5	26	24	21	17	13	11
4DRL5-5	0.75	80	60/10		35	34.5	33	30	27	23	18	15
4DRL5-6	1.1	80	60/10		42	41.5	40	37	33	27	21	18
4DRL5-7	1.1	80	60/10		49.5	48.5	46	42.5	38.5	31.5	24.5	21
4DRL5-8	1.1	80	60/10		57	56	53	49	44	36	28	24
4DRL5-10	1.5	80	60/10		71	70	66	62	55	46	35	30
4DRL5-12	2.2	80	60/10		85	84	81	74.5	66	55	43	37
4DRL5-14	2.2	80	60/10		100	98	93	87	77	65	51	43.5
4DRL5-16	2.2	80	60/16		114	112	107	99	88	74	58	50
4DRL5-19	3	80	60/16		136	133.5	126.5	117	105	89	70	60
4DRL5-22	4	80	60/16		157	154	146	136	122	103	82	70

Model	Single pump power (kW)	Inlet/outlet pipe DN	Pressure tank (L)	Flow (m³/h)	20	24	32	40	48	56
4DRL10-3	1.1	100	100/10	Head (m)	31.5	31	28.5	25.5	22	16.5
4DRL10-4	1.5	100	100/10		42	41	38	34	29	22
4DRL10-5	2.2	100	100/10		52.5	51	48	43	37	28
4DRL10-6	2.2	100	100/10		63	62	58	52	44	34
4DRL10-8	3	100	100/10		85	84	79	71	60	46
4DRL10-10	4	100	100/10		107	105	98	89	76	58
4DRL10-12	4.5	100	100/16		129	127	119	107	91	70
4DRL10-14	5.5	100	100/16		151	148	139	125	106	82
4DRL10-16	7.5	100	100/16		173	170	159	144	123	94
4DRL10-18	7.5	100	100/25		195	191	180	163	141	108
4DRL10-20	7.5	100	100/25		217	213	200	181	155	120

## MODEL SELECTION

Model	Single pump power (kW)	Inlet/outlet pipe DN	Pressure tank (L)	Flow (m <sup>3</sup> /h)	32	40	48	56	60	64	72	80
4DRL15-2	2.2	125	100/10	Head (m)	24.5	24	23.5	23	22.5	21.5	20	18
4DRL15-3	3	125	100/10		37.5	37	36.5	35.5	34.5	34	32	29
4DRL15-4	4	125	100/10		50.5	50	49	47.5	47	46	43	39
4DRL15-5	4	125	100/10		63	62	61	59	58	57	53	48
4DRL15-6	5.5	125	100/10		76	75	73	71	69	67	63	58
4DRL15-7	5.5	125	100/10		89	88	86	83	81	79	74	68
4DRL15-8	7.5	125	100/10		102	100	98	95	93	91	85	78
4DRL15-10	11	125	100/16		128	126	124	121	118	115	107	98
4DRL15-12	11	125	100/16		154	152	149	145	142	138	129	117
4DRL15-14	11	125	100/25		180	177	173	168	165	160	149	136
4DRL15-16	15	125	100/25		209	205	200	194	189	184	172	157

Model	Single pump power (kW)	Inlet/outlet pipe DN	Pressure tank (L)	Flow (m <sup>3</sup> /h)	40	48	56	64	72	80	88	96	108
4DRL20-2	2.2	125	100/10	Head (m)	25.5	25	24.5	24	23.7	23	22	20.5	18
4DRL20-3	4	125	100/10		39.5	39	38	37	36	35	33	31	28
4DRL20-4	5.5	125	100/10		52.5	51	50	49	48.5	47	45	41.5	37
4DRL20-5	5.5	125	100/10		66	65	64	62	60	58	55	51	47
4DRL20-6	7.5	125	100/10		79	78	77	75	73	70	66	62	58
4DRL20-7	7.5	125	100/10		92.5	91	90	88	85	82	78	73	68
4DRL20-8	11	125	100/10		106	105	103	101	98	95	90	84	77
4DRL20-10	11	125	100/16		133	132	130	127	123	119	113	106	97
4DRL20-12	15	125	100/16		160	158	156	153	149	143	137	127	117
4DRL20-14	15	125	100/25		187	185	183	179	174	168	160	149	137
4DRL20-17	18.5	125	100/25		228	225	222	218	212	205	195	182	168

Model	Single pump power (kW)	Inlet/outlet pipe DN	Pressure tank (L)	Flow (m <sup>3</sup> /h)	64	80	96	112	128	144	160
4DRL32-20-2	3.0	150	200/10	Head (m)	29	28	26	23	20	16	11
4DRL32-20	4.0	150	200/10		36	34	32	29	27	23	18
4DRL32-30-2	5.5	150	200/10		47	44	41	38	33	28	21
4DRL32-30	5.5	150	200/10		54	51	48	44	40	35	27
4DRL32-40-2	7.5	150	200/10		65	62	58	53	46	40	30
4DRL32-40	7.5	150	200/10		72	69	65	59	53	47	37
4DRL32-50-2	11	150	200/10		83	79	74	68	60	52	41
4DRL32-50	11	150	200/10		90	86	81	74	67	59	47
4DRL32-60-2	11	150	200/10		101	97	90	83	74	65	51
4DRL32-60	11	150	200/10		108	104	97	90	81	72	57
4DRL32-70-2	15	150	200/16		119	114	107	98	88	78	60
4DRL32-70	15	150	200/16		126	121	113	105	95	85	67

## MODEL SELECTION

Model	Single pump power (kW)	Inlet/outlet pipe DN	Pressure tank (L)	Flow (m <sup>3</sup> /h)	64	80	96	112	128	144	160
4DRL32-80-2	15	150	200/16	Head (m)	136	131	123	114	102	90	71
4DRL32-80	15	150	200/16		144	138	130	120	109	97	77
4DRL32-90-2	18.5	150	200/16		154	148	140	129	117	102	82
4DRL32-90	18.5	150	200/16		162	156	147	136	124	109	88
4DRL32-100-2	18.5	150	200/25		175	166	157	146	131	115	91
4DRL32-100	18.5	150	200/25		182	173	164	152	138	122	98
4DRL32-110-2	22	150	200/25		193	184	173	164	146	128	102
4DRL32-110	22	150	200/25		200	191	180	168	153	135	109
4DRL32-120-2	22	150	200/25		211	201	189	178	160	140	113
4DRL32-120	22	150	200/25		218	208	196	184	167	147	120
4DRL32-130-2	30	150	200/25		230	218	206	193	174	153	124
4DRL32-130	30	150	200/25		237	225	213	200	181	160	131
4DRL32-140-2	30	150	200/25		247	235	222	210	189	165	135
4DRL32-140	30	150	200/25	255	242	229	216	196	172	142	

Model	Single pump power (kW)	Inlet/outlet pipe DN	Pressure tank (L)	Flow (m <sup>3</sup> /h)	100	120	140	160	168	180	200	220
4DRL42-10	4.0	150	200/10	Head (m)	24	23	22	21	20	19	18	16
4DRL42-20-2	5.5	150	200/10		40	38	36	33	32	30	27	23
4DRL42-20	7.5	150	200/10		48	46	44	42	41	39	35	31
4DRL42-30-2	11	150	200/10		63	61	58	54	52	50	44	38
4DRL42-30	11	150	200/10		71	69	66	63	61	58	53	47
4DRL42-40-2	15	150	200/10		87	84	80	75	73	69	62	54
4DRL42-40	15	150	200/10		95	92	88	84	81	78	71	62
4DRL42-50-2	18.5	150	200/16		111	107	102	96	93	88	80	69
4DRL42-50	18.5	150	200/16		119	115	110	105	101	97	88	78
4DRL42-60-2	22	150	200/16		135	130	124	117	113	108	97	85
4DRL42-60	22	150	200/16		143	138	132	125	122	116	106	93
4DRL42-70-2	30	150	200/16		158	152	146	138	134	127	115	100
4DRL42-70	30	150	200/16		166	161	154	146	142	135	124	109
4DRL42-80-2	30	150	200/25		182	175	168	159	154	146	133	116
4DRL42-80	30	150	200/25		190	184	176	167	162	154	141	124
4DRL42-90-2	30	150	200/25		205	198	190	180	174	166	150	132
4DRL42-90	37	150	200/25		214	207	198	188	183	174	159	140
4DRL42-100-2	37	150	200/25		230	221	212	200	194	185	168	147
4DRL42-100	37	150	200/25		238	230	220	209	203	193	177	155
4DRL42-110-2	45	150	200/25		255	246	236	223	217	206	188	165
4DRL42-110	45	150	200/40	263	255	244	232	225	214	196	173	
4DRL42-120-2	45	150	200/40	280	270	259	245	238	226	206	181	
4DRL42-120	45	150	200/40	289	280	268	255	247	236	216	190	
4DRL42-130-2	45	150	200/40	305	294	282	267	259	247	225	198	

Model	Single pump power (kW)	Inlet/outlet pipe DN	Pressure tank (L)	Flow (m³/h)	Head (m)						
					120	160	200	240	260	280	320
4DRL65-10	5.5	200	200/10	Head (m)	27	25	23	21	20	18	15
4DRL65-20-2	7.5	200	200/10		39	36	33	29	26	23	17
4DRL65-20-1	11	200	200/10		46	44	40	36	33	30	24
4DRL65-20	11	200	200/10		53	51	47	43	40	37	30
4DRL65-30-2	15	200	200/10		66	62	56	50	46	41	32
4DRL65-30-1	15	200	200/10		73	69	63	57	53	48	39
4DRL65-30	18.5	200	200/10		80	76	70	64	60	55	46
4DRL65-40-2	18.5	200	200/10		92	87	80	71	66	60	47
4DRL65-40-1	22	200	200/10		100	94	87	78	73	67	54
4DRL65-40	22	200	200/10		107	101	94	85	80	74	61
4DRL65-50-2	30	200	200/16		121	114	105	95	88	80	64
4DRL65-50-1	30	200	200/16		128	121	112	102	95	87	71
4DRL65-50	30	200	200/16		136	129	119	109	102	94	78
4DRL65-60-2	30	200	200/16		150	142	131	118	110	101	81
4DRL65-60-1	37	200	200/16		157	149	138	125	117	108	88
4DRL65-60	37	200	200/16		164	156	145	132	124	115	95
4DRL65-70-2	37	200	200/25		179	169	156	141	132	121	99
4DRL65-70-1	37	200	200/25		186	176	163	148	139	128	106
4DRL65-70	45	200	200/25		193	183	170	155	146	135	112
4DRL65-80-2	45	200	200/25		207	196	182	164	154	142	116
4DRL65-80-1	45	200	200/25	215	203	189	171	161	149	123	

Model	Single pump power (kW)	Inlet/outlet pipe DN	Pressure tank (L)	Flow (m³/h)	Head (m)							
					200	240	280	320	340	360	400	440
4DRL85-10	7.5	200	200/10	Head (m)	25	24	22	21	20	19	16	12
4DRL85-20-2	11	200	200/10		41	39	36	32	30	28	22	15
4DRL85-20	15	200	200/10		53	50	47	44	41	40	36	30
4DRL85-30-2	18.5	200	200/10		68	65	60	55	52	49	41	32
4DRL85-30	22	200	200/10		81	77	72	67	64	62	55	48
4DRL85-40-2	30	200	200/10		98	93	87	80	75	72	62	50
4DRL85-40	30	200	200/16		110	105	100	92	86	84	76	66
4DRL85-50-2	37	200	200/16		126	120	113	104	98	93	81	68
4DRL85-50	37	200	200/16		139	131	124	115	110	106	94	83
4DRL85-60-2	45	200	200/16		155	148	139	129	122	117	102	86
4DRL85-60	45	200	200/16		168	160	150	141	134	130	117	103

Model	Single pump power (kW)	Inlet/outlet pipe DN	Pressure tank (L)	Flow (m³/h)	Head (m)									
					240	280	320	360	400	440	480	520	560	600
4DRL120-20-2	15	250	300/10	Head (m)	34	33.6	33	31	30.2	30	28.5	27	25	24
4DRL120-20-1	18.5	250	300/10		41	40	39.5	38.5	37	36.5	34.5	32.5	30	27.5

Model	Single pump power (kW)	Inlet/outlet pipe DN	Pressure tank (L)	Flow (m³/h)	Head (m)									
					240	280	320	360	400	440	480	520	560	600
4DRL120-20	22	250	300/10	Head (m)	46	45	44.5	43.5	42.4	41	40	38	36	33.5
4DRL120-30-2	30	250	300/10		57	56	55	53.5	52	51	49	46.5	43.5	41
4DRL120-30-1	30	250	300/10		64	63	62	60	58.5	57.5	55.5	52	49	46
4DRL120-30	30	250	300/10		69.5	68.5	67.5	66	64.4	62.5	61	57.5	54.5	51
4DRL120-40-2	37	250	300/10		80.5	79	78	76	73.5	72	69	66	61.5	58
4DRL120-40-1	37	250	300/10		87	86	84.5	82	80	78	76	72	68	64.5
4DRL120-40	45	250	300/10		92.5	91	90	88	85.5	83	81	77	73	68.5
4DRL120-50-2	45	250	300/10		104.5	103	101	99	96	93	90	85.5	80.5	75.5
4DRL120-50-1	45	250	300/16		110.5	109	107.5	105	102	100	97	92	86.5	83
4DRL120-50	55	250	300/16		115.5	114	113	110	107.5	104.5	101.5	96	91	86
4DRL120-60-2	55	250	300/16		128	125.5	123	121	117.3	113.5	110	104.5	98.5	92.5
4DRL120-60-1	55	250	300/16		134	132	130.5	127	124	121	118	111	105	100
4DRL120-60	75	250	300/16		139	137	135	132	128.8	126	123	116	110	104
4DRL120-70-2	75	250	300/16		151	148	145.5	143	138.6	134	130	123.5	116.5	109
4DRL120-70-1	75	250	300/25		156.5	154	152	148.5	144.5	141	137.5	130	123	116.5
4DRL120-70	75	250	300/25		162.5	160.5	158.5	155	151	148	145	137	129	123

Model	Single pump power (kW)	Inlet/outlet pipe DN	Pressure tank (L)	Flow (m³/h)	Head (m)										
					320	360	400	440	480	520	560	600	640	680	720
4DRL150-20-2	18.5	250	300/10	Head (m)	37	35.5	34	33	32	31	29	27.5	26	23	21
4DRL150-20-1	22	250	300/10		44.3	43	42	40	39	38.5	37.5	35	33	30	27
4DRL150-20	30	250	300/10		50	49	48	47	45.5	44	42	40	37	34	32
4DRL150-30-2	30	250	300/10		63.5	61	59	57.5	56	54.5	53	49	45.5	42	39
4DRL150-30-1	37	250	300/10		70	68	67	65	63	62	60	56	53	49	45
4DRL150-30	37	250	300/10		78	76.5	75	73	70.5	68	66	63	59	55	50.5
4DRL150-40-2	45	250	300/10		89	87	84	81.5	79	77	74.5	70.5	65.5	60	56
4DRL150-40-1	45	250	300/10		96.5	94	91.5	89	86.5	84	81.5	77	72.5	67	62
4DRL150-40	55	250	300/16		104	102	100	97	95	91	88	84	79.5	74	68
4DRL150-50-2	55	250	300/16		115.5	112	109	106	102.5	100	97	92	86	79	73.5
4DRL150-50-1	75	250	300/16		122.5	119.5	117	113.5	111.5	107.5	104.5	99	93.5	87	80
4DRL150-50	75	250	300/16		130	127.5	125	121	119	115	111.5	106.5	101	94.5	86.5
4DRL150-60-2	75	250	300/16		140	137	133	130	126	121	118	112	106	98	91
4DRL150-60-1	75	250	300/16		148.5	145	141.7	137.5	135	131	127	120.5	114.5	106.5	97.5
4DRL150-60	75	250	300/16		157	153	149	145	142	139.5	137	130	123.5	116	109

Model	Single pump power (kW)	Inlet/outlet pipe DN	Pressure tank (L)	Flow (m³/h)	Head (m)							
					400	480	560	640	720	800	880	960
4DRL200-10-B	18.5	300	500/10	Head (m)	25.5	25	24	23	21.5	20	18	15.5
4DRL200-10-A	22	300	500/10		29	28.5	27.5	26.5	25.5	24	22	20
4DRL200-10	30	300	500/10		38.5	38	37.5	36.5	35	34	32.5	30



Model	Single pump power (kW)	Inlet/outlet pipe DN	Pressure tank (L)	Flow (m <sup>3</sup> /h)	400	480	560	640	720	800	880	960
4DRL200-20-2B	37	300	500/10	Head (m)	53	51	49	47	44	41	37	32
4DRL200-20-2A	45	300	500/10		59.5	58	56	54	52.5	49	44.5	40.5
4DRL200-20-A	55	300	500/10		69	68	66	64	62	59	55.5	51
4DRL200-20	55	300	500/10		78.5	77.5	76	74	71.5	69	66	61.5
4DRL200-30-2B	75	300	500/10		91.5	89	86.5	83.5	79	75	70	63
4DRL200-30-A-B	75	300	500/10		95	93	90	87	83.5	79	73.5	67
4DRL200-30-2A	75	300	500/10		99.5	97.5	94.5	91.5	89	84	78.5	72
4DRL200-30-B	75	300	500/16		104.5	102.5	100	97	93	89	84.5	72.5
4DRL200-30-A	75	300	500/16		108	106	103.5	100.5	97.5	93	88	81.5
4DRL200-30	90	300	500/16		117.5	116	113.5	110.5	107	103	99	92
4DRL200-40-2B	90	300	500/16		131.5	129	125.5	121	115.5	110	103.5	94
4DRL200-40-2A	110	300	500/16		138.5	136	132	128	124	118	111	102.5
4DRL200-40-A	110	300	500/16		148	145.5	142.5	138	134	128	122	113
4DRL200-40	110	300	500/16		157.5	155.5	152.5	148	143.5	138	132.2	123.5

• 5DRL Series

Model	Single pump power (kW)	Inlet/outlet pipe DN	Pressure tank (L)	Flow (m <sup>3</sup> /h)	25	30	40	50	60	70
5DRL10-3	1.1	100	100/10	Head (m)	31.5	31	28.5	25.5	22	16.5
5DRL10-4	1.5	100	100/10		42	41	38	34	29	22
5DRL10-5	2.2	100	100/10		52.5	51	48	43	37	28
5DRL10-6	2.2	100	100/10		63	62	58	52	44	34
5DRL10-8	3	100	100/10		85	84	79	71	60	46
5DRL10-10	4	100	100/10		107	105	98	89	76	58
5DRL10-12	4.5	100	100/16		129	127	119	107	91	70
5DRL10-14	5.5	100	100/16		151	148	139	125	106	82
5DRL10-16	7.5	100	100/16		173	170	159	144	123	94
5DRL10-18	7.5	100	100/25		195	191	180	163	141	108
5DRL10-20	7.5	100	100/25		217	213	200	181	155	120

Model	Single pump power (kW)	Inlet/outlet pipe DN	Pressure tank (L)	Flow (m <sup>3</sup> /h)	40	50	60	70	75	80	90	100
5DRL15-2	2.2	125	100/10	Head (m)	24.5	24	23.5	23	22.5	21.5	20	18
5DRL15-3	3	125	100/10		37.5	37	36.5	35.5	34.5	34	32	29
5DRL15-4	4	125	100/10		50.5	50	49	47.5	47	46	43	39
5DRL15-5	4	125	100/10		63	62	61	59	58	57	53	48
5DRL15-6	5.5	125	100/10		76	75	73	71	69	67	63	58
5DRL15-7	5.5	125	100/10		89	88	86	83	81	79	74	68
5DRL15-8	7.5	125	100/10		102	100	98	95	93	91	85	78
5DRL15-10	7.5	125	100/16		128	126	124	121	118	115	107	98
5DRL15-12	11	125	100/16		154	152	149	145	142	138	129	117
5DRL15-14	11	125	100/25		180	177	173	168	165	160	149	136
5DRL15-16	11	125	100/25		209	205	200	194	189	184	172	157

Model	Single pump power (kW)	Inlet/outlet pipe DN	Pressure tank (L)	Flow (m <sup>3</sup> /h)	50	60	70	80	90	100	110	120	130
5DRL20-2	2.2	125	100/10	Head (m)	25.5	25	24.5	24	23.7	23	22	20.5	18
5DRL20-3	4	125	100/10		39.5	39	38	37	36	35	33	31	28
5DRL20-4	5.5	125	100/10		52.5	51	50	49	48.5	47	45	41.5	37
5DRL20-5	5.5	125	100/10		66	65	64	62	60	58	55	51	47
5DRL20-6	7.5	125	100/10		79	78	77	75	73	70	66	62	58
5DRL20-7	7.5	125	100/10		92.5	91	90	88	85	82	78	73	68
5DRL20-8	11	125	100/10		106	105	103	101	98	95	90	84	77
5DRL20-10	11	125	100/16		133	132	130	127	123	119	113	106	97
5DRL20-12	15	125	100/16		160	158	156	153	149	143	137	127	117
5DRL20-14	15	125	100/25		187	185	183	179	174	168	160	149	137
5DRL20-17	18.5	125	100/25		228	225	222	218	212	205	195	182	168

» MODEL SELECTION

MODEL SELECTION «

Model	Single pump power (kW)	Inlet/outlet pipe DN	Pressure tank (L)	Flow (m³/h)	80	100	120	140	160	180	200
5DRL32-20-2	3.0	200	200/10	Head (m)	29	28	26	23	20	16	11
5DRL32-20	4.0	200	200/10		36	34	32	29	27	23	18
5DRL32-30-2	5.5	200	200/10		47	44	41	38	33	28	21
5DRL32-30	5.5	200	200/10		54	51	48	44	40	35	27
5DRL32-40-2	7.5	200	200/10		65	62	58	53	46	40	30
5DRL32-40	7.5	200	200/10		72	69	65	59	53	47	37
5DRL32-50-2	11	200	200/10		83	79	74	68	60	52	41
5DRL32-50	11	200	200/10		90	86	81	74	67	59	47
5DRL32-60-2	11	200	200/10		101	97	90	83	74	65	51
5DRL32-60	11	200	200/10		108	104	97	90	81	72	57
5DRL32-70-2	15	200	200/16		119	114	107	98	88	78	60
5DRL32-70	15	200	200/16		126	121	113	105	95	85	67
5DRL32-80-2	15	200	200/16		136	131	123	114	102	90	71
5DRL32-80	15	200	200/16		144	138	130	120	109	97	77
5DRL32-90-2	18.5	200	200/16		154	148	140	129	117	102	82
5DRL32-90	18.5	200	200/16		162	156	147	136	124	109	88
5DRL32-100-2	18.5	200	200/25		175	166	157	146	131	115	91
5DRL32-100	18.5	200	200/25		182	173	164	152	138	122	98
5DRL32-110-2	22	200	200/25		193	184	173	164	146	128	102
5DRL32-110	22	200	200/25		200	191	180	168	153	135	109
5DRL32-120-2	22	200	200/25	211	201	189	178	160	140	113	
5DRL32-120	22	200	200/25	218	208	196	184	167	147	120	
5DRL32-130-2	30	200	200/25	230	218	206	193	174	153	124	
5DRL32-130	30	200	200/25	237	225	213	200	181	160	131	
5DRL32-140-2	30	200	200/25	247	235	222	210	189	165	135	
5DRL32-140	30	200	200/25	255	242	229	216	196	172	142	

Model	Single pump power (kW)	Inlet/outlet pipe DN	Pressure tank (L)	Flow (m³/h)	125	150	175	200	210	225	250	275
5DRL42-10	4.0	200	200/10	Head (m)	24	23	22	21	20	19	18	16
5DRL42-20-2	5.5	200	200/10		40	38	36	33	32	30	27	23
5DRL42-20	7.5	200	200/10		48	46	44	42	41	39	35	31
5DRL42-30-2	11	200	200/10		63	61	58	54	52	50	44	38
5DRL42-30	11	200	200/10		71	69	66	63	61	58	53	47
5DRL42-40-2	15	200	200/10		87	84	80	75	73	69	62	54
5DRL42-40	15	200	200/10		95	92	88	84	81	78	71	62
5DRL42-50-2	18.5	200	200/16		111	107	102	96	93	88	80	69
5DRL42-50	18.5	200	200/16		119	115	110	105	101	97	88	78
5DRL42-60-2	22	200	200/16		135	130	124	117	113	108	97	85

Model	Single pump power (kW)	Inlet/outlet pipe DN	Pressure tank (L)	Flow (m³/h)	125	150	175	200	210	225	250	275
5DRL42-60	22	200	200/16	Head (m)	143	138	132	125	122	116	106	93
5DRL42-70-2	30	200	200/16		158	152	146	138	134	127	115	100
5DRL42-70	30	200	200/16		166	161	154	146	142	135	124	109
5DRL42-80-2	30	200	200/25		182	175	168	159	154	146	133	116
5DRL42-80	30	200	200/25		190	184	176	167	162	154	141	124
5DRL42-90-2	30	200	200/25		205	198	190	180	174	166	150	132
5DRL42-90	37	200	200/25		214	207	198	188	183	174	159	140
5DRL42-100-2	37	200	200/25		230	221	212	200	194	185	168	147
5DRL42-100	37	200	200/25		238	230	220	209	203	193	177	155
5DRL42-110-2	45	200	200/25		255	246	236	223	217	206	188	165
5DRL42-110	45	200	200/40		263	255	244	232	225	214	196	173
5DRL42-120-2	45	200	200/40		280	270	259	245	238	226	206	181
5DRL42-120	45	200	200/40		289	280	268	255	247	236	216	190

Model	Single pump power (kW)	Inlet/outlet pipe DN	Pressure tank (L)	Flow (m³/h)	150	200	250	300	325	350	400
5DRL65-10	5.5	250	200/10	Head (m)	27	25	23	21	20	18	15
5DRL65-20-2	7.5	250	200/10		39	36	33	29	26	23	17
5DRL65-20-1	11	250	200/10		46	44	40	36	33	30	24
5DRL65-20	11	250	200/10		53	51	47	43	40	37	30
5DRL65-30-2	15	250	200/10		66	62	56	50	46	41	32
5DRL65-30-1	15	250	200/10		73	69	63	57	53	48	39
5DRL65-30	18.5	250	200/10		80	76	70	64	60	55	46
5DRL65-40-2	18.5	250	200/10		92	87	80	71	66	60	47
5DRL65-40-1	22	250	200/10		100	94	87	78	73	67	54
5DRL65-40	22	250	200/10		107	101	94	85	80	74	61
5DRL65-50-2	30	250	200/16		121	114	105	95	88	80	64
5DRL65-50-1	30	250	200/16		128	121	112	102	95	87	71
5DRL65-50	30	250	200/16		136	129	119	109	102	94	78
5DRL65-60-2	30	250	200/16		150	142	131	118	110	101	81
5DRL65-60-1	37	250	200/16		157	149	138	125	117	108	88
5DRL65-60	37	250	200/16		164	156	145	132	124	115	95
5DRL65-70-2	37	250	200/25		179	169	156	141	132	121	99
5DRL65-70-1	37	250	200/25		186	176	163	148	139	128	106
5DRL65-70	45	250	200/25		193	183	170	155	146	135	112
5DRL65-80-2	45	250	200/25		207	196	182	164	154	142	116
5DRL65-80-1	45	250	200/25	215	203	189	171	161	149	123	

» MODEL SELECTION

Model	Single pump power (kW)	Inlet/outlet pipe DN	Pressure tank (L)	Flow (m <sup>3</sup> /h)	250	300	350	400	425	450	500	550
5DRL85-10	7.5	250	300/10	Head (m)	25	24	22	21	20	19	16	12
5DRL85-20-2	11	250	300/10		41	39	36	32	30	28	22	15
5DRL85-20	15	250	300/10		53	50	47	44	41	40	36	30
5DRL85-30-2	18.5	250	300/10		68	65	60	55	52	49	41	32
5DRL85-30	22	250	300/10		81	77	72	67	64	62	55	48
5DRL85-40-2	30	250	300/10		98	93	87	80	75	72	62	50
5DRL85-40	30	250	300/16		110	105	100	92	86	84	76	66
5DRL85-50-2	37	250	300/16		126	120	113	104	98	93	81	68
5DRL85-50	37	250	300/16		139	131	124	115	110	106	94	83
5DRL85-60-2	45	250	300/16		155	148	139	129	122	117	102	86
5DRL85-60	45	250	300/16		168	160	150	141	134	130	117	103

Model	Single pump power (kW)	Inlet/outlet pipe DN	Pressure tank (L)	Flow (m <sup>3</sup> /h)	300	350	400	450	500	550	600	650	700	750
5DRL120-20-2	15	300	500/10	Head (m)	34	33.6	33	31	30.2	30	28.5	27	25	24
5DRL120-20-1	18.5	300	500/10		41	40	39.5	38.5	37	36.5	34.5	32.5	30	27.5
5DRL120-20	22	300	500/10		46	45	44.5	43.5	42.4	41	40	38	36	33.5
5DRL120-30-2	30	300	500/10		57	56	55	53.5	52	51	49	46.5	43.5	41
5DRL120-30-1	30	300	500/10		64	63	62	60	58.5	57.5	55.5	52	49	46
5DRL120-30	30	300	500/10		69.5	68.5	67.5	66	64.4	62.5	61	57.5	54.5	51
5DRL120-40-2	37	300	500/10		80.5	79	78	76	73.5	72	69	66	61.5	58
5DRL120-40-1	37	300	500/10		87	86	84.5	82	80	78	76	72	68	64.5
5DRL120-40	45	300	500/10		92.5	91	90	88	85.5	83	81	77	73	68.5
5DRL120-50-2	45	300	500/16		104.5	103	101	99	96	93	90	85.5	80.5	75.5
5DRL120-50-1	45	300	500/16		110.5	109	107.5	105	102	100	97	92	86.5	83
5DRL120-50	55	300	500/16		115.5	114	113	110	107.5	104.5	101.5	96	91	86
5DRL120-60-2	55	300	500/16		128	125.5	123	121	117.3	113.5	110	104.5	98.5	92.5
5DRL120-60-1	55	300	500/16		134	132	130.5	127	124	121	118	111	105	100
5DRL120-60	75	300	500/16		139	137	135	132	128.8	126	123	116	110	104
5DRL120-70-2	75	300	500/16		151	148	145.5	143	138.6	134	130	123.5	116.5	109
5DRL120-70-1	75	300	500/25		156.5	154	152	148.5	144.5	141	137.5	130	123	116.5
5DRL120-70	75	300	500/25		162.5	160.5	158.5	155	151	148	145	137	129	123

Model	Single pump power (kW)	Inlet/outlet pipe DN	Pressure tank (L)	Flow (m <sup>3</sup> /h)	400	450	500	550	600	650	700	750	800	850	900
5DRL150-20-2	18.5	300	500/10	Head (m)	37	35.5	34	33	32	31	29	27.5	26	23	21
5DRL150-20-1	22	300	500/10		44.3	43	42	40	39	38.5	37.5	35	33	30	27
5DRL150-20	30	300	500/10		50	49	48	47	45.5	44	42	40	37	34	32
5DRL150-30-2	30	300	500/10		63.5	61	59	57.5	56	54.5	53	49	45.5	42	39
5DRL150-30-1	37	300	500/10		70	68	67	65	63	62	60	56	53	49	45

MODEL SELECTION «

Model	Single pump power (kW)	Inlet/outlet pipe DN	Pressure tank (L)	Flow (m <sup>3</sup> /h)	400	450	500	550	600	650	700	750	800	850	900
5DRL150-30	37	300	500/10	Head (m)	78	76.5	75	73	70.5	68	66	63	59	55	50.5
5DRL150-40-2	45	300	500/10		89	87	84	81.5	79	77	74.5	70.5	65.5	60	56
5DRL150-40-1	45	300	500/10		96.5	94	91.5	89	86.5	84	81.5	77	72.5	67	62
5DRL150-40	55	300	500/16		104	102	100	97	95	91	88	84	79.5	74	68
5DRL150-50-2	55	300	500/16		115.5	112	109	106	102.5	100	97	92	86	79	73.5
5DRL150-50-1	75	300	500/16		122.5	119.5	117	113.5	111.5	107.5	104.5	99	93.5	87	80
5DRL150-50	75	300	500/16		130	127.5	125	121	119	115	111.5	106.5	101	94.5	86.5
5DRL150-60-2	75	300	500/16		140	137	133	130	126	121	118	112	106	98	91
5DRL150-60-1	75	300	500/16		148.5	145	141.7	137.5	135	131	127	120.5	114.5	106.5	97.5
5DRL150-60	75	300	500/16		157	153	149	145	142	138.5	137	130	123.5	116	109

Model	Single pump power (kW)	Inlet/outlet pipe DN	Pressure tank (L)	Flow (m <sup>3</sup> /h)	500	600	700	800	900	1000	1100	1200
5DRL200-10-B	18.5	350	500/10	Head (m)	25.5	25	24	23	21.5	20	18	15.5
5DRL200-10-A	22	350	500/10		29	28.5	27.5	26.5	25.5	24	22	20
5DRL200-10	30	350	500/10		38.5	38	37.5	36.5	35	34	32.5	30
5DRL200-20-2B	37	350	500/10		53	51	49	47	44	41	37	32
5DRL200-20-2A	45	350	500/10		59.5	58	56	54	52.5	49	44.5	40.5
5DRL200-20-A	55	350	500/10		69	68	66	64	62	59	55.5	51
5DRL200-20	55	350	500/10		78.5	77.5	76	74	71.5	69	66	61.5
5DRL200-30-2B	75	350	500/10		91.5	89	86.5	83.5	79	75	70	63
5DRL200-30-A-B	75	350	500/10		95	93	90	87	83.5	79	73.5	67
5DRL200-30-2A	75	350	500/10		99.5	97.5	94.5	91.5	89	84	78.5	72
5DRL200-30-B	75	350	500/16		104.5	102.5	100	97	93	89	84.5	72.5
5DRL200-30-A	75	350	500/16		108	106	103.5	100.5	97.5	93	88	81.5
5DRL200-30	90	350	500/16		117.5	116	113.5	110.5	107	103	99	92
5DRL200-40-2B	90	350	500/16		131.5	129	125.5	121	115.5	110	103.5	94
5DRL200-40-2A	110	350	500/16		138.5	136	132	128	124	118	111	102.5
5DRL200-40-A	110	350	500/16		148	145.5	142.5	138	134	128	122	113
5DRL200-40	110	350	500/16		157.5	155.5	152.5	148	143.5	138	132.2	123.5

# ENTERPRISE HONOR



ISO90001 Quality Management System



ISO14001 Environmental Management System



OHSAS18001 Occupational Health and Safety Management System



Energy-saving certificate of Pipe Network Lamination (No Negative Pressure) Frequency Conversion Water Supply Equipment



National Torch Key High-tech Enterprise Certificate



Energy-saving certificate of Constant Pressure Frequency Conversion Water Supply Equipment



Water-saving certificate of Constant Pressure Frequency Conversion Water Supply Equipment



Good Standardized Behavior Certificate



Health certificate



National High-tech Enterprise Certificate



Software copyright of Intelligent Constant Pressure (No Negative Pressure)



Construction industry promotion certificate



CCC certificate of AC low voltage distribution cabinet



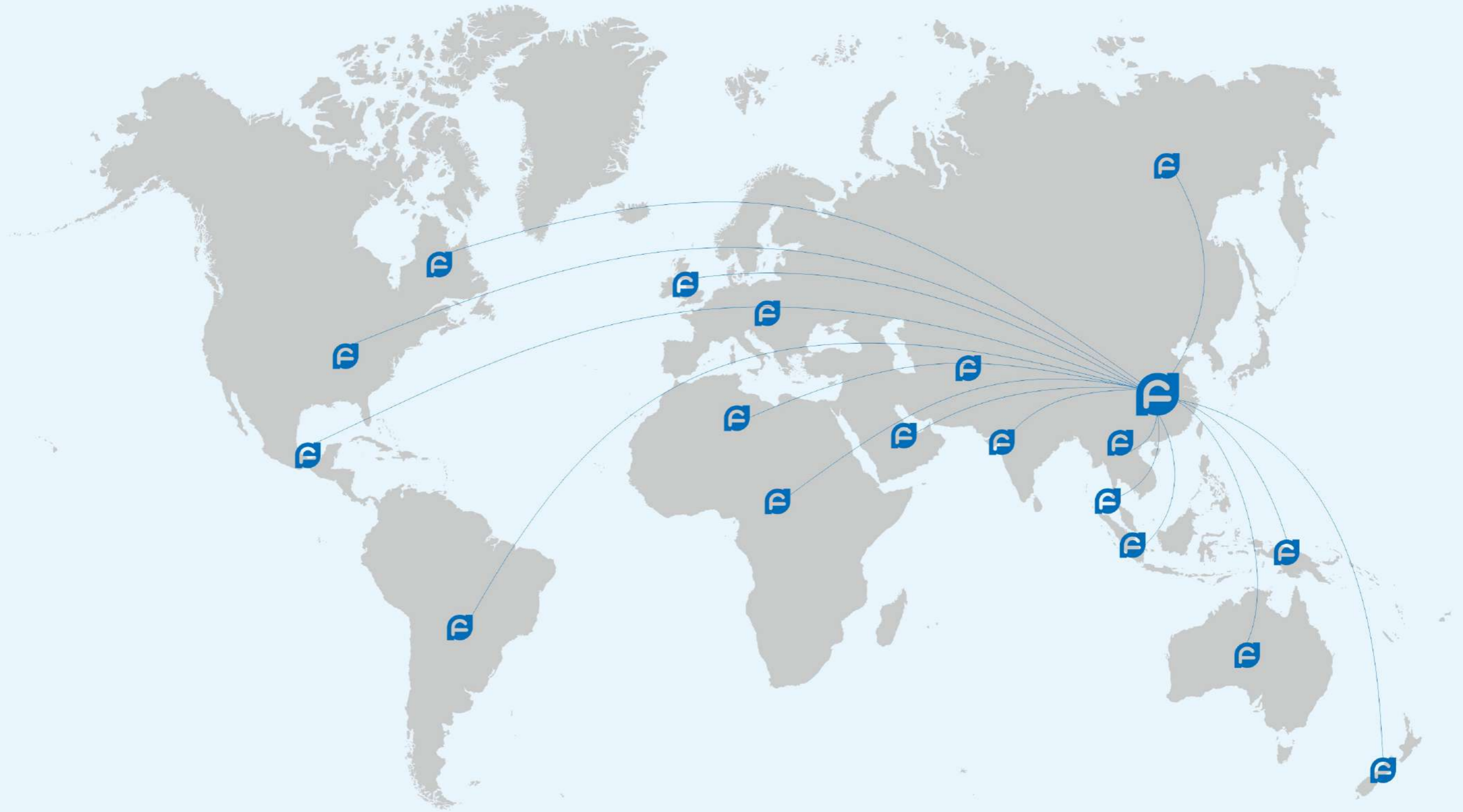
CCC certificate of Fire-Fighting Water Supply Equipment



Vice President Unit of Water Supply and Drainage Industry Equipment Council



» GLOBAL SALES AND SERVICE NETWORK



 **Committed to the construction of sponge city**   
 **Leading the development of smart water**