

GLOBE VALVE GV32B

DESCRIPTION

The GV32B bronze in-line stop valves are designed for use with steam, water, oil or air applications.

MAIN FEATURES

Rising stem.
PTFE renewable disk.
High quality PTFE packing.

USE: Saturated steam, condensate, water, oil, compressed air and other fluids compatible with the construction

AVAILABLE MODELS: GV32B – bronze.

SIZES: 1/2" to 2".

CONNECTIONS: Female threaded ISO 7 Rp.

INSTALLATION: See IMI – Installation and maintenance instructions.



CE MARKING – GROUP 2 (PED – European Directive)	
PN 32	Category
1/2" to 11/4"	SEP
11/2" to 2"	1 (CE marked)

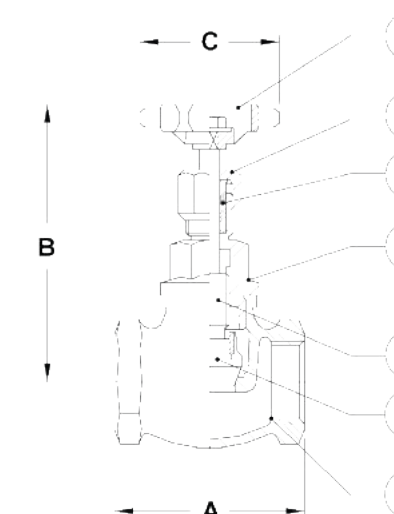
BODY LIMITING CONDITIONS	
PN 32	
ALLOWABLE PRESSURE	RELATED TEMPERATURE
32 bar	100 °C
14 bar	198 °C

DIMENSIONS (mm)				
SIZE	A	B	C	WEIGHT (kg)
1/2"	57	95	75	0,39
3/4"	65	98	75	0,55
1"	78	114	85	0,85
11/4"	89	138	95	1,36
11/2"	100	159	105	1,76
2"	121	170	120	2,62

FLOW RATE COEFFICIENTS (m³/h)						
SIZE	1/2"	3/4"	1"	11/4"	11/2"	2"
Kvs	2	5	10	16	23	42

For conversion: Kvs = Cv (US) x 0,855.

MATERIALS		
POS. Nº	DESIGNATION	MATERIAL
1	Body	Bronze
2	Bonnet	Forged brass
3	Stem	Brass
4	Disc	Glass filled PTFE
5	Disc nut	Brass
6	Packing	PTFE
7	Handwheel	Aluminium



BELLOWS SEALED STOP VALVES VF20

DESCRIPTION

The VF20 is a series of maintenance free inline stop valves designed with double wall bellow sealing, secondary safety packing and non-rising handwheel. They are specially recommended for steam, gas, liquid, condensate, thermal oil and water applications.

MAIN FEATURES

Maintenance free design.
High durability sealing via double wall bellows.
Secondary safety packing.
Non-rising handwheel.
External stem thread.

OPTIONS: Parabolic plug for throttling applications.
PTFE soft sealing for applications up to 180 °C.

USE: Group 2 fluids compatible with the construction.

AVAILABLE MODELS: VF20 – cast iron.

SIZES: DN 15 to DN 200.

CONNECTIONS: Flanged EN 1092-2 PN 16.

INSTALLATION: See IMI – Installation and maintenance instructions.

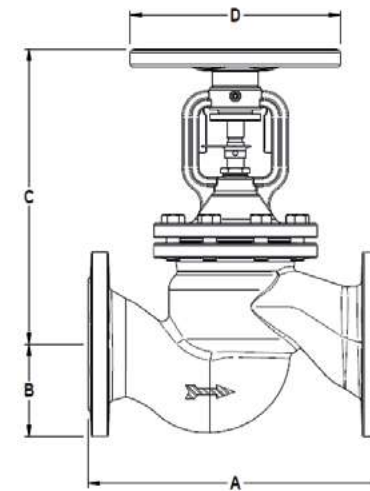


CE MARKING – GROUP 2 (PED – European Directive)

PN 16	Category
DN 15 to 50	SEP
DN 65 to 200	1 (CE marked)

FLOW RATE COEFFICIENTS (m³/h)												
SIZE	DN 15	DN 20	DN 25	DN 32	DN 40	DN 50	DN 65	DN 80	DN 100	DN 125	DN 150	DN 200
Kvs	5,9	7,4	13	18	30	41	79	115	181	225	364	725

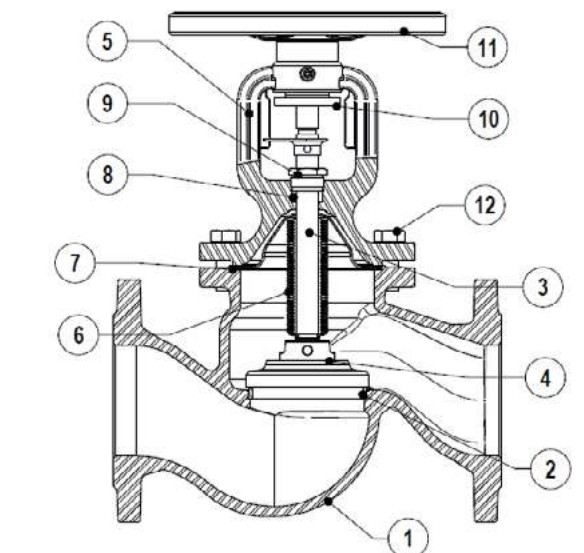
BODY LIMITING CONDITIONS	
ALLOWABLE PRESSURE	RELATED TEMPERATURE
16 bar	- 10 °C / 120 °C
12,8 bar	200 °C
11,2 bar	250 °C
9,6 bar	300 °C



DIMENSIONS (mm)					
SIZE	A	B	C	D	WEIGHT (kg)
DN 15	130	47,5	178	125	3,2
DN 20	150	52,5	178	125	3,9
DN 25	160	57,5	193	125	4,6
DN 32	180	70	201	125	6,5
DN 40	200	75	224	150	9
DN 50	230	82,5	228	150	11
DN 65	290	92,5	270	175	15,8
DN 80	310	100	295	200	20,5
DN 100	350	110	352	250	35
DN 125	400	125	380	300	49
DN 150	480	142,5	427	400	76
DN 200	600	170	569	500	130,5

MATERIALS		
POS. N°	DESIGNATION	MATERIAL
1	Body	EN-GJL-250
2	Seat	Stainless steel
3	* Spindle	Stainless steel
4	* Disc	Stainless steel
5	Bonnet	EN-GJS-400-18-LT
6	* Bellows	Stainless steel
7	* Gasket	Stainless steel / Graphite
8	* Packing	Carbo-graphite
9	Gland	Zinc plated steel
10	Anti-friction disc	Zinc plated steel
11	Handwheel	Steel
12	Bolts	Steel 8.8

* Available spare parts.



**BELLOWS SEALED STOP VALVES
VF40**

DESCRIPTION

The VF40 is a series of maintenance free inline stop valves designed with double wall bellow sealing, secondary safety packing and non-rising handwheel. They are specially recommended for steam, gas, liquid, condensate, thermal oil and water applications.

MAIN FEATURES

- Maintenance free design.
- High durability sealing via double wall bellows.
- Secondary safety packing.
- Non-rising handwheel.
- External stem thread.

OPTIONS: Parabolic plug for throttling applications.

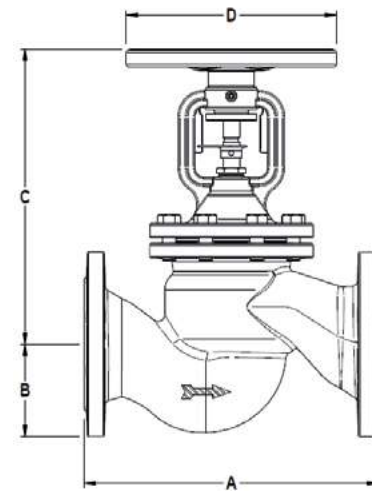
USE: Group 2 fluids compatible with the construction.

AVAILABLE MODELS:
VF40S – carbon steel.
VF40I – stainless steel.

SIZES: DN 15 to DN 150.

CONNECTIONS: Flanged EN 1092-1 PN 40.

INSTALLATION: See IMI – Installation and maintenance instructions.



DIMENSIONS (mm)					
SIZE	A	B	C	D	WEIGHT (kg)
DN 15	130	47,5	189	120	4,3
DN 20	150	52,5	189	120	5,1
DN 25	160	57,5	189	120	5,8
DN 32	180	70	220	160	9,5
DN 40	200	75	220	160	9,8
DN 50	230	82,5	295	195	17,5
DN 65	290	92,5	295	195	20,5
DN 80	310	100	368	280	34
DN 100	350	117,5	368	280	44
DN 125	400	135	523	350	77
DN 150	480	150	523	350	110

CE MARKING – GROUP 2 (PED – European Directive)	
PN 40	Category
DN 15 to 32	SEP
DN 40 to 100	1 (CE marked)
DN 125 to 150	2 (CE marked)

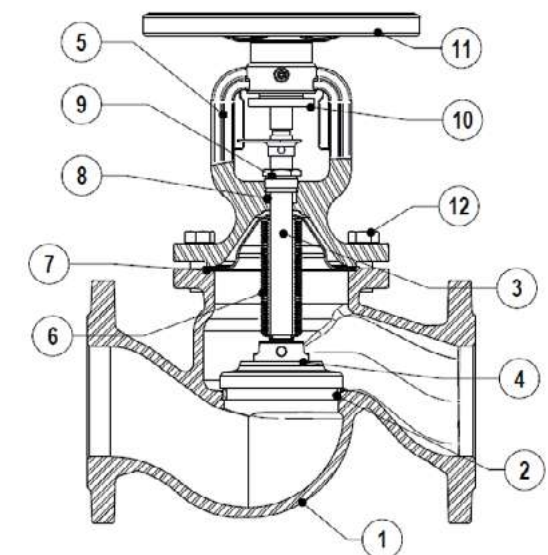
BODY LIMITING CONDITIONS		
VF40S ALLOWABLE PRESSURE	VF40I ALLOWABLE PRESSURE	RELATED TEMPERATURE
40 bar	40 bar	- 10 °C / 50 °C
37,4 bar	40 bar	100 °C
33,6 bar	35,8 bar	200 °C
27,8 bar	32,5 bar	300 °C

Remark: lower temperature limits on request.

FLOW RATE COEFFICIENTS (m³/h)											
SIZE	DN 15	DN 20	DN 25	DN 32	DN 40	DN 50	DN 65	DN 80	DN 100	DN 125	DN 150
Kvs	4,3	7	11	17,5	27	47	68	116	162	250	364

MATERIALS		
POS. N°	DESIGNATION	MATERIAL
1	Body (VF40S)	GP240GH / 1.0619
	Body (VF40I)	A351 CF10MC / 1.4581
2	Seat	Stainless steel
3	* Spindle	Stainless steel
4	* Disc	Stainless steel
5	Bonnet	GP240GH / 1.0619
6	* Bellows	Stainless steel
7	* Gasket	Stainless steel / Graphite
8	* Packing	Graphite
9	Gland	Zinc plated steel
10	Anti-friction disc	Zinc plated steel
11	Handwheel	Cast iron
12	Bolts	Stainless steel A2-70

* Available spare parts.



**THREE PIECE BALL VALVES
M3S1**

DESCRIPTION

The M3S1 three piece ball valves are full bore isolating valves designed for on/off applications with steam, condensate and other gases and liquids compatible with the construction.

MAIN FEATURES

- Full bore floating ball design.
- Can be serviced without removal from pipeline.
- Bidirectional.
- Blow-out proof stem design.
- Antistatic device.



OPTIONS: Different sealing materials.
Fire safe design.

USE: Steam, gases and liquids compatible with the construction.

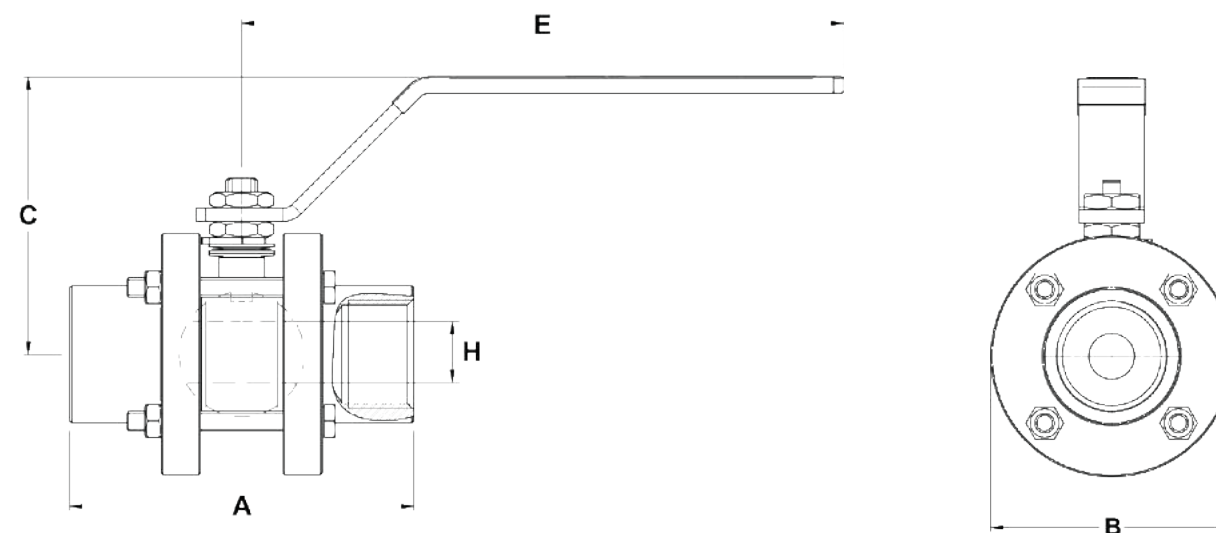
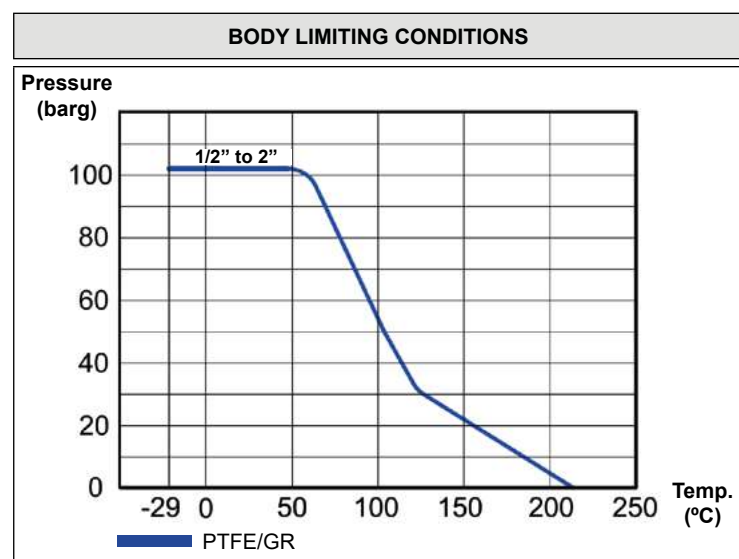
AVAILABLE MODELS: M3S1 – zinc plated carbon steel.

SIZES: 1/2" to 2".

CONNECTIONS: Female threaded ISO 7 Rp or NPT.
Socket weld (SW) ASME B16.11.
Butt weld (BW) ASME B16.25.

INSTALLATION: See IMI – Installation and maintenance instructions.

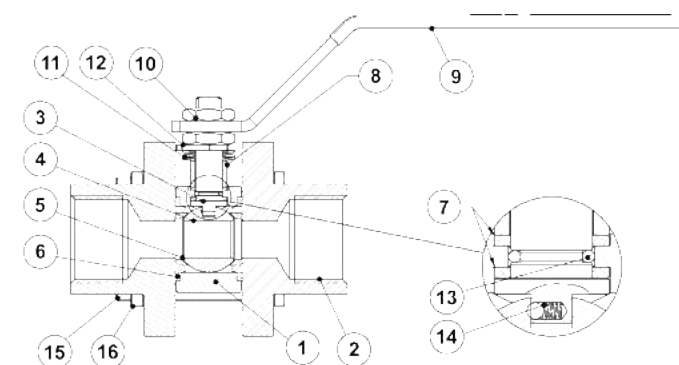
CE MARKING – GROUP 2 (PED – European Directive)	
PN 100	Category
1/2" to 1 1/4"	SEP
1 1/2" to 2"	1 (CE marked)



DIMENSIONS (mm)						
SIZE	A	B	C	E	H	WEIGHT (kg)
1/2"	80	60	75	145	14	0,7
3/4"	95	80	85	185	20	1,4
1"	105	90	85	185	25	2,2
1 1/4"	120	110	100	270	32	3,3
1 1/2"	130	120	110	270	38	4,3
2"	145	130	115	270	48	7,3

MATERIALS		
POS. Nº	DESIGNATION	MATERIAL
1	Body	A105 / 1.0432
2	Body cap	A105 / 1.0432
3	Stem	AISI 316 / 1.4401
4	Ball	AISI 304 / 1.4301
5	* Seat	PTFE/GR
6	* Body gasket	PTFE/GR
7	* Stem gasket	PTFE/GR
8	Gland	AISI 304 / 1.4301
9	Lever	Zinc plated steel
10	Gland nut	Zinc plated steel
11	Washer springs	Spring steel
12	Stop plate	Zinc plated steel
13	Stem o-ring	Viton
14	Anti-static device	AISI 304 / 1.4301
15	Bolts	Zinc plated steel
16	Nuts	Zinc plated steel

* Available spare parts



THREE PIECE BALL VALVES M3i5

DESCRIPTION

The M3i5 three piece ball valves are reduced bore isolating valves designed for on/off applications with steam, condensate and other gases and liquids compatible with the construction.

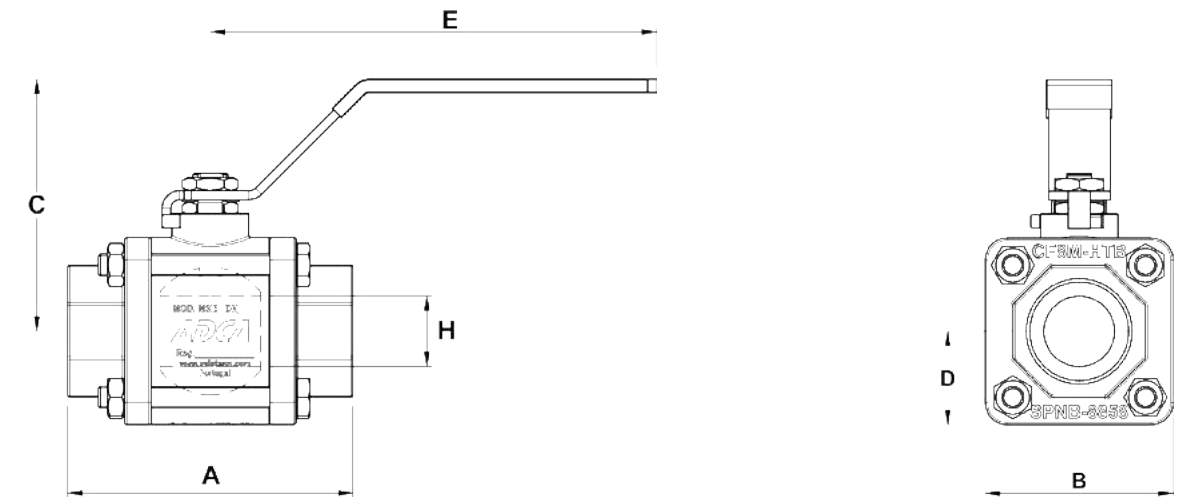
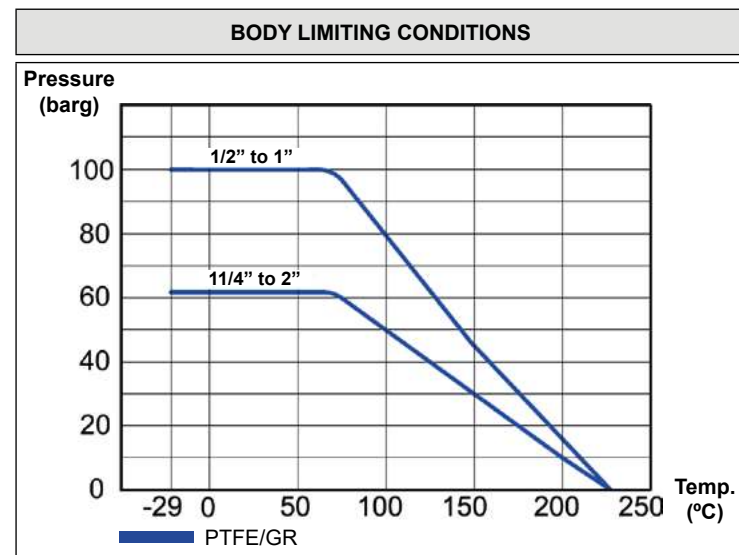
MAIN FEATURES

- Reduced bore floating ball design.
- Can be serviced without removal from pipeline.
- Bidirectional.
- Blow-out proof stem design.
- Antistatic device.



- OPTIONS:** Different sealing materials.
- USE:** Steam, gases and liquids compatible with the construction.
- AVAILABLE MODELS:** M3i5 – stainless steel.
- SIZES:** 1/2" to 2".
- CONNECTIONS:** Female threaded ISO 7 Rp or NPT.
Socket weld (SW) ASME B16.11.
- INSTALLATION:** See IMI – Installation and maintenance instructions.

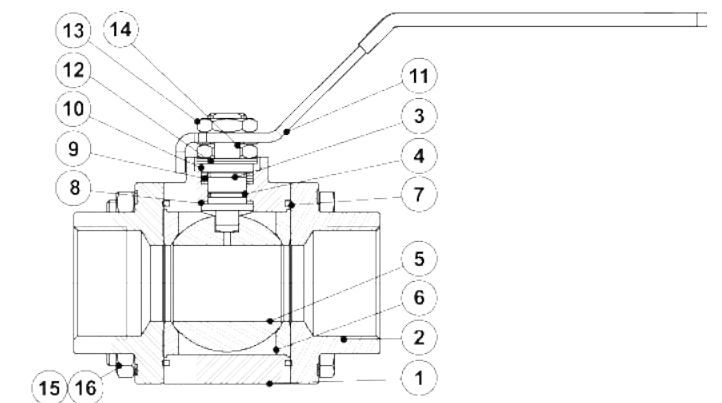
CE MARKING – GROUP 2 (PED – European Directive)	
PN 100	Category
1/2" to 1 1/4"	SEP
1 1/2" to 2"	1 (CE marked)



DIMENSIONS (mm)							
SIZE	A	B	C	D	E	H	WEIGHT (kg)
1/2"	68	42	74	21	143	11	0,61
3/4"	76	50	74	25	143	15	0,87
1"	100	62	86	31	175	20	1,81
1 1/4"	118	72	91	36	175	25	2,54
1 1/2"	130	85	115	42,5	203	32	3,95
2"	146	95	119	47,5	203	38	5,05

MATERIALS		
POS. N°	DESIGNATION	MATERIAL
1	Body	A351 CF8 / 1.4308
2	Body cap	A351 CF8M / 1.4408
3	Stem	AISI 316 / 1.4401
4	Stem o-ring	Viton
5	Ball	AISI 316 / 1.4404
6	* Seat	PTFE/GR
7	* Body gasket	PTFE
8	* Stem gasket	PTFE/GR
9	* Stem seal	PTFE/GR
10	Spacer	AISI 316 / 1.4404
11	Handle	AISI 304 / 1.4301
12	* Spring washers	AISI 304 / 1.4301
13	Compression nut	AISI 304 / 1.4301
14	* Lockwasher	AISI 304 / 1.4301
15	Fixing bolts	AISI 304 / 1.4301
16	Nuts	AISI 304 / 1.4301

* Available spare parts



**THREE PIECE BALL VALVES
M3i1**

DESCRIPTION

The M3i1 three piece ball valves are full bore isolating valves designed for on/off applications with steam, condensate and other gases and liquids compatible with the construction.

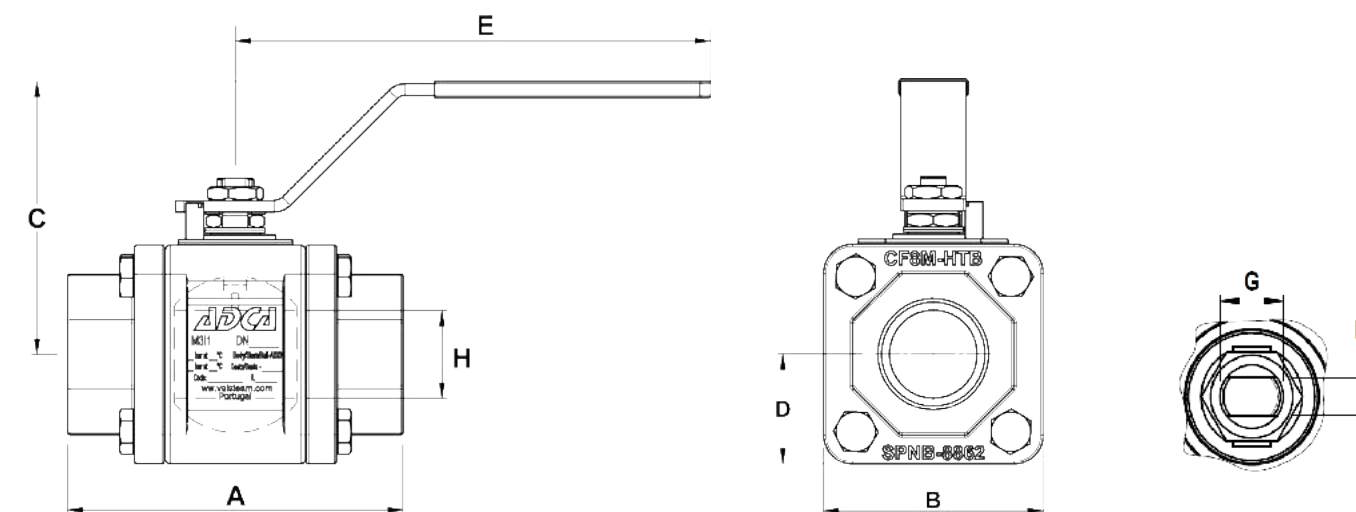
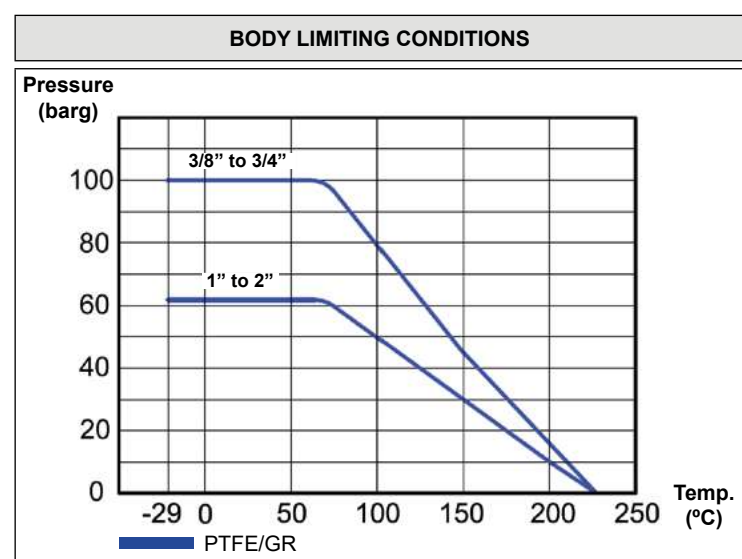
MAIN FEATURES

- Full bore floating ball design.
- Can be serviced without removal from pipeline.
- Bidirectional.
- Blow-out proof stem design.
- Antistatic device.
- ISO 5211 mounting.



- OPTIONS:** Different sealing materials.
- USE:** Steam, gases and liquids compatible with the construction.
- AVAILABLE MODELS:** M3i1 – stainless steel.
- SIZES:** 3/8" to 2".
- CONNECTIONS:** Female threaded ISO 7 Rp or NPT.
Socket weld (SW) ASME B16.11.
- INSTALLATION:** See IMI – Installation and maintenance instructions.

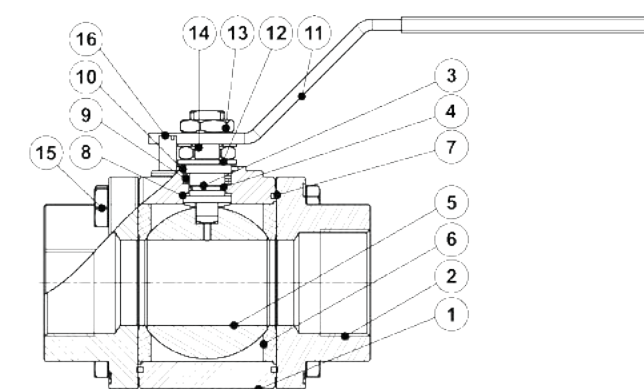
CE MARKING – GROUP 2 (PED – European Directive)	
PN 100	Category
3/8" to 1 1/4"	SEP
1 1/2" to 2"	1 (CE marked)



DIMENSIONS (mm)										
SIZE	A	B	C	D	E	F	G	H	ISO 5211	WEIGHT (kg)
3/8"	68	42	65	21	149	6	M10 x 1	11	F03	0,73
1/2"	76	50	69	25	149	6	M10 x 1	15	F03	1,1
3/4"	100	62	87	31	176	7,5	M12 x 1,25	20	F04	2,18
1"	118	72	92	36	176	7,5	M12 x 1,25	25	F04	3,12
1 1/4"	130	85	114	42,5	207	11	M16 x 1,5	32	F05	4,66
1 1/2"	146	95	119	47,5	207	11	M16 x 1,5	38	F05	6,35
2"	154	105	124	52,5	232	11	M16 x 1,5	50	F05	7,1

MATERIALS		
POS. Nº	DESIGNATION	MATERIAL
1	Body	A35 CF3M / 1.4409
2	Body cap	A351 CF8M / 1.4408
3	Stem	AISI 316 / 1.4401
4	Stem o-ring	Viton
5	Ball	AISI 316 / 1.4401
6	* Seat	PTFE/GR
7	* Body gasket	PTFE
8	* Stem gasket	PTFE/GR
9	* Stem seal	PTFE/GR
10	Spacer	AISI 316 / 1.4401
11	Handle	AISI 304 / 1.4301
12	* Spring washers	AISI 304 / 1.4301
13	Compression nut	AISI 304 / 1.4301
14	* Lock washer	AISI 304 / 1.4301
15	Fixing bolts	AISI 304 / 1.4301
16	Nuts	AISI 304 / 1.4301

* Available spare parts



**WAFER BALL VALVES
MWS1 and MWi1**

DESCRIPTION

The MWS1 and MWi1 series wafer ball valves are compact isolating valves designed for on/off applications with steam, condensate and other gases and liquids compatible with the construction.

MAIN FEATURES

- Compact and lightweight flangeless design.
- Easily installed and repaired.
- Full bore floating ball design.
- Bidirectional.
- Blow-out proof stem design.
- Antistatic device.
- ISO 5211 mounting.

OPTIONS: Different sealing materials.
Stem extensions.

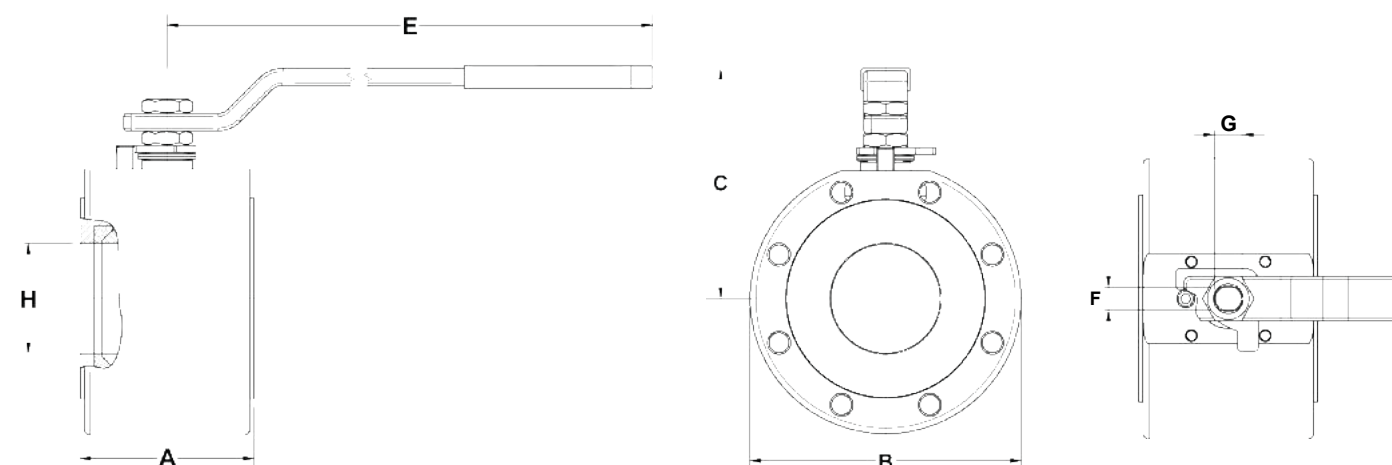
USE: Steam, gases and liquids compatible with the construction.

AVAILABLE MODELS: MWS1 – carbon steel.
MWi1 – stainless steel.

SIZES: DN 15 to DN 150.

CONNECTIONS: Flanged EN 1092-1 PN 16.

INSTALLATION: See IMI – Installation and maintenance instructions.

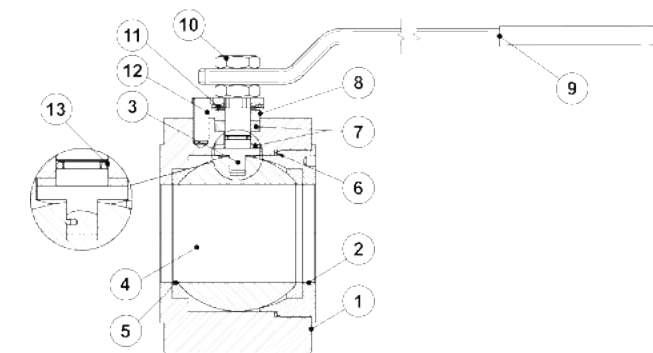


DIMENSIONS (mm)									
SIZE	A	B	C	E	F	G	H	ISO 5211	WEIGHT (kg)
DN 15	35	88	78	150	–	–	14	NA	1,5
DN 20	42	98	87	185	7,5	M12	19	F04	2
DN 25	46	108	91	185	7,5	M12	25	F04	2,7
DN 32	55	128	106	280	9	M14	32	F05	3,8
DN 40	66	138	111	280	9	M14	38	F05	6,5
DN 50	72	148	120	280	9	M14	48	F05	8
DN 65	98	168	157	380	14	M22	65	F07	15
DN 80	120	188	161	380	14	M22	76	F07	20
DN 100	140	220	181	480	18	M30	95	F07	30
DN 125	177	250	205	480	18	M30	119	F10	47
DN 150	210	280	220	480	18	M30	145	F10	69

NA – Not available.

MATERIALS			
POS. N°	DESIGNATION	MWS1	MWi1
1	Body	A105 / 1.0432	AISI 316 / 1.4401
2	Body cap	A105 / 1.0432	AISI 316 / 1.4401
3	Stem	AISI 316 / 1.4401	AISI 316 / 1.4401
4	Ball	AISI 304 / 1.4301	AISI 316 / 1.4401
5	* Seat	PTFE/GR	PTFE/GR
6	* Body gasket	PTFE/GR	PTFE/GR
7	* Stem gasket	PTFE/GR	PTFE/GR
8	Gland	AISI 304 / 1.4301	AISI 316 / 1.4401
9	Lever	Zinc plated steel	Zinc plated steel
10	Gland nut	Zinc plated steel	Zinc plated steel
11	Washer springs	Spring steel	Spring steel
12	Stop pin	Zinc plated steel	Zinc plated steel
13	Stem o-ring	Viton	Viton

* Available spare parts



BODY LIMITING CONDITIONS		
MWS1 ALLOWABLE PRESSURE	MWi1 ALLOWABLE PRESSURE	RELATED TEMPERATURE
16 bar	16 bar	-10 / 60 °C
14,8 bar	15 bar	100 °C
14 bar	13,7 bar	150 °C
7 bar	7 bar	220 °C

CE MARKING – GROUP 2 (PED – European Directive)	
PN 16	Category
DN 15 to DN 50	SEP
DN 65 to DN 150	1 (CE marked)

SPRING RETURN HANDLE SRH

DESCRIPTION

The SRH consists in a spring box which, when assembled, switches the ball valve to a safe position (closed or open), as soon as the operator releases its handle.

MAIN FEATURES

Clockwise spring action.
Lockable as standard.
Weatherproof sealed spring housing.
Sealed to IP 65.

OPTIONS: Counter clockwise spring action.
Padlock.

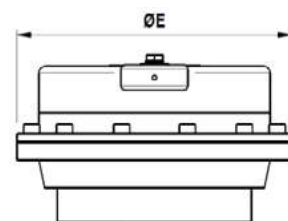
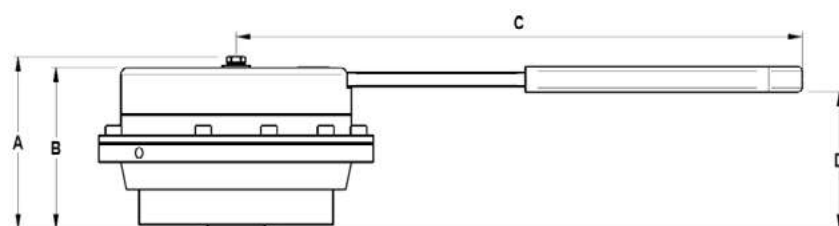
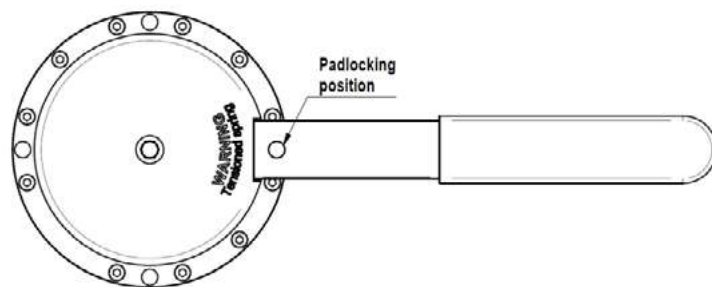
USE: Failsafe operation for quarter turn manual valves.

AVAILABLE MODELS: SRH1 – Stainless steel AISI 304.

CONNECTIONS: ISO standard drive and mountings.



“Dead-man” lever ball valve.



DIMENSIONS (mm)

MODEL	A	B	C	D	E	WGT. (kg)
SRH1/24	74	69	248	57	119	2,5
SRH1/40	74	69	248	57	119	2,5

SPRING RETURN HANDLES TORQUES

MODEL	MOUNT. TYPES	TORQUE (Nm)
SRH1/24	F03 ; F05 ; F07	24
SRH1/40	F03 ; F05 ; F07	40

STAINLESS STEEL NEEDLE VALVES NV400

DESCRIPTION

The NV400 is a series of high pressure needle valves designed for shut-off applications with steam and other industrial fluids. The NV400B is a special version designed for use as a boiler water sample valve when connected to the bottom sample connection on a VPC TDS blowdown control valve.

MAIN FEATURES

Complete stainless steel construction.
High quality graphite packing.

OPTIONS: Version for oxygen service.

USE: Saturated steam, water, compressed air and other fluids compatible with the construction.

AVAILABLE MODELS: NV400H; NV400B.

SIZES: 1/4" to 1/2".

CONNECTIONS: NV400H – Female threaded ISO 228.
NV400B – Inlet: Female threaded ISO 228.
Outlet: Comp. fitting 8S (M16 x 1,5).

INSTALLATION: In any position.

Remarks: Other sizes, materials and connections available on request.

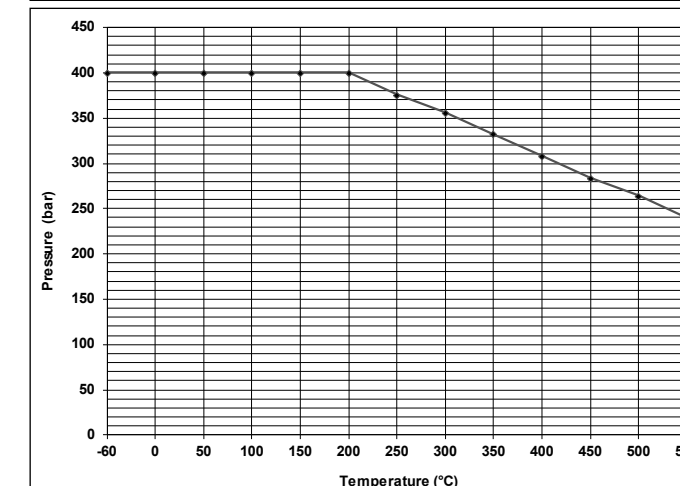


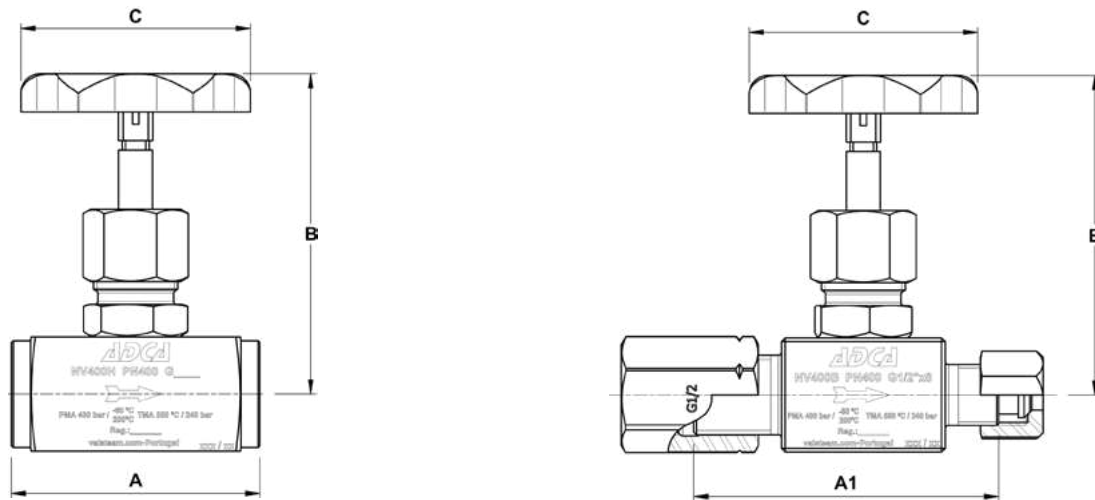
NV400H



NV400B

BODY LIMITING CONDITIONS





DIMENSIONS (mm) – NV400H					
SIZE	A	B	C	ORIFICE	WEIGHT (kg)
1/4"	55	82	70	6	0,48
3/8"	60	82	70	6	0,49
1/2"	65	82	70	6	0,49

DIMENSIONS (mm) – NV400B					
SIZE	A1	B	C	ORIFICE	WEIGHT (kg)
1/2"	80	82	70	6	0,63

FLOW RATE COEFFICIENTS (m³/h)			
	SIZES		
	1/4"	3/4"	1/2"
Kvs	0,56		

For conversion Kvs = Cv (US) x 0,855.

MATERIALS		
POS.	DESIGNATION	MATERIAL
1	Body	AISI 316 Ti / 1.4571
2	Bonnet	AISI 316 Ti / 1.4571
3	Stem	AISI 316 Ti / 1.4571
4	Packing nut	AISI 316 Ti / 1.4571
5	Packing gland	AISI 316 Ti / 1.4571
6	Packing	Graphite
7	Handwheel	Metallic
8	Compression fitting	AISI 316 Ti / 1.4571
9	Alignment union	AISI 316 Ti / 1.4571

