

SIGHT CHECKERS SCKi

DESCRIPTION

The SCKi sight checkers function as both sight glasses and check valves.

Such devices are designed for installation downstream of steam traps, to monitor their performance, while also working as reliable check valves to prevent condensate backflow.

USE: Condensate lines, downstream of steam traps.

AVAILABLE MODELS: SCKi – stainless steel.

SIZES: 1/2" to 1".

CONNECTIONS: Female threaded ISO 7 Rp or NPT.

INSTALLATION: Horizontal or vertical (bottom to top) installation. See IMI – Installation and maintenance instructions. The SCKi should be fitted at least 1 meter away from the trap, in order to protect the glass from thermal pressure or shock.

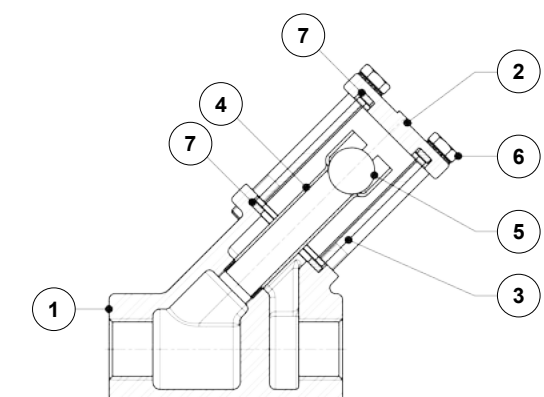
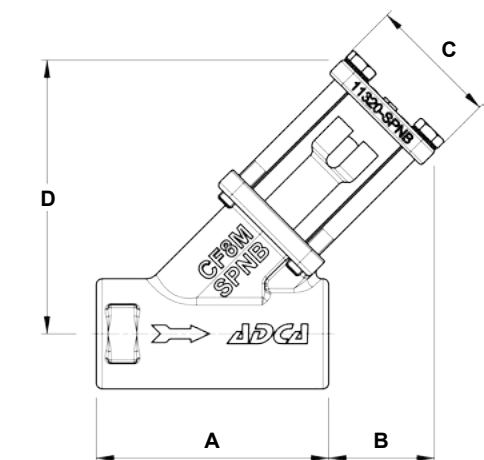


LIMITING CONDITIONS	
PMO – Maximum operating pressure	10 bar
TMO – Maximum operating temperature	150 °C

DIMENSIONS (mm)					
SIZE	A	B	C	D	WEIGHT (kg)
1/2"	80	36	45	95	0,9
3/4"	80	36	45	95	0,9
1"	90	40	56	110	1,3

MATERIALS		
POS. N°	DESIGNATION	MATERIAL
1	Body	A351 CF8M / 1.4408
2	Cover	A351 CF8M / 1.4408
3	* Sight tube	Borosilicate glass
4	Discharge tube	Copper
5	Check ball	Stainless steel
6	Bolts	Stainless steel A2-70
7	* Gasket	Graphite

* Available spare parts.



SINGLE WINDOW SIGHT GLASSES SW12

DESCRIPTION

The SW12 is a series of single window sight glasses specially designed for installation downstream of steam traps, to monitor their performance such as checking for live steam leakage or blockage. Such devices can also be used for monitoring flow conditions in other applications, particularly in pipelines with liquid medium.

MAIN FEATURES

Compact and cost-effective.
Single window design.
Borosilicate glass.

OPTIONS: Mica shield discs for use with steam.

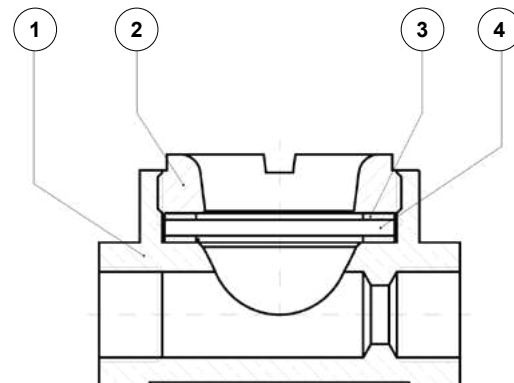
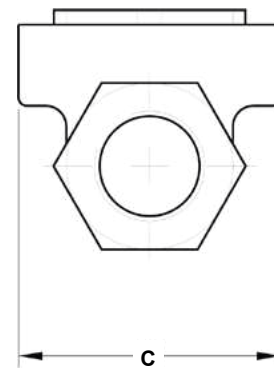
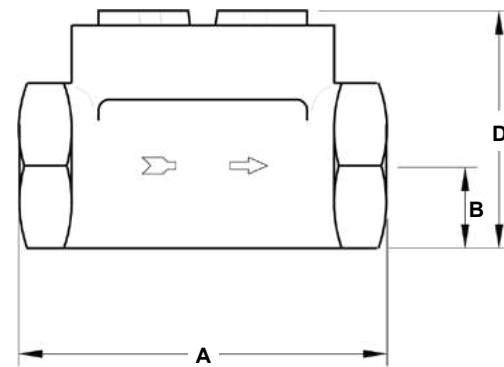
USE: Condensate lines and others.

AVAILABLE MODELS: SW12 – brass.

SIZES: 1/2" to 1".

CONNECTIONS: Female threaded ISO 7 Rp.

INSTALLATION: Horizontal or vertical installation.
See IMI – Installation and maintenance instructions.



LIMITING CONDITIONS	
PMO – Maximum operating pressure	12 bar
TMO – Maximum operating temperature	150 °C

DIMENSIONS (mm)					
SIZE	A	B	C	D	WEIGHT (kg)
1/2"	80	16	62	52	0,6
3/4"	88	19	62	57	0,9
1"	88	23	62	60	0,85

MATERIALS		
POS. N°	DESIGNATION	MATERIAL
1	Body	Brass EN12165 / CuZn39Pb2
2	Glass nut	Brass EN12165 / CuZn39Pb2
3	* Gasket	Stainless steel / Graphite
4	* Window glass	Borosilicate glass

* Available spare parts.

DOUBLE WINDOW SIGHT GLASSES DW40S

DESCRIPTION

The DW40S is a series of double window sight glasses specially designed for installation downstream of steam traps, to monitor their performance such as checking for live steam leakage or blockage. Such devices can also be used for monitoring flow conditions in other applications, particularly in pipelines with liquid medium.

MAIN FEATURES

Compact.
Double window design.
Borosilicate glass.

OPTIONS: Mica shield discs for use with steam.

USE: Condensate lines and others.

AVAILABLE MODELS: DW40S – carbon steel.

SIZES: 1/2" to 2"; DN 15 to DN 50.

CONNECTIONS: Female threaded ISO 7 Rp or NPT.
Flanged EN 1092-1 PN 40.
Flanged ASME B16.5 Class 150 or 300.

INSTALLATION: Horizontal or vertical installation.
See IMI – Installation and maintenance instructions.



1/2" to 1"



1 1/4" to 2"



DN 15 to DN 25

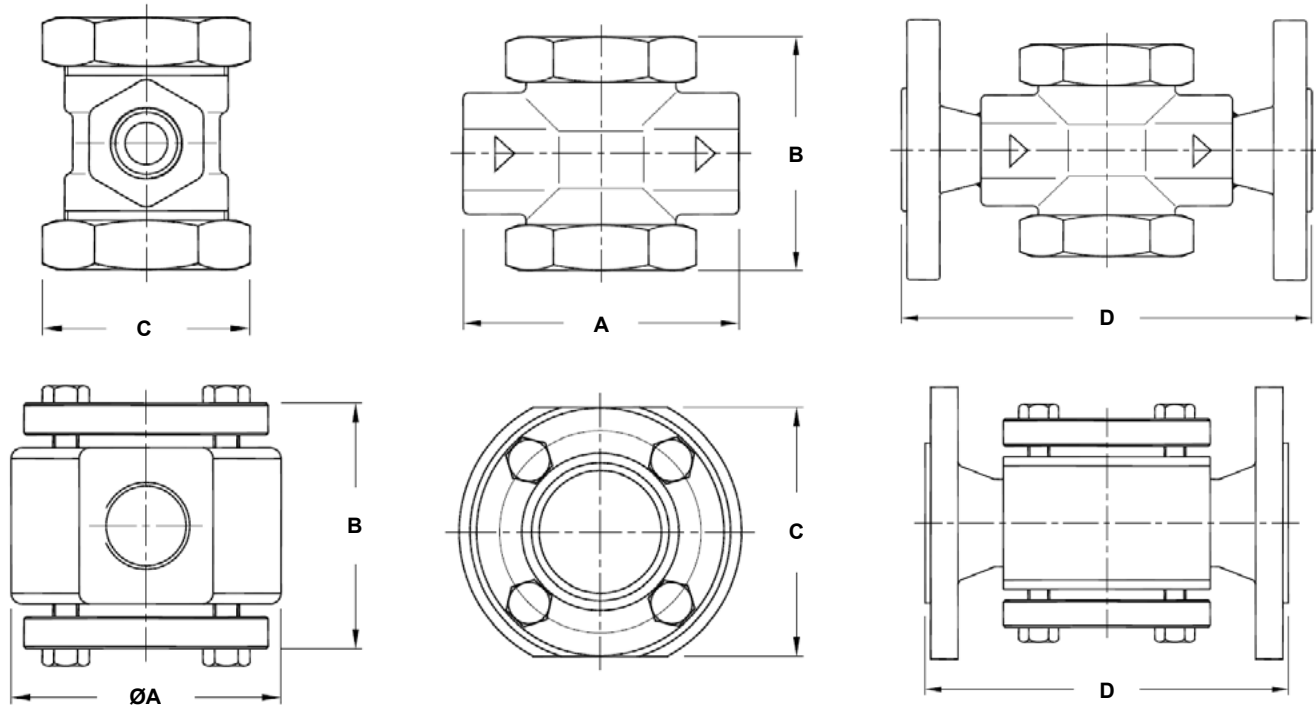


DN 32 to DN 50

CE MARKING – GROUP 2 (PED – European Directive)			
PN 40 / CLASS 300	PN 25	CLASS 150	Category
1/2" to 1" – DN 15 to DN 25	1 1/4" to 1 1/2" – DN 32 to DN 40	1/2" to 2"	SEP
–	2" – DN 50	–	1 (CE Marked)

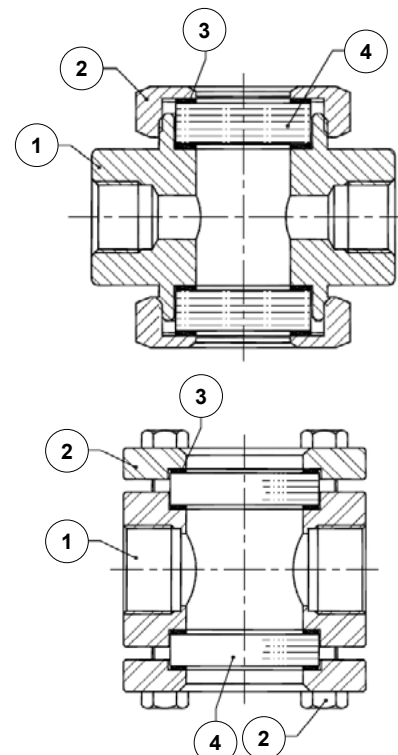
BODY LIMITING CONDITIONS			
PN 40 / CLASS 300 *	PN 25 *	CLASS 150 **	RELATED TEMPERATURE
ALLOWABLE PRESSURE	ALLOWABLE PRESSURE	ALLOWABLE PRESSURE	
40 bar	25 bar	19,3 bar	-10 / 50 °C
37,1 bar	23,2 bar	17,7 bar	100 °C
35,2 bar	22 bar	15,8 bar	150 °C
33,3 bar	20,8 bar	14 bar	200 °C
28,7 bar	17,9 bar	11,7 bar	280 °C

* According to EN 1092-1:2018; ** According to EN 1759-1:2004.
Remarks: For applications with steam, use mica shield discs;
Rating PN 40 for sizes up to DN 25; Rating PN 25 for sizes from DN 32 to DN 50;
Rating PN 40 or lower for threaded versions.



DIMENSIONS (mm)										
SIZE	THREADED				PN 40		CLASS 150		CLASS 300	
	A	B	C	WEIGHT (kg)	D	WEIGHT (kg)	D	WEIGHT (kg)	D	WEIGHT (kg)
1/2" – DN 15	90	80	60	1	150	2,8	150	2,2	150	2,6
3/4" – DN 20	90	80	60	1	150	3,2	150	2,6	150	3,5
1" – DN 25	100	87	65	1,2	160	3,7	160	3,3	160	4,1
1 1/4" – DN 32	130	115	114	7,4	180	11	180	10,2	180	11,3
1 1/2" – DN 40	130	115	114	7,2	200	11,5	200	11	200	12,7
2" – DN 50	130	125	114	7,7	230	13,5	230	13	230	14,3

MATERIALS			
POS. Nº	DESIGNATION	1/2" to 1" DN 15 to 25	1 1/4" to 2" DN 32 to 50
1	Body	P250GH / 1.0460	S355JR / 1.0045 P250GH / 1.0460
2	Glass nut / flange	P250GH / 1.0460	S355JR / 1.0045
3	* Gasket	Stainless steel / Graphite	Stainless steel / Graphite
4	* Window glass	Borosilicate glass	Borosilicate glass
5	Bolts	–	Steel 8.8



* Available spare parts.

**DOUBLE WINDOW SIGHT GLASSES
DW40SS**

DESCRIPTION

The DW40SS is a series of double window sight glasses specially designed for installation downstream of steam traps, to monitor their performance such as checking for live steam leakage or blockage. Such devices can also be used for monitoring flow conditions in other applications, particularly in pipelines with liquid medium.

MAIN FEATURES

Compact.
Corrosion resistant stainless steel body.
Double window design.
Borosilicate glass.

OPTIONS: Mica shield discs for use with steam.

USE: Condensate lines and others.

AVAILABLE MODELS: DW40SS – stainless steel.

SIZES: 1/2" to 2"; DN 15 to DN 50.

CONNECTIONS: Female threaded ISO 7 Rp or NPT.
Flanged EN 1092-1 PN 40.
Flanged ASME B16.5 Class 150 or 300.

INSTALLATION: Horizontal or vertical installation.
See IMI – Installation and maintenance instructions.



1/2" to 1"



1 1/4" to 2"



DN 15 to DN 25



DN 32 to DN 50

CE MARKING – GROUP 2 (PED – European Directive)

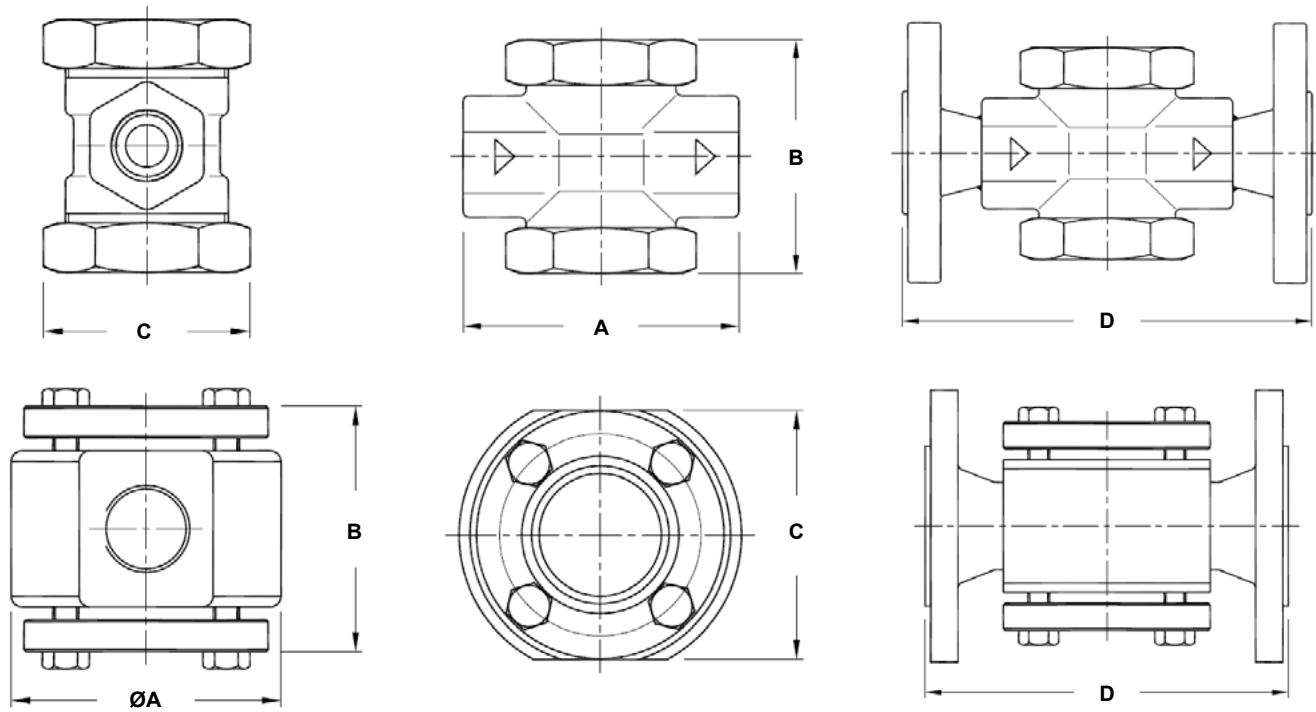
PN 40 / CLASS 300	PN 25	CLASS 150	Category
1/2" to 1" – DN 15 to DN 25	1 1/4" to 1 1/2" – DN 32 to DN 40	1/2" to 2"	SEP
–	2" – DN 50	–	1 (CE Marked)

BODY LIMITING CONDITIONS

FLANGED CLASS 150 **	FLANGED PN 25 *	FLANGED CLASS 300 **	FLANGED PN 40 *	RELATED TEMPERATURE
ALLOWABLE PRESSURE	ALLOWABLE PRESSURE	ALLOWABLE PRESSURE	ALLOWABLE PRESSURE	
15,3 bar	25 bar	39,9 bar	40 bar	-10 / 50 °C
13,3 bar	23,6 bar	34,4 bar	37,9 bar	100 °C
12 bar	21,5 bar	31,3 bar	34,4 bar	150 °C
11,1 bar	19,8 bar	28,8 bar	31,8 bar	200 °C
10,2 bar	18,6 bar	26,6 bar	29,9 bar	250 °C

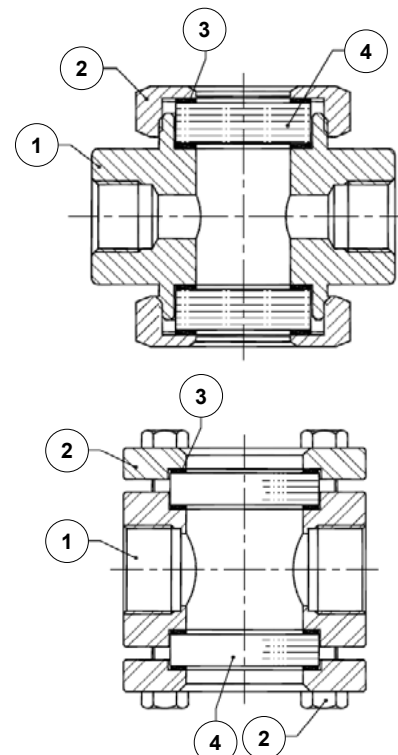
* According to EN 1092-1:2018; ** According to EN 1759-1:2004.

Remarks: For applications with steam, use mica shield discs.
Rating PN 40 for sizes up to DN 25; Rating PN 25 for sizes from DN 32 to DN 50.
Rating PN 40 or lower for threaded versions.



DIMENSIONS (mm)										
SIZE	THREADED				PN 40		CLASS 150		CLASS 300	
	A	B	C	WEIGHT (kg)	D	WEIGHT (kg)	D	WEIGHT (kg)	D	WEIGHT (kg)
1/2" – DN 15	90	80	60	1	150	2,8	150	2,2	150	2,6
3/4" – DN 20	90	80	60	1	150	3,2	150	2,6	150	3,5
1" – DN 25	100	87	65	1,2	160	3,7	160	3,3	160	4,1
1 1/4" – DN 32	130	115	114	7,4	180	11	180	10,2	180	11,3
1 1/2" – DN 40	130	115	114	7,2	200	11,5	200	11	200	12,7
2" – DN 50	130	125	114	7,7	230	13,5	230	13	230	14,3

MATERIALS			
POS. N°	DESIGNATION	1/2" to 1" DN 15 to 25	1 1/4" to 2" DN 32 to 50
1	Body	AISI 316 / 1.4401	AISI 316L / 1.4404
2	Glass nut / flange	AISI 316L / 1.4404	AISI 316L / 1.4404
3	* Gasket	Stainless steel / Graphite	Stainless steel / Graphite
4	* Window glass	Borosilicate glass	Borosilicate glass
5	Bolts	–	Stainless steel A2-70



* Available spare parts.

**DOUBLE WINDOW SIGHT GLASSES
DW12G and DW12SS**

DESCRIPTION

The DW12 is a series of double window sight glasses specially designed for installation downstream of steam traps, to monitor their performance such as checking for live steam leakage or blockage. Such devices can also be used for monitoring flow conditions in other applications, particularly in pipelines with liquid medium.

MAIN FEATURES

Compact and cost-effective.
Double window design.
Borosilicate glass.

OPTIONS: Mica shield discs for use with steam.

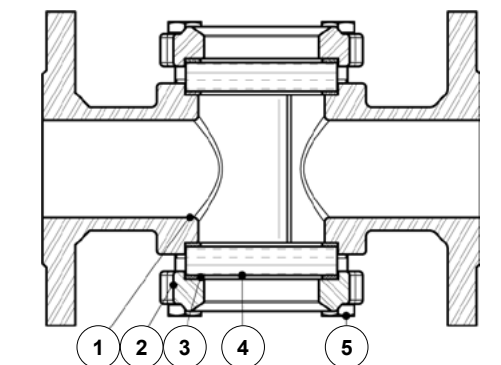
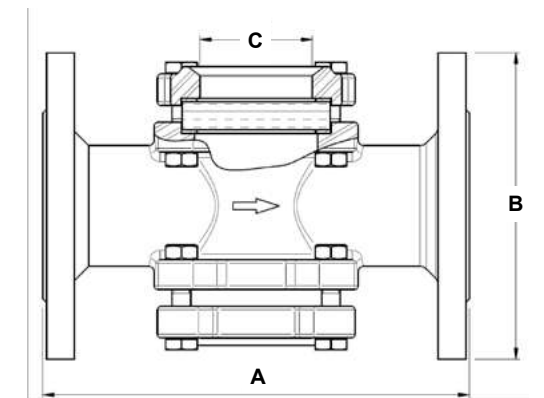
USE: Condensate lines and others (see "Body limiting conditions" table).

AVAILABLE MODELS: DW12G – cast iron.
DW12SS – stainless steel.

SIZES: DN 15 to DN 150.

CONNECTIONS: Flanged EN 1092-1/-2 PN 16.

INSTALLATION: Horizontal or vertical installation.
See IMI.



CE MARKING – GROUP 2 (PED – European Directive)	
PN 16	Category
DN 15 to DN 50	SEP
DN 65 to DN 150	1 (CE marked)

BODY LIMITING CONDITIONS			
DW12G *		DW12SS	
ALLOWABLE PRESSURES	RELATED TEMPERATURE	ALLOWABLE PRESSURES	RELATED TEMPERATURE
16 bar	-10 / 120 °C	16 bar	-10 / 50 °C
14,4 bar	150 °C	14,5 bar	150 °C
12,8 bar	200 °C	13,4 bar	200 °C
11,8 bar	230 °C	12,9 bar	230 °C
10,5 bar	280 °C	12,2 bar	280 °C

For applications with steam, use mica shield discs.

* Warning: The eventual use with steam/gas should be analyzed in accordance with the local applicable legislation, and always ensuring that there is no risk of water hammer.

MATERIALS			
POS. N°	DESIGNATION	DW12G	DW12SS
1	Body	GJL-250 / 0.6025	A351 CF8M / 1.4408
2	Cover	GJL-250 / 0.6025	A351 CF8M / 1.4408
3	* Gasket	Stainless steel / Graphite	Stainless steel / Graphite
4	* Window glass	Borosilicate glass	Borosilicate glass
5	Bolts	Steel 8.8	Stainless steel A2-70

* Available spare parts.