

PRESSURE REDUCING VALVE PRV25

DESCRIPTION

The ADCA PRV25 is a series of direct acting pressure reducing valves designed for use on steam, compressed air, water and other gases and liquids. These regulators are suitable for reducing steam pressure at the point of use on laundry machines, dyeing, food industries, sterilizers, etc.

MAIN FEATURES

Compact design.
Bellows specially designed for high durability.
Non-rising adjustment knob.
Lockable knob system.
Built-in strainer.

OPTIONS: Rising adjustment knob with lock nut.
Top cap (adjustment screw with cover).
Spring and dome load version.
Gauge connection on body.

USE: Saturated steam, compressed air, water and other gases and liquids compatible with the construction.

AVAILABLE MODELS: PRV25/2S and PRV25/2SG – carbon steel.
PRW25/2S – carbon steel, balanced soft sealing.
PRV25i and PRV25iG – stainless steel.
PRW25i – stainless steel, balanced soft sealing.
Suffix G: soft sealed with PTFE/GR.

SIZES: 1/2" to 1"; DN 15 to DN 25.

CONNECTIONS: Female threaded ISO 7 Rp or NPT.
Flanged EN 1092-1 PN 25.
Flanged ASME B16.5 Class 150 or 300.

INSTALLATION: Horizontal installation is recommended.
A "Y" strainer should be installed upstream of the valve.
See IMI – Installation and maintenance instructions.



CE MARKING – GROUP 2 (PED – European Directive)	
PN 25	Category
DN 15 to 25	SEP

LIMITING CONDITIONS

Valve model	PRV25/2S PRV25i	PRV25/2SG PRV25iG	PRW25/2S PRW25i
Body design conditions	PN 25	PN 25	PN 25
Maximum upstream pressure	17 bar	17 bar	14 bar
Maximum downstream pressure	8,6 bar	8,6 bar	8,6 bar
Minimum downstream pressure	0,14 bar	0,14 bar	0,35 bar
Maximum design temperature	210 °C	200 °C	80 °C
Maximum recommended reducing ratio	10:1	10:1	10:1
Maximum dome loading pressure	8,6 bar	8,6 bar	8,6 bar

FLOW RATE COEFFICIENTS (m³/h)

SIZE	1/2" – DN 15	3/4" – DN 20	1" – DN 25
Kvs	1,7	2,6	3,1

REGULATING RANGES

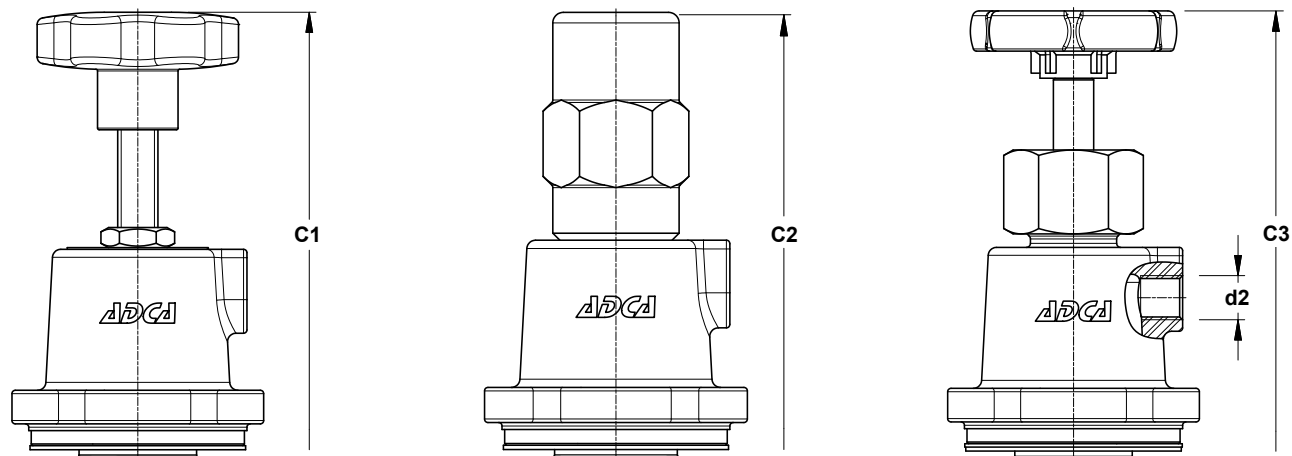
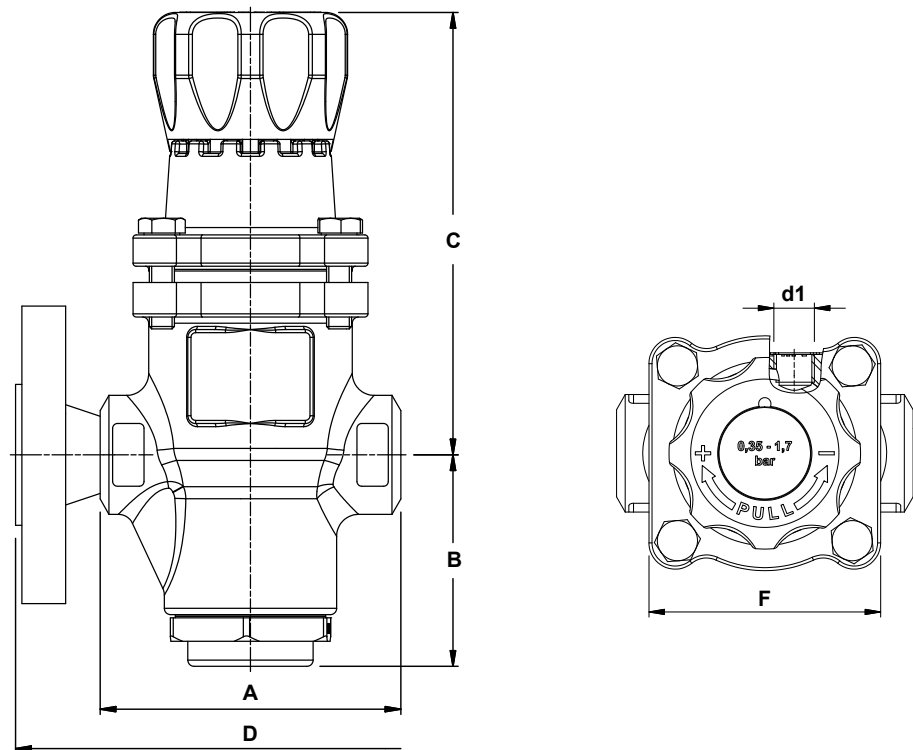
SPRING COLOUR	BLUE *	YELLOW **	GREEN	RED
Spring loaded	0,35 to 1,7 bar	0,14 to 1,7 bar	1,4 to 4 bar	3,5 to 8,6 bar
Spring and dome loaded ***	–	0,14 to 1,2 bar	1 to 3,5 bar	–

* Only applicable to PRW models; ** Only applicable to PRV models.

*** Ranges shown are related to adjustment spring loading forces. Total downstream pressure will correspond to the sum of the pressure resulting from the adjusted spring force and the loading pressure provided by the dome. Not applicable to PRW models.

PRV25 OPTIONAL COVERS

RISING ADJUSTMENT KNOB WITH LOCK NUT	TOP CAP	SPRING AND DOME LOADED
		



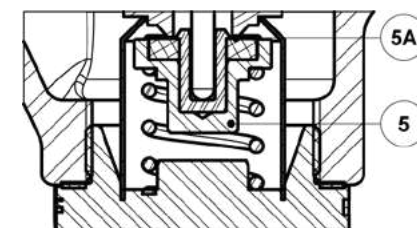
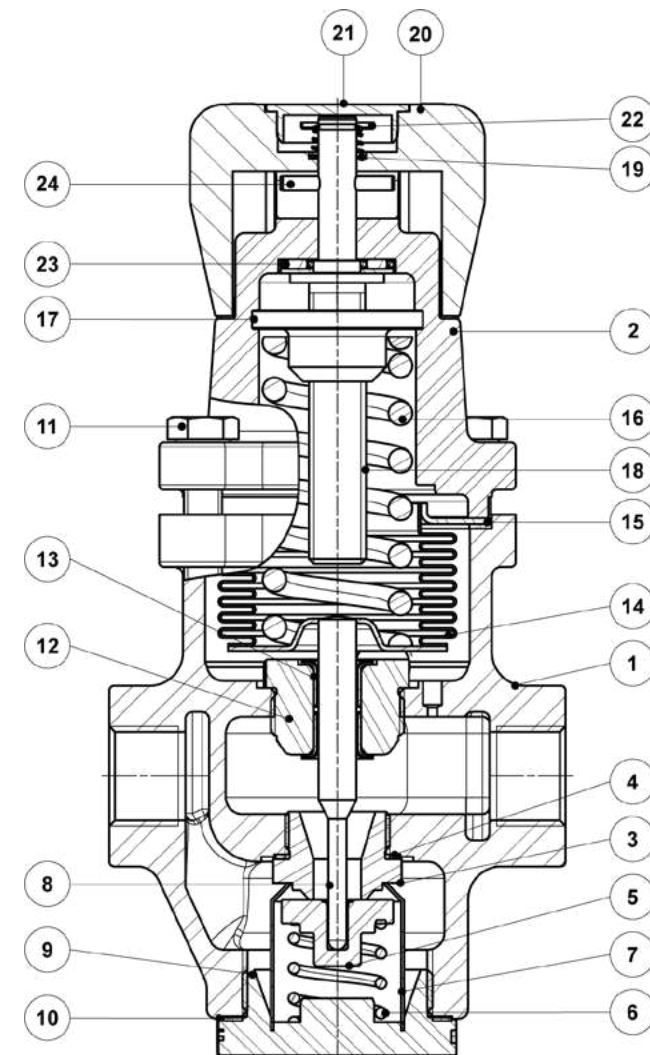
Optional rising adjustment knob

Optional top cap

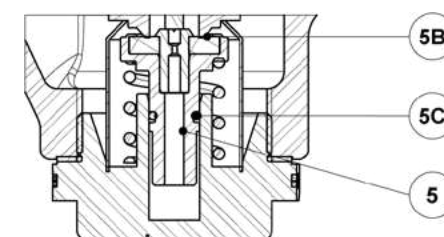
Optional spring and dome loaded version

DIMENSIONS (mm)																
SIZE	THREADED						PN 25		CLASS 150		CLASS 300					
	A	B	C	C1	C2	C3	d1 *	d2 **	F	WGT. (kg)	D	WGT. (kg)	D	WGT. (kg)	D	WGT. (kg)
1/2" - DN 15	96	68,5	141	242	237	243	1/4"	1/4"	74	3	150	4,4	150	4	150	4,4
3/4" - DN 20	96	68,5	141	242	237	243	1/4"	1/4"	74	3	150	5	150	4,4	150	5,3
1" - DN 25	96	68,5	141	242	237	243	1/4"	1/4"	74	2,9	160	5,5	160	5,1	160	5,9

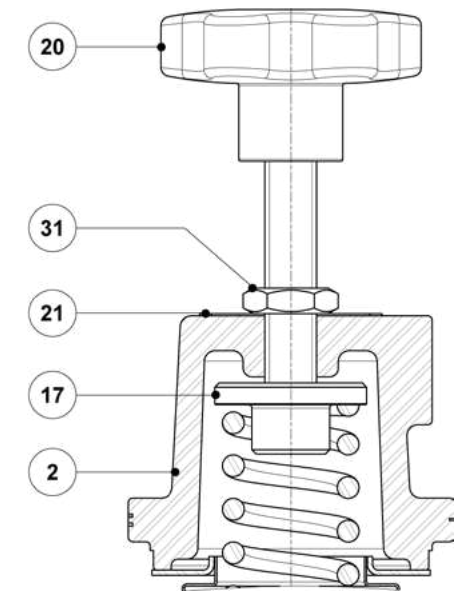
* Optional gauge connection; ** Loading gas dome connection.
Remarks: As standard, in versions manufactured with EN 1092-1 PN 16 flanges or ISO Rp threads, connections d1 and d2 are female threaded ISO 7 Rp. In versions with ASME B16.5 flanges or NPT threads, these connections are female threaded NPT.



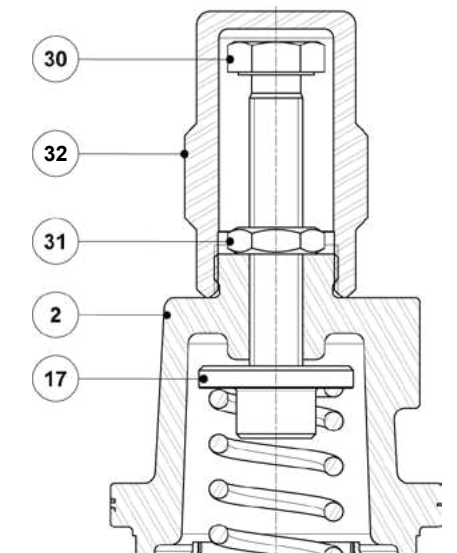
Soft sealing



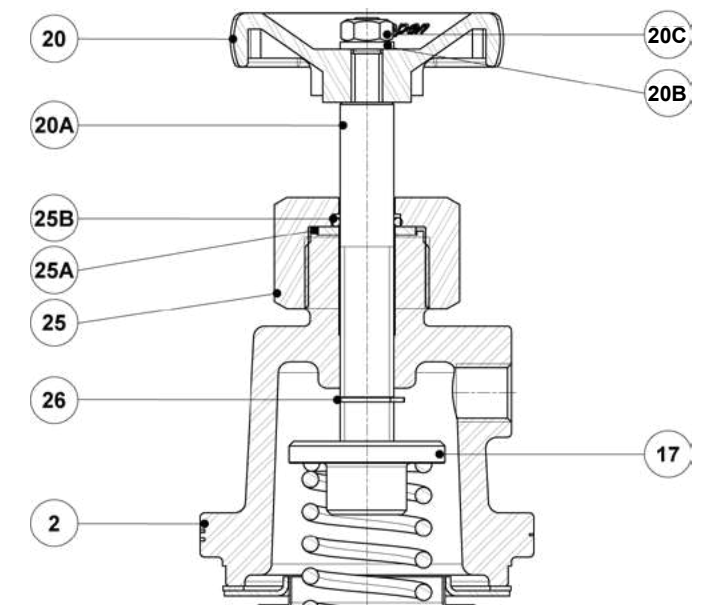
Balanced soft sealing (PRW)



Optional rising adjustment knob



Optional top cap



Optional spring and dome loaded version

MATERIALS		
POS. N°	DESIGNATION	MATERIAL
1	Body (PRV25/2S and PRW25/2S)	A216 WCB / 1.0619
	Body (PRV25i and PRW25i)	A351 CF8M / 1.4408
2	Cover (PRV25/2S and PRW25/2S)	A216 WCB / 1.0619
	Cover (PRV25i and PRW25i)	A351 CF8M / 1.4408
3	* Seat	AISI 316 / 1.4401
4	* Gasket	Copper
5	* Valve plug	Hardened stainless steel
5A	* Valve head	Graphite filled PTFE
5B	* Valve head	NBR
5C	* O-ring	NBR
6	* Valve spring	AISI 302 / 1.4300
7	* Strainer screen	AISI 304 / 1.4301
8	Pushrod	AISI 316 / 1.4401
9	Bottom cover	A351 CF8M / 1.4408
10	* Gasket	Stainless steel / Graphite
11	Bolts (PRV25/2S and PRW25/2S)	Steel 8.8
	Bolts (PRV25i and PRW25i)	Stainless steel A2-70
12	* Guide bush	AISI 316 / 1.4401
13	* Plain bearing	Bronze filled PTFE
14	* Bellows	AISI 316 Ti / 1.4571
15	* Bellows gasket	Stainless steel / Graphite
16	* Adjustment spring	Steel
17	Top spring plate	Brass
18	Adjustment screw	AISI 304 / 1.4301
19	Spring	AISI 302 / 1.4300
20	Adjustment knob	Nylon
20A	Adjustment stem	AISI 304 / 1.4301
20B	Washer	Stainless steel
20C	Nut	Stainless steel A2-70
21	Spring identification plate	Plastic; Aluminium
22	Retaining washer	AISI 302 / 1.4300
23	Bearing	Steel
24	Pin	AISI 304 / 1.4301
25	Cover nut	AISI 303 / 1.4305
25A	* Gasket	PTFE
25B	* O-ring	EPDM
26	Retaining ring	Stainless steel A2-70
30	Adjustment screw	Stainless steel A2-70
31	Nut	Stainless steel A2-70
32	Top cap	AISI 303 / 1.4305

* Available spare parts.

CAPACITY TABLE														
SATURATED STEAM (kg/h)					COMPRESSED AIR (Nm ³ /h - 0 °C - 1,013 bar)					WATER (m ³ /h)				
INLET (bar)	OUTLET (bar)	SIZE			INLET (bar)	OUTLET (bar)	SIZE			D.P (bar)	SIZE			
		DN 15	DN 20	DN 25			DN 15	DN 20	DN 25		DN 15	DN 20	DN 25	
2	0,2 - 1	75	110	132	2	0,2 - 1	120	126	147	1,5	2,10	3,21	3,83	
	1,8	68	102	125		1,8	109	112	135		2	2,43	3,70	4,42
3	0,3 - 1,5	104	148	177	3	0,3 - 1,5	157	169	195	3	2,95	4,54	5,41	
	2	97	141	170		2	150	162	187		4	3,43	5,24	6,25
	2,6	90	134	162		2,6	142	153	178		5	3,78	5,78	6,90
4	0,4 - 2	125	180	210	4	0,4 - 2	196	203	243	4	4,16	6,25	7,45	
	2,5	118	171	201		2,5	188	196	235		7	4,37	6,68	7,96
	3,6	107	158	190		3,6	170	181	219		8	4,63	7,08	8,45
5	0,5 - 2,5	137	192	230	5	0,5 - 2,5	208	222	253	5	4,88	7,47	8,90	
	3	134	189	222		3	202	211	242		10	5,12	7,83	9,34
	4,5	128	183	213		4,5	197	203	235		12	5,56	8,51	10,15
6	0,6 - 3	166	221	266	6	0,6 - 3	240	251	298	6				
	4	154	212	256		4	232	244	286					
	5,5	138	200	242		5,5	225	230	266					
7	0,7 - 3,5	175	250	300	7	0,7 - 3,5	269	282	337	7				
	4,5	168	242	290		4,5	260	270	321					
	5,5	157	228	270		5,5	245	255	300					
8	0,8 - 4	222	300	357	8	0,8 - 4	323	339	396	8				
	5	208	290	350		5	315	330	383					
	6	189	271	330		6	290	306	361					
9	0,9 - 4,5	230	321	382	9	0,9 - 4,5	347	363	424	9				
	6	209	300	363		6	322	340	400					
	7	192	271	324		7	293	309	364					
10	1 - 5	238	341	408	10	1 - 5	372	388	453	10				
	6	230	330	397		6	354	375	438					
	7	215	307	363		7	328	348	410					
11	0,8 - 6	177	260	312	11	0,8 - 6	280	296	348	11				
	1,1 - 5,5	250	358	427		1,1 - 5,5	387	404	474					
	6	244	348	415		6	375	394	463					
12	7	237	337	402	12	7	362	383	451	12				
	8,6	206	296	356		8,6	319	338	398					
	1,2 - 6	265	375	449		1,2 - 6	404	423	500					
13	7	260	370	444	13	7	398	418	492	13				
	8	246	350	421		8	375	400	469					
	8,6	236	333	400		8,6	358	380	448					
15	1,3 - 6,5	281	398	476	15	1,3 - 6,5	428	447	530	15				
	7	279	391	470		7	420	440	522					
	8	266	381	459		8	411	431	510					
17	8,6	257	367	440	17	8,6	395	416	494	17				
	1,5 - 7,5	300	424	508		1,5 - 7,5	455	477	565					
	8,6	285	408	488		8,6	439	463	546					
	1,7 - 8,6	321	453	543		1,7 - 8,6	486	510	604					

**PISTON SENSING PRESSURE REDUCING VALVES
P20P**

DESCRIPTION

The ADCA P20P is a series of direct acting, spring loaded, piston sensing pressure reducing valves. These regulators are designed for use with nitrogen, compressed air, water and other gases and liquids compatible with the materials of construction. They are suitable for general purpose pressure reducing applications such as instrumentation systems and industrial equipment where small loads and high pressures are involved.

MAIN FEATURES

- Compact design.
- Machined from bar stock materials.
- Non-rising adjustment knob.
- Ultrasonically cleaned and degreased.

- OPTIONS:**
- Gauge connection on body.
 - Different soft valves for liquids and gases.
 - Top cap (adjustment screw with cover).
 - Degreased for oxygen application.
 - Leakage line connection.
 - Panel mounting.
 - Bottom mounting.
 - Self relieving.

USE: Compressed air, water and other gases and liquids compatible with the construction.

AVAILABLE MODELS: P20P – stainless steel, piston sensing, low flow.

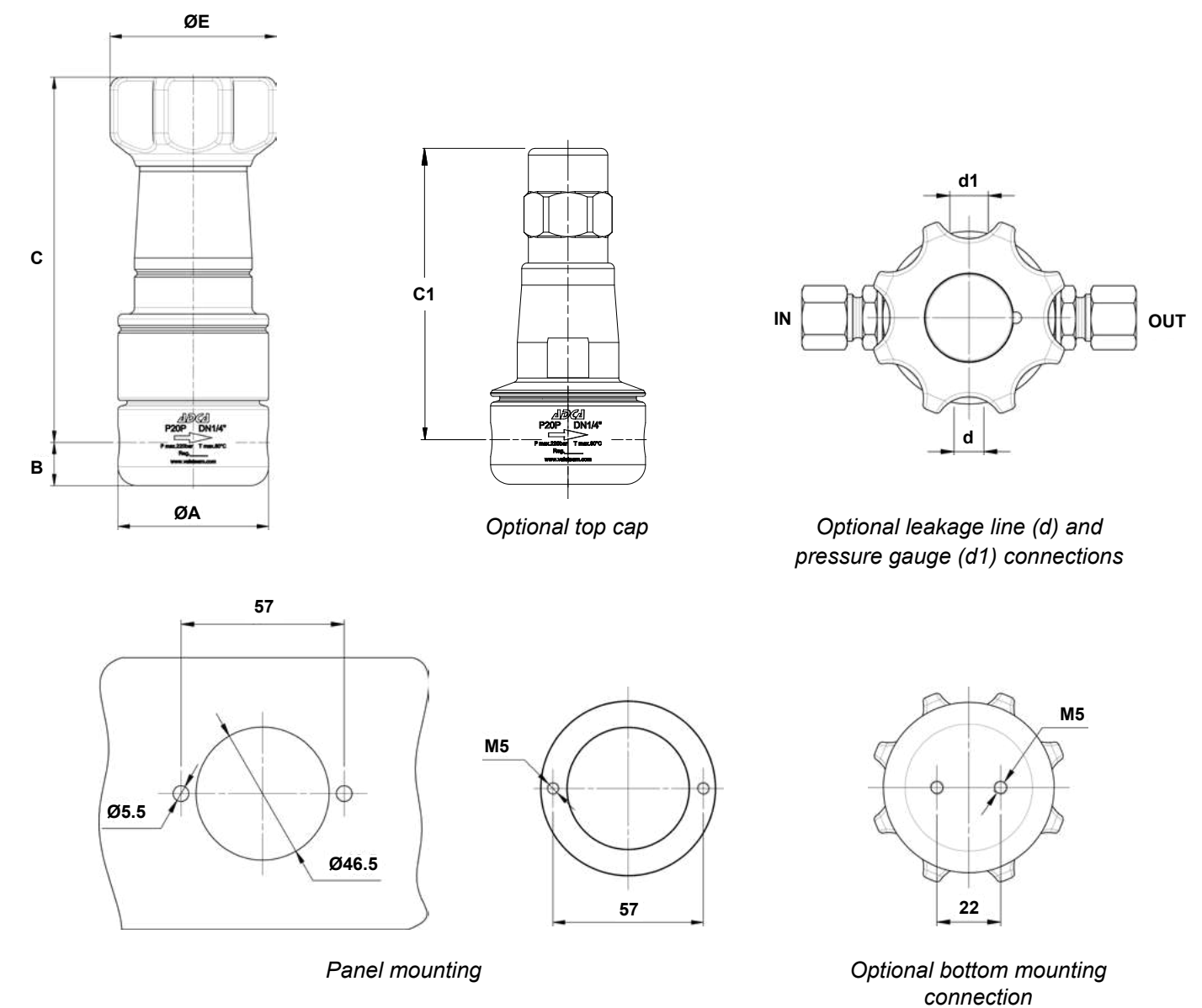
SIZES: 1/4".

CONNECTIONS: Female threaded ISO 7 Rp, ISO 228 or NPT.

INSTALLATION: In any position. See IMI – Installation and maintenance instructions.



OPTIONS			
PRESSURE GAUGE CONN.	TOP CAP	LEAKAGE LINE CONNECTION	PANEL MOUNTING



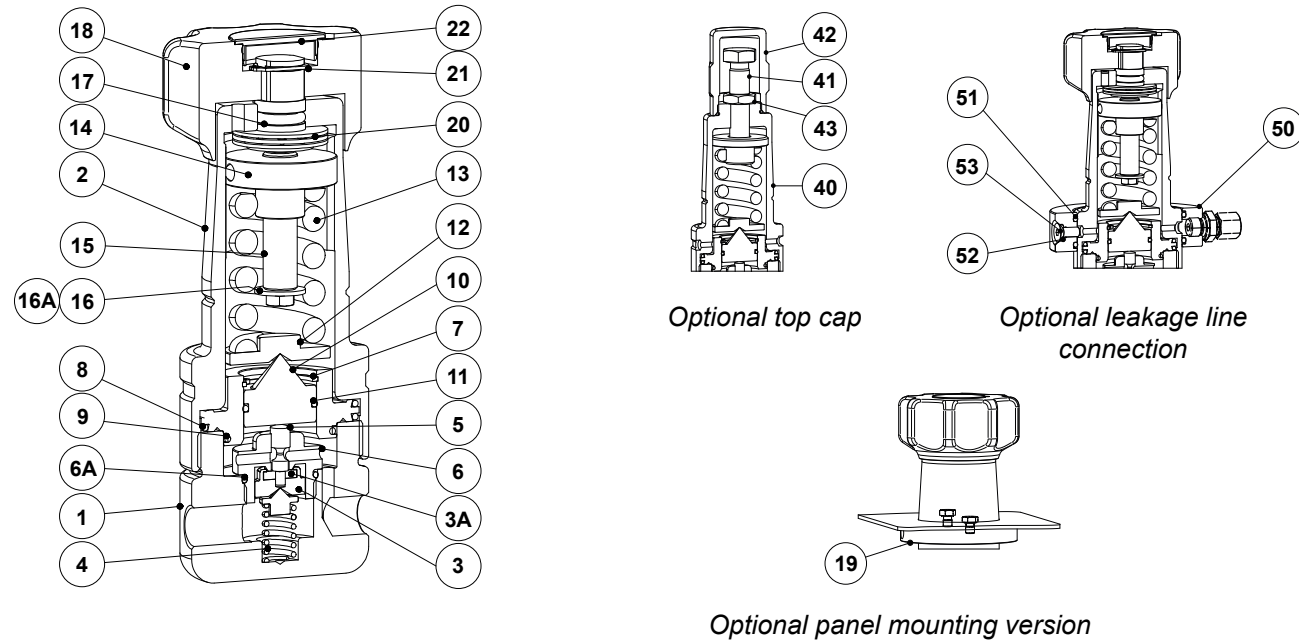
CE MARKING – GROUP 2 (PED – European Directive)	
PN 320	Category
1/4"	SEP

FLOW RATE COEFFICIENTS (m³/h)			
SIZE	1/4"		
Kvs	0,043	0,22	0,62

LIMITING CONDITIONS	
Valve model	P20P
Body design conditions	PN 320
Maximum upstream pressure	220 bar
Maximum downstream pressure	200 bar
Minimum downstream pressure	0,2 bar
Maximum design temperature	80 °C
Maximum recommended reducing ratio	40:1

DIMENSIONS (mm)								
SIZE	ØA	B	C	C1	d	d1	ØE	WEIGHT (kg)
1/4"	59	17	143,5	171	1/8"	1/4"	69	2,5

Remarks: As standard, in versions manufactured with ISO threads, connections d1 and d2 are female threaded ISO 228. In versions with NPT threads, these connections are female threaded NPT.



MATERIALS		
POS. N°	DESIGNATION	MATERIAL
1	Valve body	AISI 316L / 1.4404
2	Cover	AISI 316L / 1.4404
3	* Plug	AISI 316L / 1.4404
3A	* Valve head	** NBR; EPDM; PTFE; FPM
4	* Valve spring	AISI 302 / 1.4300
5	* Pushrod	AISI 316L / 1.4404
6	Seat	AISI 316L / 1.4404
6A	* O-ring	** NBR; EPDM; FPM
7	Piston sleeve	AISI 316L / 1.4404
8	* O-ring	** NBR; EPDM; FPM
9	* O-ring	** NBR; EPDM; FPM
10	Piston	AISI 316L / 1.4404
11	* O-ring	** NBR; EPDM; FPM
12	Plate	AISI 316L / 1.4404
13	* Adjustment spring	AISI 302 / 1.4300
14	Spring guide	AISI 316L / 1.4404
15	Adjustment screw	AISI 316L / 1.4404
16	Washer	Stainless steel A2
16A	Bolt	Stainless steel A2-70
17	* O-ring	NBR
18	Adjustment knob	Painted aluminium
19	Panel mounting ring	AISI 316L / 1.4404
20	Bearing	Corrosion resistant steel
21	Shaft ring	Stainless steel
22	Cover nut	Plastic
40	Cover	AISI 316L / 1.4404
41	Adjustment screw	Stainless steel A2-70
42	Top cap	AISI 316L / 1.4404
43	Locknut	Stainless steel A2
50	Leakage line ring	AISI 316L / 1.4404
51	O-ring	** NBR
52	O-ring	** FPM
53	Bolt	AISI 304 / 1.4301

* Available spare parts. ** Others on request.

Remarks: All valves have a serial number. In case of non-standard valves this number must be supplied if spare parts are ordered.

ORDERING CODES P20P													
Valve model	P20P	.	1	W	N	F	4	R	P	.	A	1	08
P20P – piston sensing pressure reducing valve	P20P	.											
Regulating range													
N°1 – 0,2 to 1,5 bar			1										
N°2 – 0,3 to 3 bar			2										
N°3 – 0,8 to 8 bar			3										
N°4 – 1,5 to 15 bar			4										
N°5 – 3 to 30 bar			5										
N°6 – 5 to 50 bar			6										
N°7 – 20 to 200 bar			7										
Application													
Water				W									
Gases				G									
Oxygen (degreased)				O									
Seal material													
NBR					N								
EPDM					E								
PTFE a)					T								
FPM / Viton					V								
Maximum inlet pressure													
220 bar										F			
Gauge port options													
Without gauge ports												(1)	
Gauge port on the left side (relative to the flow direction)												4	
Gauge port on the right side (relative to the flow direction)												3	
Gauge ports on both sides												2	
Relieving and leakage line connection													
Non-relieving												(1)	
Relieving (only for non dangerous gases)												R	
Relieving with leakage line connection												L	
Panel mounting													
Without panel mounting ring												(1)	
With panel mounting ring												P	
Pipe connection													
Female threaded ISO 7 Rp (non-standard)													A
Female threaded ISO 228													B
Female threaded NPT ASME B1.20.1													C
Flow rate coefficient													
Kvs 0,043													1
Kvs 0,22													2
Kvs 0,62													3
Size													
1/4"													08
Special valves / Extras													
Full description or additional codes have to be added in case of non-standard combination.													E

(1) Omitted if a standard valve is requested.

a) Valve head only, other seals in FPM/Viton or others on request.

DIAPHRAGM SENSING PRESSURE REDUCING VALVES P20D

DESCRIPTION

The ADCA P20D is a series of direct acting, spring-loaded, diaphragm sensing and balanced plug pressure reducing valves. These regulators are designed for use with compressed air, water and other gases and liquids compatible with the construction materials and valve design. They are suitable for pressure reducing applications at the point of use in laundry and dyeing machines, food industries, sterilizers, etc.

MAIN FEATURES

- Compact design.
- Non-rising adjustment knob.
- Balanced valve plug.
- Completely machined from solid bar stock material.
- Ultrasonically cleaned.

- OPTIONS:**
- Leakage line connection.
 - Gauge connection on body.
 - Different soft valves for liquids and gases.
 - Top cap (adjustment screw with cover).
 - Degreased for oxygen application.
 - Panel mounting.
 - Self relieving.

- USE:** Compressed air, water and other gases and liquids compatible with the construction.

- AVAILABLE MODELS:** P20D – stainless steel, diaphragm sensing.

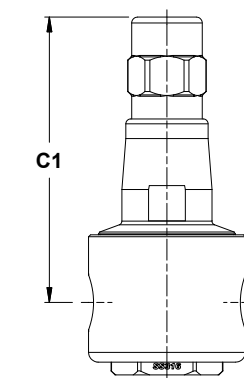
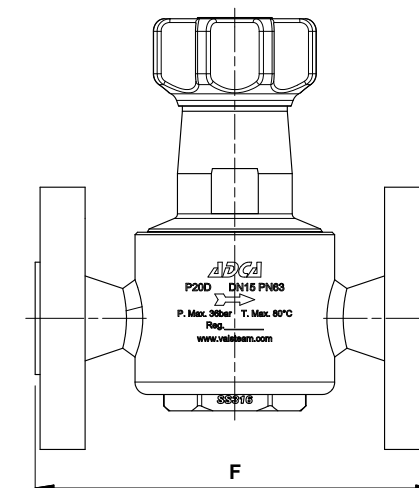
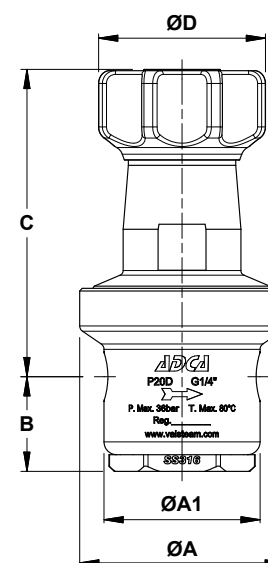
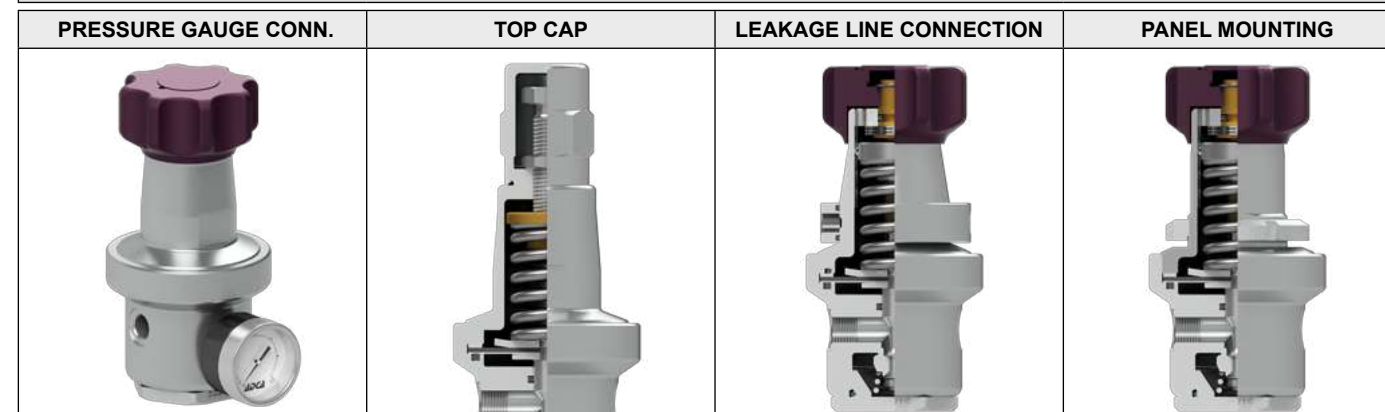
- SIZES:** 1/4" to 1/2"; DN 15.

- CONNECTIONS:** Female threaded ISO 7 Rp, ISO 228 or NPT.
Flanged EN 1092-1 PN 40.
Flanged ASME B16.5 Class 150 or 300.

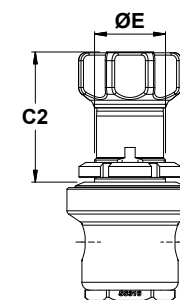
- INSTALLATION:** Horizontal or vertical installation.
See IMI – Installation and maintenance instructions.



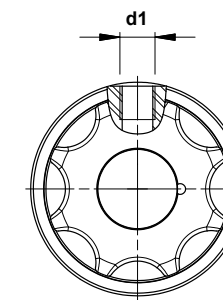
OPTIONS



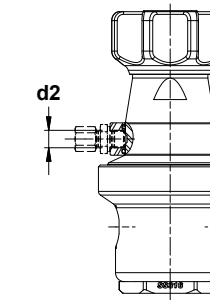
Optional top cap



Optional panel mounting version



Optional pressure gauge connection



Optional leakage line connection

CE MARKING – GROUP 2 (PED – European Directive)	
PN 40	Category
1/4" to 1/2" – DN 15	SEP

FLOW RATE COEFFICIENTS (m³/h)			
SIZE	1/4"	3/8"	1/2" – DN 15
Kvs	1,2	1,8	1,8

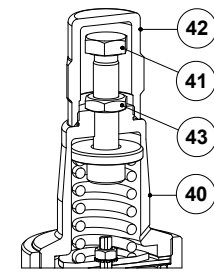
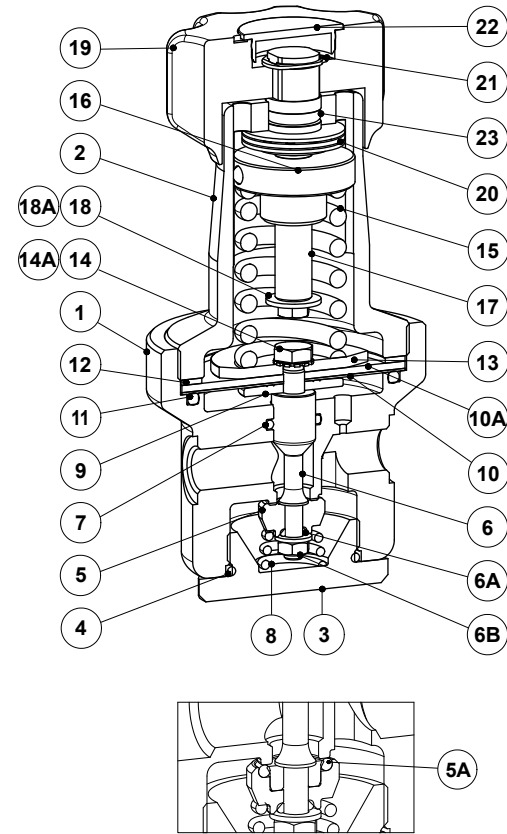
LIMITING CONDITIONS				
Valve model	P20D			
Body design conditions	Cl. 150	Cl. 300	PN 40	PN 63 *
Max. upstream pressure	16 bar	40 bar	40 bar	50 bar
Max. downstream pressure	15 bar			
Min. downstream pressure	0,2 bar			
Max. design temperature	80 °C			
Max. recommended reducing ratio	40:1			

* Rating PN 63 for threaded versions.

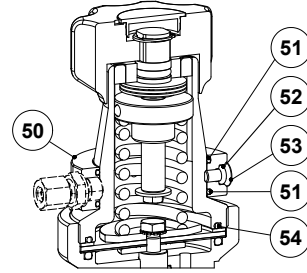
DIMENSIONS (mm)																	
SIZE	THREADED										PN 40		CLASS 150		CLASS 300		
	ØA	ØA1	B	C	C1	C2	ØD	ØE	d1	d2	WGT. (kg)	F *	WGT. (kg)	F *	WGT. (kg)		
1/4"	80	61	37	120	146	83	69	45	1/4"	1/8"	2,3	–	–	–	–	–	
3/8"	80	61	37	120	146	83	69	45	1/4"	1/8"	2,3	–	–	–	–	–	
1/2" – DN 15	80	80	37	120	146	83	69	45	1/4"	1/8"	2,9	150	4,4	160	3,9	170	4,5

* Different face to face dimensions on request.

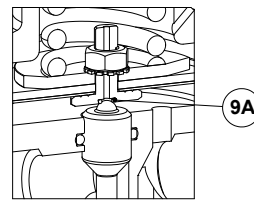
Remarks: As standard, in versions manufactured with EN 1092-1 flanges or ISO threads, connections d1 and d2 are female threaded ISO 228. In versions with ASME B16.5 flanges or NPT threads, these connections are female threaded NPT.



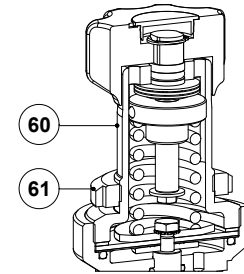
Optional top cap



Optional leakage line connection



Optional relieving version



Optional panel mounting version

MATERIALS		
POS. N°	DESIGNATION	MATERIAL
15	* Adjustment spring	AISI 302 / 1.4300
16	Spring guide	AISI 316 / 1.4401
17	Adjustment screw	Brass
18	Washer	Stainless steel A2
18A	Bolt	Stainless steel A2-70
19	Adjustment knob	Painted aluminium
20	Bearing	Corrosion resistant steel
21	Shaft ring	Stainless steel
22	Cover nut	Plastic
23	* O-ring	NBR
40	Cover	AISI 316L / 1.4404
41	Adjustment screw	Stainless steel A2-70
42	Top cap	AISI 316L / 1.4404
43	Locknut	Stainless steel A2
50	Leakage line ring	AISI 316L / 1.4404
51	O-ring	** NBR
52	O-ring	** FPM
53	Bolt	AISI 304 / 1.4301
54	O-ring	** NBR
60	Cover for panel mounting	AISI 316L / 1.4404
61	Panel mounting ring	A351 CF8 / 1.4308

* Available spare parts. ** Others on request.

Remark: All valves have a serial number. In case of non-standard valves this number must be supplied if spare parts are ordered.

MATERIALS		
POS. N°	DESIGNATION	MATERIAL
1	Valve body	AISI 316 / 1.4401
2	Cover	AISI 316 / 1.4401
3	Bottom cover	A351 CF8M / 1.4408
4	* O-ring	** NBR
5	* Valve head	AISI 316 / 1.4401
5A	* O-ring	** NBR; EPDM; PTFE; FPM
6	* Piston	AISI 316 / 1.4401
6A	* O-ring	** NBR
6B	Nut	Stainless steel A2
7	* Piston o-ring	** NBR; EPDM; FPM
8	Valve spring	AISI 302 / 1.4300
9	Pusher disc	AISI 316 / 1.4401
9A	* O-ring	** NBR
10	* Lower diaphragm	** PTFE
10A	* Upper diaphragm	** NBR
11	* O-ring	** NBR
12	Gasket	Aluminium
13	Spring plate	AISI 304 / 1.4301
14	Nut	Stainless steel A2
14A	* Serrated washer	AISI 304 / 1.4301

ORDERING CODES P20D												
Valve model	P20	.	1	W	N	C	R	4	R	.	B	08
P20D – diaphragm sensing pressure reducing valve	P20											
Regulating range												
N° 1 – 0,2 to 1,5 bar			1									
N° 2 – 0,3 to 3 bar			2									
N° 3 – 0,8 to 8 bar			3									
N° 4 – 1,5 to 15 bar			4									
Application												
Water				W								
Gases				G								
Oxygen (degreased)				O								
Seal material a)												
NBR					N							
EPDM					E							
PTFE					T							
FPM / Viton					V							
Maximum inlet pressure												
50 bar							D					
Diaphragm												
NBR / PTFE									R			
Gauge port options												
Without gauge ports												(1)
Gauge port on the left side (relative to the flow direction)												4
Gauge port on the right side (relative to the flow direction)												3
Gauge ports on both sides												2
Top cap, relieving, leakage line connection and panel mounting												
Non-relieving												(1)
Relieving (only for non-dangerous gases)												R
Relieving with leakage line connection												L
Non-relieving with top cap (adjustment screw with cover)												T
Relieving with top cap (adjustment screw with cover, only for non-dangerous gases)												V
Panel mounting version, non-relieving												P
Panel mounting version with relieving (only for non-dangerous gases)												Q
Pipe connection												
Female threaded ISO 7 Rp (non-standard)												A
Female threaded ISO 228												B
Female threaded NPT ASME B1.20.1												C
Flanged EN 1092-1 PN 40												N
Flanged ASME B16.5 Class 150												U
Flanged ASME B16.5 Class 300												V
Size												
1/4"												08
3/8"												10
1/2" or DN 15												15
Special valves / Extras												
Full description or additional codes have to be added in case of non-standard combination.												E

(1) Omitted if a standard valve is requested.
a) Valve head only. Remaining valve seals on request.

DIAPHRAGM SENSING PRESSURE REDUCING VALVES P20DS

DESCRIPTION

The ADCA P20DS is a series of direct acting, spring loaded, diaphragm sensing balanced plug pressure reducing valves. These regulators are particularly suitable for general purpose applications where low flow and high temperatures are involved and have been especially designed for use with steam.

MAIN FEATURES

Compact design.
Robust stainless steel diaphragm.
Non-rising adjustment knob.
Balanced valve plug.
Completely machined from solid bar stock material.

OPTIONS: Leakage line connection.
Gauge connection on body.
Different soft valves for liquids and gases.
Top cap (adjustment screw with cover).
Degreased for oxygen application.
Connection for external sensing line.
Panel mounting.

USE: Steam, compressed air and other gases compatible with the construction.

AVAILABLE MODELS: P20DS – stainless steel, diaphragm sensing.

SIZES: 1/4" to 1/2"; DN 15.

CONNECTIONS: Female threaded ISO 7 Rp, ISO 228 or NPT.
Flanged EN 1092-1 PN 40.
Flanged ASME B16.5 Class 150 or 300.

INSTALLATION: Horizontal or vertical installation.
See IMI – Installation and maintenance instructions.



CE MARKING – GROUP 2 (PED – European Directive)

PN 25	Category
1/4" to 1/2" – DN 15	SEP

FLOW RATE COEFFICIENTS (m³/h)

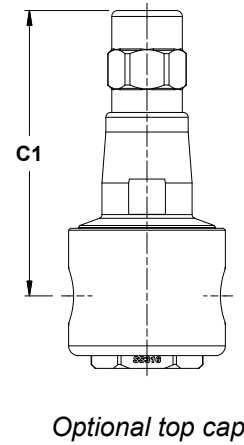
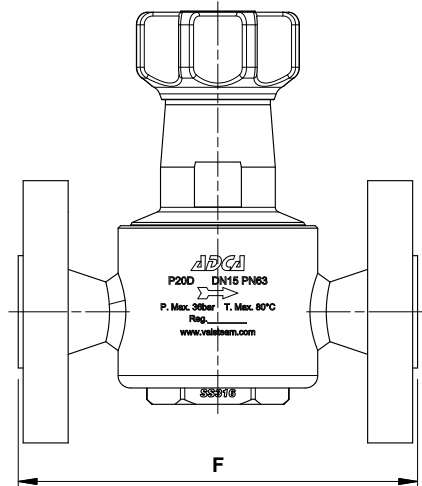
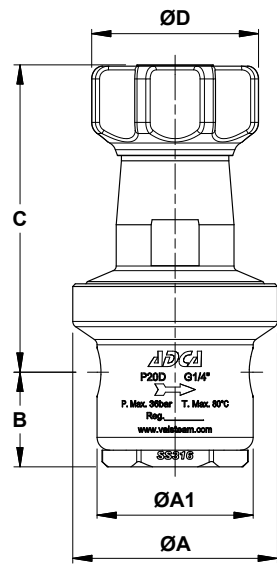
SIZE	1/4"	3/8"	1/2" – DN 15
Kvs	1,2	1,8	1,8

LIMITING CONDITIONS

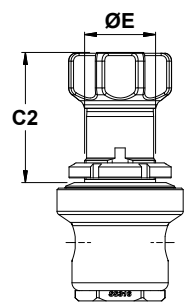
Valve model	P20DS		
Body design conditions	Cl. 150	Cl. 300	PN 40
Max. upstream pressure	14 bar	14 bar	14 bar
Max. downstream pressure	8 bar		
Min. downstream pressure	0,2 bar		
Max. design temperature	200 °C		
Max. recommended reducing ratio	10:1		

OPTIONS			
PRESSURE GAUGE CONN.	TOP CAP	LEAKAGE LINE CONNECTION *	PANEL MOUNTING

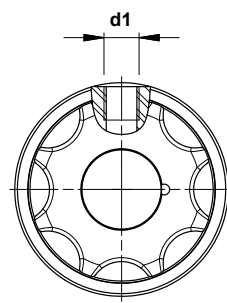
* Not recommended with medium temperatures higher than 80 °C.



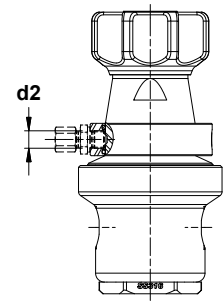
Optional top cap



Optional panel mounting version



Optional pressure gauge connection

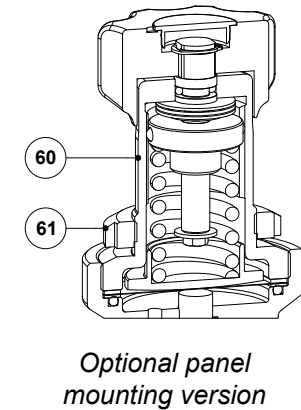
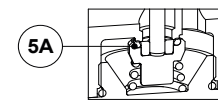
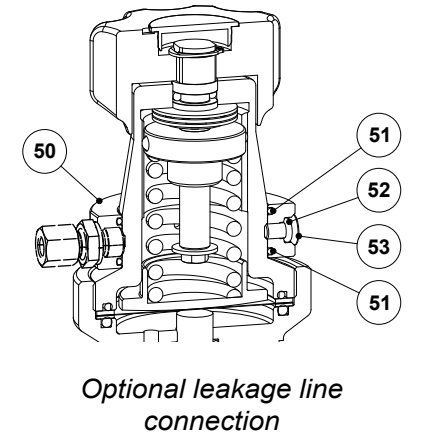
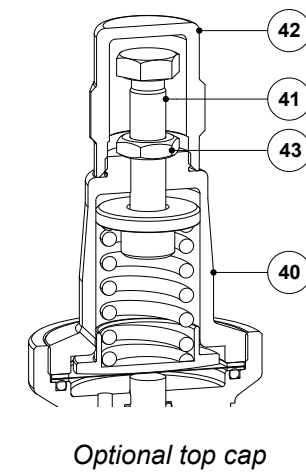
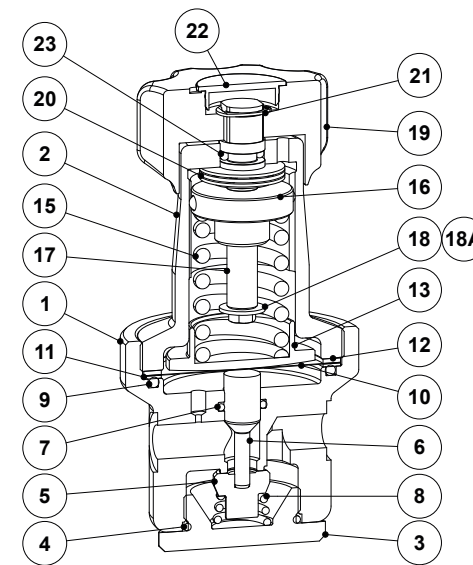


Optional leakage line connection

DIMENSIONS (mm)																	
SIZE	THREADED										PN 40		CLASS 150		CLASS 300		
	ØA	ØA1	B	C	C1	C2	ØD	ØE	d1	d2	WGT. (kg)	F *	WGT. (kg)	F *	WGT. (kg)	F *	WGT. (kg)
1/4"	80	61	37	120	146	83	69	45	1/4"	1/8"	2,3	-	-	-	-	-	-
3/8"	80	61	37	120	146	83	69	45	1/4"	1/8"	2,3	-	-	-	-	-	-
1/2" - DN 15	80	80	37	120	146	83	69	45	1/4"	1/8"	2,9	150	4,4	160	3,9	170	4,5

* Different face to face dimensions on request.

Remarks: As standard, in versions manufactured with EN 1092-1 flanges or ISO threads, connections d1 and d2 are female threaded ISO 228. In versions with ASME B16.5 flanges or NPT threads, these connections are female threaded NPT.



MATERIALS		
POS. N°	DESIGNATION	MATERIAL
1	Valve body	AISI 316 / 1.4401
2	Cover	AISI 316 / 1.4401
3	Bottom cover	A351 CF8M / 1.4408
5	* Valve head	AISI 316 / 1.4401
5A	* O-ring	** NBR; EPDM; PTFE; FPM
6	* Piston	AISI 316 / 1.4401
7	* Piston o-ring	** FPM
8	Valve spring	AISI 302 / 1.4300
10	* Diaphragm	AISI 301 / 1.4410
11	* O-ring	** FPM
12	Gasket	Aluminium
13	Spring plate	AISI 304 / 1.4301
15	* Adjustment spring	AISI 302 / 1.4300
16	Spring guide	AISI 316 / 1.4401
17	Adjustment screw	Brass
18	Washer	Stainless steel A2
18A	Bolt	Stainless steel A2-70
19	Adjustment knob	Painted aluminium
20	Bearing	Corrosion resistant steel
21	Shaft ring	Stainless steel



MATERIALS		
POS. N°	DESIGNATION	MATERIAL
22	Cover nut	Plastic
23	* O-ring	NBR
40	Cover	AISI 316L / 1.4404
41	Adjustment screw	Stainless steel A2-70
42	Top cap	AISI 316L / 1.4404
43	Locknut	Stainless steel A2
50	Leakage line ring	AISI 316L / 1.4404
51	O-ring	** NBR
52	O-ring	** FPM
53	Bolt	AISI 304 / 1.4301
54	O-ring	** FPM
60	Cover for panel mounting	AISI 316L / 1.4404
61	Panel mounting ring	A351 CF8 / 1.4308

* Available spare parts. ** Others on request.

Remark: All valves have a serial number. In case of non-standard valves this number must be supplied if spare parts are ordered.



ORDERING CODES P20DS												
Valve model	P20DS	.	1	S	N	S	4	.	B	08		
P20DS – diaphragm sensing pressure reducing valve	P20DS											
Regulating range												
N°1 – 0,2 to 1,5 bar			1									
N°2 – 0,3 to 3 bar			2									
N°3 – 0,8 to 8 bar			3									
Application												
Steam				S								
Gases				G								
Oxygen (degreased)				O								
Seal material a)												
NBR					N							
EPDM					E							
PTFE					T							
FPM / Viton					V							
Diaphragm												
Stainless steel						S						
Gauge port options												
Without gauge ports										(1)		
Gauge port on the left side (relative to the flow direction)										4		
Gauge port on the right side (relative to the flow direction)										3		
Gauge ports on both sides										2		
Pipe connection												
Female threaded ISO 7 Rp (non-standard)											A	
Female threaded ISO 228											B	
Female threaded NPT ASME B1.20.1											C	
Flanged EN 1092-1 PN 40											N	
Flanged ASME B16.5 Class 150											U	
Flanged ASME B16.5 Class 300											V	
Size												
1/4"												08
3/8"												10
1/2"												15
Special valves / Extras												
Full description or additional codes have to be added in case of non-standard combination.												E

(1) Omitted if a standard valve is requested.

a) Valve head only. Remaining valve seals on request. Valve limited to the materials maximum operating temperature. Contact manufacturer for more details.

Remark: Options not mentioned in the ordering codes table must be requested separately, e.g.: P20DS.1SNS4.B08 with top cap and panel mounting.

**DIAPHRAGM SENSING PRESSURE REDUCING VALVE
P7**

DESCRIPTION

The ADCA P7 series pressure reducing valves are direct acting, spring loaded, diaphragm sensing balanced plug regulators designed for use with steam, nitrogen, compressed air, water and other gases and liquids compatible with the materials of construction. Particularly suitable for general purpose applications where low flow and high temperatures are involved. Also specifically recommended to operate as a pilot valve in combination with other pressure regulators.

MAIN FEATURES

Compact design.
Robust stainless steel diaphragm.
Precise milibar control.



- OPTIONS:**
- 1/4" gauge connection on body.
 - Top cap (adjustment screw with cover).
 - External sensing connection.
 - Low pressure top.
 - Dome loaded version.
 - Bar stock stainless steel construction.

USE: Steam, compressed air and other gases compatible with the construction.

AVAILABLE MODELS: P7SS – stainless steel, diaphragm sensing.

SIZES: 1/4" and 3/8".

CONNECTIONS: Female threaded ISO 7 Rp or NPT.

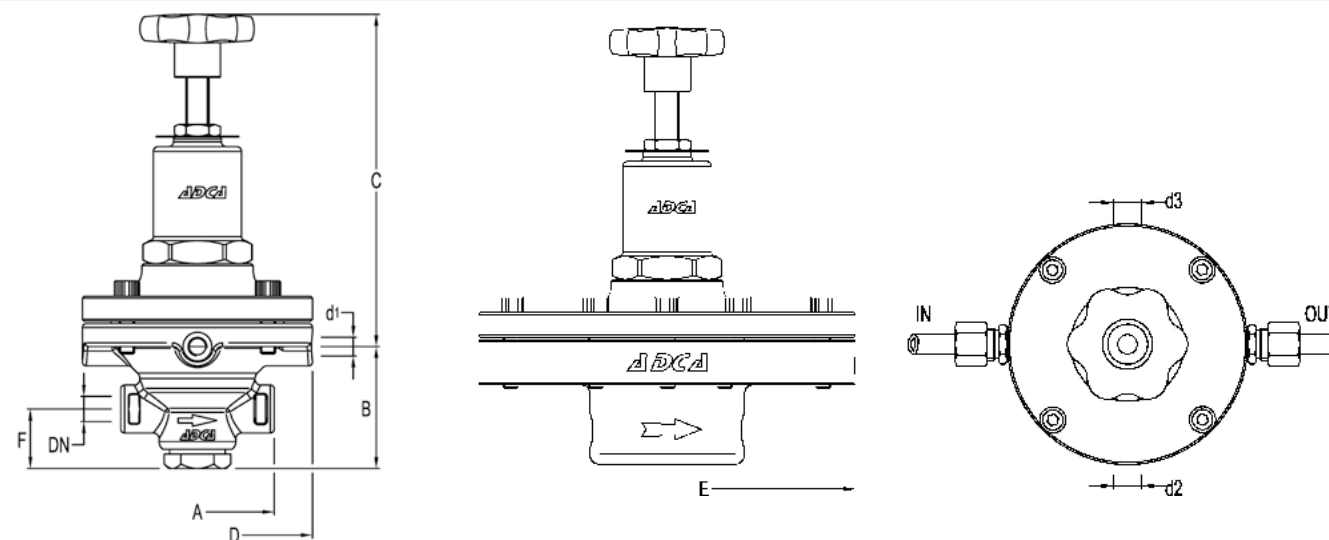
INSTALLATION: Horizontal installation.
See IMI – Installation and maintenance instructions.

FLOW RATE COEFFICIENTS (m³/h)		
SIZE	1/4"	3/8"
Kvs	1	1,1

LIMITING CONDITIONS	
Valve model	P7SS
Body design conditions	PN 40
Maximum upstream pressure (steam)	25 bar
Maximum upstream pressure (gases)	31 bar
Maximum downstream pressure	17 bar
Minimum downstream pressure *	0,35 bar
Maximum design temperature	300 °C

* 0,07 bar with low pressure top (limited at 7 bar inlet).
The low pressure diaphragm should be fitted for outlet pressures from 0,07 up to 0,5 bar.
Pressure and temperature limiting conditions may change if soft sealing is used.

CE MARKING – GROUP 2 (PED – European Directive)	
PN 40	Category
1/4" and 3/8"	SEP



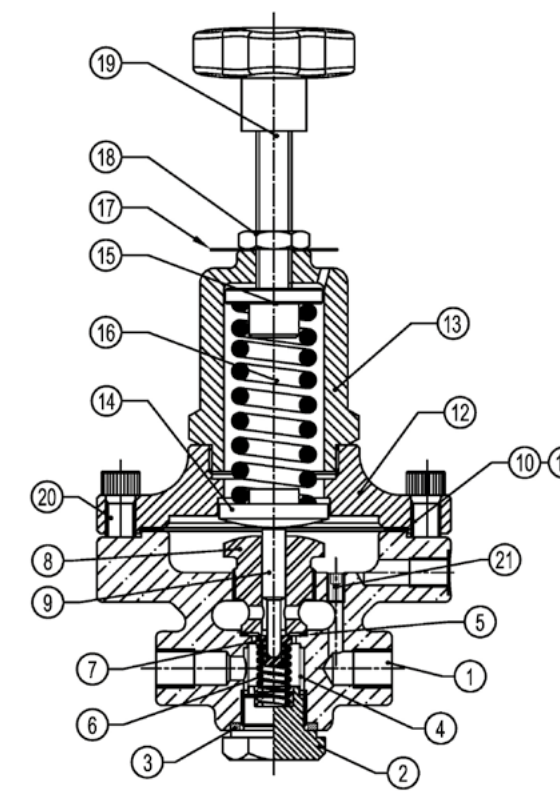
DIMENSIONS (mm)										
SIZE	A	B	C	D	E *	F	d1 **	d2 ***	d3 ***	WEIGHT (kg)
1/4"	80	63,5	185	120	195	31	1/8"	1/4"	1/4"	4,8
3/8"	80	63,5	185	120	195	31	1/8"	1/4"	1/4"	4,8

* Low pressure top (bar stock construction); ** Optional external sensing connection; *** Optional pressure gauge connections.
Remark: all optional threaded connections are supplied in accordance with the main connections.

MATERIALS		
POS. N°	DESIGNATION	MATERIAL
1	Valve body	AISI 316 / 1.4401; A351 CF8M / 1.4408
2	Plug	AISI 316 / 1.4401
3	* Gasket	Stainless steel / Graphite
4	* Strainer screen	AISI 304 / 1.4301
5	Gasket	Copper
6	* Spring	AISI 302 / 1.4300
7	* Valve head	AISI 420; EPDM; PTFE; etc.
8	* Pilot valve body	AISI 316 / 1.4401
9	* Pushrod	AISI 316 / 1.4401
10	* Diaphragm	AISI 301 / 1.4310
11	* Gasket	Stainless steel / Graphite
12	Top cover	A351 CF8 / 1.4308
13	Cover spring	A351 CF8 / 1.4308
14	Lower spring carrier	Brass
15	Upper spring carrier	Brass
16	* Adjustment spring	Spring steel
17	Spring id. plate	Aluminium
18	Locknut	Stainless steel A2-70
19	Handwheel	Plástico
20	Bolts	Stainless steel A2-70
21	Restrictor	Stainless steel A2-70

* Available spare parts.

Remarks: All valves have a serial number. In case of non-standard valves this number must be supplied if spare parts are ordered.



REGULATING RANGES				
SPRING COLOUR	GREEN w/ 1 diaphragm	BLUE w/ 1 diaphragm	RED w/ 2 diaphragms	BLACK w/ 2 diaphragms
Regulating range	0,07 to 0,5 bar * 0,35 to 2 bar	1,5 to 5,5 bar	3,5 to 8,5 bar	7 to 17 bar

* With special low pressure top assembled.

ORDERING CODES P7										
Valve model	P7SS	.	1	S	E	S	4	A	08	
P7SS – stainless steel pilot pressure reducing valve	P7SS									
Regulating range										
Green spring – 0,35 to 2 bar – single diaphragm			1							
Blue spring – 1,5 to 5,5 bar – single diaphragm			2							
Red spring – 3,5 to 8,5 bar – double diaphragm			3							
Black spring – 7 to 17 bar – double diaphragm			4							
Dome loaded – 0,35 to 4 bar – single diaphragm a)			6							
Dome loaded – 2 to 17 bar – double diaphragm a)			7							
Application										
Steam				S						
Gases				G						
Seal material b)										
Metal to metal					(1)					
EPDM					E					
PTFE					T					
FPM / Viton					V					
Diaphragm										
Standard diaphragm					S					
Low pressure diaphragm					L					
Gauge port 1/4"										
Without gauge ports					(1)					
Gauge port on the left side (relative to the flow direction)						4				
Gauge port on the right side (relative to the flow direction)						3				
Gauge ports on both sides						2				
Pipe connection										
Female threaded ISO 7 Rp								A		
Female threaded NPT ASME B1.20.1								C		
Size										
1/4"									08	
3/8"									10	
Special valves / Extras										
Full description or additional codes have to be added in case of non-standard combination.										E

(1) Omitted if a standard valve is requested.

a) The loading control pressure is approximately the same as the required downstream set-point pressure ($\pm 0,2$ bar).

b) Valve limited to the materials' maximum operating temperature. Consult manufacturer for more details.

Remarks: The external sensing connection must be requested with the order, when required.

**DIAPHRAGM SENSING PRESSURE REDUCING VALVE
PRV30SS
1/2" to 1" – DN 15 to DN 25**

DESCRIPTION

The ADCA PRV30SS is a series of direct acting, spring-loaded, diaphragm sensing and balanced plug pressure reducing valves. These regulators are designed for use with compressed air, water and other gases and liquids compatible with the construction materials and valve design. They are suitable for pressure reducing applications at the point of use in laundry and dyeing machines, food industries, sterilizers, etc.

MAIN FEATURES

Compact design.
Built-in strainer.
Balanced valve plug.
Full stainless steel construction.
Various sealing options to meet compatibility requirements.

OPTIONS: Self relieving.
Gauge connection on body.
Different soft valves for liquids and gases.
Dome-loaded version.
Top cap (adjustment screw with cover).
Degreased for oxygen application.

USE: Compressed air, water and other gases and liquids compatible with the construction.

AVAILABLE MODELS: PRV30SS – stainless steel, diaphragm sensing.

SIZES: 1/2" to 1"; DN 15 to DN 25.

CONNECTIONS: Female threaded ISO 7 Rp or NPT.
Flanged EN 1092-1 PN 40.
Flanged ASME B16.5 Class 150 or 300.

INSTALLATION: Horizontal installation.
See IMI – Installation and maintenance instructions.

CE MARKING – GROUP 2 (PED – European Directive)

PN 63	Category
1/2" to 1" – DN 15 to 25	SEP

FLOW RATE COEFFICIENTS (m³/h)

SIZE	1/2" – DN 15	3/4" – DN 20	1" – DN 25
Kvs	2,1	2,4	6,5



1/2" to 3/4" – DN 15 to DN 20



1" – DN 25



1/2" to 3/4" – DN 15 to DN 20

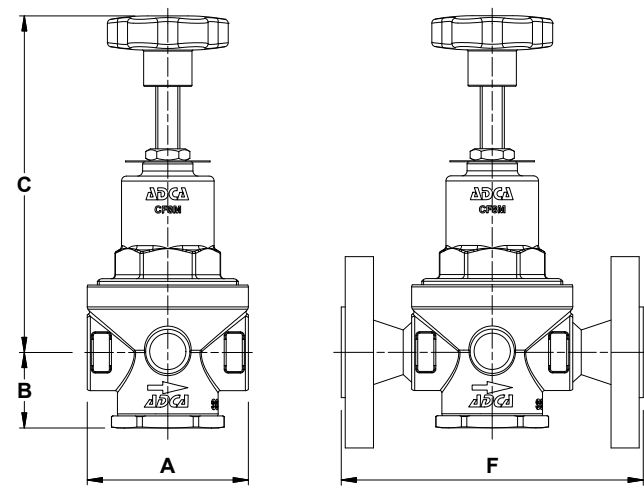
1" – DN 25



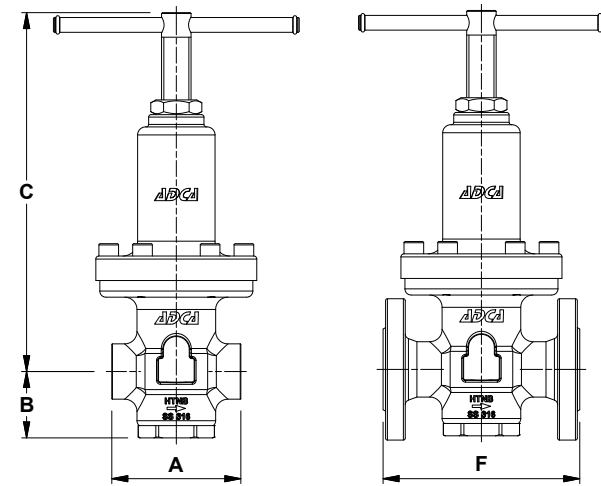
LIMITING CONDITIONS				
Valve model	PRV30SS			
Body design conditions	Cl. 150	Cl. 300	PN 40	PN 63 *
Max. upstream pressure	16 bar	40 bar	40 bar	50 bar
Max. downstream pressure	15 bar			
Min. downstream pressure	0,2 bar			
Max. design temperature	80 °C			
Max. recommended reducing ratio	40:1			
Maximum dome-loading pressure	15 bar			

* Rating PN 63 for threaded versions.

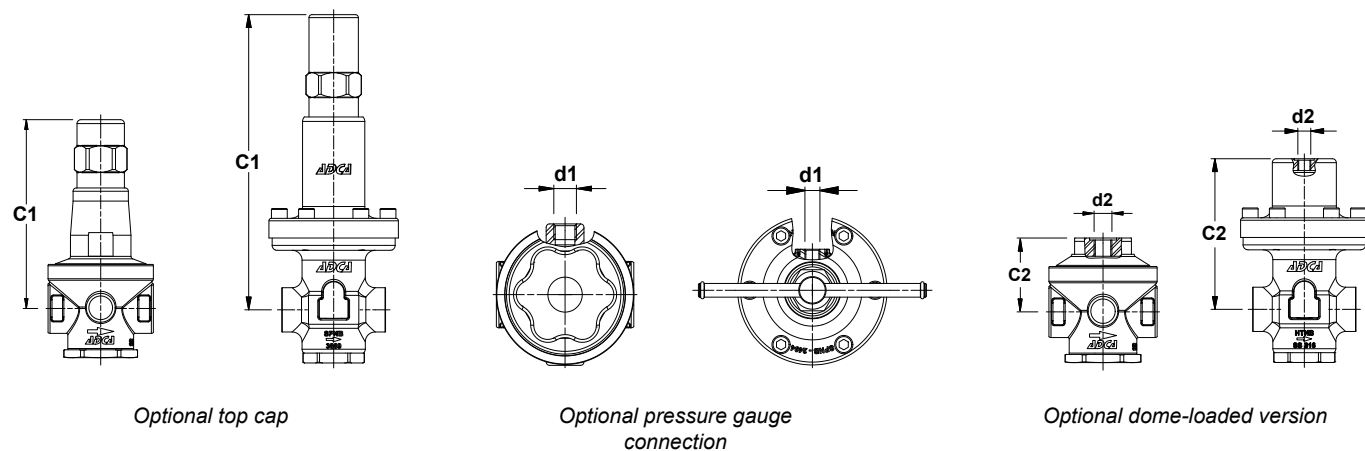
OPTIONS		
PRESSURE GAUGE	TOP CAP	DOME LOADED VERSION



1/2" to 3/4" – DN 15 to DN 20



1" – DN 25



DIMENSIONS (mm)															
SIZE	THREADED							PN 40		CLASS 150		CLASS 300			
	A	B	C	C1	d1	C2	d2	WGT. (kg)	F *	WGT. (kg)	F *	WGT. (kg)	F *	WGT. (kg)	
1/2" – DN 15	80	38	167	145	1/4"	55	1/4"	2,1	150	3,6	150	3	150	3,6	
3/4" – DN 20	80	38	167	145	1/4"	55	1/4"	2	150	4,1	150	3,4	150	4,5	
1" – DN 25	105	54	292	300	1/4"	153	1/4"	6,6	160	9,3	230	8,5	230	9,7	

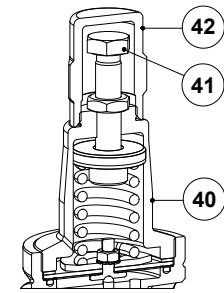
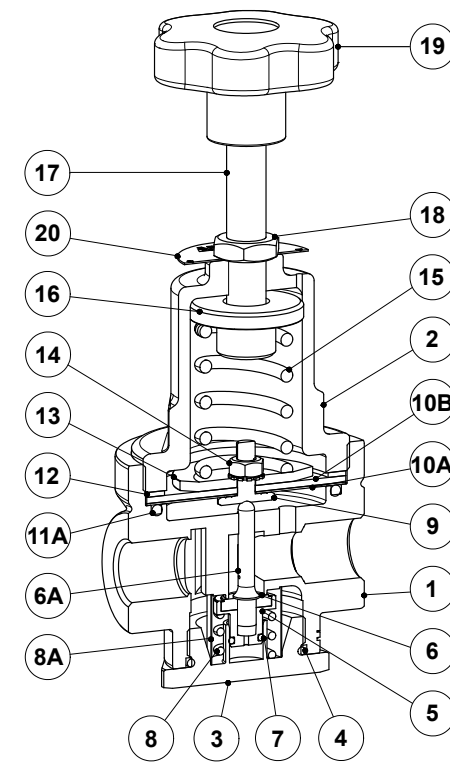
* Different face to face dimensions on request.

Remarks: As standard, in versions manufactured with EN 1092-1 flanges or ISO 7 Rp threads, connections d1 and d2 are female threaded ISO 7 Rp. In versions with ASME B16.5 flanges or NPT threads, these connections are female threaded NPT.

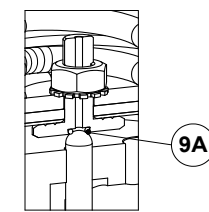


We reserve the right to change the design and material of this product without notice.

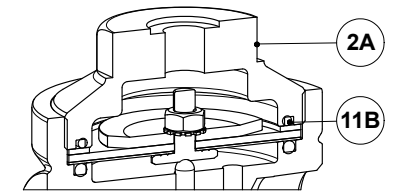
IS PRV30.015 E 00.21



Optional top cap

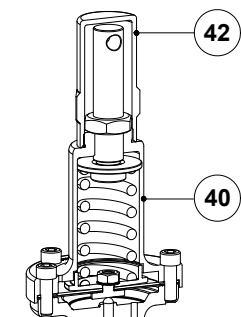
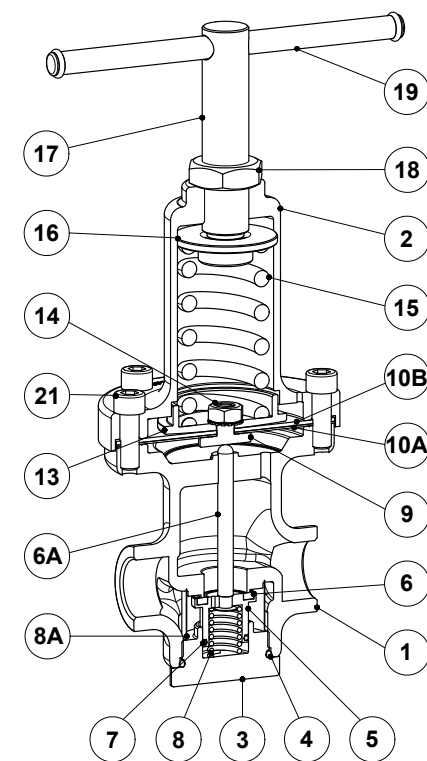


Optional relieving version

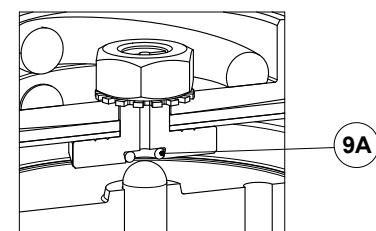


Optional dome-loaded version

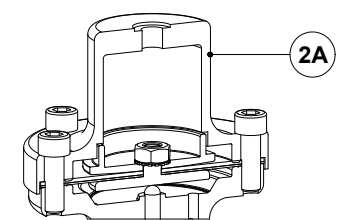
1/2" to 3/4" – DN 15 to DN 20



Optional top cap



Optional relieving version



Optional dome-loaded version

1" – DN 25



We reserve the right to change the design and material of this product without notice.

IS PRV30.015 E 00.21



MATERIALS			
POS. N°	DESIGNATION	1/2" to 3/4" – DN 15 to DN 20	1" – DN 25
1	Valve body	A351 CF8M / 1.4408	A351 CF8M / 1.4408
2	Spring cover	A351 CF8M / 1.4408	A351 CF8M / 1.4408
2A	Cover	AISI 316L / 1.4404	AISI 316L / 1.4404
3	Bottom cover	A351 CF8M / 1.4408	A351 CF8M / 1.4408
4	* O-ring	NBR; EPDM; PTFE; FPM	NBR; EPDM; PTFE; FPM
5	* Piston	AISI 316 / 1.4401	AISI 316 / 1.4401
6	* Valve head	NBR; EPDM; PTFE; FPM	NBR; EPDM; PTFE; FPM
6A	* Pushrod	AISI 316 / 1.4401	AISI 316 / 1.4401
7	* Piston o-ring	NBR; EPDM; FPM	NBR; EPDM; FPM
8	* Valve spring	AISI 302 / 1.4300	AISI 302 / 1.4300
8A	* Strainer screen	AISI 304 / 1.4301	AISI 304 / 1.4301
9	Pusher disc	AISI 304 / 1.4301	AISI 304 / 1.4301
9A	* O-ring	NBR; EPDM; FPM	NBR; EPDM; FPM
10A	* Lower diaphragm	PTFE	PTFE
10B	* Upper diaphragm	NBR	NBR
11A	* O-ring	NBR; EPDM; PTFE; FPM	–
11B	* O-ring	NBR; EPDM; PTFE; FPM	–
12	Gasket	Aluminium	–
13	Spring plate	AISI 304 / 1.4301	AISI 304 / 1.4301
14	Nut	Stainless steel A2-70	Stainless steel A2-70
15	* Adjustment spring	AISI 302 / 1.4300	AISI 302 / 1.4300
16	Top spring plate	Brass	AISI 316 / 1.4401
17	Adjustment stem	AISI 304 / 1.4301	AISI 304 / 1.4301
18	Locknut	Stainless steel A2-70	Stainless steel A2-70
19	Handwheel	Plastic	AISI 304 / 1.4301
20	Spring id. plate	Aluminium	–
21	Bolts	–	Stainless steel A2-70
40	Cover	AISI 316L / 1.4404	A351 CF8M / 1.4408
41	Adjustment screw	Stainless steel A2-70	–
42	Top cap	AISI 316L / 1.4404	AISI 316L / 1.4404

* Available spare parts.

Remark: All valves have a serial number. In case of non-standard valves this number must be supplied if spare parts are ordered.



ORDERING CODES PRV30SS													
Valve model	R30	1	W	N	C	R	4	R	A	15			
PRV30SS – diaphragm sensing pressure reducing valve	R30												
Regulating range													
N° 1 – 0,2 to 1,5 bar		1											
N° 2 – 0,3 to 3 bar		2											
N° 3 – 0,8 to 8 bar		3											
N° 4 – 1,5 to 15 bar		4											
0,2 to 15 bar (dome-loaded) a)		A											
Application													
Water			W										
Gases			G										
Oxygen (degreased)			O										
Seal material													
NBR				N									
EPDM				E									
PTFE b)				T									
FPM / Viton				V									
Maximum inlet pressure													
30 bar						C							
50 bar c)						D							
Diaphragm													
NBR / PTFE (only NBR in case of dome-loaded version)								R					
Gauge port 1/4"													
Without gauge ports										(1)			
Gauge port on the left side (relative to the flow direction)											4		
Gauge port on the right side (relative to the flow direction)												3	
Gauge ports on both sides													2
Top cap and relieving													
Non-relieving													(1)
Relieving (only for non-dangerous gases)													R
Non-relieving with top cap (adjustment screw with cover)													T
Relieving with top cap (adjustment screw with cover, only for non-dangerous gases)													V
Dome-loaded top d)													X
Pipe connection													
Female threaded ISO 7 Rp													A
Female threaded NPT ASME B1.20.1													C
Flanged EN 1092-1 PN 40													N
Flanged ASME B16.5 Class 150													U
Flanged ASME B16.5 Class 300													V
Size													
1/2" or DN 15													15
3/4" or DN 20													20
1" or DN 25													25
Special valves / Extras													
Full description or additional codes have to be added in case of non-standard combination.													E

(1) Omitted if a standard valve is requested.

a) The loading control pressure can be up to a maximum of 1,2 bar above the required downstream pressure.

b) All seals except piston o-ring, which is supplied in FPM/Viton or others on request.

c) Only available with spring n° 4.

d) This option must be chosen in case of dome-loaded version.

DIAPHRAGM SENSING PRESSURE REDUCING VALVE PRV30SS 1" to 2" – DN 25 to DN 50

DESCRIPTION

The ADCA PRV30SS is a series of direct acting, spring-loaded, diaphragm sensing and balanced plug pressure reducing valves. These regulators are designed for use with compressed air, water and other gases and liquids compatible with the construction materials and valve design. They are suitable for pressure reducing applications at the point of use in laundry and dyeing machines, food industries, sterilizers, etc.

MAIN FEATURES

- Compact design.
- Built-in strainer.
- Balanced valve plug.
- Full stainless steel construction.
- Various sealing options to meet compatibility requirements.

- OPTIONS:**
- Self relieving.
 - Gauge connection on body.
 - Different soft valves for liquids and gases.
 - Dome-loaded version.
 - Top cap (adjustment screw with cover).
 - Degreased for oxygen application.

USE: Compressed air, water and other gases and liquids compatible with the construction.

AVAILABLE MODELS: PRV30SS – stainless steel, diaphragm sensing.

SIZES: 1" to 2"; DN 25 to DN 50.

CONNECTIONS: Female threaded ISO 7 Rp or NPT (only available from 1 1/4" to 2").
Flanged EN 1092-1 PN 40 (only available from DN 32 to DN 50) or PN 63.
Flanged ASME B16.5 Class 150 or 300 (only available from 1 1/4" to 2") or Class 600.

INSTALLATION: Horizontal installation.
See IMI – Installation and maintenance instructions.



1" to 1 1/4" – DN 25 to DN 32



1 1/2" to 2" – DN 40 to DN 50



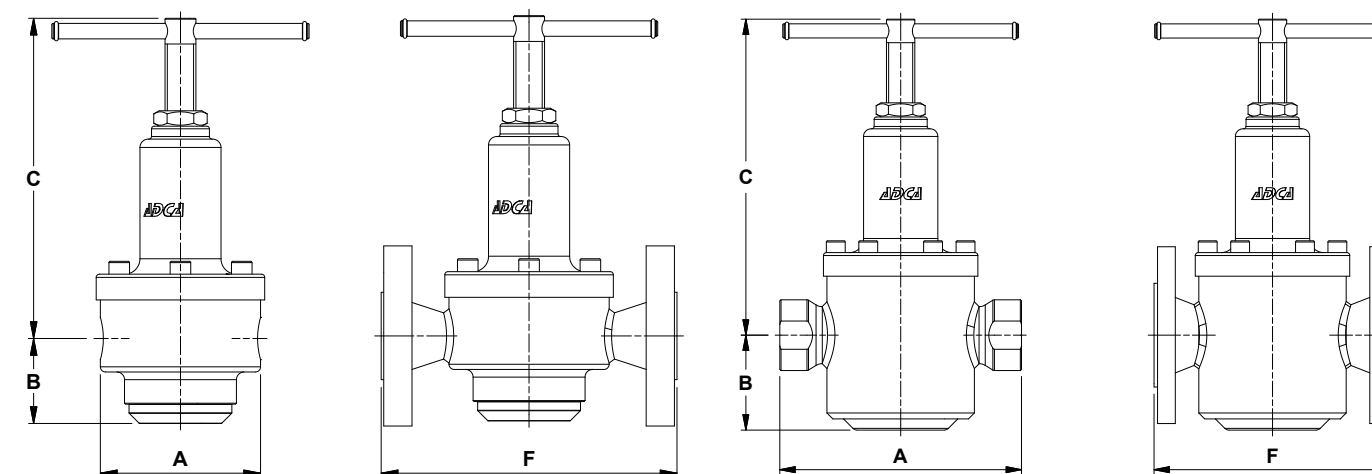
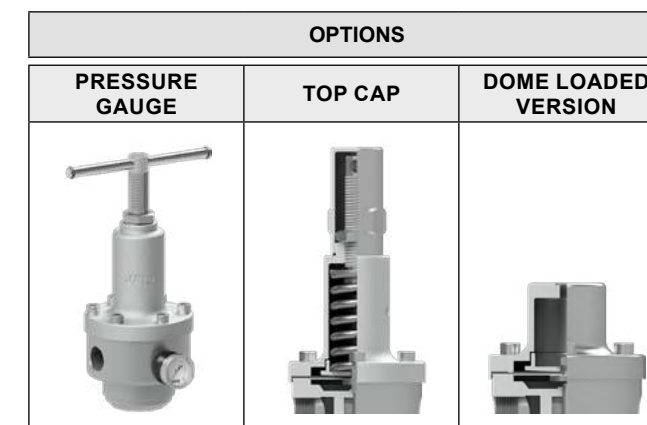
1" to 1 1/4" – DN 25 to DN 32 1 1/2" to 2" – DN 40 to DN 50

CE MARKING – GROUP 2 (PED – European Directive)	
PN 63	Category
1" to 2" – DN 25 to 50	SEP

FLOW RATE COEFFICIENTS (m³/h)				
SIZE	1" – DN 25	1 1/4" – DN 32	1 1/2" – DN 40	2" – DN 50
Kvs	6,5	7,2	12,7	13,7

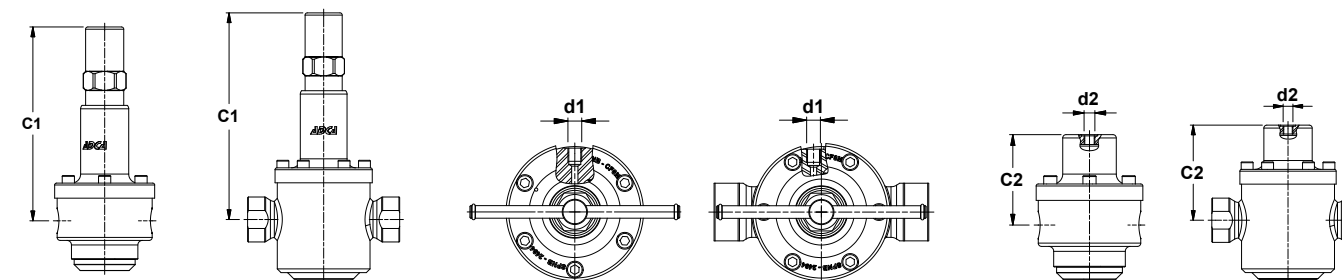
LIMITING CONDITIONS					
Valve model	PRV30SS				
Body design conditions	Cl. 150	Cl. 300	Cl. 600	PN 40	PN 63 *
Max. upstream pressure	16 bar	40 bar	50 bar	40 bar	50 bar
Max. downstream pressure	15 bar				
Min. downstream pressure	0,2 bar				
Max. design temperature	80 °C				
Max. recommended reducing ratio	40:1				
Maximum dome-loading pressure	15 bar				

* Rating PN 63 for threaded versions.



1" to 1 1/4" – DN 25 to DN 32

1 1/2" to 2" – DN 40 to DN 50



Optional top cap

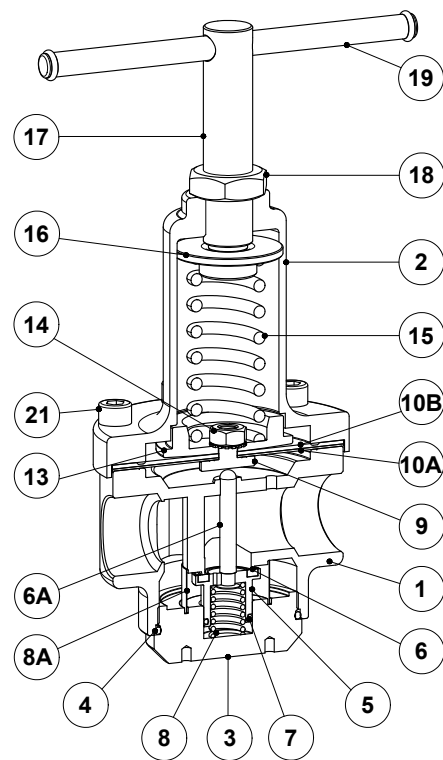
Optional pressure gauge connection

Optional dome-loaded version

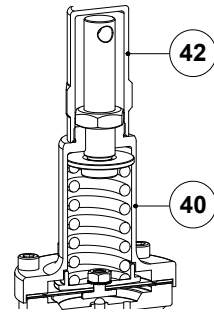
DIMENSIONS (mm)																		
SIZE	THREADED								PN 40		PN 63		CLASS 150		CLASS 300		CLASS 600	
	A	B	C	C1	d1	C2	d2	WGT. (kg)	F *	WGT. (kg)	F *	WGT. (kg)	F *	WGT. (kg)	F *	WGT. (kg)	F *	WGT. (kg)
1" – DN 25 **	125	66	249	257	1/4"	110	1/4"	–	–	–	230	14,1	–	–	–	–	230	12,5
1 1/4" – DN 32	125	66	249	257	1/4"	110	1/4"	8,7	260	12,6	260	14,9	260	11,7	260	12,8	260	13,6
1 1/2" – DN 40	205	81	268	276	1/4"	129	1/4"	12,4	201	16,3	260	20,1	235	15,9	248	18,1	264	19,2
2" – DN 50	205	75	274	270	1/4"	123	1/4"	13,2	230	18,2	300	21,3	254	16,7	267	18,6	300	21

* Different face to face dimensions on request; ** Only available with PN 63 and Class 600 flanged connections.

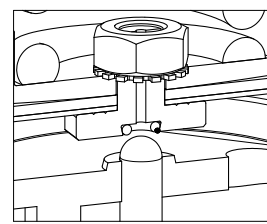
Remarks: As standard, in versions manufactured with EN 1092-1 flanges or ISO 7 Rp threads, connections d1 and d2 are female threaded ISO 7 Rp. In versions with ASME B16.5 flanges or NPT threads, these connections are female threaded NPT.



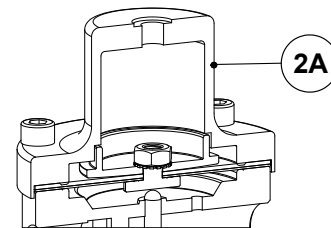
1" to 1 1/4" – DN 25 to DN 32



Optional top cap



Optional relieving version

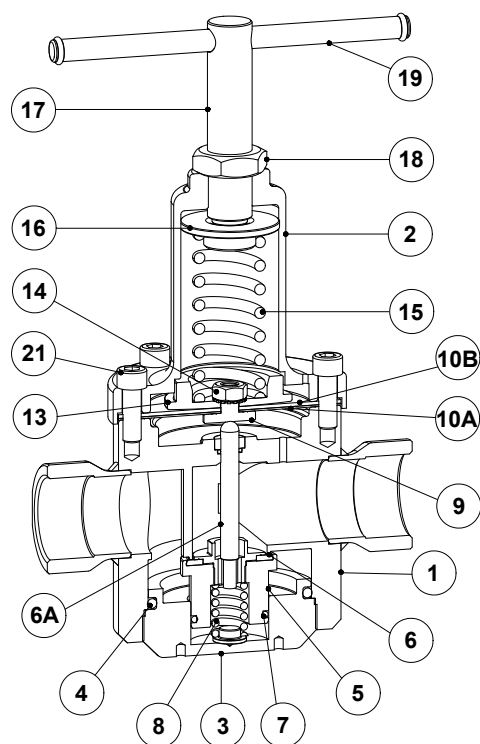


Optional dome-loaded version

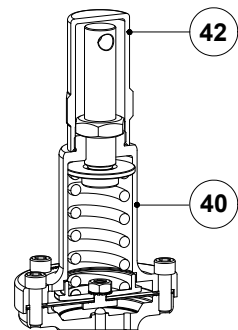
MATERIALS			
POS. N°	DESIGNATION	1" to 1 1/4" – DN 25 to DN 32	1 1/2" to 2" – DN 40 to DN 50
1	Valve body	AISI 316 / 1.4401	AISI 316 / 1.4401
2	Spring cover	A351 CF8M / 1.4408	A351 CF8M / 1.4408
2A	Cover	AISI 316 / 1.4401	AISI 316 / 1.4401
3	Bottom cover	AISI 316 / 1.4401	AISI 316 / 1.4401
4	* O-ring	NBR; EPDM; PTFE; FPM	NBR; EPDM; PTFE; FPM
5	* Piston	AISI 316 / 1.4401	AISI 316 / 1.4401
6	* Valve head	NBR; EPDM; PTFE; FPM	NBR; EPDM; PTFE; FPM
6A	* Pushrod	AISI 316 / 1.4401	AISI 316 / 1.4401
7	* Piston o-ring	NBR; EPDM; FPM	NBR; EPDM; FPM
8	* Valve spring	AISI 302 / 1.4300	AISI 302 / 1.4300
8A	* Strainer screen	AISI 304 / 1.4301	–
9	Pusher disc	AISI 304 / 1.4301	AISI 304 / 1.4301
9A	* O-ring	NBR; EPDM; FPM	NBR; EPDM; FPM
10A	* Lower diaphragm	PTFE	PTFE
10B	* Upper diaphragm	NBR	NBR
13	Spring plate	AISI 304 / 1.4301	AISI 304 / 1.4301
14	Nut	Stainless steel A2-70	Stainless steel A2-70
15	* Adjustment spring	AISI 302 / 1.4300	AISI 302 / 1.4300
16	Top spring plate	Brass	Brass
17	Adjustment stem	AISI 304 / 1.4301	AISI 304 / 1.4301
18	Locknut	Stainless steel A2-70	Stainless steel A2-70
19	Handwheel	AISI 304 / 1.4301	AISI 304 / 1.4301
21	Bolts	Stainless steel A2-70	Stainless steel A2-70
40	Cover	AISI 316L / 1.4404	A351 CF8M / 1.4408
42	Top cap	AISI 316L / 1.4404	AISI 316L / 1.4404

* Available spare parts.

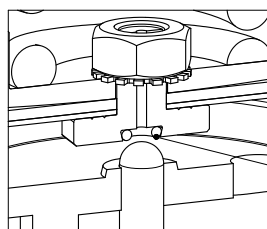
Remark: All valves have a serial number. In case of non-standard valves this number must be supplied if spare parts are ordered.



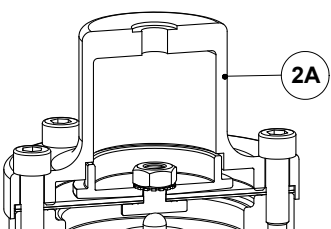
1 1/2" to 2" – DN 40 to DN 50



Optional top cap



Optional relieving version



Optional dome-loaded version

ORDERING CODES PRV30SS												
Valve model	R30	1	W	N	C	R	4	R	A	32		
PRV30SS – diaphragm sensing pressure reducing valve	R30											
Regulating range												
N° 1 – 0,2 to 1,5 bar		1										
N° 2 – 0,3 to 3 bar		2										
N° 3 – 0,8 to 8 bar		3										
N° 4 – 1,5 to 15 bar		4										
0,2 to 15 bar (dome-loaded) a)		A										
Application												
Water			W									
Gases			G									
Oxygen (degreased)			O									
Seal material												
NBR				N								
EPDM				E								
PTFE b)				T								
FPM / Viton				V								
Maximum inlet pressure												
30 bar						C						
50 bar c)						D						
Diaphragm												
NBR / PTFE (only NBR in case of dome-loaded version)							R					
Gauge port 1/4"												
Without gauge ports										(1)		
Gauge port on the left side (relative to the flow direction)											4	
Gauge port on the right side (relative to the flow direction)											3	
Gauge ports on both sides											2	
Top cap and relieving												
Non-relieving											(1)	
Relieving (only for non-dangerous gases)											R	
Non-relieving with top cap (adjustment screw with cover)											T	
Relieving with top cap (adjustment screw with cover, only for non-dangerous gases)											V	
Dome-loaded top d)											X	
Pipe connection												
Female threaded ISO 7 Rp												A
Female threaded NPT ASME B1.20.1												C
Flanged EN 1092-1 PN 40												N
Flanged EN 1092-1 PN 63												O
Flanged ASME B16.5 Class 150												U
Flanged ASME B16.5 Class 300												V
Flanged ASME B16.5 Class 600												W
Size												
1" or DN 25 (only available with PN 63 and Class 600 flanged connections)												25
1 1/4" or DN 32												32
1 1/2" or DN 40												40
2" or DN 50												50
Special valves / Extras												
Full description or additional codes have to be added in case of non-standard combination.												E

- (1) Omitted if a standard valve is requested.
a) The loading control pressure can be up to a maximum of 1,2 bar above the required downstream pressure.
b) All seals except piston o-ring, which is supplied in FPM/Viton or others on request.
c) Only available with spring n° 4.
d) This option must be chosen in case of dome-loaded version.

**PISTON SENSING PRESSURE REDUCING VALVE
PRV31SS
1/2" to 1" – DN 15 to DN 25**

DESCRIPTION

The ADCA PRV31SS is a series of direct acting, spring-loaded, piston sensing and balanced plug pressure reducing valves. These regulators are designed for use with compressed air, water and other gases and liquids compatible with the construction materials and valve design. They are suitable for pressure reducing applications at the point of use in laundry and dyeing machines, food industries, sterilizers, etc.

MAIN FEATURES

Compact design.
Built-in strainer.
Balanced valve plug.
Full stainless steel construction.
Various sealing options to meet compatibility requirements.

OPTIONS:

Self relieving.
Gauge connection on body.
Different soft valves for liquids and gases.
Top cap (adjustment screw with cover).
Degreased for oxygen application.

USE:

Compressed air, water and other gases and liquids compatible with the construction.

AVAILABLE MODELS:

PRV31SS – stainless steel, piston sensing.

SIZES:

1/2" to 1"; DN 15 to DN 25.

CONNECTIONS:

Female threaded ISO 7 Rp or NPT.
Flanged EN 1092-1 PN 40.
Flanged ASME B16.5 Class 150 or 300.

INSTALLATION:

Horizontal installation.
See IMI – Installation and maintenance instructions.

CE MARKING – GROUP 2 (PED – European Directive)

PN 63	Category
1/2" to 1" – DN 15 to 25	SEP

FLOW RATE COEFFICIENTS (m³/h)

SIZE	1/2" – DN 15	3/4" – DN 20	1" – DN 25
Kvs	3	3,5	7,5



1/2" to 3/4" – DN 15 to DN 20



1" – DN 25



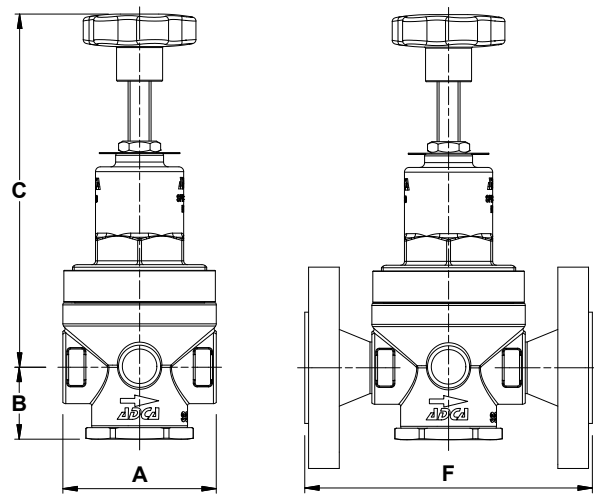
1/2" to 3/4" – DN 15 to DN 20

1" – DN 25

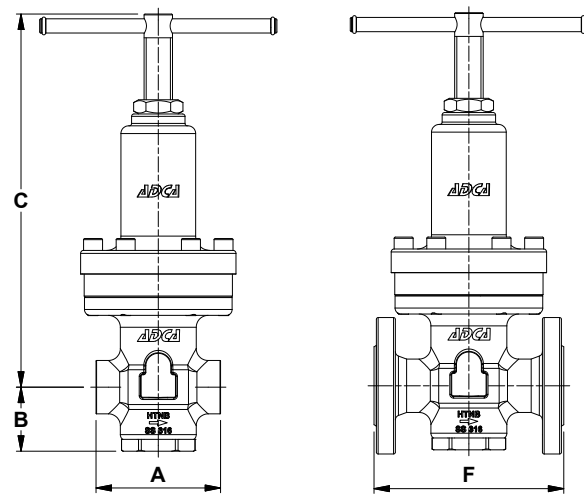
LIMITING CONDITIONS				
Valve model	PRV31SS			
Body design conditions	Cl. 150	Cl. 300	PN 40	PN 63 *
Max. upstream pressure	16 bar	40 bar	40 bar	50 bar
Max. downstream pressure	50 bar			
Min. downstream pressure	3 bar			
Max. design temperature	80 °C			
Max. recommended reducing ratio	40:1			

* Rating PN 63 for threaded versions.

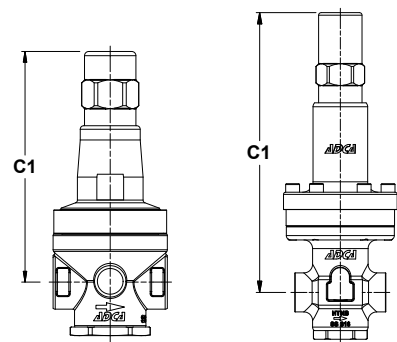
OPTIONS	
PRESSURE GAUGE	TOP CAP
	



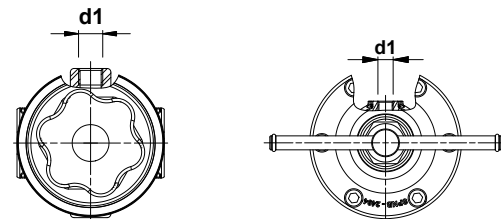
1/2" to 3/4" – DN 15 to DN 20



1" – DN 25



Optional top cap

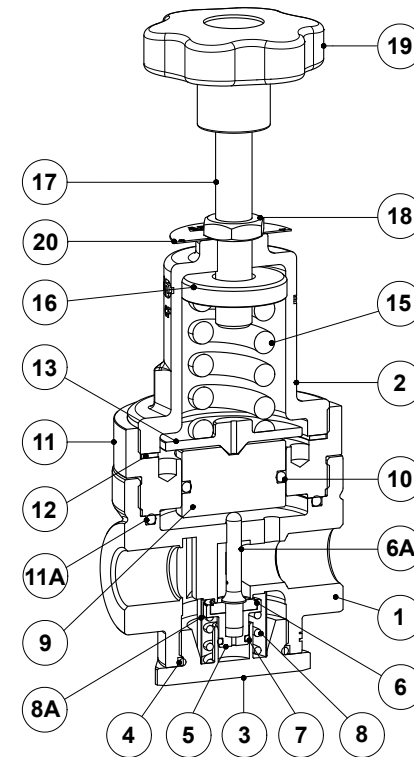


Optional pressure gauge connection

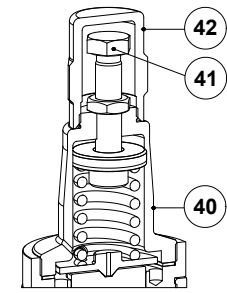
DIMENSIONS (mm)													
SIZE	THREADED					d1	WEIGHT (kg)	PN 40		CLASS 150		CLASS 300	
	A	B	C	C1	F *			WEIGHT (kg)	F **	WEIGHT (kg)	F *	WEIGHT (kg)	
1/2" – DN 15	80	38	184	162	1/4"	2,8	150	4,9	150	4,2	150	5,2	
3/4" – DN 20	80	38	184	162	1/4"	2,7	150	5,4	150	4,6	150	5,6	
1" – DN 25	105	54	315	322	1/4"	9,2	160	11,8	230	11,1	230	12,2	

* Different face to face dimensions on request.

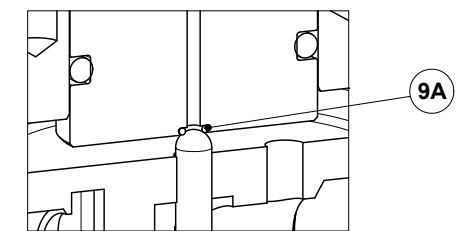
Remarks: As standard, in versions manufactured with EN 1092-1 flanges or ISO 7 Rp threads, connection d1 is female threaded ISO 7 Rp. In versions with ASME B16.5 flanges or NPT threads, this connection is female threaded NPT.



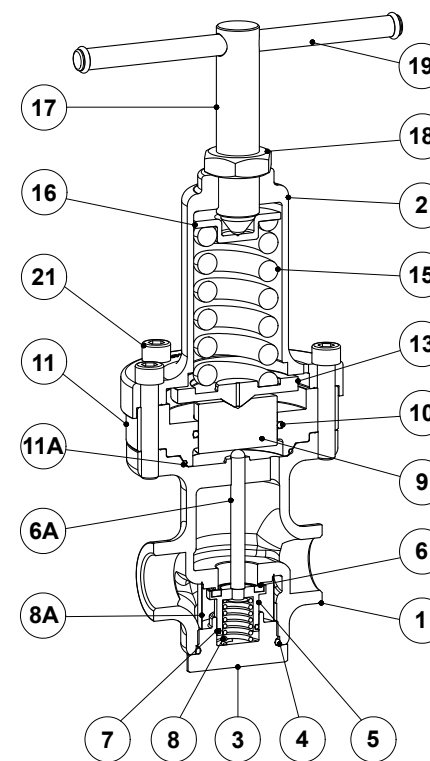
1/2" to 3/4" – DN 15 to DN 20



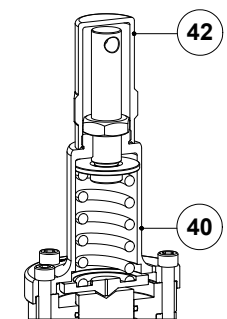
Optional top cap



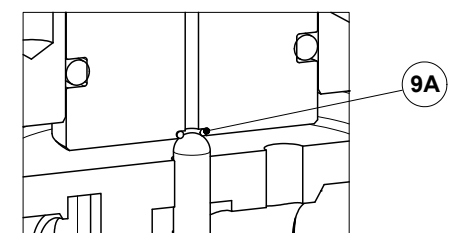
Optional relieving version



1" – DN 25



Optional top cap



Optional relieving version



MATERIALS			
POS. N°	DESIGNATION	1/2" to 3/4" – DN 15 to DN 20	1" – DN 25
1	Valve body	A351 CF8M / 1.4408	A351 CF8M / 1.4408
2	Spring cover	A351 CF8M / 1.4408	A351 CF8M / 1.4408
3	Bottom cover	A351 CF8M / 1.4408	A351 CF8M / 1.4408
4	* O-ring	NBR; EPDM; PTFE; FPM	NBR; EPDM; PTFE; FPM
5	* Piston	AISI 316 / 1.4401	AISI 316 / 1.4401
6	* Valve head	NBR; EPDM; PTFE; FPM	NBR; EPDM; PTFE; FPM
6A	* Pushrod	AISI 316 / 1.4401	AISI 316 / 1.4401
7	* Piston o-ring	NBR; EPDM; FPM	NBR; EPDM; FPM
8	* Valve spring	AISI 302 / 1.4300	AISI 302 / 1.4300
8A	* Strainer screen	AISI 304 / 1.4301	AISI 304 / 1.4301
9	Piston	AISI 304 / 1.4301	AISI 304 / 1.4301
9A	* O-ring	NBR; EPDM; FPM	NBR; EPDM; FPM
10	* O-ring	NBR; EPDM; FPM	NBR; EPDM; FPM
11	Piston sleeve	AISI 316 / 1.4401	AISI 316 / 1.4401
11A	* O-ring	NBR; EPDM; PTFE; FPM	NBR; EPDM; PTFE; FPM
12	Gasket	Aluminium	–
13	Spring plate	AISI 304 / 1.4301	AISI 304 / 1.4301
15	* Adjustment spring	AISI 302 / 1.4300	AISI 302 / 1.4300
16	Top spring plate	Brass	AISI 316 / 1.4401
17	Adjustment stem	AISI 304 / 1.4301	AISI 304 / 1.4301
18	Locknut	Stainless steel A2-70	Stainless steel A2-70
19	Handwheel	Plastic	AISI 304 / 1.4301
20	Spring id. plate	Aluminium	–
21	Bolts	–	Stainless steel A2-70
40	Cover	AISI 316L / 1.4404	A351 CF8M / 1.4408
41	Adjustment screw	Stainless steel A2-70	–
42	Top cap	AISI 316L / 1.4404	AISI 316L / 1.4404

* Available spare parts.
Remark: All valves have a serial number. In case of non-standard valves this number must be supplied if spare parts are ordered.



ORDERING CODES PRV31SS												
Valve model	R31	.	5	W	N	C	4	R	.	A	15	
PRV31SS – piston sensing pressure reducing valve	R31											
Regulating range												
N° 5 - 3 to 30 bar			5									
N° 6 - 5 to 50 bar			6									
Application												
Water				W								
Gases				G								
Oxygen (degreased)				O								
Seal material												
NBR					N							
EPDM					E							
PTFE a)					T							
FPM / Viton					V							
Maximum inlet pressure												
30 bar										C		
50 bar										D		
Gauge port 1/4"												
Without gauge ports											(1)	
Gauge port on the left side (relative to the flow direction)											4	
Gauge port on the right side (relative to the flow direction)											3	
Gauge ports on both sides											2	
Top cap and relieving												
Non-relieving											(1)	
Relieving (only for non-dangerous gases)											R	
Non-relieving with top cap (adjustment screw with cover)											T	
Relieving with top cap (adjustment screw with cover, only for non-dangerous gases)											V	
Pipe connection												
Female threaded ISO 7 Rp												A
Female threaded NPT ASME B1.20.1												C
Flanged EN 1092-1 PN 40												N
Flanged ASME B16.5 Class 150												U
Flanged ASME B16.5 Class 300												V
Size												
1/2" or DN 15												15
3/4" or DN 20												20
1" or DN 25												25
Special valves / Extras												
Full description or additional codes have to be added in case of non-standard combination.												E

(1) Omitted if a standard valve is requested.

a) All seals except piston o-rings, which are supplied in FPM/Viton or others on request.

**PISTON SENSING PRESSURE REDUCING VALVE
PRV31SS
1" to 2" – DN 25 to DN 50**

DESCRIPTION

The ADCA PRV31SS is a series of direct acting, spring-loaded, piston sensing and balanced plug pressure reducing valves. These regulators are designed for use with compressed air, water and other gases and liquids compatible with the construction materials and valve design. They are suitable for pressure reducing applications at the point of use in laundry and dyeing machines, food industries, sterilizers, etc.

MAIN FEATURES

- Compact design.
- Built-in strainer.
- Balanced valve plug.
- Full stainless steel construction.
- Various sealing options to meet compatibility requirements.

- OPTIONS:**
- Self relieving.
 - Gauge connection on body.
 - Different soft valves for liquids and gases.
 - Top cap (adjustment screw with cover).
 - Degreased for oxygen application.

USE: Compressed air, water and other gases and liquids compatible with the construction.

AVAILABLE MODELS: PRV31SS – stainless steel, piston sensing.

SIZES: 1" to 2"; DN 25 to DN 50.

CONNECTIONS: Female threaded ISO 7 Rp or NPT.
Flanged EN 1092-1 PN 40.
Flanged ASME B16.5 Class 150 or 300.

INSTALLATION: Horizontal installation.
See IMI – Installation and maintenance instructions.



1" to 1 1/4" – DN 25 to DN 32



1 1/2" to 2" – DN 40 to DN 50



1" to 1 1/4" – DN 25 to DN 32 1 1/2" to 2" – DN 40 to DN 50

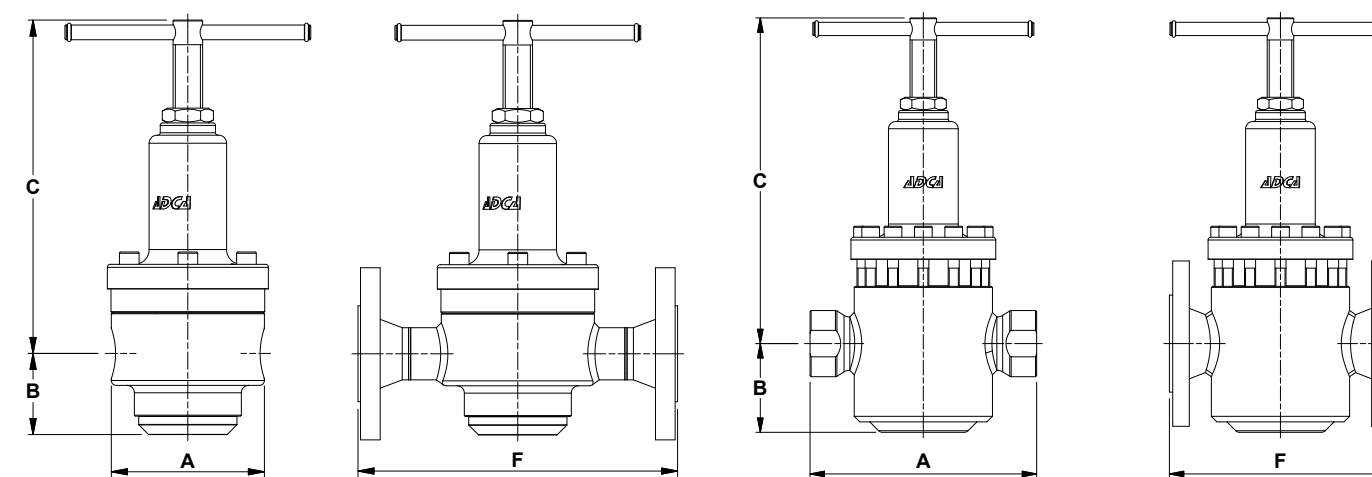
CE MARKING – GROUP 2 (PED – European Directive)	
PN 63	Category
1" to 2" – DN 25 to 50	SEP

FLOW RATE COEFFICIENTS (m³/h)				
SIZE	1" – DN 25	1 1/4" – DN 32	1 1/2" – DN 40	2" – DN 50
Kvs	7,5	8,2	14,4	15,4

LIMITING CONDITIONS					
Valve model	PRV31SS				
Body design conditions	Cl. 150	Cl. 300	Cl. 600	PN 40	PN 63 *
Max. upstream pressure	16 bar	40 bar	50 bar	40 bar	50 bar
Max. downstream pressure	50 bar				
Min. downstream pressure	3 bar				
Max. design temperature	80 °C				
Max. recommended reducing ratio	40:1				

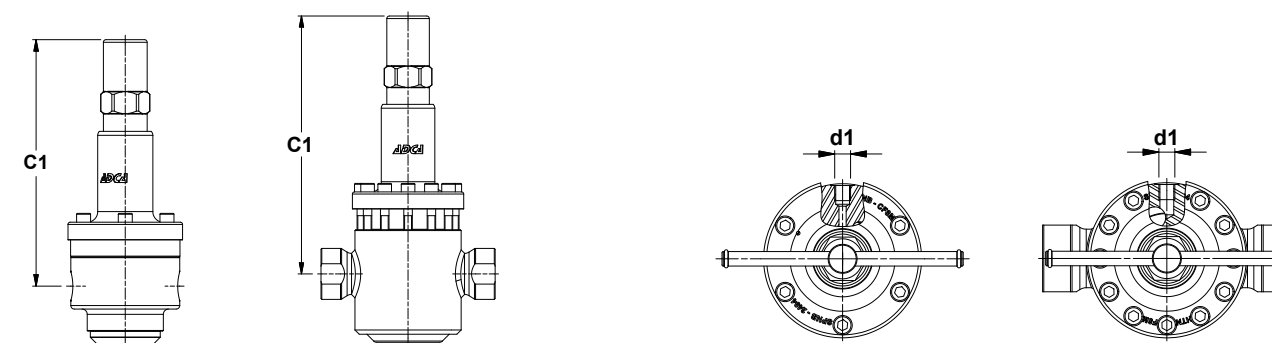
* Rating PN 63 for threaded versions.

OPTIONS	
PRESSURE GAUGE	TOP CAP



1" to 1 1/4" – DN 25 to DN 32

1 1/2" to 2" – DN 40 to DN 50



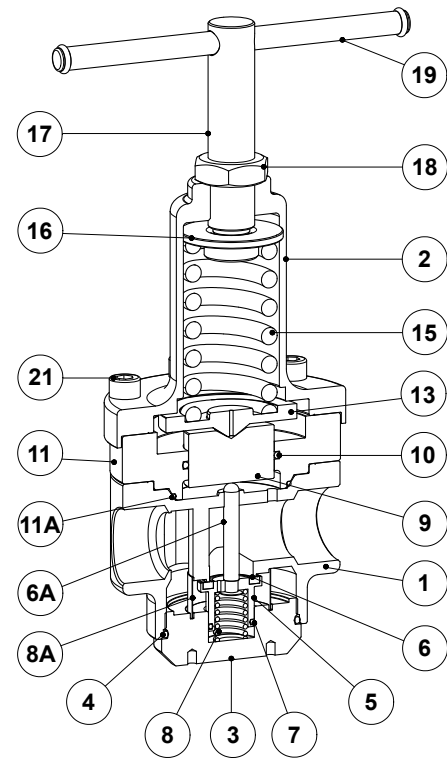
Optional top cap

Optional pressure gauge connection

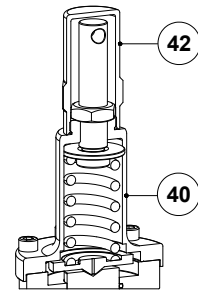
DIMENSIONS (mm)																
SIZE	THREADED						PN 40		PN 63		CLASS 150		CLASS 300		CLASS 600	
	A	B	C	C1	d1	WGT. (kg)	F *	WGT. (kg)	F *	WGT. (kg)	F *	WGT. (kg)	F *	WGT. (kg)	F *	WGT. (kg)
1" – DN 25 **	125	66	271	280	1/4"	–	–	–	230	16,3	–	–	–	–	230	14,7
1 1/4" – DN 32	125	66	271	280	1/4"	11	260	14,9	260	17,2	260	14	260	15,1	260	15,9
1 1/2" – DN 40	205	81	296	304	1/4"	14,7	201	18,3	260	22,3	235	18	248	20,2	264	21,2
2" – DN 50	205	75	302	310	1/4"	15,3	230	20,3	300	23,5	254	19	267	20,7	300	23,2

* Different face to face dimensions on request; ** Only available with PN 63 and Class 600 flanged connections.

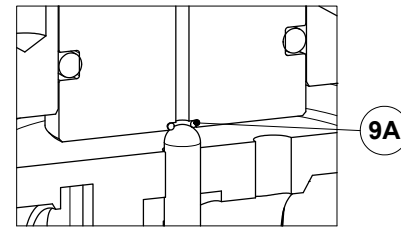
Remarks: As standard, in versions manufactured with EN 1092-1 flanges or ISO 7 Rp threads, connection d1 is female threaded ISO 7 Rp. In versions with ASME B16.5 flanges or NPT threads, this connection is female threaded NPT.



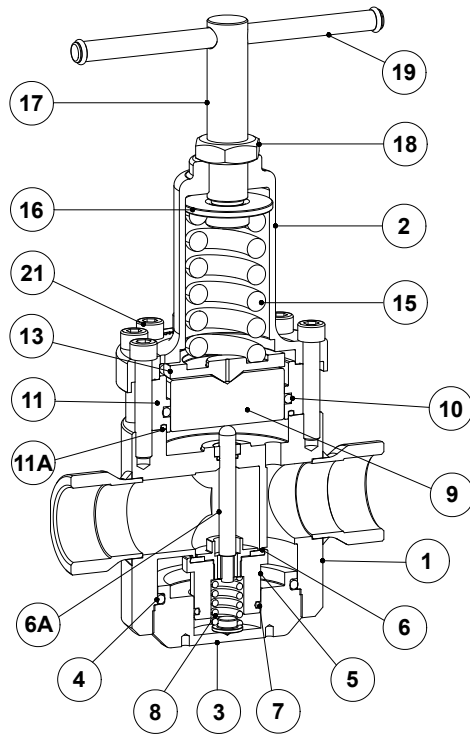
1" to 1 1/4" – DN 25 to DN 32



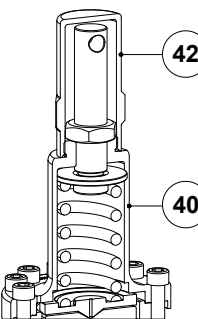
Optional top cap



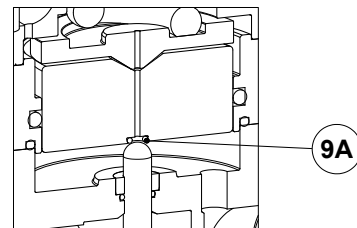
Optional relieving version



1 1/2" to 2" – DN 40 to DN 50



Optional top cap



Optional relieving version

MATERIALS			
POS. N°	DESIGNATION	1" to 1 1/4" – DN 25 to DN 32	1 1/2" to 2" – DN 40 to DN 50
1	Valve body	AISI 316 / 1.4401	AISI 316 / 1.4401
2	Spring cover	A351 CF8M / 1.4408	A351 CF8M / 1.4408
3	Bottom cover	AISI 316 / 1.4401	AISI 316 / 1.4401
4	* O-ring	NBR; EPDM; PTFE; FPM	NBR; EPDM; PTFE; FPM
5	* Piston	AISI 316 / 1.4401	AISI 316 / 1.4401
6	* Valve head	NBR; EPDM; PTFE; FPM	NBR; EPDM; PTFE; FPM
6A	* Pushrod	AISI 316 / 1.4401	AISI 316 / 1.4401
7	* Piston o-ring	NBR; EPDM; FPM	NBR; EPDM; FPM
8	* Valve spring	AISI 302 / 1.4300	AISI 302 / 1.4300
8A	* Strainer screen	AISI 304 / 1.4301	–
9	* Piston	AISI 316 / 1.4401	AISI 316 / 1.4401
9A	* O-ring	NBR; EPDM; FPM	NBR; EPDM; FPM
10	* O-ring	NBR; EPDM; FPM	NBR; EPDM; FPM
11	Piston sleeve	AISI 316 / 1.4401	AISI 316 / 1.4401
11A	* O-ring	NBR; EPDM; PTFE; FPM	NBR; EPDM; PTFE; FPM
13	Spring plate	AISI 304 / 1.4301	AISI 304 / 1.4301
15	* Adjustment spring	AISI 302 / 1.4300	AISI 302 / 1.4300
16	Top spring plate	Brass	Brass
17	Adjustment stem	AISI 304 / 1.4301	AISI 304 / 1.4301
18	Locknut	Stainless steel A2-70	Stainless steel A2-70
19	Handwheel	AISI 304 / 1.4301	AISI 304 / 1.4301
21	Bolts	Stainless steel A2-70	Stainless steel A2-70
40	Cover	AISI 316L / 1.4404	A351 CF8M / 1.4408
42	Top cap	AISI 316L / 1.4404	AISI 316L / 1.4404

* Available spare parts.

Remark: All valves have a serial number. In case of non-standard valves this number must be supplied if spare parts are ordered.

ORDERING CODES PRV31SS												
Valve model	R31	.	5	W	N	C	4	R	.	A	15	
PRV31SS – piston sensing pressure reducing valve	R31											
Regulating range												
N° 5 - 3 to 30 bar			5									
N° 6 - 5 to 50 bar b)			6									
Application												
Water				W								
Gases				G								
Oxygen (degreased)				O								
Seal material												
NBR					N							
EPDM					E							
PTFE a)					T							
FPM / Viton					V							
Maximum inlet pressure												
30 bar						C						
50 bar b)						D						
Gauge port 1/4"												
Without gauge ports							(1)					
Gauge port on the left side (relative to the flow direction)							4					
Gauge port on the right side (relative to the flow direction)							3					
Gauge ports on both sides							2					
Top cap and relieving												
Non-relieving							(1)					
Relieving (only for non-dangerous gases)							R					
Non-relieving with top cap (adjustment screw with cover)							T					
Relieving with top cap (adjustment screw with cover, only for non-dangerous gases)							V					
Pipe connection												
Female threaded ISO 7 Rp										A		
Female threaded NPT ASME B1.20.1										C		
Flanged EN 1092-1 PN 40										N		
Flanged EN 1092-1 PN 63										O		
Flanged ASME B16.5 Class 150										U		
Flanged ASME B16.5 Class 300										V		
Flanged ASME B16.5 Class 600										W		
Size												
1" or DN 25 (only available with PN 63 and Class 600 flanged connections)												25
1 1/4" or DN 32												32
1 1/2" or DN 40												40
2" or DN 50												50
Special valves / Extras												
Full description or additional codes have to be added in case of non-standard combination.												E

(1) Omitted if a standard valve is requested.

a) All seals except piston o-rings, which are supplied in FPM/Viton or others on request.

b) Not applicable to sizes 1 1/4" and DN32.

**PISTON SENSING PRESSURE REDUCING VALVES
PRV41SS**

DESCRIPTION

The ADCA PRV41SS is a series of direct acting, spring loaded, piston sensing pressure reducing valves.

These regulators are designed for use with nitrogen, compressed air, water and other gases and liquids compatible with the materials of construction.

They are suitable for general purpose pressure reducing applications such as instrumentation systems and industrial equipment where small loads and high pressures are involved.

MAIN FEATURES

Compact design.
Balanced valve plug.
Completely machined from solid bar stock material.

OPTIONS: Gauge connection on body.
Different soft valves for liquids and gases.
Top cap (adjustment screw with cover).
Degreased for oxygen application.
Self relieving.

USE: Compressed air, water and other gases and liquids compatible with the construction.

AVAILABLE MODELS: PRV41SS – stainless steel, piston sensing.

SIZES: 1/4" to 3/4"; DN 15 and DN 20.

CONNECTIONS: Female threaded ISO 7 Rp, ISO 228 or NPT.
Flanged EN 1092-1 PN 40 to PN 250.
Flanged ASME B16.5 Class 150, 300 or 600.

INSTALLATION: Horizontal or vertical installation.
See IMI – Installation and maintenance instructions.



CE MARKING – GROUP 2 (PED – European Directive)



PN 320	Category
1/4" to 3/4" – DN 15 and 20	SEP

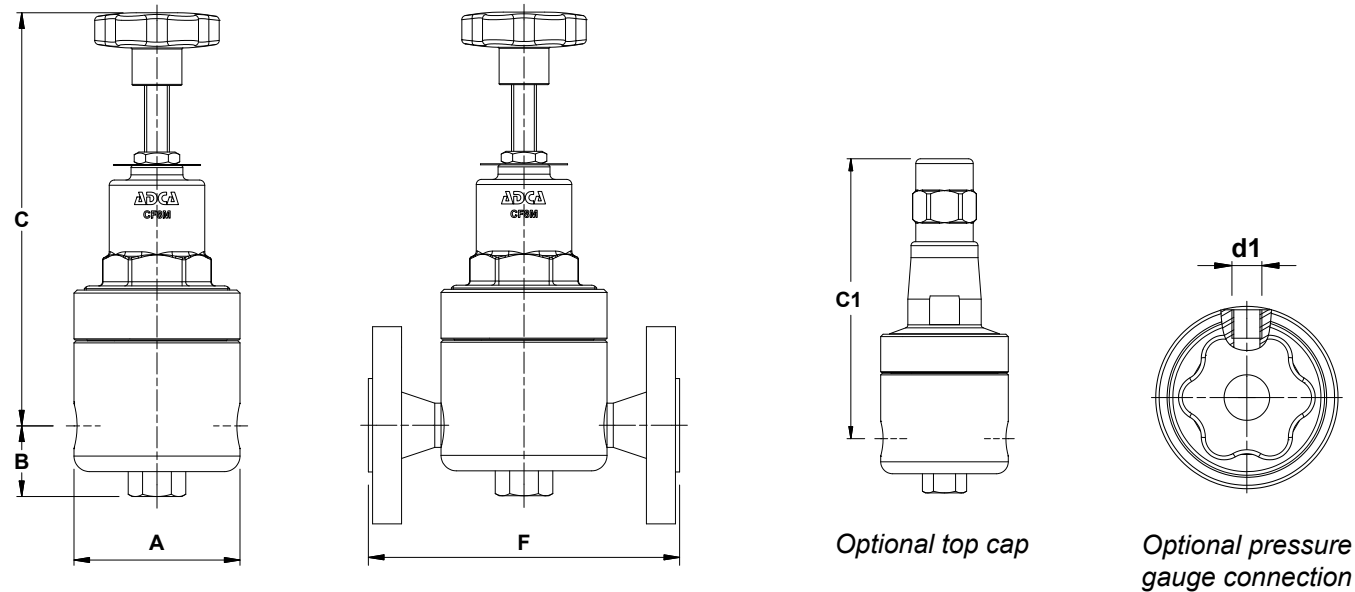
LIMITING CONDITIONS

Valve model	PRV41SS					
Body design conditions	Class 150	Class 300	Class 600	PN 40	PN 100	PN 250
Maximum upstream pressure	16 bar	40 bar	80 bar	40 bar	100 bar	220 bar
Maximum downstream pressure	200 bar					
Minimum downstream pressure	3 bar					
Maximum design temperature	80 °C					
Max. recommended reducing ratio	40:1					

* Rating PN 250 for threaded versions.

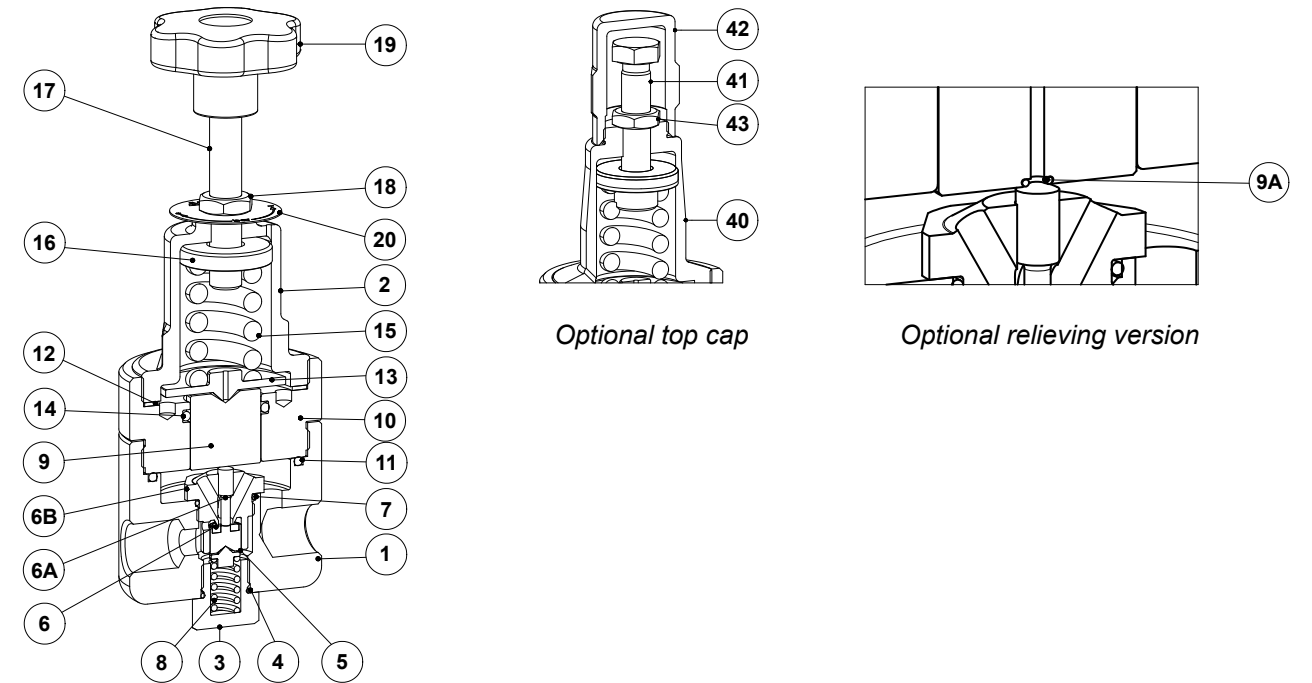
FLOW RATE COEFFICIENTS (m³/h)				
SIZE	1/4"	3/8"	1/2" – DN 15	3/4" – DN 20
Kvs	0,7	0,8	0,9	0,9

OPTIONS	
PRESSURE GAUGE CONNECTION	TOP CAP
	



DIMENSIONS (mm)																		
SIZE	THREADED					PN 40		PN 100		PN 250		CLASS 150		CLASS 300		CLASS 600		
	ØA	B	C	C1	d1	WGT. (kg)	F*	WGT. (kg)	F*	WGT. (kg)	F*	WGT. (kg)	F*	WGT. (kg)	F*	WGT. (kg)	F*	WGT. (kg)
1/4"	80	34	200	176	1/4"	3,7	–	–	–	–	–	–	–	–	–	–	–	–
3/8"	80	34	200	176	1/4"	3,7	–	–	–	–	–	–	–	–	–	–	–	–
1/2" – DN 15	80	34	200	176	1/4"	3,7	150	6,8	210	7,8	230	10,3	150	6,5	150	6,8	180	7,2
3/4" – DN 20	80	34	200	176	1/4"	3,7	150	7,4	210	9,4	230	11,9	150	6,7	150	7,8	180	8,2

* Different face to face dimensions on request.
Remarks: As standard, in versions manufactured with EN 1092-1 flanges or ISO threads, connections d1 is female threaded ISO 228. In versions with ASME B16.5 flanges or NPT threads, these connections are female threaded NPT.



MATERIALS		
POS. N°	DESIGNATION	MATERIAL
1	Valve body	AISI 316 / 1.4401
2	Cover	A351 CF8M / 1.4408
3	Bottom cover	AISI 303 / 1.4305
4	* O-ring	** NBR
5	* Plug piston	AISI 316 / 1.4401
6	* Valve head	** NBR; EPDM; PTFE; FPM
6A	Pushrod	AISI 316 / 1.4401
6B	* Valve seat	AISI 316 / 1.4401
7	* O-ring	** NBR
8	Valve spring	AISI 302 / 1.4300
9	Piston	AISI 316 / 1.4401
9A	* O-ring	** NBR
10	Piston sleeve	AISI 316 / 1.4401
11	* O-ring	** NBR
12	Gasket	Aluminium
13	Spring plate	AISI 316 / 1.4401
15	* Adjustment spring	AISI 302 / 1.4300
16	Top spring plate	Brass
17	Adjustment stem	AISI 304 / 1.4301
18	Locknut	Stainless steel A2
19	Adjustment knob	Nylon
20	Spring Identification plate	Aluminium
40	Cover	AISI 316L / 1.4404
41	Adjustment screw	Stainless steel A2-70
42	Top cap	AISI 316L / 1.4404
43	Locknut	Stainless steel A2

* Available spare parts. ** Others on request.
Remark: All valves have a serial number. In case of non-standard valves this number must be supplied if spare parts are ordered.



ORDERING CODES PRV41SS												
Valve model	R41	.	5	W	N	C	R	4	R	.	B	08
PRV41SS – piston sensing pressure reducing valve	R41											
Regulating range												
N°5 – 3 to 30 bar			5									
N°6 – 5 to 50 bar			6									
N°7 – 20 to 200 bar			7									
Application												
Water				W								
Gases				G								
Oxygen (degreased)				O								
Seal material a)												
NBR					N							
EPDM					E							
PTFE					T							
FPM / Viton					V							
Maximum inlet pressure												
220 bar						F						
Gauge port options												
Without gauge ports											(1)	
Gauge port on the left side (relative to the flow direction)												4
Gauge port on the right side (relative to the flow direction)												3
Gauge ports on both sides												2
Top cap, panel mounting and relieving												
Non-relieving												(1)
Relieving (only for non-dangerous gases)												R
Non-relieving with top cap (adjustment screw with cover)												T
Relieving with top cap (adjustment screw with cover, only for non-dangerous gases)												V
Pipe connection												
Female threaded ISO 7 Rp (non-standard)												A
Female threaded ISO 228												B
Female threaded NPT ASME B1.20.1												C
Flanged EN 1092-1 PN 40												N
Flanged EN 1092-1 PN 100												P
Flanged EN 1092-1 PN 250												R
Flanged ASME B16.5 Class 150												U
Flanged ASME B16.5 Class 300												V
Flanged ASME B16.5 Class 600												W
Size												
1/4"												08
3/8"												10
1/2" or DN 15												15
3/4" or DN 20												20
Special valves / Extras												
Full description or additional codes have to be added in case of non-standard combination.												E

(1) Omitted if a standard valve is requested.
a) Valve head only. Remaining valve seals on request.



DIAPHRAGM SENSING PRESSURE SUSTAINING VALVES PS4

DESCRIPTION

The ADCA PS4 is a series of direct acting, spring-loaded diaphragm sensing, pressure sustaining valves designed for use with compressed air, water and other gases or liquids compatible with the construction.

The valve main purpose is to maintain the upstream pressure under control in applications where small loads are involved. These valves are also specifically recommended to operate as pilot valves in combination with other pressure regulators.

MAIN FEATURES

Compact design.
External diaphragm sensing connection.

OPTIONS: Different soft valves for water and gases.
Gauge connection on body.

USE: Compressed air, water and other gases and liquids compatible with the construction.

AVAILABLE MODELS: PS4S – carbon steel.
PS4i – stainless steel.

SIZES: 1/2" to 1".

CONNECTIONS: Female threaded ISO 7 Rp or NPT.

INSTALLATION: Horizontal installation.
A "Y" strainer should be installed upstream of the valve.
See IMI – Installation and maintenance instructions.



CE MARKING – GROUP 2 (PED – European Directive)

PN 40	Category
1/2" to 1"	SEP

LIMITING CONDITIONS

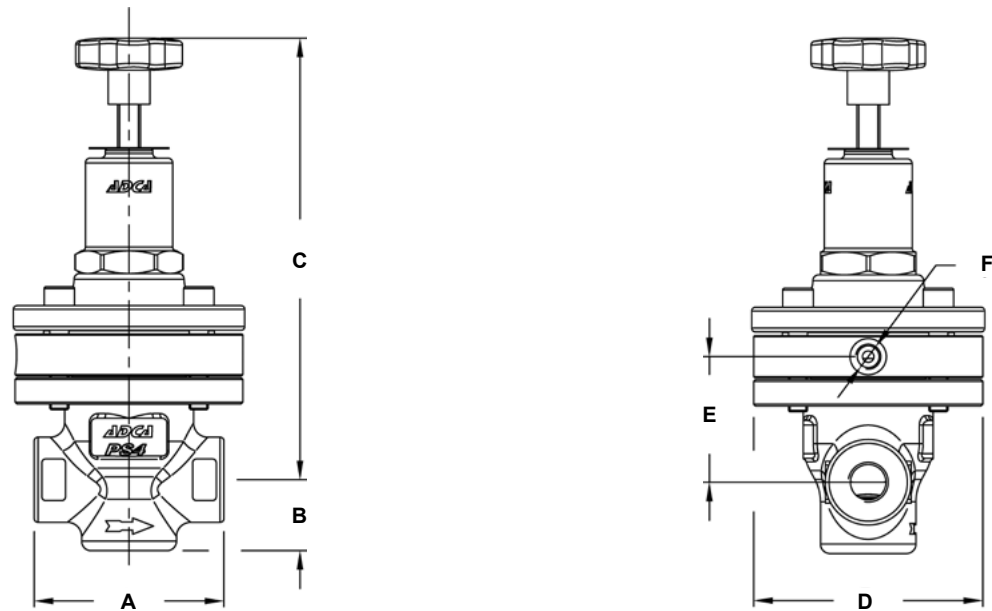
Valve model	PS4
Body design conditions	PN 40
Maximum upstream pressure	15 bar
Minimum upstream pressure	0,35 bar
Maximum design temperature *	80 °C

* Others on request.

Warning: A pressure sustaining valve is not a safety relief valve and must not be used for that purpose!

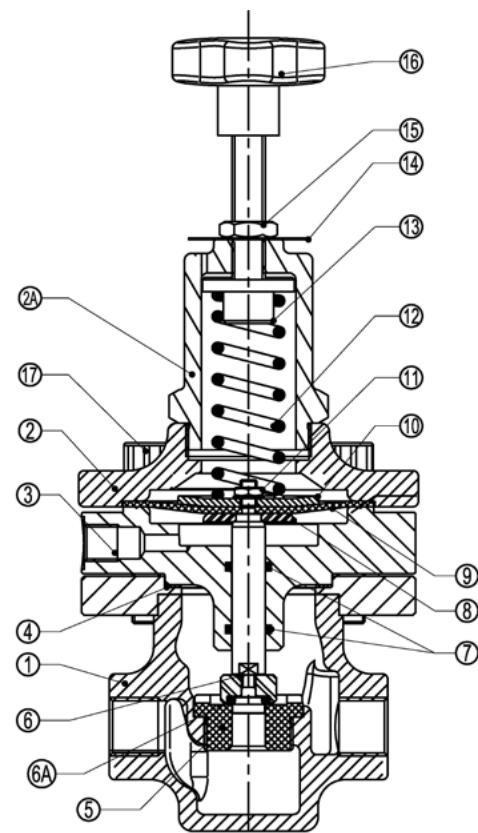
FLOW RATE COEFFICIENTS (m³/h)

SIZE	1/2"	3/4"	1"
Kvs	3,6	3,6	3,7



DIMENSIONS (mm)							
SIZE	A	B	C	ØD	E	F	WEIGHT (kg)
1/2"	100	37,5	247	120	66	1/4"	8,6
3/4"	100	37,5	247	120	66	1/4"	8,6
1"	100	37,5	247	120	66	1/4"	8,6

MATERIALS			
POS. N°	DESIGNATION	PS4S	PS4i
1	Valve body	A216 WCB / 1.0619	A351 CF8M / 1.4408
2	Top cover	A351 CF8 / 1.4308	A351 CF8 / 1.4308
2A	Cover spring	A351 CF8 / 1.4308	A351 CF8 / 1.4308
3	Guide plate	S355JR / 1.0045	AISI 316 / 1.4401
4	* Gasket	** Stainless steel / Graphite	** Stainless steel / Graphite
5	* Valve seat	AISI 316 / 1.4401	AISI 316 / 1.4401
6	* Stem and plug	AISI 316 / 1.4401	AISI 316 / 1.4401
6A	* Valve sealing	** EPDM; PTFE; NBR	** NBR; EPDM; PTFE
7	* O-ring	** EPDM	** EPDM
8	Pusher disc	AISI 316 / 1.4401	AISI 316 / 1.4401
9	* Diaphragm	** NBR	** NBR
10	Spring plate	AISI 304 / 1.4301	AISI 304 / 1.4301
11	Nut	Stainless steel A2-70	Stainless steel A2-70
12	* Adjustment spring	Spring steel	Spring steel
13	Top spring plate	Brass	Brass
14	Spring ID plate	Aluminium	Aluminium
15	Locknut	Stainless steel A2-70	Stainless steel A2-70
16	Handwheel	Plastic	Plastic
17	Bolts	Steel 8.8	Stainless steel A2-70



* Available spare parts. ** Others on request.
Remarks: All valves have a serial number. In case of non-standard valves this number must be supplied if spare parts are ordered.

ORDERING CODES PS4									
Valve model	PS4S	.	1	W	E	N	A	15	
PS4S – carbon steel pressure sustaining valve	PS4S								
PS4i – stainless steel pressure sustaining valve	PS4i								
Regulating range									
Green spring – 0,35 to 2 bar – single diaphragm			1						
Blue spring – 1,5 to 5,5 bar – single diaphragm			2						
Red spring – 3,5 to 8,5 bar – double diaphragm			3						
Black spring – 7 to 17 bar – double diaphragm			4						
Application									
Water				W					
Gases				G					
Seal material a)									
EPDM					E				
PTFE					T				
FPM / Viton					V				
NBR					N				
Diaphragm									
NBR						N			
Gauge port options									
Without gauge ports								(1)	
Gauge port on the left side (relative to the flow direction)								4	
Gauge port on the right side (relative to the flow direction)								3	
Gauge ports on both sides								2	
Pipe connection									
Female threaded ISO 7 Rp								A	
Female threaded NPT ASME B1.20.1								C	
Size									
1/2"									15
3/4"									20
1"									25
Special valves / Extras									
Full description or additional codes have to be added in case of non-standard combination.									E

(1) Omitted if a standard valve is requested.
a) Valve limited to the materials maximum operating temperature. Contact manufacturer for more details.

**DIAPHRAGM SENSING PRESSURE SUSTAINING VALVE
PS7**

DESCRIPTION

The ADCA PS7 series direct acting, spring-loaded diaphragm sensing pressure sustaining valves are designed for use on steam and compressed air and other gases compatible with the materials of construction.

They are suitable for pressure sustaining applications where very small loads are involved. They are also specifically recommended to operate as pilot valves in combination with other pressure regulators.

MAIN FEATURES

Compact design.
Stainless steel diaphragm.

- OPTIONS:**
- 1/8" gauge connection on body.
 - Top cap (adjustment screw with cover).
 - External sensing connection.
 - Low pressure top.
 - Dome loaded version.

USE: Steam, compressed air and other gases compatible with the construction.

AVAILABLE MODELS: PS7S – carbon steel.
PS7SS – stainless steel.

SIZES: 1/4" and 3/8".

CONNECTIONS: Female threaded ISO 7 Rp or NPT.

INSTALLATION: Horizontal installation.
A "Y" strainer should be installed upstream of the valve.
See IMI – Installation and maintenance instructions.

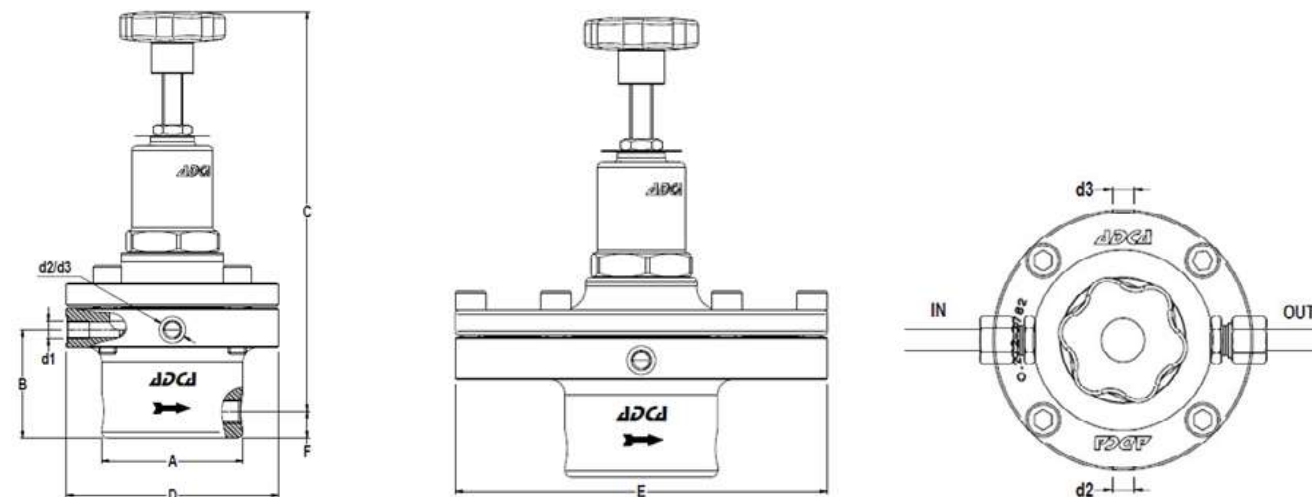


FLOW RATE COEFFICIENTS (m³/h)		
SIZE	1/4"	3/8"
Kvs	0,8	0,8

LIMITING CONDITIONS	
Valve model	PS7
Body design conditions	PN 40
Maximum upstream pressure	17 bar
Minimum upstream pressure	0,35 bar
Maximum downstream pressure	17 bar
Maximum design temperature	300 °C

* 0,07 bar with low pressure top (limited at 7 bar inlet).
The low pressure diaphragm should be fitted for outlet pressures from 0,07 up to 0,5 bar.
Pressure and temperature limiting conditions may change if soft seating is used.
Warning: A pressure sustaining valve is not a safety relief valve and must not be used for that purpose!

CE MARKING – GROUP 2 (PED – European Directive)	
PN 40	Category
1/4" to 3/8"	SEP

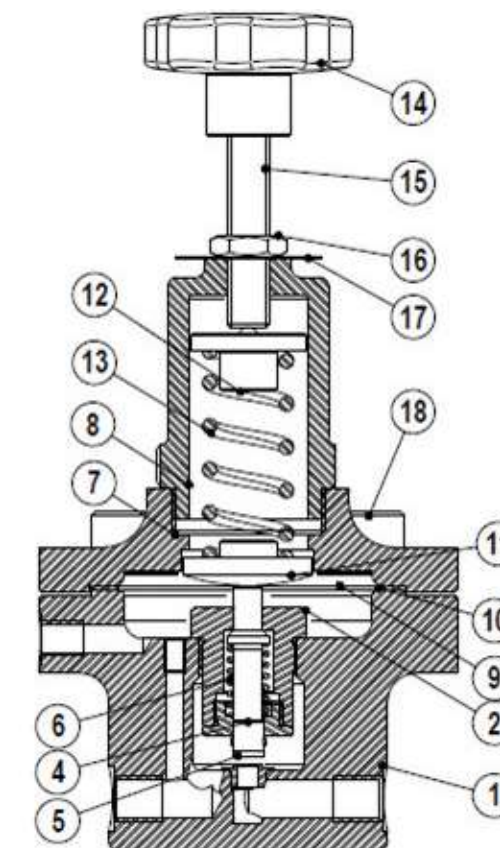


DIMENSIONS (mm)										
SIZE	A	B	C	D	E *	F	d1 **	d2 ***	d3 ***	WEIGHT (kg)
1/4"	80	61	225	120	195	15	1/8	1/8	1/8	4,8
3/8"	80	61	225	120	195	15	1/8	1/8	1/8	4,8

* Low pressure diaphragm; ** Optional sensing line connection; *** Optional pressure gauge connections. As standard, in ISO 7 Rp threaded version, these connections are female threaded ISO 7 Rp. In NPT threaded version, these connections are female threaded NPT.

MATERIALS		
POS. N°	DESIGNATION	MATERIAL
1	Valve body	S355JR / 1.0045; AISI 316 / 1.4401
2	* Pilot valve body	A351 CF8 / 1.4308
4	Pushrod	AISI 316 / 1.4401
5	* Valve plug	AISI 420; EPDM; PTFE, etc.
6	* Spring	AISI 302 / 1.4300
7	Top cover	A351 CF8 / 1.4308
8	Spring cover	A351 CF8 / 1.4308
9	* Diaphragm	AISI 301 / 1.4310
10	* Gasket	Stainless steel / Graphite
11	Lower spring carrier	Brass
12	Top spring carrier	Brass
13	* Adjustment spring	Spring steel
14	Handwheel	Plastic
15	Adjustment screw	AISI 304 / 1.4301
16	Locknut	Stainless steel A2-70
17	Spring ld. plate	Aluminium
18	Bolts	Steel 10.9; Stainless steel A2-70

* Available spare parts.
Remarks: All valves have a serial number. In case of non-standard valves this number must be supplied if spare parts are ordered.



REGULATING RANGES				
SPRING COLOUR	GREEN w/ 1 diaphragm	BLUE w/ 1 diaphragm	RED w/ 2 diaphragms	BLACK w/ 2 diaphragms
Regulating range	0,07 to 0,5 bar * 0,35 to 2 bar	1,5 to 5,5 bar	3,5 to 8,5 bar	7 to 17 bar

* With special low pressure top assembly.

ORDERING CODES PS7										
Valve model	PS7S	.	1	W	E	N		.A	15	
PS7S – Carbon steel pilot pressure sustaining valve	PS7S									
PS7SS – Stainless steel pilot pressure sustaining valve	PS7SS									
Regulating range										
Green spring – 0,35 to 2 bar – single diaphragm			1							
Blue spring – 1,5 to 5,5 bar – single diaphragm			2							
Red spring – 3,5 to 8,5 bar – double diaphragm			3							
Black spring – 7 to 17 bar – double diaphragm			4							
Application										
Steam				S						
Gases				G						
Seal material										
Metal to metal					(1)					
EPDM a)					E					
PTFE a)					T					
FPM / Viton a)					V					
Diaphragm										
Standard diaphragm						S				
Low pressure diaphragm						L				
Gauge port 1/8" b)										
Without gauge ports							(1)			
Gauge port on the left side (relative to the flow direction)								4		
Gauge port on the right side (relative to the flow direction)								3		
Gauge ports on both sides								2		
Pipe connection										
Female threaded ISO 7 Rp									A	
Female threaded NPT ASME B1.20.1									C	
Size										
1/4"										08
3/8"										10
Special valves / Extras										
Full description or additional codes have to be added in case of non-standard combination.										E

(1) Omitted if a standard valve is requested.

a) Valve limited to the materials' maximum operating temperature. Contact manufacturer for more details.

b) Gauge port can also be used as external sensing line.

DIAPHRAGM SENSING PRESSURE SUSTAINING VALVE PS30SS

DESCRIPTION

The ADCA PS30SS is a series of direct acting, spring-loaded, diaphragm sensing pressure sustaining valves. These regulators are designed for use with compressed air, water and other gases and liquids compatible with the construction materials and valve design. They are suitable for pressure sustaining applications at the point of use in laundry and dyeing machines, food industries, sterilizers, etc.

MAIN FEATURES

Compact design.
Full stainless steel construction.
Various sealing options to meet compatibility requirements.

OPTIONS: Gauge connection on body.
Different soft valves for liquids and gases.
Dome-loaded version.
Top cap (adjustment screw with cover).
Degreased for oxygen application.

USE: Compressed air, water and other gases and liquids compatible with the construction.

AVAILABLE MODELS: PS30SS – stainless steel, diaphragm sensing.

SIZES: 1/2" to 1"; DN 15 to DN 25.

CONNECTIONS: Female threaded ISO 7 Rp or NPT.
Flanged EN 1092-1 PN 40.
Flanged ASME B16.5 Class 150 or 300.

INSTALLATION: Horizontal installation.
See IMI – Installation and maintenance instructions.



1/2" to 3/4" – DN 15 to DN 20



1" – DN 25



1/2" to 3/4" – DN 15 to DN 20

1" – DN 25

CE MARKING – GROUP 2 (PED – European Directive)

PN 63	Category
1/2" to 1" – DN 15 to 25	SEP




FLOW RATE COEFFICIENTS (m³/h)

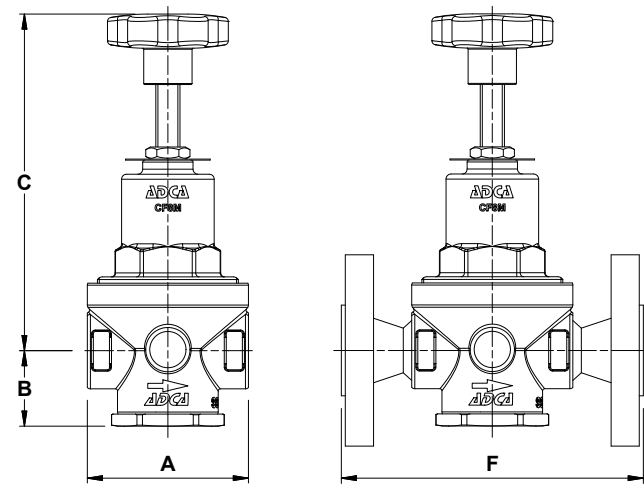
SIZE	1/2" – DN 15	3/4" – DN 20	1" – DN 25
Kvs	2,1	2,4	6,5

LIMITING CONDITIONS				
Valve model	PS30SS			
Body design conditions	Cl. 150	Cl. 300	PN 40	PN 63 *
Max. upstream pressure	15 bar			
Min. upstream pressure	0,2 bar			
Max. design temperature	80 °C			
Maximum dome-loading pressure	15 bar			

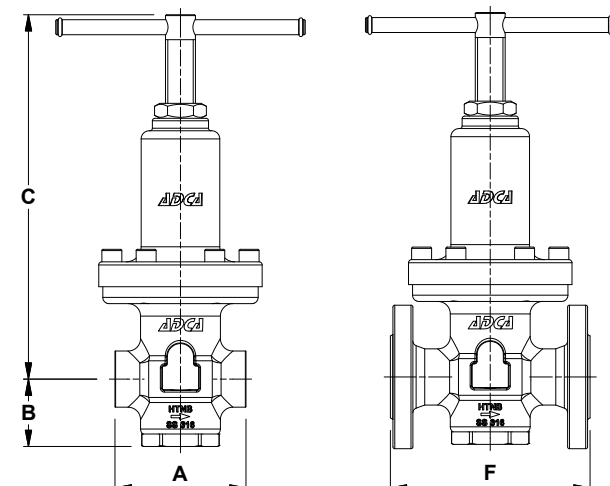
* Rating PN 63 for threaded versions.

Warning: A pressure sustaining valve is not a safety relief valve and must not be used for that purpose!

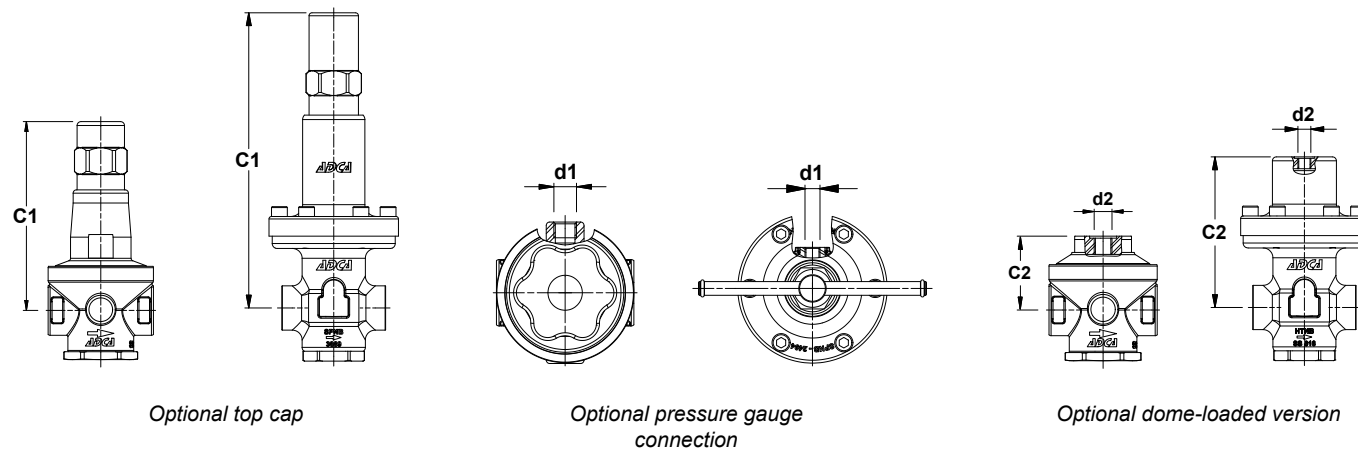
OPTIONS		
PRESSURE GAUGE	TOP CAP	DOME LOADED VERSION
		



1/2" to 3/4" – DN 15 to DN 20



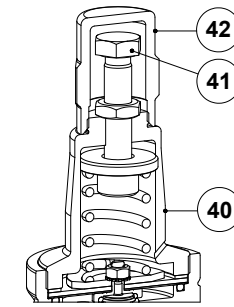
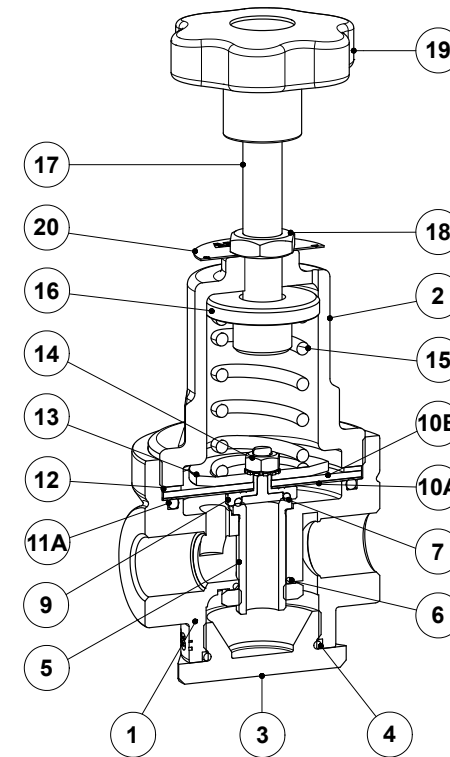
1" – DN 25



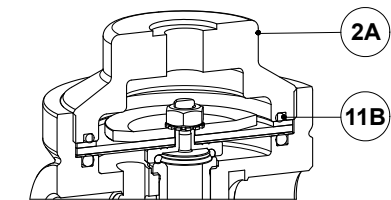
DIMENSIONS (mm)															
SIZE	THREADED								PN 40		CLASS 150		CLASS 300		
	A	B	C	C1	d1	C2	d2	WGT. (kg)	F *	WGT. (kg)	F *	WGT. (kg)	F *	WGT. (kg)	
1/2" – DN 15	80	38	167	145	1/4"	55	1/4"	2,1	150	3,6	150	2,9	150	3,9	
3/4" – DN 20	80	38	167	145	1/4"	55	1/4"	2	150	4,1	150	3,3	150	4,3	
1" – DN 25	105	54	292	300	1/4"	153	1/4"	6,6	160	9,3	230	8,5	230	9,7	

* Different face to face dimensions on request.

Remarks: As standard, in versions manufactured with EN 1092-1 flanges or ISO 7 Rp threads, connections d1 and d2 are female threaded ISO 7 Rp. In versions with ASME B16.5 flanges or NPT threads, these connections are female threaded NPT.

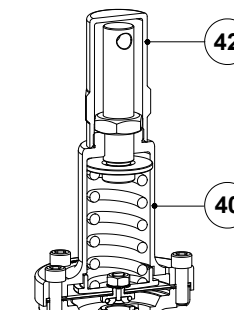
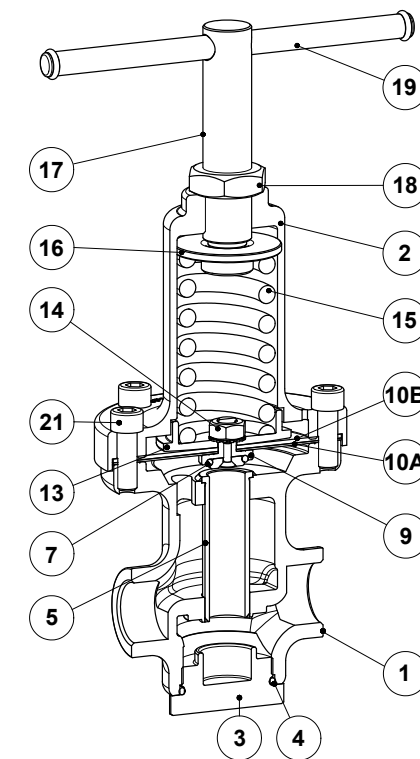


Optional top cap

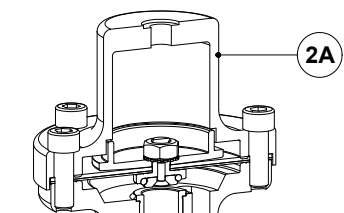


Optional dome-loaded version

1/2" to 3/4" – DN 15 to DN 20



Optional top cap



Optional dome-loaded version

1" – DN 25

MATERIALS			
POS. N°	DESIGNATION	1/2" to 3/4" – DN 15 to DN 20	1" – DN 25
1	Valve body	A351 CF8M / 1.4408	A351 CF8M / 1.4408
2	Spring cover	A351 CF8M / 1.4408	A351 CF8M / 1.4408
2A	Cover	AISI 316L / 1.4404	AISI 316L / 1.4404
3	Bottom cover	A351 CF8M / 1.4408	A351 CF8M / 1.4408
4	* O-ring	NBR; EPDM; PTFE; FPM	NBR; EPDM; PTFE; FPM
5	Valve seat	AISI 316 / 1.4401	AISI 316 / 1.4401
6	* O-ring	NBR; EPDM; PTFE; FPM	–
7	* O-ring	NBR; EPDM; PTFE; FPM	NBR; EPDM; PTFE; FPM
9	Pusher disc	AISI 316 / 1.4401	AISI 316 / 1.4401
10A	* Lower diaphragm	PTFE	PTFE
10B	* Upper diaphragm	NBR	NBR
11A	* O-ring	NBR; EPDM; PTFE; FPM	–
11B	* O-ring	NBR; EPDM; PTFE; FPM	–
12	Gasket	Aluminium	–
13	Spring plate	AISI 304 / 1.4301	AISI 304 / 1.4301
14	Nut	Stainless steel A2-70	Stainless steel A2-70
15	* Adjustment spring	AISI 302 / 1.4300	AISI 302 / 1.4300
16	Top spring plate	Brass	AISI 316 / 1.4401
17	Adjustment stem	AISI 304 / 1.4301	AISI 304 / 1.4301
18	Locknut	Stainless steel A2-70	Stainless steel A2-70
19	Handwheel	Plastic	AISI 304 / 1.4301
20	Spring id. plate	Aluminium	–
21	Bolts	–	Stainless steel A2-70
40	Cover	AISI 316L / 1.4404	A351 CF8M / 1.4408
41	Adjustment screw	Stainless steel A2-70	–
42	Top cap	AISI 316L / 1.4404	AISI 316L / 1.4404

* Available spare parts.

Remark: All valves have a serial number. In case of non-standard valves this number must be supplied if spare parts are ordered.

ORDERING CODES PS30SS													
Valve model	PS30	1	W	N	C	R	4	R	A	15			
PS30SS – diaphragm sensing pressure sustaining valve	PS30												
Regulating range													
N° 1 – 0,2 to 1,5 bar		1											
N° 2 – 0,3 to 3 bar		2											
N° 3 – 0,8 to 8 bar		3											
N° 4 – 1,5 to 15 bar		4											
0,2 to 15 bar (dome-loaded) a)		A											
Application													
Water			W										
Gases			G										
Oxygen (degreased)			O										
Seal material													
NBR				N									
EPDM				E									
PTFE b)				T									
FPM / Viton				V									
Maximum inlet pressure													
15 bar					C								
Diaphragm													
NBR / PTFE (only NBR in case of dome-loaded version)						R							
Gauge port 1/4"													
Without gauge ports										(1)			
Gauge port on the left side (relative to the flow direction)											4		
Gauge port on the right side (relative to the flow direction)												3	
Gauge ports on both sides													2
Top cap and relieving													
Non-relieving												(1)	
Non-relieving with top cap (adjustment screw with cover)													T
Dome-loaded top c)													X
Pipe connection													
Female threaded ISO 7 Rp													A
Female threaded NPT ASME B1.20.1													C
Flanged EN 1092-1 PN 40													N
Flanged ASME B16.5 Class 150													U
Flanged ASME B16.5 Class 300													V
Size													
1/2" or DN 15													15
3/4" or DN 20													20
1" or DN 25													25
Special valves / Extras													
Full description or additional codes have to be added in case of non-standard combination.													E

(1) Omitted if a standard valve is requested.

a) The loading control pressure can be up to a maximum of 1,2 bar above the required downstream pressure.

b) All seals except piston o-ring, which is supplied in FPM/Viton or others on request.

c) This option must be chosen in case of dome-loaded version.

**PISTON SENSING PRESSURE SUSTAINING VALVE
PS31SS**

DESCRIPTION

The ADCA PS31SS is a series of direct acting, spring-loaded, piston sensing pressure sustaining valves. These regulators are designed for use with compressed air, water and other gases and liquids compatible with the construction materials and valve design. They are suitable for pressure sustaining applications at the point of use in laundry and dyeing machines, food industries, sterilizers, etc.

MAIN FEATURES

Compact design.
Full stainless steel construction.
Various sealing options to meet compatibility requirements.

OPTIONS: Gauge connection on body.
Different soft valves for liquids and gases.
Top cap (adjustment screw with cover).
Degreased for oxygen application.

USE: Compressed air, water and other gases and liquids compatible with the construction.

AVAILABLE MODELS: PS31SS – stainless steel, piston sensing.

SIZES: 1/2" to 1"; DN 15 to DN 25.

CONNECTIONS: Female threaded ISO 7 Rp or NPT.
Flanged EN 1092-1 PN 40.
Flanged ASME B16.5 Class 150 or 300.

INSTALLATION: Horizontal installation.
See IMI – Installation and maintenance instructions.



1/2" to 3/4" – DN 15 to DN 20



1" – DN 25



1/2" to 3/4" – DN 15 to DN 20

1" – DN 25

CE MARKING – GROUP 2 (PED – European Directive)

PN 63	Category
1/2" to 1" – DN 15 to 25	SEP

FLOW RATE COEFFICIENTS (m³/h)

SIZE	1/2" – DN 15	3/4" – DN 20	1" – DN 25
Kvs	3	3,5	7,5

LIMITING CONDITIONS

Valve model	PS31SS			
Body design conditions	Cl. 150	Cl. 300	PN 40	PN 63 *
Max. upstream pressure	50 bar			
Min. upstream pressure	3 bar			
Max. design temperature	80 °C			

* Rating PN 63 for threaded versions.

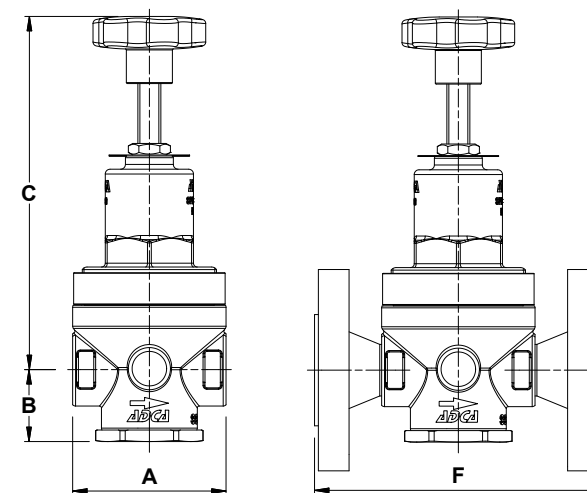
Warning: A pressure sustaining valve is not a safety relief valve and must not be used for that purpose!

OPTIONS

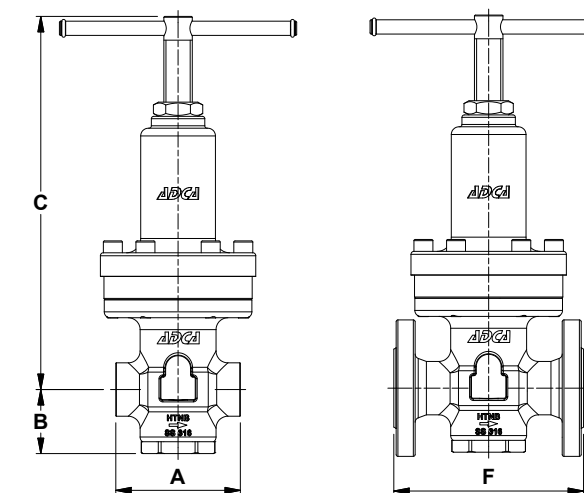
PRESSURE GAUGE



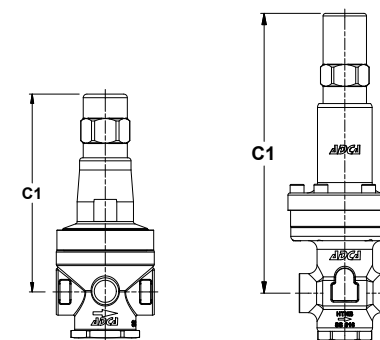
TOP CAP



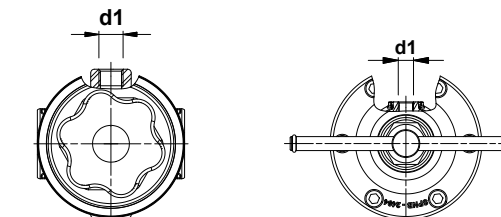
1/2" to 3/4" – DN 15 to DN 20



1" – DN 25



Optional top cap



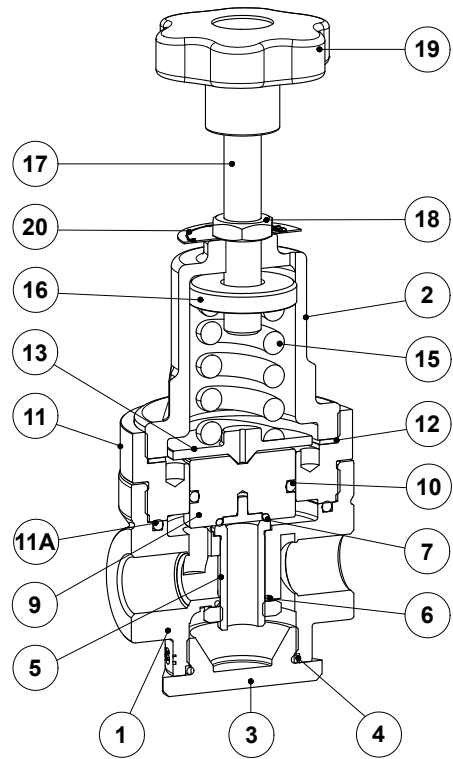
Optional pressure gauge connection

DIMENSIONS (mm)

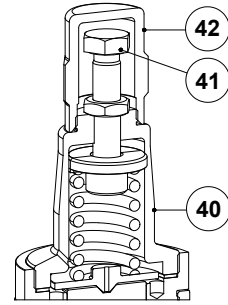
SIZE	THREADED					d1	WEIGHT (kg)	PN 40		CLASS 150		CLASS 300	
	A	B	C	C1	F *			WEIGHT (kg)	F *	WEIGHT (kg)	F *	WEIGHT (kg)	
1/2" – DN 15	80	38	183	162	1/4"	2,8	150	4,3	150	3,6	150	4,6	
3/4" – DN 20	80	38	183	162	1/4"	2,7	150	4,8	150	4	150	5	
1" – DN 25	105	54	309	323	1/4"	8,8	160	11,5	230	10,7	230	11,9	

* Different face to face dimensions on request.

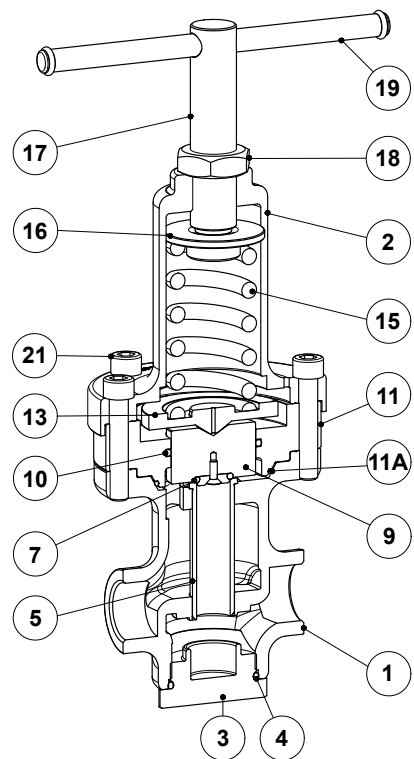
Remarks: As standard, in versions manufactured with EN 1092-1 flanges or ISO 7 Rp threads, connection d1 is female threaded ISO 7 Rp. In versions with ASME B16.5 flanges or NPT threads, this connection is female threaded NPT.



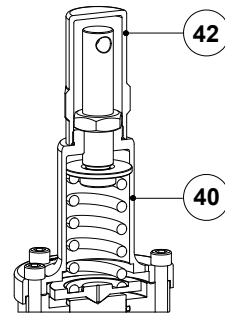
1/2" to 3/4" – DN 15 to DN 20



Optional top cap



1" – DN 25



Optional top cap

MATERIALS			
POS. N°	DESIGNATION	1/2" to 3/4" – DN 15 to DN 20	1" – DN 25
1	Valve body	A351 CF8M / 1.4408	A351 CF8M / 1.4408
2	Spring cover	A351 CF8M / 1.4408	A351 CF8M / 1.4408
3	Bottom cover	A351 CF8M / 1.4408	A351 CF8M / 1.4408
4	* O-ring	NBR; EPDM; PTFE; FPM	NBR; EPDM; PTFE; FPM
5	Valve seat	AISI 316 / 1.4401	AISI 316 / 1.4401
6	* O-ring	NBR; EPDM; PTFE; FPM	–
7	* O-ring	NBR; EPDM; PTFE; FPM	NBR; EPDM; PTFE; FPM
9	Piston	AISI 316 / 1.4401	AISI 316 / 1.4401
10	* Piston o-ring	NBR; EPDM; FPM	NBR; EPDM; FPM
11	Piston sleeve	AISI 316 / 1.4401	AISI 316 / 1.4401
11A	* O-ring	NBR; EPDM; PTFE; FPM	NBR; EPDM; PTFE; FPM
12	Gasket	Aluminium	–
13	Spring plate	AISI 304 / 1.4301	AISI 304 / 1.4301
15	* Adjustment spring	AISI 302 / 1.4300	AISI 302 / 1.4300
16	Top spring plate	Brass	AISI 316 / 1.4401
17	Adjustment stem	AISI 304 / 1.4301	AISI 304 / 1.4301
18	Locknut	Stainless steel A2-70	Stainless steel A2-70
19	Handwheel	Plastic	AISI 304 / 1.4301
20	Spring id. plate	Aluminium	–
21	Bolts	–	Stainless steel A2-70
40	Cover	AISI 316L / 1.4404	A351 CF8M / 1.4408
41	Adjustment screw	Stainless steel A2-70	–
42	Top cap	AISI 316L / 1.4404	AISI 316L / 1.4404

* Available spare parts.

Remark: All valves have a serial number. In case of non-standard valves this number must be supplied if spare parts are ordered.



ORDERING CODES PS31SS												
Valve model	PS31	.	5	W	N	C	4	R	.	A	15	
PS31SS – piston sensing pressure sustaining valve	PS31											
Regulating range												
N° 5 - 3 to 30 bar			5									
N° 6 - 5 to 50 bar			6									
Application												
Water				W								
Gases				G								
Oxygen (degreased)				O								
Seal material												
NBR					N							
EPDM					E							
PTFE a)					T							
FPM / Viton					V							
Maximum inlet pressure												
30 bar											C	
50 bar											D	
Gauge port 1/4"												
Without gauge ports												(1)
Gauge port on the left side (relative to the flow direction)												4
Gauge port on the right side (relative to the flow direction)												3
Gauge ports on both sides												2
Top cap and relieving												
Non-relieving												(1)
Non-relieving with top cap (adjustment screw with cover)												T
Pipe connection												
Female threaded ISO 7 Rp												A
Female threaded NPT ASME B1.20.1												C
Flanged EN 1092-1 PN 40												N
Flanged ASME B16.5 Class 150												U
Flanged ASME B16.5 Class 300												V
Size												
1/2" or DN 15												15
3/4" or DN 20												20
1" or DN 25												25
Special valves / Extras												
Full description or additional codes have to be added in case of non-standard combination.												E

(1) Omitted if a standard valve is requested.

a) All seals except piston o-ring, which is supplied in FPM/Viton or others on request.