

**UNIVERSAL PIPELINE CONNECTORS  
UCX41**

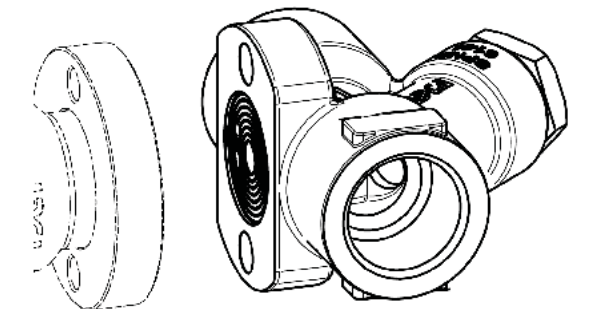
**DESCRIPTION**

The UCX series pipeline connectors are used in steam systems where a simple and economic maintenance program is desired. Typical installations are drip service on steam lines, tracing applications and small process equipment. The two-bolt flange connector allows for fast trap replacement without disturbing the pipelines. The UCX connector fits the universal swivel connection steam traps.

**MAIN FEATURES**

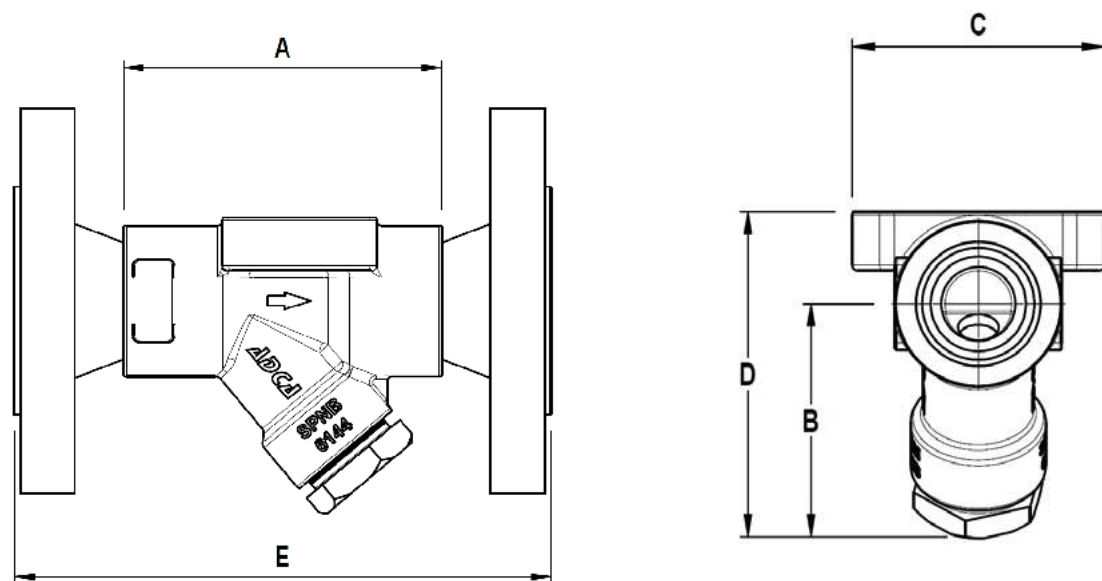
Remains permanently in-line making the replacement of new traps easier and quicker.  
Steam traps can swivel 360°, allowing any pipe orientation during installation.  
The universal flange allows the trap to be positioned in the correct position, regardless of pipeline configuration.  
Built-in strainer.

- OPTIONS:** Blowdown valve.
- USE:** Saturated and superheated steam.
- AVAILABLE MODELS:** UCX41 – stainless steel.
- SIZES:** 1/2" to 1"; DN 15 to DN 25.
- CONNECTIONS:** Female threaded ISO 7 Rp or NPT.  
Flanged EN 1092-1 PN 40.  
Flanged ASME B16.5 Class 150 or 300.  
Socket weld (SW) ASME B16.11.  
Butt weld (BW) ASME B16.25 on request.
- INSTALLATION:** With the surface for swivel connection in a vertical plane (mechanical steam traps) or, alternatively, in an horizontal plane for thermostatic steam traps. See IMI – Installation and maintenance instructions.



BODY LIMITING CONDITIONS				
THREADED / SW	FLANGED PN 40 *	FLANGED CLASS 150 **	FLANGED CLASS 300 **	RELATED TEMPERATURE
ALLOWABLE PRESSURE	ALLOWABLE PRESSURE	ALLOWABLE PRESSURE	ALLOWABLE PRESSURE	
47,8 bar	40 bar	15,3 bar	39,9 bar	-10 / 50 °C
40,9 bar	37,9 bar	13,3 bar	34,4 bar	100 °C
34,4 bar	31,8 bar	11,1 bar	28,8 bar	200 °C
30,6 bar	27,6 bar	9,7 bar	25,2 bar	300 °C
28,6 bar	25,7 bar	6,5 bar	23,1 bar	400 °C

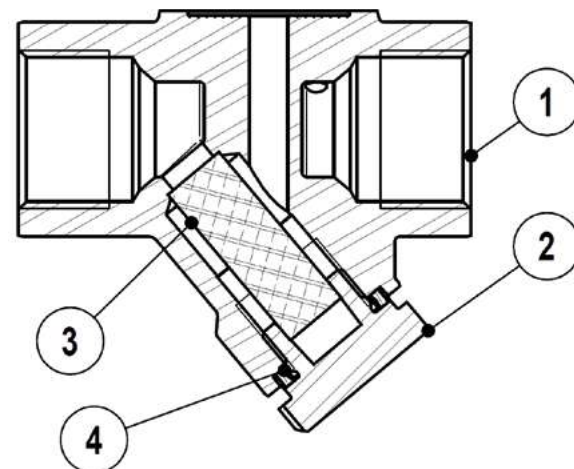
\* According to EN 1092-1:2018; \*\* According to EN 1759-1:2004.



DIMENSIONS (mm)											
THREADED / SW						PN 40		CLASS 150		CLASS 300	
SIZE	A	B	C	D	WEIGHT (kg)	E	WEIGHT (kg)	E	WEIGHT (kg)	E	WEIGHT (kg)
1/2" – DN 15	80	63	68	88	1	150	2,4	150	2	150	2,4
3/4" – DN 20	80	63	68	88	1	150	3	150	2,5	150	3,3
1" – DN 25	95	63	68	88	1,1	160	3,6	160	3,1	160	3,8

MATERIALS		
POS. N°	DESCRIPTION	MATERIAL
1	Body	A351 CF8 / 1.4308
2	Strainer cap	AISI 304 / 1.4301
3	* Strainer screen	AISI 304 / 1.4301
4	* Gasket	AISI 304 / 1.4301

\* Available spare parts.



**COMPACT TRAPPING STATION  
CTS4U**  
(For use with universal swivel connector steam traps)

**DESCRIPTION**

The UniADCA CTS4U is a complete and compact steam trapping station designed to be used as an alternative to traditional multi-component trap stations, simplifying maintenance and reducing downtime and associated costs.

The swivel connector allows steam trap replacement in only a few minutes without disturbing the pipeline.

Compatible with "two-bolt" UniADCA universal steam traps and other universal steam traps with swivel connector.

Typical installations include drip service on steam lines, tracing, SKID's and small process equipment.

**MAIN FEATURES**

Built-in strainer and check valve.

Reduced downtime and costs due to easy in-line maintenance.

Safe depressurization through bleed valve or BDV.

Available with double upstream shut-off valves.

Universal steam traps can swivel 360°, allowing the steam trap to be fitted in the correct position, regardless of pipeline configuration.

OPTIONS: BDV – Blowdown valve.

USE: Saturated and superheated steam.

AVAILABLE MODELS: CTS4U – stainless steel, with inlet and outlet shut-off valves.  
CTS4UD – stainless steel, with double inlet shut-off valves.  
CTS4UDB – stainless steel, with double inlet shut-off valves and bleed valve.

SIZES: 1/2" to 1"; DN 15 to DN 25.

CONNECTIONS: Female threaded ISO 7 Rp or NPT.  
Flanged EN 1092-1 PN 40.  
Flanged ASME B16.5 Class 150 or Class 300.

INSTALLATION: See IMI – Installation and maintenance instructions.

LIMITING CONDITIONS	
Body design conditions	PN 40
Maximum pressure for saturated steam	17,5 bar
Maximum operating temperature	230 °C @ 10 bar
Minimum operating temperature	-10 °C



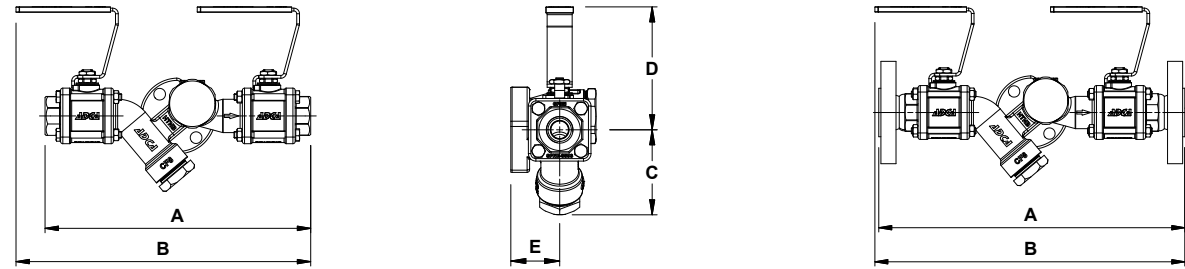
CTS4U



CTS4UD

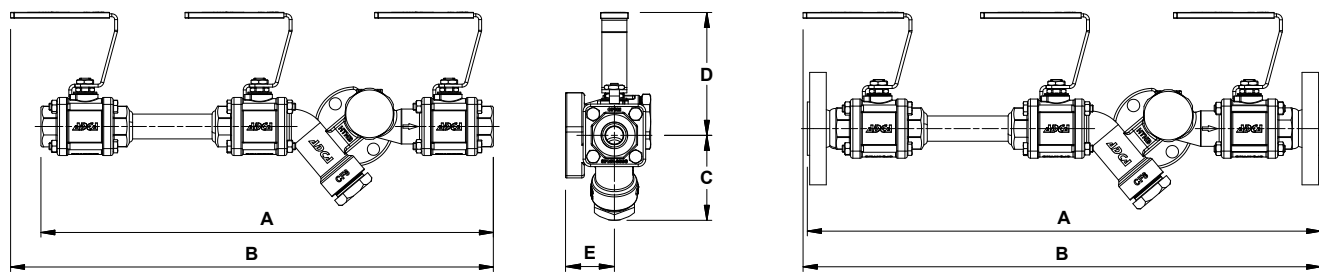


CTS4UDB



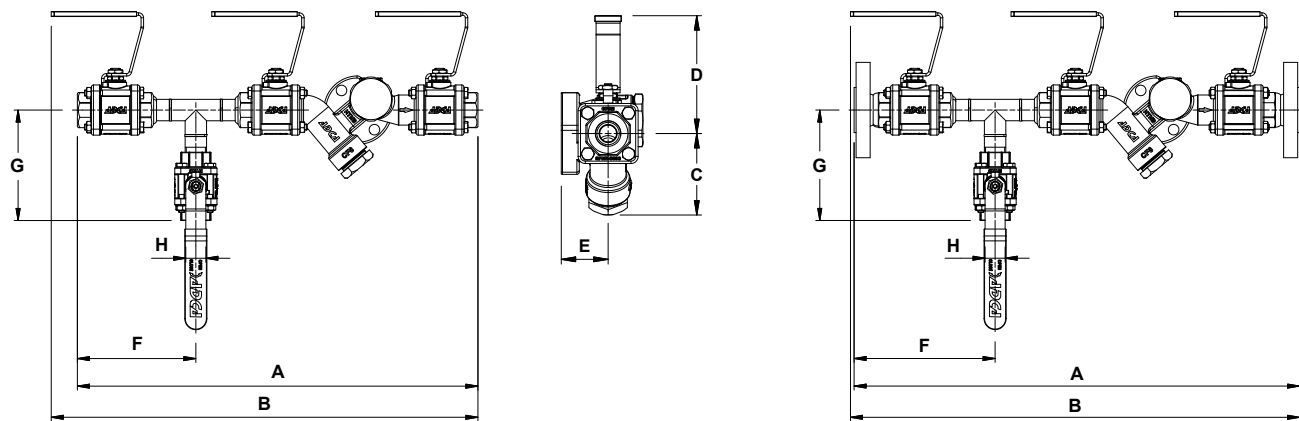
DIMENSIONS (mm) – CTS4U

SIZE	THREADED						PN 40			CLASS 150			CLASS 300	
	A	B	C	D	E	WGT. (kg)	A	B	WGT. (kg)	A	B	WGT. (kg)	A	WGT. (kg)
1/2" – DN 15	239	265	68	98	39	3	284	288	4,5	290	291	4	300	4,6
3/4" – DN 20	239	265	68	98	39	3	304	–	5,1	305	–	4,4	325	5,6
1" – DN 25	287	289	68	98	39	3,3	304	–	5,5	335	–	5	348	6,2



DIMENSIONS (mm) – CTS4UD

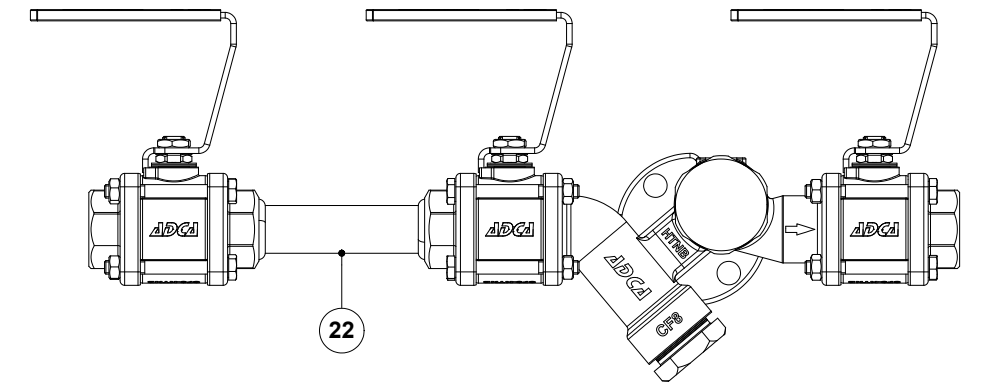
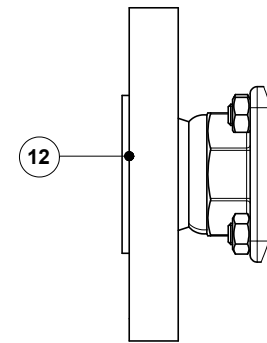
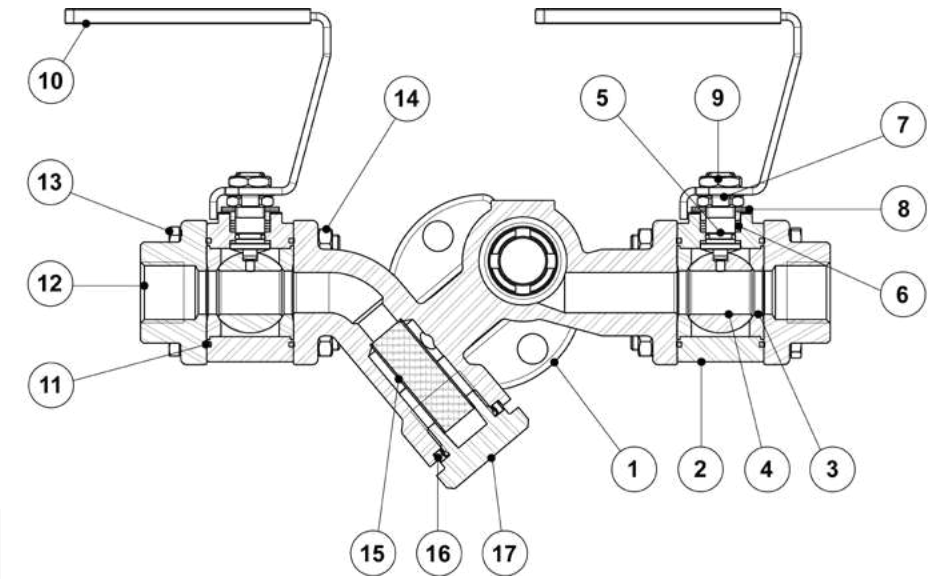
SIZE	THREADED						PN 40			CLASS 150			CLASS 300	
	A	B	C	D	E	WGT. (kg)	A	B	WGT. (kg)	A	B	WGT. (kg)	A	WGT. (kg)
1/2" – DN 15	384	415	68	98	39	4	434	438	5,6	440	440	5	450	5,6
3/4" – DN 20	389	415	68	98	39	4	454	–	6,2	455	–	5,5	475	6,6
1" – DN 25	437	439	68	98	39	4,4	454	–	6,6	485	–	6	498	7,3



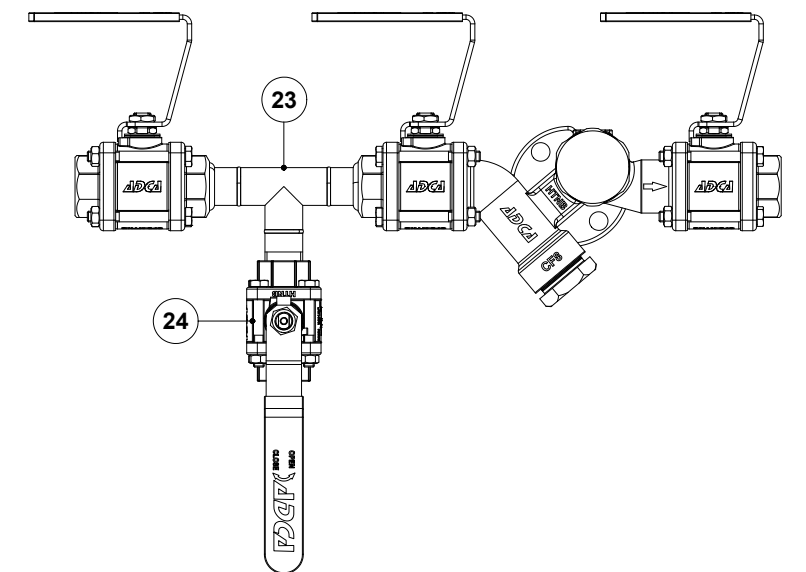
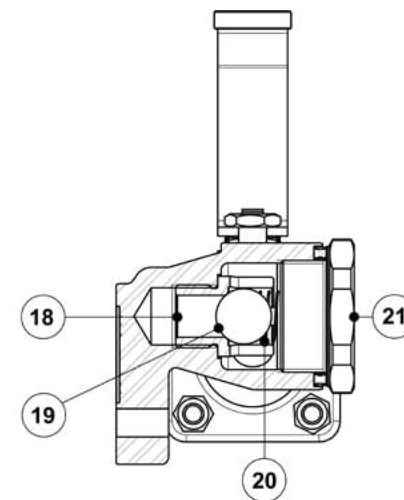
DIMENSIONS (mm) – CTS4UDB

SIZE	THREADED								PN 40				CLASS 150				CLASS 300			
	A	B	C	D	E	F	G	H	WGT. (kg)	A	B	F	WGT. (kg)	A	B	F	WGT. (kg)	A	F	WGT. (kg)
1/2" – DN 15	399	425	68	98	39	118	110	1/2"	4,8	444	448	140	6,3	450	451	143	5,7	460	148	6,3
3/4" – DN 20	399	425	68	98	39	118	110	1/2"	4,7	464	–	150	6,9	465	–	151	6,1	485	161	7,3
1" – DN 25	447	449	68	98	39	142	110	1/2"	5	464	–	150	7,2	495	–	166	6,7	508	172	7,9

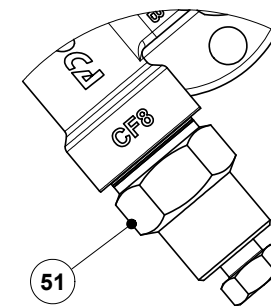
MATERIALS



CTS4UD



CTS4UDB



BDV – Blowdown valve (optional)

MATERIALS		
POS. Nº	DESIGNATION	MATERIAL
1	Main valve body	A351 CF8 / 1.4308
2	Ball valve body	A351 CF8 / 1.4308
3	* Seat	PTFE/GR
4	* Valve ball	AISI 316L / 1.4404
5	* Stem	AISI 316L / 1.4404
6	* Stem seals	PTFE/GR
7	* Lock washers	AISI 304 / 1.4301
8	* Spring washers	AISI 304 / 1.4301
9	Stem nut	Stainless steel A2-70
10	Handle	AISI 304 / 1.4301; Vinyl
11	Body seal	PTFE
12	Cap (threaded)	A351 CF8 / 1.4308
	Cap (flanged)	A351 CF8 / 1.4308; AISI 304 / 1.4301
13	Bolts	AISI 304 / 1.4301
14	Nuts	Stainless steel A2-70
15	* Strainer screen	AISI 304 / 1.4301
16	* Gasket	Stainless steel / Graphite
17	Strainer plug	AISI 304 / 1.4301
18	* Check valve seat	AISI 304 / 1.4301
19	* Check valve ball	AISI 304 / 1.4301
20	* Spring	AISI 302 / 1.4300
21	Check valve cover	AISI 304 / 1.4301
22	Spool piece	AISI 316L / 1.4404
23	Spool piece with drain	AISI 316L / 1.4404
24	Bleed valve M3i5	A351 CF8 / 1.4308
51	Blowdown valve	AISI 303 / 1.4305; AISI 316L / 1.4404

\* Available spare parts.

**BIMETALLIC STEAM TRAP  
UBS20**  
(For use with universal pipeline connectors)

DESCRIPTION

The UBS20 series bimetallic steam traps and air eliminators, completely in stainless steel, are maintenance free and sealed traps. Simple and robust, they are recommended for drip service, steam tracing applications and where condensate sensible heat can be recovered.

These traps fit the UCX universal connectors and CTS4U compact stations.

MAIN FEATURES

- Sealed, non-maintainable.
- Modulating discharge.
- Discharges condensate below steam temperature.
- Excellent air discharge.
- Operates on superheated steam.
- Unaffected by water-hammer and vibrations.

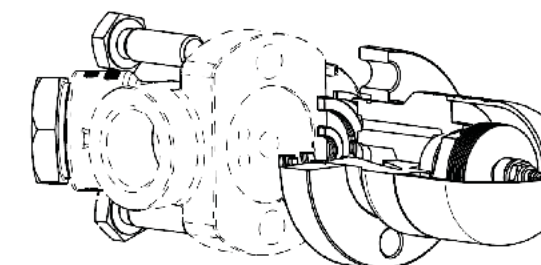
OPTIONS: Different operating limits.

USE: Saturated and superheated steam.

AVAILABLE MODELS: UBS20 – stainless steel.

SIZES: According to the selected pipeline connector.

INSTALLATION: In any position.  
See IMI – Installation and maintenance instructions.

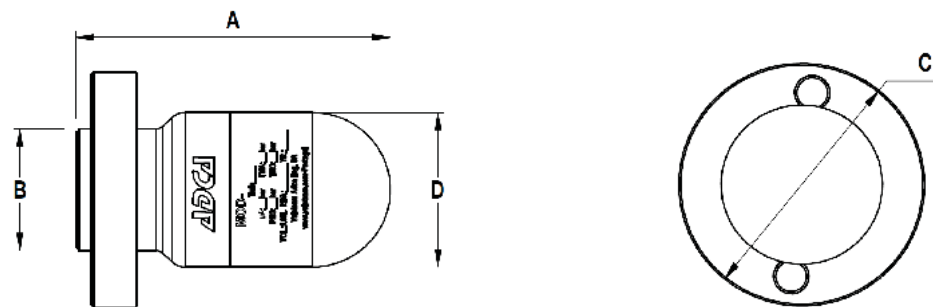


BODY LIMITING CONDITIONS *	
CLASS 300 ALLOWABLE PRESSURE	RELATED TEMPERATURE
39,9 bar	-10 / 50 °C
34,4 bar	100 °C
28,8 bar	200 °C
25,2 bar	300 °C
23,1 bar	400 °C

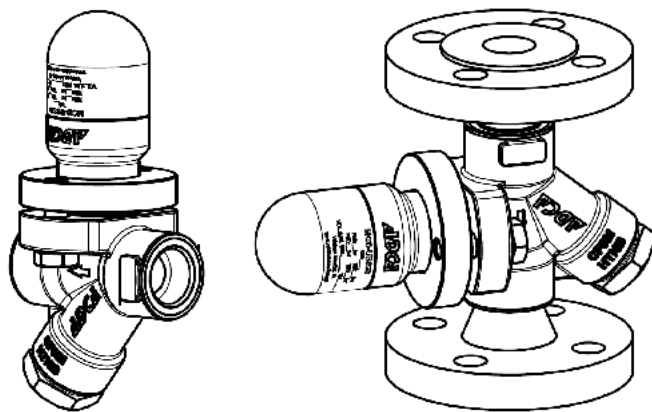
PMO – Maximum operating pressure: 17 bar;  
TMO – Maximum operating temperature: 250 °C.  
\* According to EN 1759-1:2004.  
Remark: the pipeline connector may restrict the operating conditions to a lower rating.

MODEL	FLOW RATE CAPACITY (kg/h)									
	DIFFERENTIAL PRESSURE (bar)									
	0,5	1	2	4	6	8	10	12	14	16
UBS20 (A)	225	350	490	650	720	795	820	850	880	900
UBS20 (B)	550	800	1100	1500	1750	1825	2000	2100	2175	2235

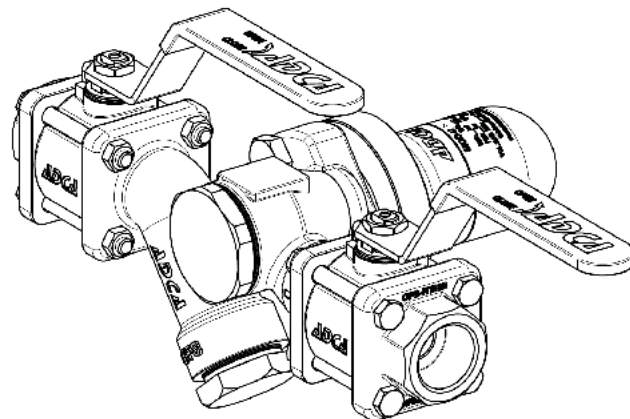
A: Condensate discharge at 10 °C below saturation temperature; B: Cold water capacity around 20 °C.



DIMENSIONS (mm)					
MODEL	A	B	C	D	WEIGHT (kg)
UBS20	89	35	67	44	1,3



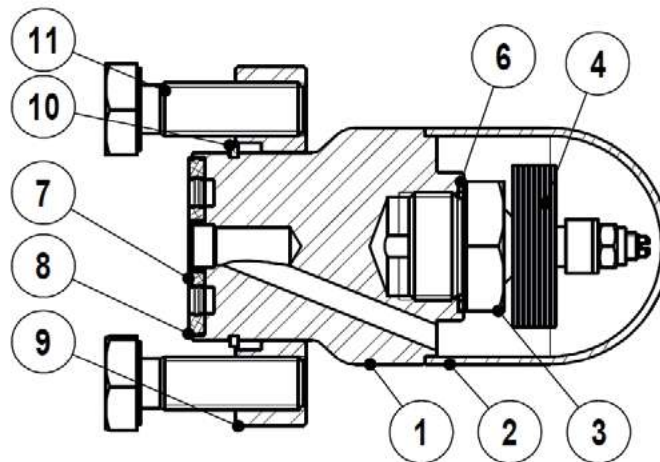
UBS steam trap connected to a UCX universal pipeline connector



UBS steam trap connected to a CTS4U compact station

MATERIALS		
POS. N°	DESCRIPTION	MATERIAL
1	Body	AISI 316L / 1.4404
2	Cover	AISI 316 / 1.4401
3	Valve seat	AISI 304 / 1.4301
4	Discs	Bimetal
6	Gasket	Copper
7	* Inlet gasket	Stainless steel / Graphite
8	* Outlet gasket	Stainless steel / Graphite
9	Flange	AISI 316 / 1.4401
10	Retainer ring	Steel
11	Bolts	A193 Gr. B7

\* Available spare parts.



## THERMOSTATIC STEAM TRAP UTS22 (For use with universal pipeline connectors)

### DESCRIPTION

The UTS22 series thermostatic steam traps and air eliminators, completely in stainless steel, are maintenance free and sealed traps. They are specifically designed to be used on process equipment such as kettle cookers, sterilizers, food, chemical and laundry equipment. These traps fit the UCX universal connectors and CTS4U compact stations.

### MAIN FEATURES

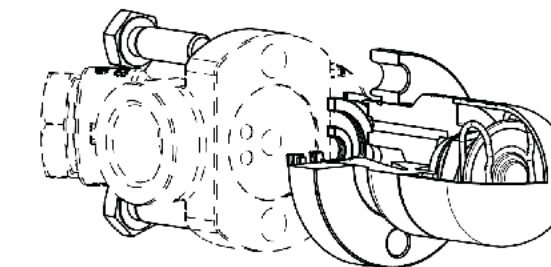
Sealed, non-maintainable.  
Modulating discharge.  
Discharges condensate close to steam temperature.  
Thermostats for different sub cooling temperatures (5 °C to 30 °C).  
Excellent air discharge.  
Operates on moderate superheated steam.

USE: Saturated steam.

AVAILABLE MODELS: UTS22 – stainless steel.  
UTS22LC – stainless steel, low capacity.

SIZES: According to the selected pipeline connector.

INSTALLATION: In any position.  
See IMI – Installation and maintenance instructions.



BODY LIMITING CONDITIONS *	
CLASS 300 ALLOWABLE PRESSURE	RELATED TEMPERATURE
39,9 bar	-10 / 50 °C
34,4 bar	100 °C
28,8 bar	200 °C
25,2 bar	300 °C
23,1 bar	400 °C

PMO – Maximum operating pressure: 22 bar;  
TMO – Maximum operating temperature: 250 °C.  
\* According to EN 1759-1:2004.

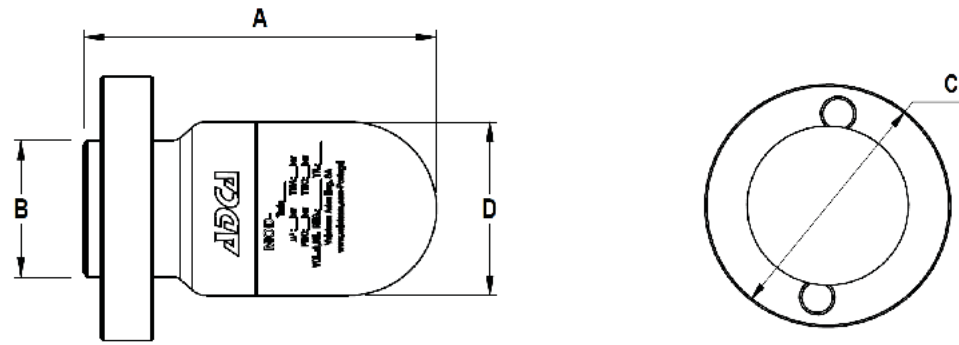
Remark: the pipeline connector may restrict the operating conditions to a lower rating.

MODEL	FLOW RATE CAPACITY (kg/h)														
	DIFFERENTIAL PRESSURE (bar)														
	0,2	0,3	0,5	1	1,5	2	3	4	6	8	10	13	15	20	22
UTS22	70	120	140	255	330	385	455	510	600	670	700	720	750	775	795
UTS22LC	45	55	70	95	125	135	180	200	270	315	330	360	370	405	415

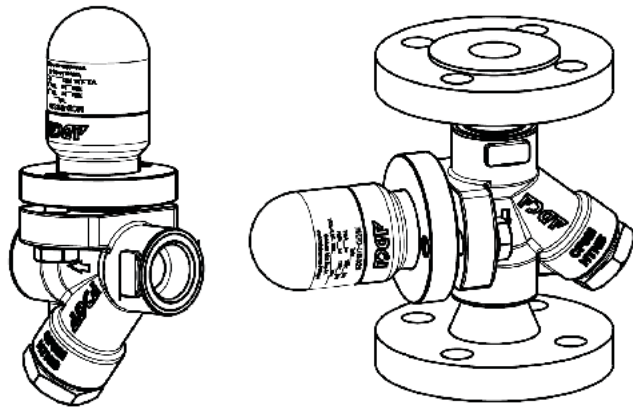
Capacities shown refer to condensate at 10 °C below saturated steam temperature (standard type S thermostat).

Thermostats for 5 °C (type H) and 30 °C (type L) also available.

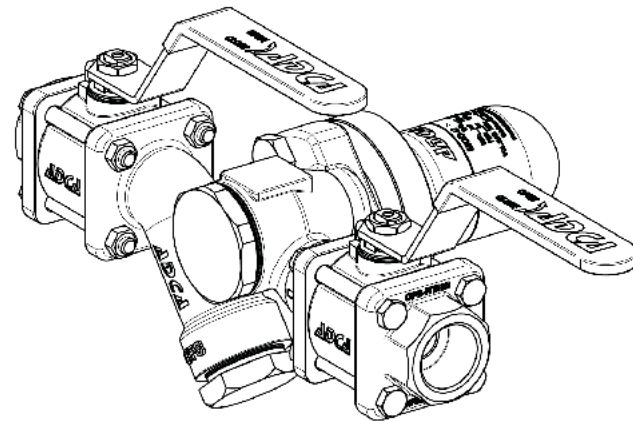
Capacities for cold condensate discharge at 20 °C are two to three times greater.



DIMENSIONS (mm)					
MODEL	A	B	C	D	WEIGHT (kg)
UTS22	89	35	67	44	0,95



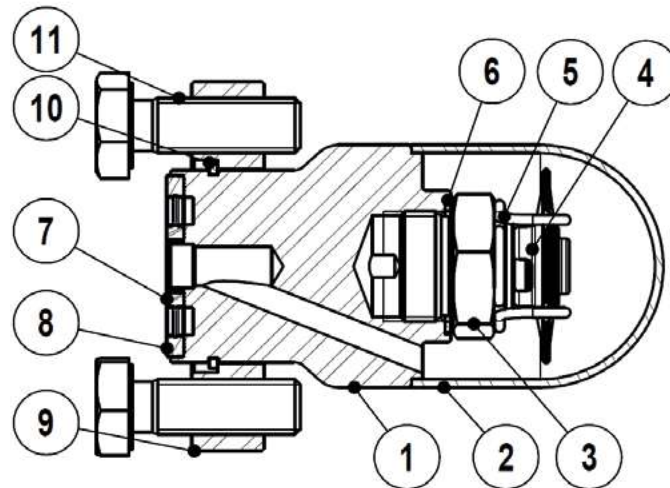
UTS steam trap connected to a UCX universal pipeline connector



UTS steam trap connected to a CTS4U compact station

MATERIALS		
POS. N°	DESCRIPTION	MATERIAL
1	Body	AISI 316L / 1.4404
2	Cover	AISI 316 / 1.4401
3	Valve seat	AISI 304 / 1.4301
4	Thermostatic element	Stainless steel
5	Spring	AISI 302 / 1.4300
6	Gasket	Copper
7	* Inlet gasket	Stainless steel / Graphite
8	* Outlet gasket	Stainless steel / Graphite
9	Flange	AISI 316 / 1.4401
10	Retainer ring	Steel
11	Bolts	ASTMA193 Gr. B7

\* Available spare parts.



**FLOAT AND THERMOSTATIC STEAM TRAPS  
UFS32  
(For use with universal pipeline connectors)**

**DESCRIPTION**

The UFS32 series float and thermostatic (integral air vent) steam traps, completely in stainless steel, are maintenance free and sealed. They are specifically designed to work with low and medium pressure steam and all types of heating and process equipment. Typical applications include unit heaters, heat exchangers, driers, jacketed vessels and all the applications where continuous drainage is essential. These traps fit the UCX universal connectors and CTS4U compact stations.

**MAIN FEATURES**

Sealed, non-maintainable.  
Modulating discharge.  
Discharges condensate at steam temperature.  
Unaffected by sudden or wide load and pressure changes.  
Excellent air discharge (by thermostatic air vent).

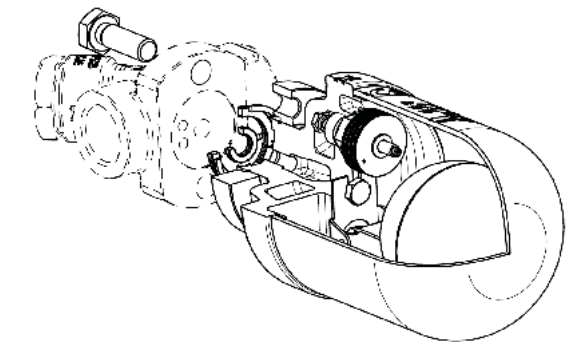
USE: Saturated and superheated steam.

AVAILABLE MODELS: UFS32-4,5 , 10, 14, 21 and 32 – stainless steel.

SIZES: According to the selected pipeline connector.

INSTALLATION: Always in a horizontal plane with the "O" of the TOP inscription perfectly aligned with the vertical axis. See IMI – Installation and maintenance instructions.

MAX. ΔP: UFS32-4,5 – 4,5 bar  
UFS32-10 – 10 bar  
UFS32-14 – 14 bar  
UFS32-21 – 21 bar  
UFS32-32 – 32 bar

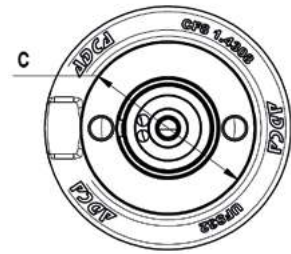
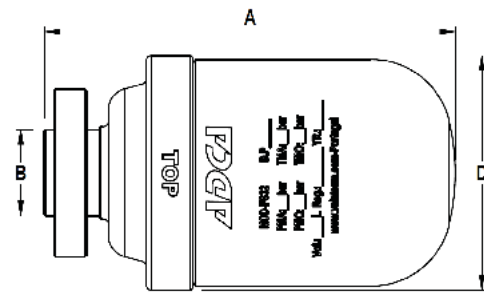


BODY LIMITING CONDITIONS *	
CLASS 300 ALLOWABLE PRESSURE	RELATED TEMPERATURE
47,8 bar	-10 / 50 °C
40,9 bar	100 °C
34,4 bar	200 °C
30,6 bar	300 °C
28,6 bar	400 °C

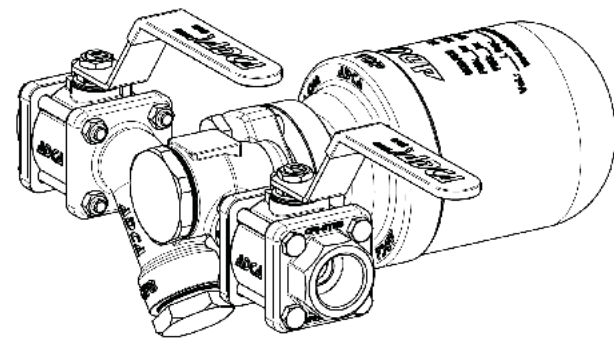
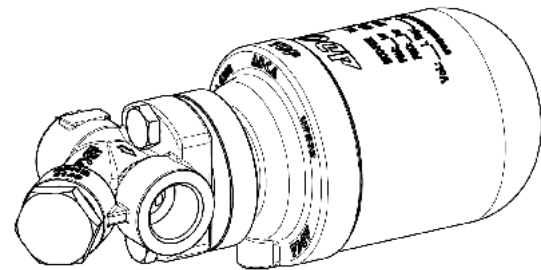
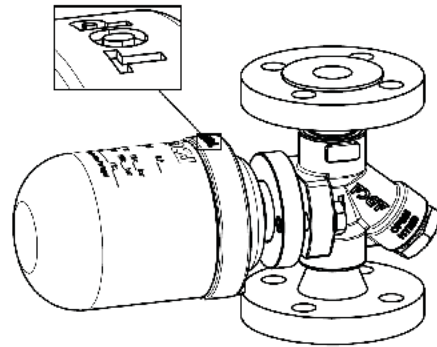
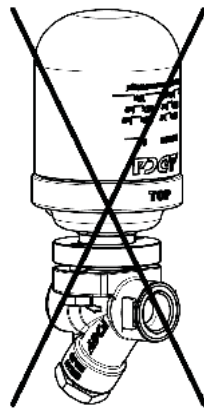
PMO – Maximum operating pressure: 32 bar;  
TMO – Maximum operating temperature: 245 °C.  
\* According to EN 1759-1:2004.

Remark: the pipeline connector may restrict the operating conditions to a lower rating.

MODEL	FLOW RATE CAPACITY (kg/h)															
	DIFFERENTIAL PRESSURE (bar)															
	0,5	1	1,5	2	3	4,5	6	7	8	9	10	12	14	16	21	32
UFS32 – 4,5	230	330	400	440	535	630	–	–	–	–	–	–	–	–	–	–
UFS32 – 10	150	200	250	280	340	400	460	495	520	550	595	–	–	–	–	–
UFS32 – 14	120	150	190	220	260	320	380	400	425	440	480	510	550	–	–	–
UFS32 – 21	60	80	90	115	135	160	190	200	220	230	240	260	270	290	300	–
UFS32 – 32	36	50	62	75	90	105	120	140	150	155	160	170	190	200	230	280



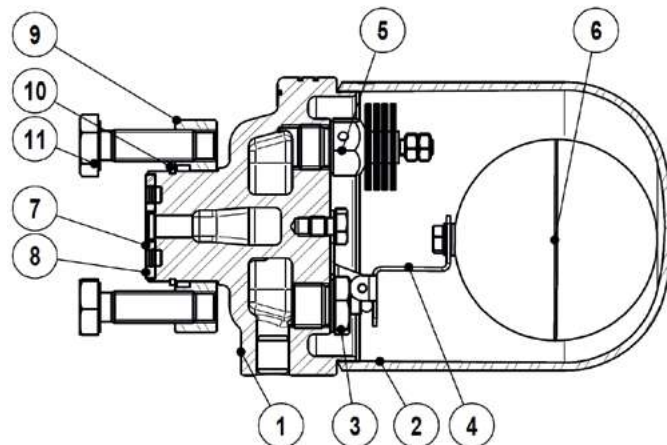
DIMENSIONS (mm)					
MODEL	A	B	C	D	WEIGHT (kg)
UFS32	164	35	67	94	2,1



UFS steam trap connected to a UCX universal pipeline connector

UFS steam trap connected to a CTS4U compact station

MATERIALS		
POS. N°	DESCRIPTION	MATERIAL
1	Body	A351 CF8 / 1.4308
2	Cover	AISI 304 / 1.4301
3	Valve seat	AISI 410 / 1.4006
4	Valve	AISI 440C / 1.4125
5	Air vent	Bimetallic
6	Float	AISI 301 / 1.4301
7	* Inlet gasket	Stainless steel / Graphite
8	* Outlet gasket	Stainless steel / Graphite
9	Flange	AISI 316 / 1.4401
10	Retainer ring	Steel
11	Bolts	ASTMA193 Gr. B7



\* Available spare parts.

**THERMODYNAMIC STEAM TRAP  
UDT46  
(For use with universal pipeline connectors)**

DESCRIPTION

The UDT46 series thermodynamic steam traps, completely in stainless steel, are excellent for high pressure systems, including steam tracing applications. The insulation cover ensures a consistent operation and makes them particularly suitable for applications where the weather conditions, such as rain and wind, may affect the normal operation. These traps have only one moving part and offer a wide operating range, without adjustment. These traps fit the UCX universal connectors and CTS4U compact stations.

MAIN FEATURES

- Intermittent discharge.
- Standard insulation cover.
- Operates on superheated steam.
- Replaceable seat and disc.
- Unaffected by water hammer and vibrations.

USE: Saturated and superheated steam.

AVAILABLE MODELS: UDT46 – stainless steel.

SIZES: According to the selected pipeline connector.

INSTALLATION: With the insulation cover pointing upwards. See IMI – Installation and maintenance instructions.

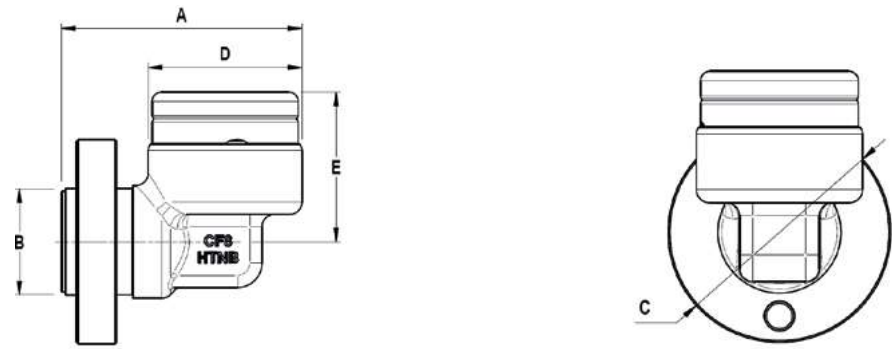


BODY LIMITING CONDITIONS *	
CLASS 300 ALLOWABLE PRESSURE	RELATED TEMPERATURE
47,8 bar	-10 / 50 °C
40,9 bar	100 °C
34,4 bar	200 °C
30,6 bar	300 °C
28,6 bar	400 °C

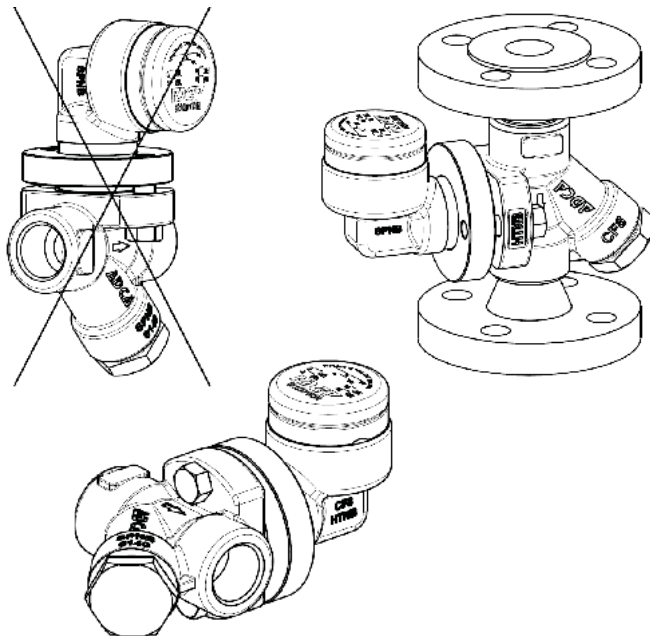
PMO – Maximum operating pressure: 32 bar;  
TMO – Maximum operating temperature: 245 °C.  
\* According to EN 1759-1:2004.  
Remark: the pipeline connector may restrict the operating conditions to a lower rating.

MODEL	FLOW RATE CAPACITY (kg/h)											
	DIFFERENTIAL PRESSURE (bar)											
	1,5	3	5	7	9	12	15	18	21	24	30	32
UDT46 (Hot)	70	100	130	175	190	200	225	240	250	270	290	300
UDT46 (Cold)	170	230	300	335	390	435	485	520	575	600	645	695

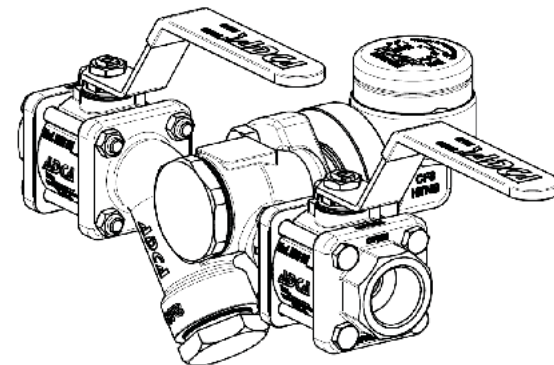
Minimum working pressure: 1,5 bar; Maximum working backpressure: 80%.



DIMENSIONS (mm)						
MODEL	A	B	C	D	E	WEIGHT (kg)
UDT46	78	35	67	50	49	1,1



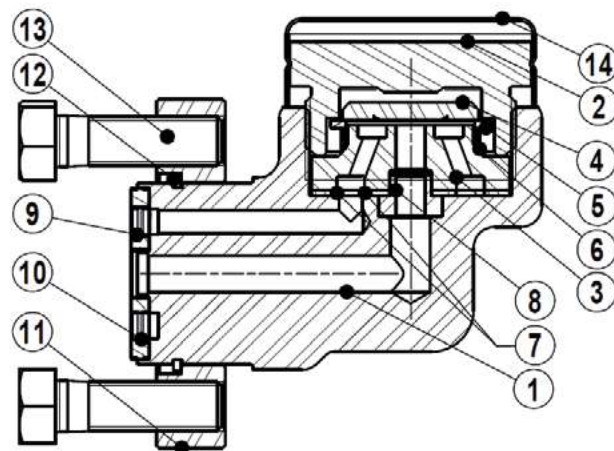
UDT46 steam trap connected to a UCX universal pipeline connector



UDT46 steam trap connected to a CTS4U compact station

MATERIALS		
POS. N°	DESCRIPTION	MATERIAL
1	Body	A351 CF8 / 1.4308
2	Cover	AISI 304 / 1.4301 AISI 303 / 1.4305
3	Valve seat	Hardened stainless steel
4	Valve disc	Hardened stainless steel
5	Washer support	AISI 304 / 1.4301
6	Bimetallic ring	Bimetal
7	* Gasket	Stainless steel / Graphite
8	* Tube	AISI 304 / 1.4301
9	* Inlet gasket	Stainless steel / Graphite
10	* Outlet gasket	Stainless steel / Graphite
11	Flange	AISI 316 / 1.4401
12	Retainer ring	Steel
13	Bolts	ASTM A193 Gr. B7
14	Insulation cover	AISI 304 / 1.4301

\* Available spare parts.



**UNIVERSAL PIPELINE CONNECTORS  
UCX90**

**DESCRIPTION**

The UCX series pipeline connectors are used in steam systems where a simple and economic maintenance program is desired. Typical installations are drip service on steam lines, tracing applications and small process equipment. The four-bolt flange connector allows for fast trap replacement without disturbing the pipelines. The UCX connector fits the universal four-bolt swivel connection steam traps.

**MAIN FEATURES**

Remains permanently in-line making the replacement of new traps easier and quicker. Steam traps can swivel 360°, allowing any pipe orientation during installation. The universal flange allows the trap to be positioned in the correct position, regardless of pipeline configuration. Built-in strainer.

OPTIONS: Blowdown valve.

USE: Saturated and superheated steam.

AVAILABLE MODELS: UCX90 – stainless steel.

SIZES: 1/2" to 1"; DN 15 to DN 25.

CONNECTIONS: Female threaded ISO 7 Rp or NPT.  
Flanged EN 1092-1 PN 100.  
Flanged ASME B16.5 Class 600.  
Socket weld (SW) ASME B16.11.

INSTALLATION: With the surface for swivel connection in a vertical plane (mechanical steam traps) or, alternatively, in an horizontal plane for thermostatic steam traps. See IMI – Installation and maintenance instructions.

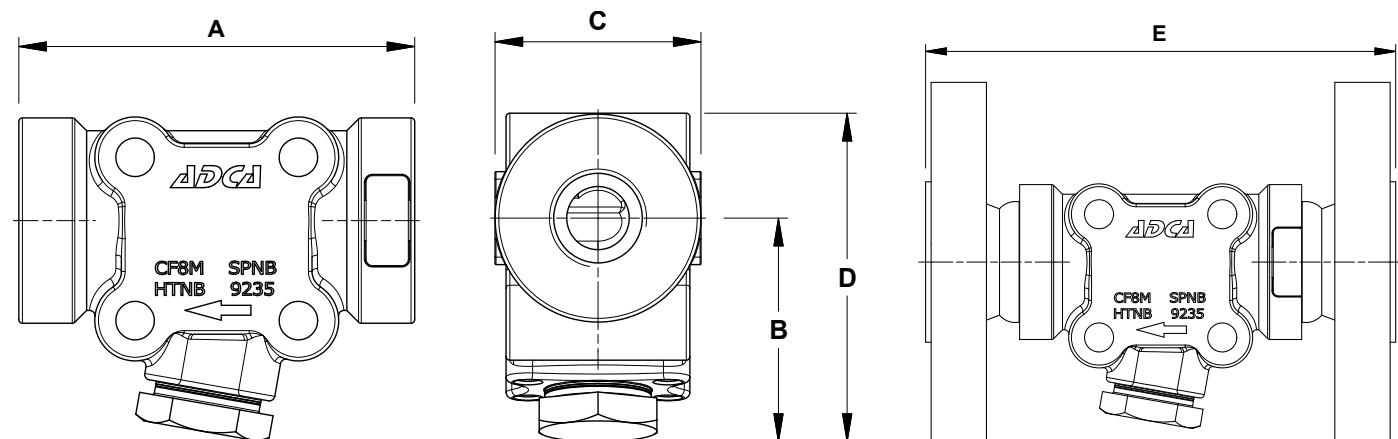


**BODY LIMITING CONDITIONS**

FLANGED PN 100 *	FLANGED CLASS 600 **	RELATED TEMP.
ALLOWABLE PRESSURE	ALLOWABLE PRESSURE	
100 bar	100 bar	50 °C
100 bar	92,7 bar	250 °C
97,6 bar	80,4 bar	350 °C
88 bar	67,7 bar	450 °C

Operating pressure: 4 to 85 bar.  
\* Acc. to EN 1092-1:2018. \*\* Acc. to EN 1759-1:2004.  
Body limiting conditions PN 100 or below, depending on the type of connection adopted. Rating PN 100 for threaded and SW versions.

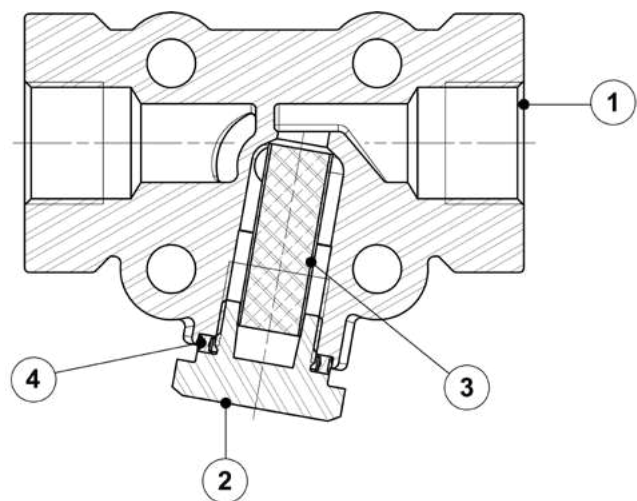




DIMENSIONS (mm)									
SIZE	THREADED / SW					PN 100		CLASS 600	
	A	B	C	D	WEIGHT (kg)	E	WEIGHT (kg)	E	WEIGHT (kg)
1/2" – DN 15	108	60	56	88	2,1	165	4,4	185	3,8
3/4" – DN 20	108	60	68	88	2,1	170	6	200	4,9
1" – DN 25	108	60	68	88	2	185	7,1	200	5,5

MATERIALS		
POS. N°	DESCRIPTION	MATERIAL
1	Body	A351 CF8M / 1.4408
2	Strainer cap	AISI 321 / 1.4541
3	* Strainer screen	AISI 304 / 1.4301
4	* Spiral wound gasket	Stainless steel / Graphite

\* Available spare parts.



## UNIVERSAL BIMETALLIC STEAM TRAPS UBS90 (For use with four-bolt universal pipeline connectors)

### DESCRIPTION

The UBS90 series bimetallic steam traps and air eliminators, completely in stainless steel, are maintenance free and sealed traps. Simple and robust, they are recommended for drip service, steam tracing applications and where condensate sensible heat can be recovered.

These traps fit the UCX90 four bolt universal connectors.

### MAIN FEATURES

- Sealed, non-maintainable.
- Modulating discharge.
- Discharges condensate below steam temperature.
- Excellent air discharge.
- Operates on superheated steam.
- Unaffected by water hammer and vibrations.

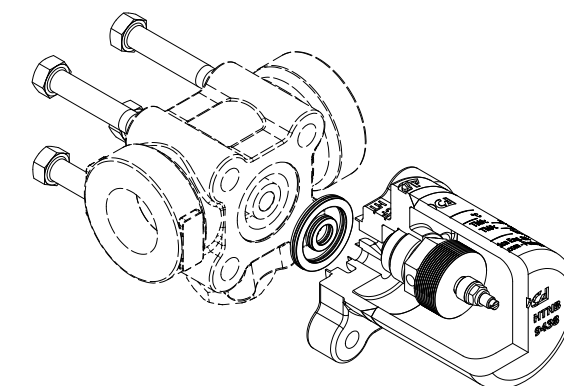
OPTIONS: Different operating limits.

USE: Saturated and superheated steam.

AVAILABLE MODELS: UBS90/4 and UBS90/6 – stainless steel.

SIZES: According to the selected pipeline connector.

INSTALLATION: With the bimetal column in a horizontal plane or pointing upwards.  
See IMI – Installation and maintenance instructions.

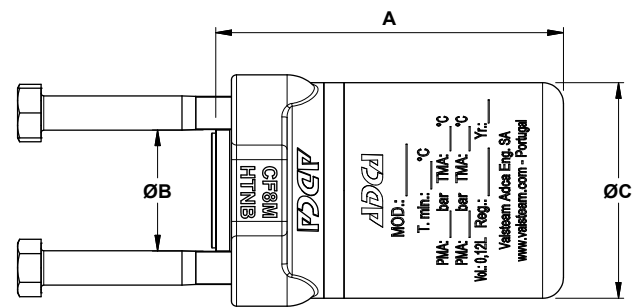


LIMITING CONDITIONS		
MODEL	MAX. OPERATING PRESSURE	RELATED TEMPERATURE
UBS90/4	45 bar	482 °C
UBS90/6	62 bar	482 °C

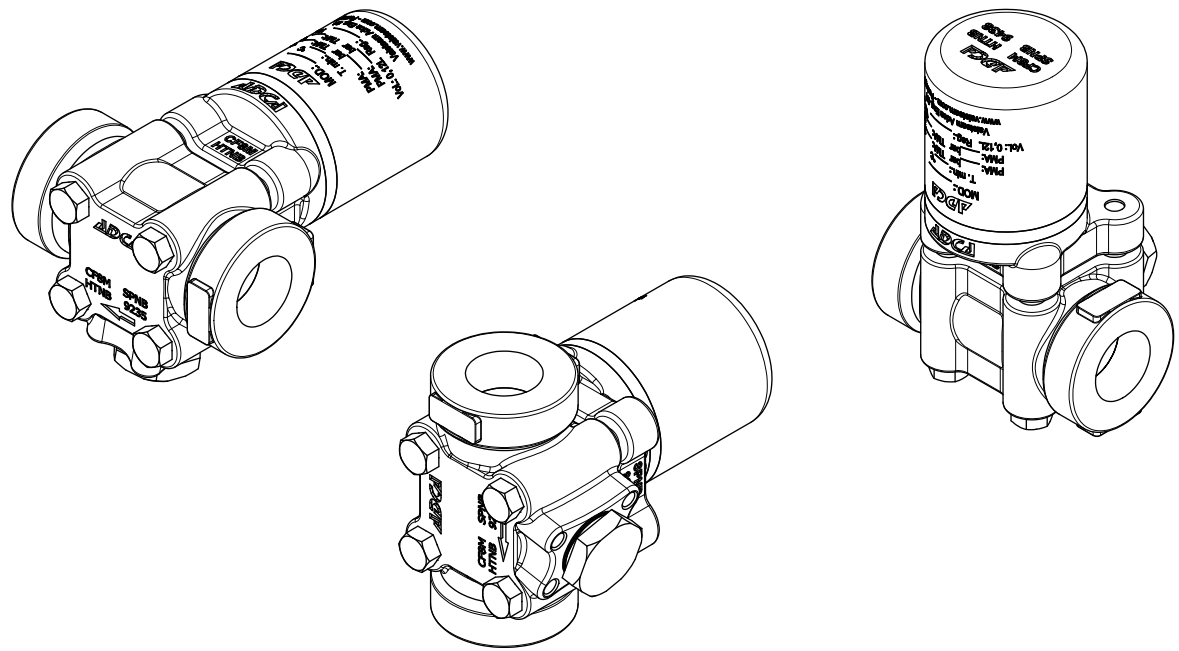
Operating pressure ranges:  
UBS90/4 – 15 to 45 bar.  
UBS90/6 – 25 to 62 bar.

FLOW RATE CAPACITY (kg/h)													
MODEL	SIZE	DIFFERENTIAL PRESSURE (bar)											
		15	17	20	22	25	30	35	40	45	50	55	62
UBS90/4	1/2" to 1" A	400	430	460	480	500	550	570	580	590	–	–	–
UBS90/4	1/2" to 1" B	2400	2600	2760	2800	3000	3200	3600	4000	4200	–	–	–
UBS90/6	1/2" to 1" A	400	430	460	480	500	550	570	580	590	600	610	620
UBS90/6	1/2" to 1" B	2400	2600	2760	2800	3000	3200	3600	4000	4200	4700	5000	5400

A: Condensate discharge at 10 °C below saturation temperature; B: Cold water capacity around 20 °C.

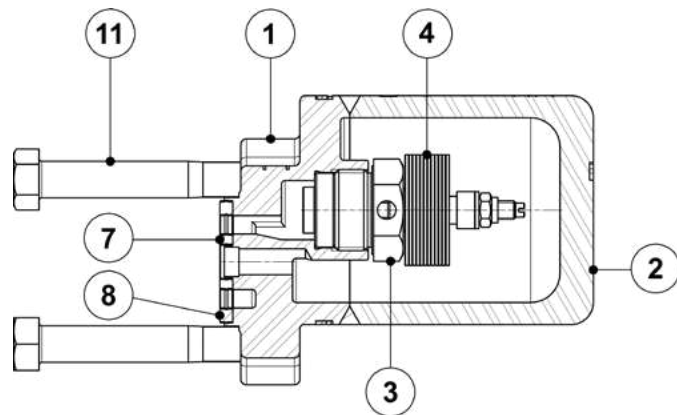


DIMENSIONS (mm)				
MODEL	A	B	C	WEIGHT (kg)
UBS90	100	35	62	1,7



UBS steam trap connected to a UCX universal pipeline connector

MATERIALS		
POS. Nº	DESCRIPTION	MATERIAL
1	Body	AISI 316L / 1.4404
2	Cover	AISI 316 / 1.4401
3	Valve seat	AISI 304 / 1.4301
4	Discs	Bimetal
6	Gasket	Copper
7	* Inlet gasket	Stainless steel / Graphite
8	* Outlet gasket	Stainless steel / Graphite
9	Flange	AISI 316 / 1.4401
10	Retainer ring	Steel
11	Bolts	A193 Gr. B7



\* Available spare parts.