



## THERMOSTATIC STEAM TRAPS AND AIR VENTS TH13A

### DESCRIPTION

The TH13A series thermostatic steam traps and air vents are specifically designed for use on process equipment such as kettle cookers, sterilizers, food, chemical and laundry equipment. Their small size makes them ideal for use with a wide variety of this equipment and, specially, as air vents.

### MAIN FEATURES

- Modulating discharge.
- Discharges condensate close to steam temperature.
- Thermostats for different sub cooling (5 °C to 30 °C).
- Excellent air discharge.
- Simple and compact design.
- Built-in strainer.

USE: Saturated steam.

AVAILABLE MODELS: TH13A – brass.

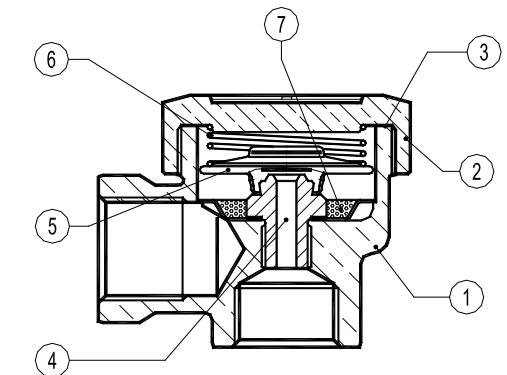
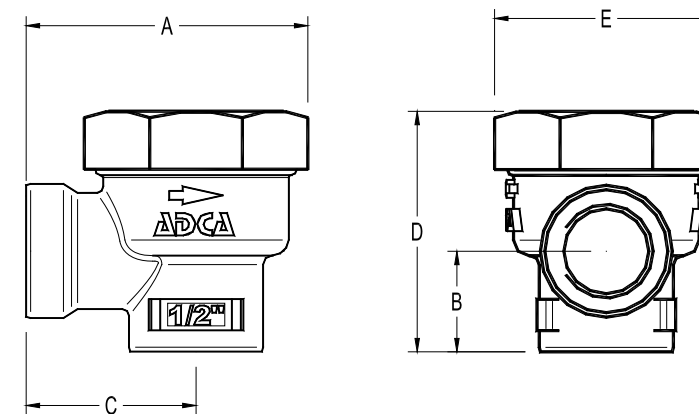
SIZES: 1/2".

CONNECTIONS: Female threaded ISO 7 Rp.

INSTALLATION: Vertical installation, angled connections.  
See IMI – Installation and maintenance instructions.



LIMITING CONDITIONS	
PMA – Maximum allowable pressure	16 bar
TMA – Maximum allowable temperature	260 °C
PMO – Maximum operating pressure	13 bar
TMO – Maximum operating temperature	200 °C



DIMENSIONS (mm)						
SIZE	A	B	C	D	E	WEIGHT (kg)
1/2"	63	22,5	38	54	50	0,5

MATERIALS		
POS. N°	DESIGNATION	MATERIAL
1	Body	Brass EN 12165 / CuZn39Pb2
2	Cover	Brass EN 12165 / CuZn39Pb2
3	* Gasket	Stainless steel / Graphite
4	* Valve seat	AISI 304 / 1.4301
5	* Thermostat	Stainless steel
6	* Spring	AISI 302 / 1.4300
7	* Strainer screen	AISI 304 / 1.4301

\* Available spare parts.

FLOW RATE CAPACITY (kg/h)													
MODEL	SIZE	DIFFERENTIAL PRESSURE (bar)											
		0,2	0,3	0,5	1	1,5	2	3	4	6	8	10	13
TH13A	1/2"	45	55	70	95	125	135	180	200	270	315	330	360

Capacities shown refer to condensate at 10 °C below saturated steam temperature (standard type S thermostat).  
Thermostats for 5 °C (type H) and 30 °C (type L) also available. Capacities for cold condensate discharge at 20 °C are two to three times greater.

**VALSTEAM ADCA**

We reserve the right to change the design and material of this product without notice.

Produced in accordance with Sound Engineering Practices of the European PED - Pressure Equipment Directive.

IS 1.513 E 04.07

**THERMOSTATIC STEAM TRAPS AND AIR VENTS  
TH21**

**DESCRIPTION**

The TH21 series thermostatic steam traps and air vents are specifically designed for use on process equipment such as kettle cookers, sterilizers, food, chemical and laundry equipment.

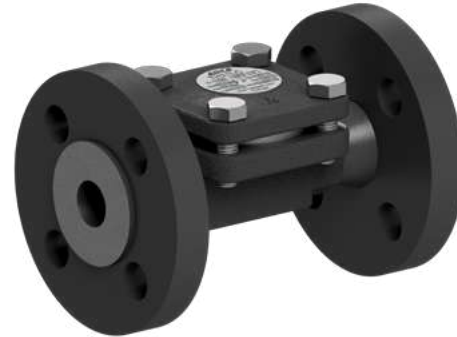
**MAIN FEATURES**

- Modulating discharge.
- Discharges condensate close to steam temperature.
- Thermostats for different sub cooling (5 °C to 30 °C).
- Excellent air discharge.
- Operates on moderate superheated steam.
- Built-in strainer.

**USE:** Saturated steam.  
**AVAILABLE MODELS:** TH21 – carbon steel.  
TH21LC – carbon steel, low capacity.

**SIZES:** 1/2"; DN 15.

**CONNECTIONS:** Female threaded ISO 7 Rp or NPT.  
Flanged EN 1092-1 PN 25.  
Flanged ASME B16.5 Class 150.  
Socket weld (SW) ASME 16.11.  
Butt weld (BW) ASME B16.25 on request.

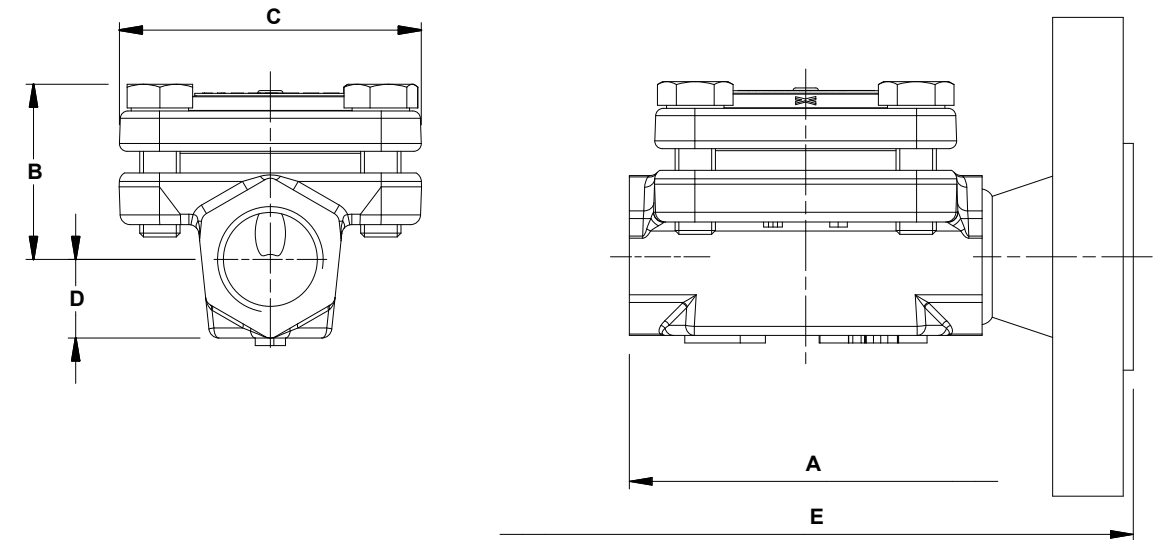


BODY LIMITING CONDITIONS		
FLANGED PN 25 *	FLANGED CLASS 150 **	RELATED TEMPERATURE
ALLOWABLE PRESSURE	ALLOWABLE PRESSURE	
23,2 bar	15,4 bar	100 °C
20,8 bar	13,8 bar	200 °C
19 bar	12,1 bar	250 °C

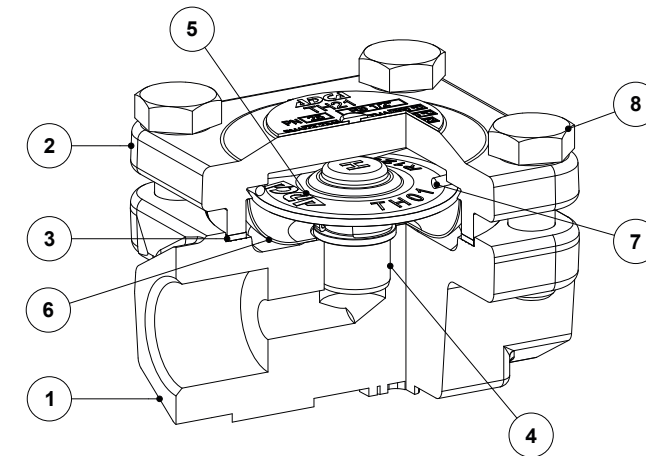
PMO – Max. operating pressure: 21 bar.  
TMO – Max. operating temperature: 250 °C.  
\* Acc. to EN 1092-1:2018; \*\* Acc. to EN 1759-1:2004.  
Body limiting conditions PN 25 or below, depending on the type of connection adopted. Rating PN 25 for threaded version.

FLOW RATE CAPACITY (kg/h)																
MODEL	SIZE	DIFFERENTIAL PRESSURE (bar)														
		0,2	0,3	0,5	1	1,5	2	3	4	6	8	10	13	15	20	21
TH21	1/2" – DN 15	70	120	140	255	330	385	455	510	600	670	700	720	750	775	795
TH21LC	1/2" – DN 15	45	55	70	95	125	135	180	200	270	315	330	360	370	405	415

Capacities shown refer to condensate at 10 °C below saturated steam temperature (standard type S thermostat).  
Thermostats for 5 °C (type H) and 30 °C (type L) also available. Capacities for cold condensate discharge at 20 °C are two to three times greater.



DIMENSIONS (mm)									
SIZE	THREADED					PN 25		CLASS 150	
	A	B	C	D	WEIGHT (kg)	E	WEIGHT (kg)	E	WEIGHT (kg)
1/2"	70	35	60	15	0,7	130	2,2	150	1,7



MATERIALS		
POS. N°	DESIGNATION	MATERIAL
1	Body	P250GH / 1.0460
2	Cover	P250GH / 1.0460
3	* Gasket	Stainless steel / Graphite
4	Valve seat	AISI 304 / 1.4301
5	* Thermostatic element	Stainless steel
6	* Strainer screen	AISI 304 / 1.4301
7	* Spring	AISI 302 / 1.4300
8	Bolts	Steel 8.8

\* Available spare parts.

**THERMOSTATIC STEAM TRAPS AND AIR VENTS  
TH32Y**

**DESCRIPTION**

The TH32Y series thermostatic steam traps and air vents are specifically designed for use on process equipment such as kettle cookers, sterilizers, food, chemical and laundry equipment.

**MAIN FEATURES**

- Modulating discharge.
- Discharges condensate close to steam temperature.
- Thermostats for different sub cooling (5 °C to 30 °C).
- Excellent air discharge.
- Operates on moderate superheated steam.
- Built-in strainer.

**OPTIONS:** Blowdown valve.  
Integrated check valve.

**USE:** Saturated steam.

**AVAILABLE MODELS:** TH32Y – carbon steel.  
TH32YLC – low capacity, carbon steel.  
Suffix "CK": Version with integrated check valve.

**SIZES:** 1/2" to 1"; DN 15 to DN 25.

**CONNECTIONS:** Female threaded ISO 7 Rp or NPT.  
Flanged EN 1092-1 PN 40.  
Flanged ASME B16.5 Class 150 or 300.  
Socket weld (SW) ASME 16.11.  
Butt weld (BW) ASME B16.25 on request.

**INSTALLATION:** Horizontal installation recommended, can be installed in any position.  
See IMI – Installation and maintenance instructions.



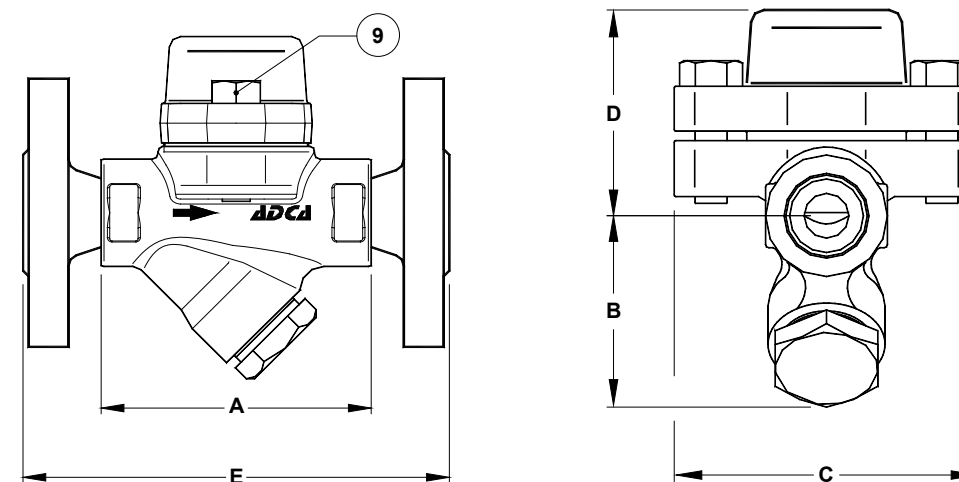
BODY LIMITING CONDITIONS		
FLANGED PN 40 / CLASS 300 *	FLANGED CLASS 150 **	RELATED TEMPERATURE
ALLOWABLE PRESSURE	ALLOWABLE PRESSURE	
40 bar	19,3 bar	50 °C
35 bar	15,8 bar	150 °C
30,4 bar	12,1 bar	250 °C
27,6 bar	10,2 bar	300 °C

PMO – Max. operating pressure: 22 bar.  
TMO – Max. operating temperature: 250 °C.  
\* Acc. to EN 1092-1:2018. \*\* Acc. to EN 1759-1:2004.  
Body limiting conditions PN 40 or below, depending on the type of connection adopted. Rating PN 40 for threaded, SW and BW versions.

CE MARKING – GROUP 2 (PED – European Directive)	
PN 40	Category
1/2" to 1" – DN 15 to 25	SEP

FLOW RATE CAPACITY (kg/h)																
MODEL	SIZE	DIFFERENTIAL PRESSURE (bar)														
		0,2	0,3	0,5	1	1,5	2	3	4	6	8	10	13	15	20	22
TH32Y	1/2" to 1" DN 15 to 25	70	120	140	255	330	385	455	510	600	670	700	720	750	775	795
TH32YLC	1/2" to 1" DN 15 to 25	45	55	70	95	125	135	180	200	270	315	330	360	370	405	415

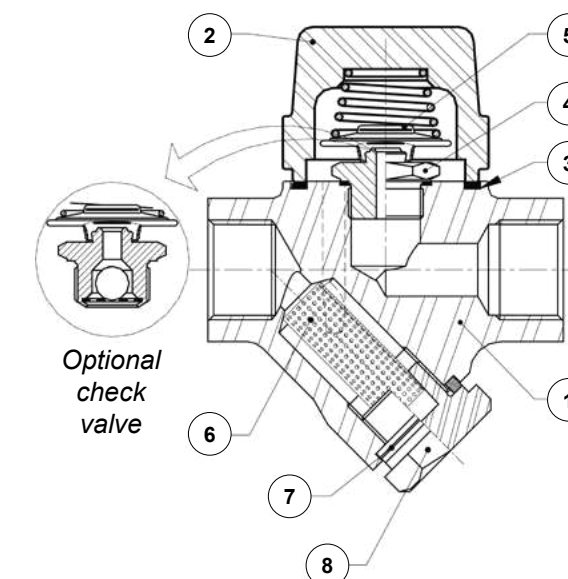
Capacities shown refer to condensate at 10 °C below saturated steam temperature (standard type S thermostat).  
Thermostats for 5 °C (type H) and 30 °C (type L) also available. Capacities for cold condensate discharge at 20 °C are two to three times greater.



DIMENSIONS (mm)											
SIZE	THREADED / SW					PN 40		CLASS 150		CLASS 300	
	A	B	C	D	WEIGHT (kg)	E	WEIGHT (kg)	E	WEIGHT (kg)	E	WEIGHT (kg)
1/2" – DN 15	95	59	95	65	1,6	150	3,2	150	2,7	150	3,5
3/4" – DN 20	95	59	95	65	1,6	150	3,9	150	3,1	150	4,7
1" – DN 25	95	65	95	65	1,8	160	4,7	160	4,3	160	5,9

MATERIALS		
POS. N°	DESIGNATION	MATERIAL
1	Body	P250GH / 1.0460
2	Cover	P250GH / 1.0460
3	* Gasket	Stainless steel / Graphite
4	* Valve seat	AISI 304 / 1.4301
5	* Thermostatic element	Stainless steel
6	* Strainer screen	AISI 304 / 1.4301
7	* Gasket	Stainless steel / Graphite
8	* Strainer cover	A 105 / 1.0432
9	Bolts	Stainless steel A2-70

\* Available spare parts.



**THERMOSTATIC STEAM TRAPS AND AIR VENTS  
TH32i**

**DESCRIPTION**

The TH32i series thermostatic steam traps and air vents are specifically designed for use on process equipment such as kettle cookers, sterilizers, food, chemical and laundry equipment.

**MAIN FEATURES**

- Modulating discharge.
- Discharges condensate close to steam temperature.
- Thermostats for different sub cooling (5 °C to 30 °C).
- Excellent air discharge.
- Operates on moderate superheated steam.
- Built-in strainer.

**OPTIONS:** LC – low capacity.  
Integral check valve.  
Blowdown valve.

**USE:** Saturated steam.

**AVAILABLE MODELS:** TH32i – stainless steel.  
TH32i-CK – stainless steel, with check valve.

**SIZES:** 1/2" to 1"; DN 15 to DN 25.

**CONNECTIONS:** Female threaded ISO 7 Rp or NPT.  
Flanged EN 1092-1 PN 40.  
Flanged ASME B16.5 Class 150 or 300.  
Socket weld (SW) ASME 16.11.  
Butt weld (BW) ASME B16.25 on request.

**INSTALLATION:** Horizontal installation recommended, can be installed in any position.  
See IMI – Installation and maintenance instructions.



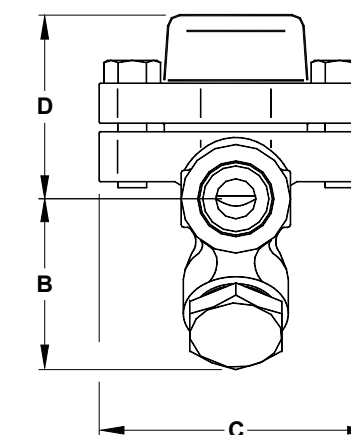
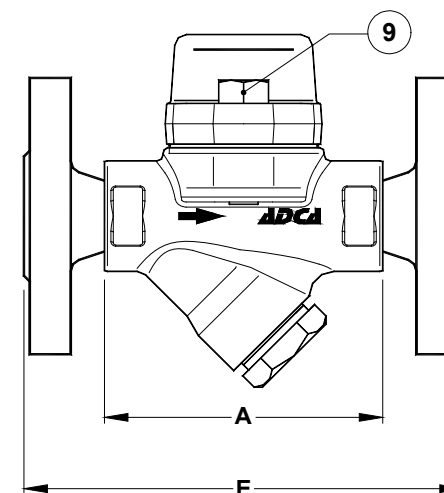
BODY LIMITING CONDITIONS			
FLANGED PN 40 *	FLANGED CLASS 150 **	FLANGED CLASS 300 **	RELAT. TEMP.
ALLOW. PRESSURE	ALLOW. PRESSURE	ALLOW. PRESSURE	
40 bar	15,3 bar	39,9 bar	50 °C
34,4 bar	12 bar	31,3 bar	150 °C
29,9 bar	10,2 bar	26,6 bar	250 °C
27,6 bar	9,7 bar	25,2 bar	300 °C

PMO – Max. operating pressure: 22 bar.  
TMO – Max. operating temperature: 250 °C.  
\* Acc. to EN 1092-1:2018. \*\* Acc. to EN 1759-1:2004.  
Body limiting conditions PN 40 or below, depending on the type of connection adopted. Rating PN 40 for threaded, SW and BW versions.

CE MARKING – GROUP 2 (PED – European Directive)	
PN 40	Category
1/2" to 1" – DN 15 to 25	SEP

FLOW RATE CAPACITY (kg/h)																
MODEL	SIZE	DIFFERENTIAL PRESSURE (bar)														
		0,2	0,3	0,5	1	1,5	2	3	4	6	8	10	13	15	20	22
TH32i	1/2" to 1" DN 15 to 25	70	120	140	255	330	385	455	510	600	670	700	720	750	775	795
TH32iLC	1/2" to 1" DN 15 to 25	45	55	70	95	125	135	180	200	270	315	330	360	370	405	415

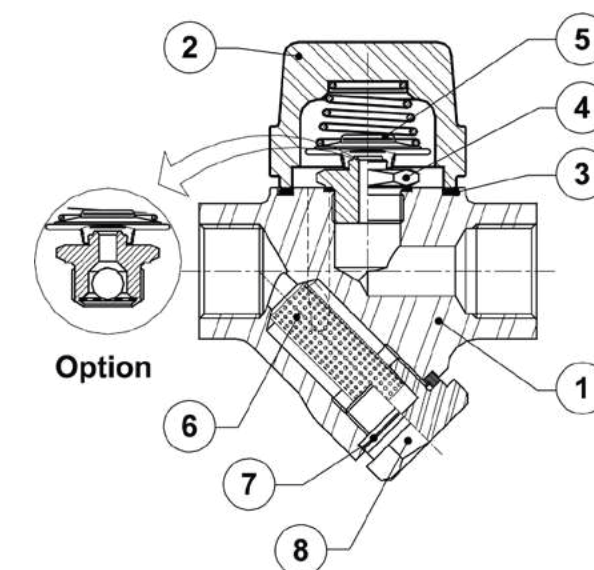
Capacities shown refer to condensate at 10 °C below saturated steam temperature (standard type S thermostat).  
Thermostats for 5 °C (type H) and 30 °C (type L) also available. Capacities for cold condensate discharge at 20 °C are two to three times greater.



DIMENSIONS (mm)											
SIZE	THREADED / SW				WEIGHT (kg)	PN 40		CLASS 150		CLASS 300	
	A	B	C	D		E	WEIGHT (kg)	E	WEIGHT (kg)	E	WEIGHT (kg)
1/2" – DN 15	95	59	95	65	1,6	150	3,2	150	2,7	150	3,5
3/4" – DN 20	95	59	95	65	1,6	150	3,9	150	3,1	150	4,7
1" – DN 25	95	65	95	65	1,8	160	4,7	160	4,3	160	5,9

MATERIALS		
POS. N°	DESIGNATION	MATERIAL
1	Body	AISI 316L / 1.4404
2	Cover	AISI 316L / 1.4404
3	* Gasket	Stainless steel / Graphite
4	* Valve seat	AISI 304 / 1.4301
5	* Thermostatic element	Stainless steel
6	* Strainer screen	AISI 304 / 1.4301
7	* Gasket	Stainless steel / Graphite
8	* Strainer cover	AISI 303 / 1.4305
9	Bolts	Stainless steel A2-70

\* Available spare parts.





## THERMOSTATIC STEAM TRAPS AND AIR VENTS TSS22

### DESCRIPTION

The TSS22 series of balanced pressure thermostatic steam traps and air vents are specifically designed for use on process equipment such as sterilizers and other autoclaves, kettle cookers, food, chemical and laundry equipment. Their small size makes them ideal specially when a fully stainless steel steam trap is required.

### MAIN FEATURES

Modulating discharge.  
Discharges condensate close to steam temperature.  
Thermostats for different sub cooling (5 °C to 30 °C).  
Excellent air discharge.  
Operates on moderate superheated steam.  
Simple and compact design.

OPTIONS: Welded body.

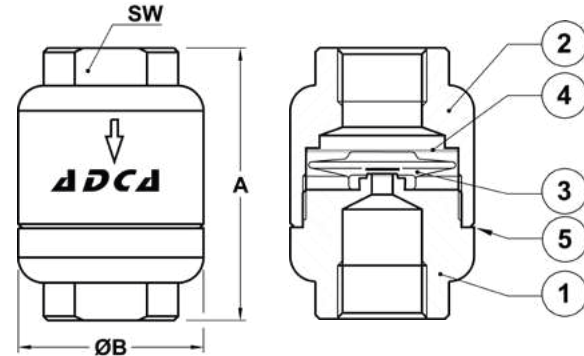
USE: Saturated steam.

AVAILABLE MODELS: TSS22, TSS22H – stainless steel.

SIZES: 1/4" to 1".

CONNECTIONS: Female threaded ISO 7 Rp or NPT.

INSTALLATION: Horizontal or vertical installation.  
See IMI – Installation and maintenance instructions.



BODY LIMITING CONDITIONS	
THREADED PN 40	RELATED TEMPERATURE
ALLOWABLE PRESSURE	
34,4 bar	100 °C
30,8 bar	150 °C
28 bar	200 °C
26 bar	250 °C

PMO – Max. operating pressure: 22 bar;  
TMO – Max. operating temperature: 250 °C.

DIMENSIONS (mm)				
SIZE	A	B	SW	WGT. (kg)
1/4"	65	44	27	0,5
3/8"	65	44	27	0,5
1/2"	65	44	27	0,45
3/4"	65	44	36	0,47
1"	65	44	40	0,4

MATERIALS		
POS. N°	DESIGNATION	MATERIAL
1	Body	AISI 304 / 1.4301
2	Cover	AISI 304 / 1.4301
3	* Thermostatic element	Stainless steel
4	* Strainer screen	AISI 304 / 1.4301
5	* Gasket	St. steel / Graphite

\* Available spare parts.

FLOW RATE CAPACITY (kg/h)																
MODEL	SIZE	DIFFERENTIAL PRESSURE (bar)														
		0,2	0,3	0,5	1	1,5	2	3	4	6	8	10	13	15	20	22
TSS22	1/4" to 1"	45	55	70	95	125	135	180	200	270	315	330	360	370	405	415
TSS22H	1/2" to 1"	70	120	140	255	330	385	455	510	600	670	700	720	750	775	795

Capacities shown refer to condensate at 10 °C below saturated steam temperature (standard type S thermostat).  
Thermostats for 5 °C (type H) and 30 °C (type L) also available. Capacities for cold condensate discharge at 20 °C are two to three times greater.



We reserve the right to change the design and material of this product without notice.



## THERMOSTATIC STEAM TRAPS AND AIR VENTS TSW22

### DESCRIPTION

The TSW22 all stainless steel thermostatic steam traps and air vents are specifically designed for use on process equipment such as kettle cookers, sterilizers, food, chemical and laundry equipment. Their small size makes them ideal for use with a wide variety of this equipment.

### MAIN FEATURES

Modulating discharge.  
Discharges condensate close to steam temperature.  
Thermostats for different sub cooling (5 °C to 30 °C).  
Excellent air discharge.  
Operates on moderate superheated steam.  
Simple and compact design.  
Can operate in any plane.

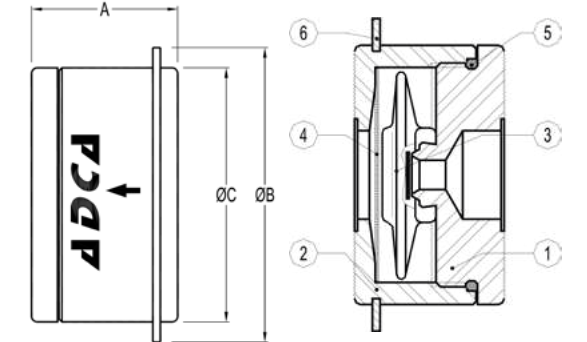
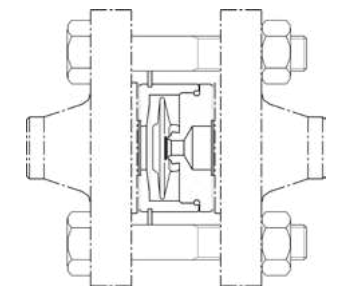
USE: Saturated steam.

AVAILABLE MODELS: TSW22 – stainless steel wafer design.

SIZES: DN 15 to DN 25.

CONNECTIONS: Sandwiched between flanges as per EN 1092-1 PN 40.

INSTALLATION: In any position.  
See IMI – Installation and maintenance instructions.



BODY LIMITING CONDITIONS	
WAFFER PN 40	RELATED TEMPERATURE
ALLOWABLE PRESSURE	
34,4 bar	100 °C
30,8 bar	150 °C
28 bar	200 °C
26 bar	250 °C

PMO – Max. operating pressure: 22 bar.  
TMO – Max. operating temperature: 250 °C.

DIMENSIONS (mm)				
SIZE	A	B	C	WGT. (kg)
DN 15	25	51	43	0,25
DN 20	31,5	61	53	0,45
DN 25	35,5	71	64	0,75

\* DN 20 is suitable for installation between flanges DN 15, removing the centering ring.

MATERIALS		
POS. N°	DESIGNATION	MATERIAL
1	Body	AISI 304 / 1.4301
2	Cover	AISI 304 / 1.4301
3	* Thermostatic element	Stainless steel
4	* Strainer screen	AISI 304 / 1.4301
5	* Gasket	St. steel / Graphite
6	Centering ring	AISI 304 / 1.4301

\* Available spare parts.

FLOW RATE CAPACITY (kg/h)																
MODEL	SIZE	DIFFERENTIAL PRESSURE (bar)														
		0,2	0,3	0,5	1	1,5	2	3	4	6	8	10	13	15	20	22
TSW22	DN 15 to 25	70	120	140	255	330	385	455	510	600	670	700	720	750	775	795

Capacities shown refer to condensate at 10 °C below saturated steam temperature (standard type S thermostat).  
Thermostats for 5 °C (type H) and 30 °C (type L) also available. Capacities for cold condensate discharge at 20 °C are two to three times greater.



We reserve the right to change the design and material of this product without notice.

## THERMOSTATIC STEAM TRAPS AND AIR VENTS TH35/2 and TH35/3

### DESCRIPTION

The TH35 series thermostatic steam traps and air vents are specifically designed for use on process equipment such as kettle cookers, sterilizers, food, chemical and laundry equipment.

### MAIN FEATURES

- Modulating discharge.
- Discharges condensate close to steam temperature.
- Excellent air discharge.
- Operates on moderate superheated steam.
- Can operate in any plane.



OPTIONS: Stainless steel construction.

USE: Saturated steam.

AVAILABLE MODELS: TH35/2 – carbon steel, 2 capsules.  
TH35/3 – carbon steel, 3 capsules.

SIZES: 1" – DN 25.

CONNECTIONS: Female threaded ISO 7 Rp or NPT.  
Flanged EN 1092-1 PN 40.  
Flanged ASME B16.5 Class 150 or 300.  
Socket weld (SW) ASME 16.11.  
Butt weld (BW) ASME B16.25 on request.

INSTALLATION: Horizontal installation recommended, can be installed in any position.  
See IMI – Installation and maintenance instructions.

BODY LIMITING CONDITIONS		
FLANGED PN 40 / CLASS 300 *	FLANGED CLASS 150 **	RELATED TEMP.
ALLOW. PRESSURE	ALLOW. PRESSURE	
40 bar	19,3 bar	50 °C
35 bar	15,8 bar	150 °C
30,4 bar	12,1 bar	250 °C
27,6 bar	10,2 bar	300 °C

PMO – Maximum operating pressure: 22 bar;  
TMO – Maximum operating temperature: 250 °C;  
\* Acc. to EN 1092-1:2018; \*\* Acc. to EN 1759-1:2004.  
Body limiting conditions PN 40 or below, depending on the type of connection adopted. Rating PN 40 for threaded, SW and BW versions.

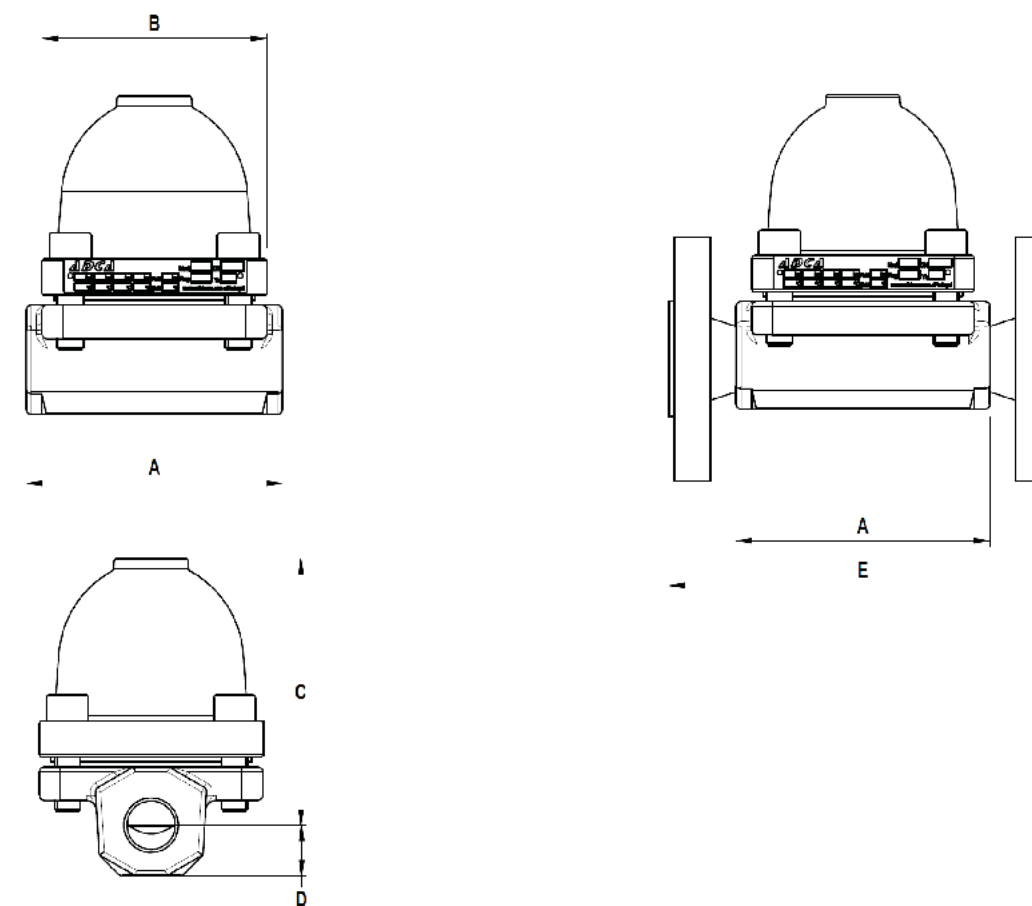
### CE MARKING – GROUP 2 (PED – European Directive)

PN 40	Category
1" – DN 25	SEP

### FLOW RATE CAPACITY (kg/h)

MODEL	SIZE	DIFFERENTIAL PRESSURE (bar)															
		0,2	0,3	0,5	1	1,5	2	3	4	6	8	10	13	15	20	22	
TH35/2	1" – DN 25	140	240	280	510	660	770	910	1020	1200	1340	1400	1440	1500	1550	1590	
TH35/3	1" – DN 25	210	360	420	765	990	1155	1365	1530	1800	2010	2100	2160	2250	2325	2385	

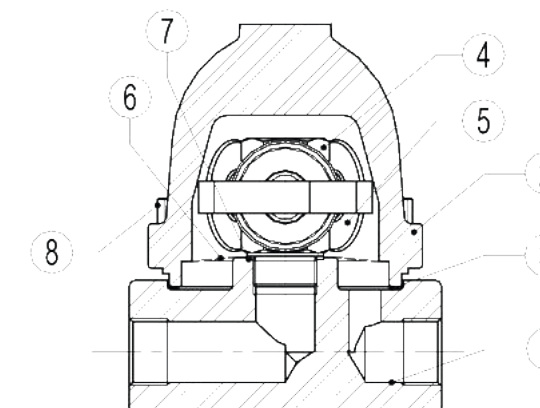
Capacities shown refer to condensate at 5 °C below saturated steam temperature.  
Capacities for cold condensate discharge at 20 °C are two to three times greater.



DIMENSIONS (mm)											
THREADED / SW						PN 40		CLASS 150		CLASS 300	
SIZE	A	B	C	D	WEIGHT (kg)	E	WEIGHT (kg)	E	WEIGHT (kg)	E	WEIGHT (kg)
1" – DN 25	98	86	103	20	2,8	160	5,4	160	5	160	6,6

MATERIALS		
POS. N°	DESIGNATION	MATERIAL
1	Body	P250GH / 1.0460
2	Cover	P250GH / 1.0460
3	* Gasket	Stainless steel / Graphite
4	* Valve seat	AISI 304 / 1.4301
5	* Thermostats	Stainless steel
6	* Strainer screen	AISI 304 / 1.4301
7	* Gasket	Copper
8	Bolts	Steel 8.8

\* Available spare parts.





## THERMOSTATIC STEAM TRAPS AND AIR VENTS TH36/4 – TH36/6

### DESCRIPTION

The TH36 series thermostatic steam traps and air vents are specifically designed for use on process equipment such as kettle cookers, sterilizers, food, chemical and laundry equipment where high discharge capacities are required.

### MAIN FEATURES

Modulating discharge.  
Discharges condensate close to steam temperature.  
Excellent air discharge.  
Operates on moderate superheated steam.

OPTIONS: Stainless steel construction.

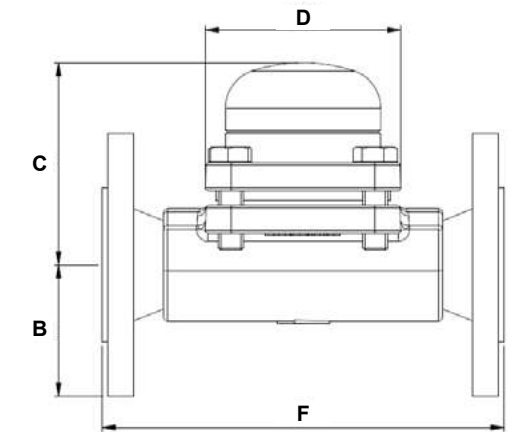
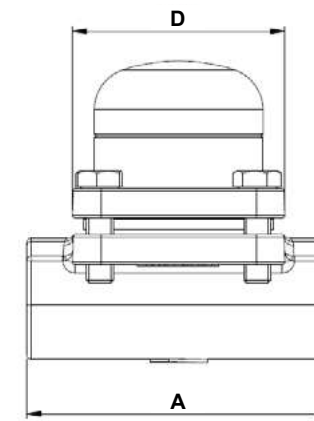
USE: Saturated steam.

AVAILABLE MODELS: TH36/4 – carbon steel, 4 capsules.  
TH36/6 – carbon steel, 6 capsules.

SIZES: 1 1/2" and 2"; DN 40 and DN 50.

CONNECTIONS: Female threaded ISO 7 Rp or NPT.  
Flanged EN 1092-1 PN 40.  
Flanged ASME B16.5 Class 150 or 300.  
Socket weld (SW) ASME 16.11.  
Butt weld (BW) ASME B16.25.

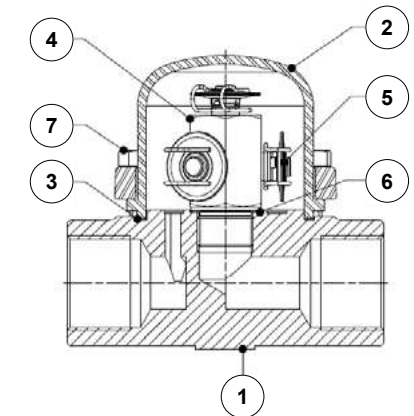
INSTALLATION: Horizontal installation recommended, can be installed in any position.  
See IMI – Installation and maintenance instructions.



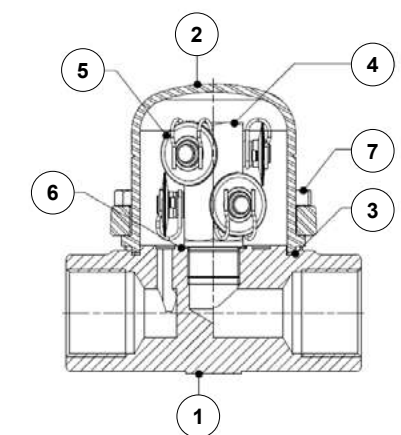
SIZE	DIMENSIONS (mm)												
	THREADED / SW / BW				PN 40		CLASS 150			CLASS 300			
	A	C	D	WEIGHT (kg)	B	F*	WEIGHT (kg)	B	F*	WEIGHT (kg)	B	F*	WEIGHT (kg)
1 1/2" – DN 40	160	126	112	4,6	75	230	9,3	64	230	8,2	78	230	11,2
2" – DN 50	230	126	112	5,8	83	230	10,2	76	230	10	83	230	11,6

MATERIALS		
POS. N°	DESIGNATION	MATERIAL
1	Body	A105 / 1.0432 (Equiv. P250GH)
2	Cover	P265GH / 1.0425 S355JR / 1.0045
3	* Gasket	Stainless steel / Graphite
4	* Valve seat	AISI 304 / 1.4301
5	* Thermostats	Stainless steel
6	* Seat gasket	Copper
7	Bolts	Steel 8.8

\* Available spare parts.



TH36/4



TH36/6

BODY LIMITING CONDITIONS		
FLANGED PN 40 / CLASS 300 *	FLANGED CLASS 150 **	RELATED TEMPERATURE
ALLOW. PRESSURE	ALLOW. PRESSURE	
40 bar	19,3 bar	50 °C
35 bar	15,8 bar	150 °C
30,4 bar	12,1 bar	250 °C
27,6 bar	10,2 bar	300 °C

PMO – Maximum operating pressure: 22 bar.  
TMO – Maximum operating temperature: 250 °C;  
\* Acc. to EN 1092-1:2018; \*\* Acc. to EN 1759-1:2004.  
Body limiting conditions PN 40 or below, depending on the type of connection adopted. Rating PN 40 for threaded, SW and BW versions.

CE MARKING – GROUP 2 (PED – European Directive)		
CLASS 150	PN 40	Category
1 1/2" and 2"	–	SEP
–	1 1/2" and 2" – DN 40 and 50	1 (CE marked)

FLOW RATE CAPACITY (kg/h)																
MODEL	SIZE	DIFFERENTIAL PRESSURE (bar)														
		0,2	0,3	0,5	1	1,5	2	3	4	6	8	10	13	15	20	22
TH36/4	1 1/2" and 2" DN 40 and 50	280	480	560	1020	1320	1540	1820	2040	2400	2680	2800	2880	3000	3100	3180
TH36/6	1 1/2" and 2" DN 40 and 50	420	720	840	1530	1980	2310	2730	3060	3600	4020	4200	4320	4500	4650	4770

Capacities shown refer to condensate at 5 °C below saturated steam temperature.  
Capacities for cold condensate discharge at 20 °C are two to three times greater.